

V&V Reference Report

L2 ASCDS Version : 8.4.5

Observation 56810 - L2 Version 2
Chandra X-Ray Center

L2 Processing Date : Jun 14 2012

Contents

1	Front	2
2	OBI	3
2.1	OBI	3
2.1.1	Images	3
2.1.2	Bias	3
2.1.3	Parameters	4
2.1.4	Events	4
2.2	Compared Parameters	5
2.3	Star Slots	6
2.4	FID Slots	6
A	Summary	7
A.1	Status	7
A.2	Comments	7

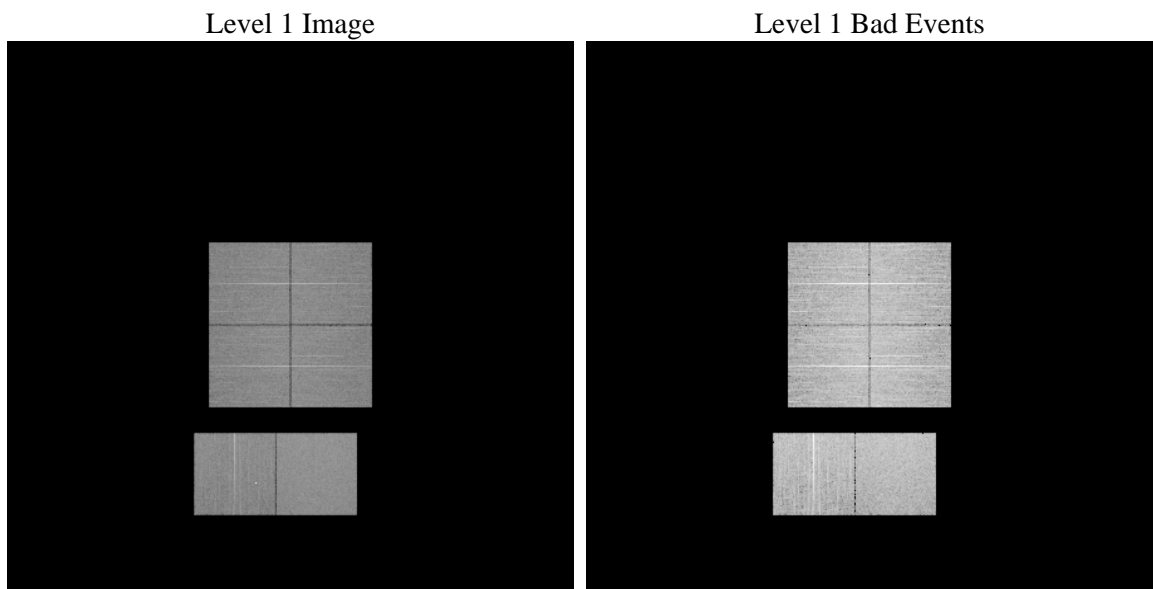
1 Front

seq_num	 	Sequence number
obs_id	56810	Observation id
title	ACIS-012367 diagnostics	Proposal title
observer	CHANDRA engineering request/realtime commanding	Principal investig
object	 	Source name
dtcycle	0	
cycle	P	events from which exps? Prim/Second/Both
ra_targ	0.0	Observer's specified target RA [deg]
dec_targ	0.0	Observer's specified target Dec [deg]
ra_nom	351.98559830597	Nominal RA [deg]
dec_nom	23.972007810539	Nominal Dec [deg]
roll_nom	201.78247540396	Nominal Roll [deg]
revision	2	Processing version of data
ontime	8451.1999685764	Sum of GTIs [s]
livetime	8344.1857858726	Livetime [s]
ontime0	8447.9589483738	Sum of GTIs [s]
ontime1	8451.1666073203	Sum of GTIs [s]
ontime2	8451.125567317	Sum of GTIs [s]
ontime3	8451.1999685764	Sum of GTIs [s]
ontime6	8451.0845273137	Sum of GTIs [s]
ontime7	8451.1999685764	Sum of GTIs [s]
l2events	463473	Number of level 2 events

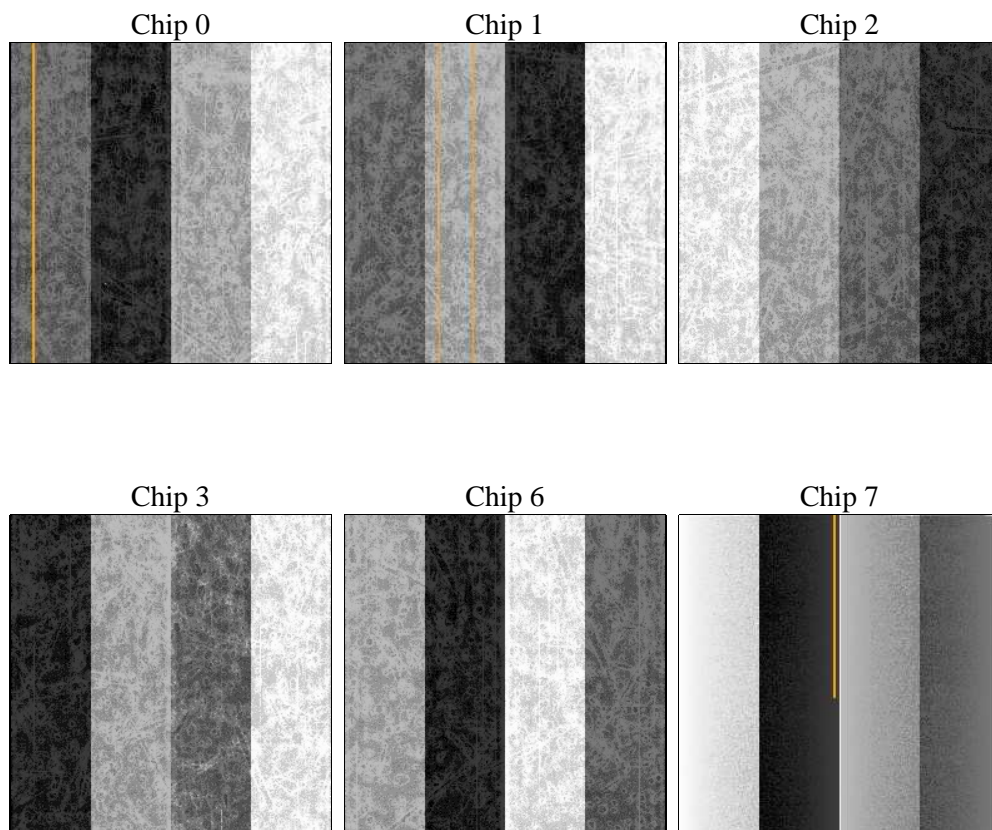
2 OBI

2.1 OBI

2.1.1 Images



2.1.2 Bias



2.1.3 Parameters

obi_num	0	Obi number	sched_exp_time	0.0	[s] Scheduled observation exposure time
ascdsver	8.4.5	Processing system revision	ontime	8451.1999685764	Sum of GTIs [s]
caldsver	4.4.10	 	ontime0	8447.9589483738	Sum of GTIs [s]
date	2012-06-13T23:33:44	Date and time of file creation	ontime1	8451.1666073203	Sum of GTIs [s]
revision	2	Processing version of data	ontime2	8451.125567317	Sum of GTIs [s]
			ontime3	8451.1999685764	Sum of GTIs [s]
			ontime6	8451.0845273137	Sum of GTIs [s]
			ontime7	8451.1999685764	Sum of GTIs [s]
			l1events	960271	Number of level 1 events

2.1.4 Events

	ccd 0	ccd 1	ccd 2	ccd 3	ccd 6	ccd 7		ccd 0	ccd 1	ccd 2	ccd 3	ccd 6	ccd 7
level 1 events	149859	151226	153447	156177	160788	188774	grade 0 events	39503	39044	40162	40466	42709	20500
rejected events	75281	76340	79076	81469	80938	74510		26%	25%	26%	25%	26%	10%
rejected %	50%	50%	51%	52%	50%	39%	grade 1 events	342	253	339	325	287	180
								0%	0%	0%	0%	0%	0%
							grade 2 events	13535	14077	12950	12996	13868	24519
								9%	9%	8%	8%	8%	12%
							grade 3 events	5132	5027	5103	5076	5134	10459
								3%	3%	3%	3%	3%	5%
							grade 4 events	4992	5004	5175	5171	5095	10372
								3%	3%	3%	3%	3%	5%
							grade 5 events	4214	4482	4086	4642	4653	12063
								2%	2%	2%	2%	2%	6%
							grade 6 events	11416	11734	10981	10999	13044	48414
								7%	7%	7%	7%	8%	25%
							grade 7 events	70725	71605	74651	76502	75998	62267
								47%	47%	48%	48%	47%	32%

2.2 Compared Parameters

Parameter	Planned	Actual	Parameter	Planned	Actual
Instrument	ACIS	ACIS	Obspar format version number	7	7
Detector	ACIS-012367	ACIS-012367	Obspar file type	PREDICTED	ACTUAL
Grating	NONE	NONE	Obspar update status	NONE	UPDATED
Data mode	FAINT	FAINT	Number of optional ACIS chips dropped	0	0
Observation mode	SECONDARY	SECONDARY	On-chip summing requested	N	N
[deg] Pointing RA	0	351.985598305975	Subarray requested	NONE	NONE
[deg] Pointing Dec	0	23.97200781053857	Alternating exposures requested	N	N
[deg] Pointing Roll	0.0	201.7824754039613	[s] Primary exposure time	3.2	3.2
[mm] SIM focus pos	-1.429586	-0.6828225247311905			
[mm] SIM defocus	0.1037507710433287	0.8505141146731063			
[mm] SIM translation stage pos	250.455976	250.466033080201			
[mm] SIM translation stage offset	0	-0.01005468664627074			
[s] Observation start time (MET)	370149217.768626	370149216.74363			
Observation start date	2009-09-24T03:13:38	2009-09-24T03:13:36			
[s] Observation end time (MET)	370162243.46928	370162242.44429			
Observation end date	2009-09-24T06:50:43	2009-09-24T06:50:42			
Read mode	TIMED	TIMED			

2.3 Star Slots

2.4 FID Slots

A Summary

A.1 Status

V&V Scientist	Beth Sundheim
V&V Date (YYYY-MM-DD)	2012.06.18
V&V Edition	1
V&V Disposition and Status	OK
V&V Charge Time	8.4511999685764

A.2 Comments