

V&V Reference Report

L2 ASCDS Version : 8.4.5

Observation 56745 - L2 Version 2
Chandra X-Ray Center

L2 Processing Date : Jun 15 2012

Contents

1	Front	2
2	OBI	3
2.1	OBI	3
2.1.1	Images	3
2.1.2	Bias	3
2.1.3	Parameters	4
2.1.4	Events	4
2.2	Compared Parameters	5
2.3	Star Slots	6
2.4	FID Slots	6
A	Summary	7
A.1	Status	7
A.2	Comments	7

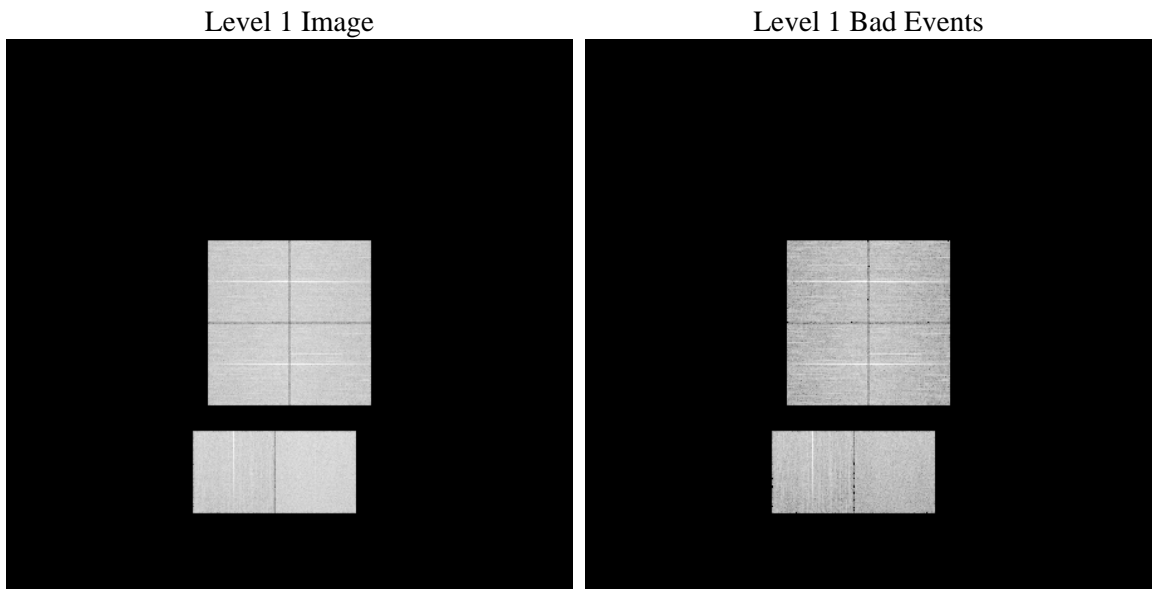
1 Front

seq_num	 	Sequence number
obs_id	56745	Observation id
title	ACIS-012367 diagnostics	Proposal title
observer	CHANDRA engineering request/realtime commanding	Principal investig
object	 	Source name
dtcycle	0	
cycle	P	events from which exps? Prim/Second/Both
ra_targ	0.0	Observer's specified target RA [deg]
dec_targ	0.0	Observer's specified target Dec [deg]
ra_nom	19.477702563447	Nominal RA [deg]
dec_nom	33.974262429332	Nominal Dec [deg]
roll_nom	187.93242307929	Nominal Roll [deg]
revision	2	Processing version of data
ontime	8271.999969244	Sum of GTIs [s]
livetime	8167.254924833	Livetime [s]
ontime0	8271.999969244	Sum of GTIs [s]
ontime1	8271.999969244	Sum of GTIs [s]
ontime2	8268.7589688897	Sum of GTIs [s]
ontime3	8268.7589589357	Sum of GTIs [s]
ontime6	8271.999969244	Sum of GTIs [s]
ontime7	8271.999969244	Sum of GTIs [s]
l2events	448337	Number of level 2 events

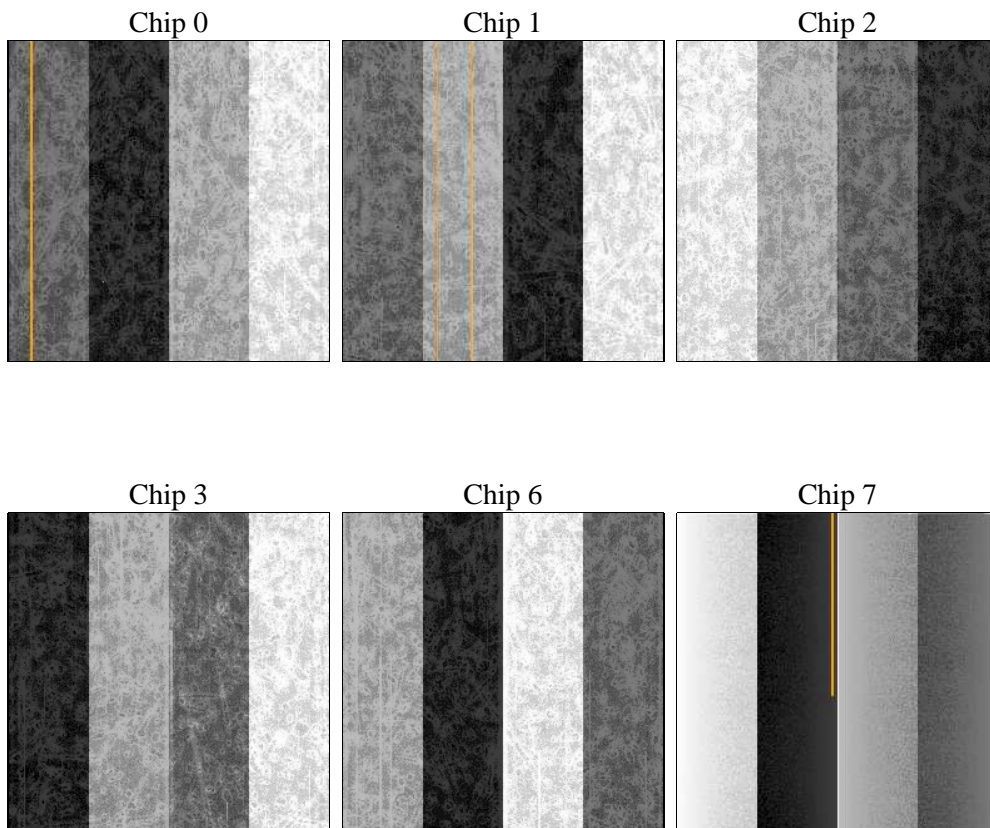
2 OBI

2.1 OBI

2.1.1 Images



2.1.2 Bias



2.1.3 Parameters

obi_num	0	Obi number	sched_exp_time	0.0	[s] Scheduled observation exposure time
ascdsver	8.4.5	Processing system revision	ontime	8271.999969244	Sum of GTIs [s]
caldsver	4.4.10	 	ontime0	8271.999969244	Sum of GTIs [s]
date	2012-06-15T17:26:58	Date and time of file creation	ontime1	8271.999969244	Sum of GTIs [s]
revision	2	Processing version of data	ontime2	8268.7589688897	Sum of GTIs [s]
			ontime3	8268.7589589357	Sum of GTIs [s]
			ontime6	8271.999969244	Sum of GTIs [s]
			ontime7	8271.999969244	Sum of GTIs [s]
			l1events	931020	Number of level 1 events

2.1.4 Events

	ccd 0	ccd 1	ccd 2	ccd 3	ccd 6	ccd 7		ccd 0	ccd 1	ccd 2	ccd 3	ccd 6	ccd 7
level 1 events	145870	146611	148755	151124	154174	184486	grade 0 events	38042	37918	38775	39214	38971	20487
rejected events	74350	73932	77134	78694	79542	72708		26%	25%	26%	25%	25%	11%
rejected %	50%	50%	51%	52%	51%	39%	grade 1 events	308	247	338	357	255	158
								0%	0%	0%	0%	0%	0%
							grade 2 events	13063	13491	12409	12643	13514	24401
								8%	9%	8%	8%	8%	13%
							grade 3 events	4839	4994	4963	4996	4883	10044
								3%	3%	3%	3%	3%	5%
							grade 4 events	4647	4837	4983	5118	4897	10127
								3%	3%	3%	3%	3%	5%
							grade 5 events	4171	4462	3803	4642	4481	11674
								2%	3%	2%	3%	2%	6%
							grade 6 events	10929	11439	10491	10459	12393	46719
								7%	7%	7%	6%	8%	25%
							grade 7 events	69871	69223	72993	73695	74780	60876
								47%	47%	49%	48%	48%	32%

2.2 Compared Parameters

Parameter	Planned	Actual	Parameter	Planned	Actual
Instrument	ACIS	ACIS	Obspar format version number	7	7
Detector	ACIS-012367	ACIS-012367	Obspar file type	PREDICTED	ACTUAL
Grating	NONE	NONE	Obspar update status	NONE	UPDATED
Data mode	FAINT	FAINT	Number of optional ACIS chips dropped	0	0
Observation mode	SECONDARY	SECONDARY	On-chip summing requested	N	N
[deg] Pointing RA	0	19.47770256344715	Subarray requested	NONE	NONE
[deg] Pointing Dec	0	33.97426242933161	Alternating exposures requested	N	N
[deg] Pointing Roll	0.0	187.9324230792924	[s] Primary exposure time	3.2	3.2
[mm] SIM focus pos	-1.429586	-0.7809083437167272			
[mm] SIM defocus	0.1037507710433287	0.7524282956875696			
[mm] SIM translation stage pos	250.455976	250.466033080201			
[mm] SIM translation stage offset	0	-0.01005468664627074			
[s] Observation start time (MET)	372209066.072238	372209065.04723			
Observation start date	2009-10-17T23:24:26	2009-10-17T23:24:25			
[s] Observation end time (MET)	372219154.122746	372219153.09774			
Observation end date	2009-10-18T02:12:34	2009-10-18T02:12:33			
Read mode	TIMED	TIMED			

2.3 Star Slots

2.4 FID Slots

A Summary

A.1 Status

V&V Scientist	Jen Lauer
V&V Date (YYYY-MM-DD)	2012.06.19
V&V Edition	1
V&V Disposition and Status	OK
V&V Charge Time	8.271999969244

A.2 Comments