

V&V Reference Report

L2 ASCDS Version : 8.4.5

Observation 56654 - L2 Version 2
Chandra X-Ray Center

L2 Processing Date : Jun 17 2012

Contents

| | | |
|----------|-------------------------------|----------|
| 1 | Front | 2 |
| 2 | OBI | 3 |
| 2.1 | OBI | 3 |
| 2.1.1 | Images | 3 |
| 2.1.2 | Bias | 3 |
| 2.1.3 | Parameters | 4 |
| 2.1.4 | Events | 4 |
| 2.2 | Compared Parameters | 5 |
| 2.3 | Star Slots | 6 |
| 2.4 | FID Slots | 6 |
| A | Summary | 7 |
| A.1 | Status | 7 |
| A.2 | Comments | 7 |

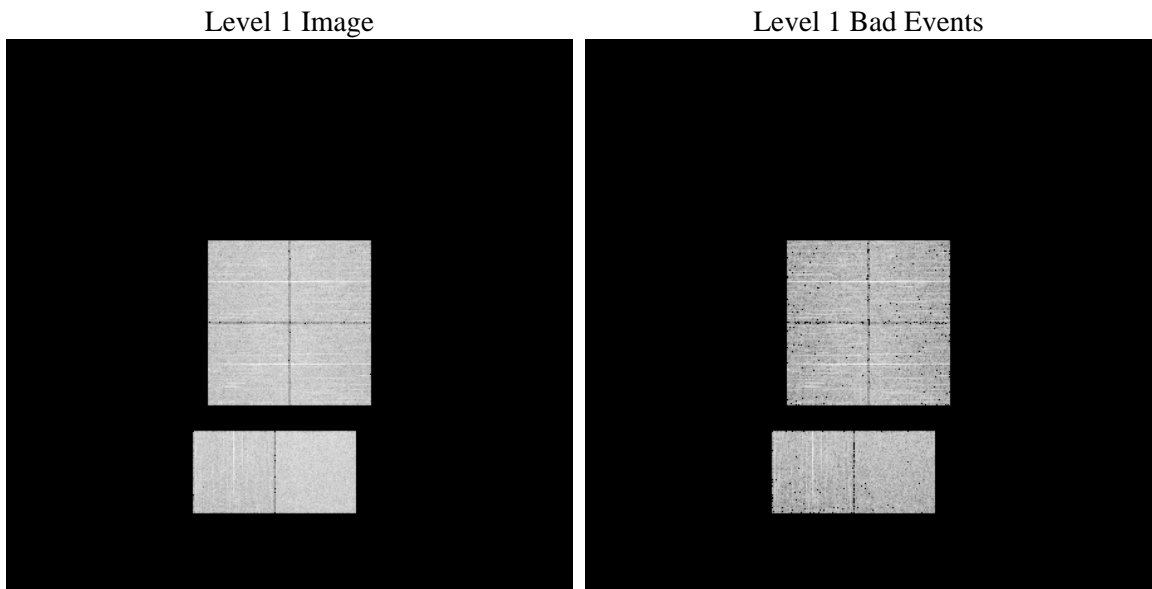
1 Front

| | | |
|----------|-------------------------------------------------|---------------------------------------------|
| seq_num | | Sequence number |
| obs_id | 56654 | Observation id |
| title | ACIS-012367 diagnostics | Proposal title |
| observer | CHANDRA engineering request/realtime commanding | Principal investig |
| object | | Source name |
| dtcycle | 0 | |
| cycle | P | events from which exps? Prim/Second/Both |
| ra_targ | 0.0 | Observer's specified target RA [deg] |
| dec_targ | 0.0 | Observer's specified target Dec [deg] |
| ra_nom | 39.22959548136 | Nominal RA [deg] |
| dec_nom | 26.687928265006 | Nominal Dec [deg] |
| roll_nom | 250.59979149315 | Nominal Roll [deg] |
| revision | 2 | Processing version of data |
| ontime | 2998.3999888897 | Sum of GTIs [s] |
| livetime | 2960.4324428107 | Livetime [s] |
| ontime0 | 2998.3999888897 | Sum of GTIs [s] |
| ontime1 | 2998.3999888897 | Sum of GTIs [s] |
| ontime2 | 2998.3999888897 | Sum of GTIs [s] |
| ontime3 | 2998.3999888897 | Sum of GTIs [s] |
| ontime6 | 2998.3999888897 | Sum of GTIs [s] |
| ontime7 | 2998.3999888897 | Sum of GTIs [s] |
| l2events | 166230 | Number of level 2 events |

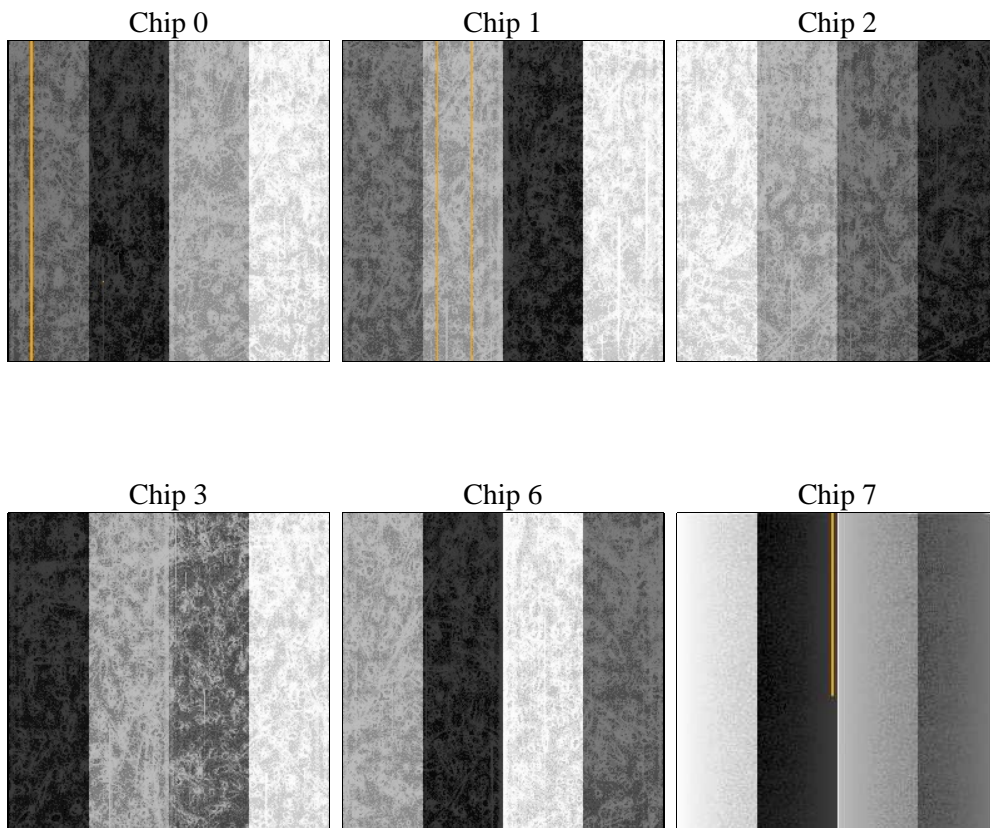
2 OBI

2.1 OBI

2.1.1 Images



2.1.2 Bias



2.1.3 Parameters

| | | | | | |
|----------|---------------------|--------------------------------|----------------|-----------------|-----------------------------------------|
| obi_num | 1 | Obi number | sched_exp_time | 0.0 | [s] Scheduled observation exposure time |
| ascdsver | 8.4.5 | Processing system revision | ontime | 2998.3999888897 | Sum of GTIs [s] |
| caldsver | 4.4.10 | | ontime0 | 2998.3999888897 | Sum of GTIs [s] |
| date | 2012-06-17T05:47:40 | Date and time of file creation | ontime1 | 2998.3999888897 | Sum of GTIs [s] |
| revision | 2 | Processing version of data | ontime2 | 2998.3999888897 | Sum of GTIs [s] |
| | | | ontime3 | 2998.3999888897 | Sum of GTIs [s] |
| | | | ontime6 | 2998.3999888897 | Sum of GTIs [s] |
| | | | ontime7 | 2998.3999888897 | Sum of GTIs [s] |
| | | | l1events | 372288 | Number of level 1 events |

2.1.4 Events

| | ccd 0 | ccd 1 | ccd 2 | ccd 3 | ccd 6 | ccd 7 | | ccd 0 | ccd 1 | ccd 2 | ccd 3 | ccd 6 | ccd 7 |
|-----------------|-------|-------|-------|-------|-------|-------|----------------|-------|-------|-------|-------|-------|-------|
| level 1 events | 58835 | 59209 | 60084 | 60010 | 60665 | 73485 | grade 0 events | 15584 | 15457 | 15778 | 15890 | 15594 | 8313 |
| rejected events | 31959 | 32254 | 33393 | 33211 | 33083 | 32237 | | 26% | 26% | 26% | 26% | 25% | 11% |
| rejected % | 54% | 54% | 55% | 55% | 54% | 43% | grade 1 events | 116 | 100 | 131 | 117 | 105 | 71 |
| | | | | | | | | 0% | 0% | 0% | 0% | 0% | 0% |
| | | | | | | | grade 2 events | 5388 | 5570 | 5142 | 4975 | 5467 | 9952 |
| | | | | | | | | 9% | 9% | 8% | 8% | 9% | 13% |
| | | | | | | | grade 3 events | 1846 | 1912 | 1883 | 1970 | 2007 | 4110 |
| | | | | | | | | 3% | 3% | 3% | 3% | 3% | 5% |
| | | | | | | | grade 4 events | 1985 | 1896 | 1991 | 2046 | 1978 | 4112 |
| | | | | | | | | 3% | 3% | 3% | 3% | 3% | 5% |
| | | | | | | | grade 5 events | 1701 | 1704 | 1573 | 1798 | 1771 | 4617 |
| | | | | | | | | 2% | 2% | 2% | 2% | 2% | 6% |
| | | | | | | | grade 6 events | 4529 | 4615 | 4296 | 4415 | 5183 | 18678 |
| | | | | | | | | 7% | 7% | 7% | 7% | 8% | 25% |
| | | | | | | | grade 7 events | 27686 | 27955 | 29290 | 28799 | 28560 | 23632 |
| | | | | | | | | 47% | 47% | 48% | 47% | 47% | 32% |

2.2 Compared Parameters

| Parameter | Planned | Actual |
|-----------------------------------|----------------------|----------------------|
| Instrument | ACIS | ACIS |
| Detector | ACIS-012367 | ACIS-012367 |
| Grating | NONE | NONE |
| Data mode | FAINT | FAINT |
| Observation mode | SECONDARY | SECONDARY |
| [deg] Pointing RA | 0 | 39.22959548135998 |
| [deg] Pointing Dec | 0 | 26.68792826500559 |
| [deg] Pointing Roll | 0.0 | 250.5997914931455 |
| [mm] SIM focus pos | -0.78090834371673 | -0.78090834371673 |
| [mm] SIM defocus | 0.7524282194390134 | 0.7524282194390134 |
| [mm] SIM translation stage pos | 250.4660330802 | 250.4660330802 |
| [mm] SIM translation stage offset | -0.01005726120527584 | -0.01005726120527584 |
| [s] Observation start time (MET) | 375368932.131462 | 375368932.131462 |
| Observation start date | 2009-11-23T13:08:52 | 2009-11-23T13:08:52 |
| [s] Observation end time (MET) | 375373480.503602 | 375373480.503602 |
| Observation end date | 2009-11-23T14:24:41 | 2009-11-23T14:24:40 |
| Read mode | TIMED | TIMED |

| Parameter | Planned | Actual |
|---------------------------------------|-----------|----------|
| Obspar format version number | 7 | 7 |
| Obspar file type | PREDICTED | ACTUAL |
| Obspar update status | OVERRIDE | OVERRIDE |
| Number of optional ACIS chips dropped | 0 | 0 |
| On-chip summing requested | N | N |
| Subarray requested | NONE | NONE |
| Alternating exposures requested | N | N |
| [s] Primary exposure time | 3.2 | 3.2 |

2.3 Star Slots

2.4 FID Slots

A Summary

A.1 Status

| | |
|----------------------------|-----------------|
| V&V Scientist | Beth Sundheim |
| V&V Date (YYYY-MM-DD) | 2012.06.20 |
| V&V Edition | 1 |
| V&V Disposition and Status | OK |
| V&V Charge Time | 2.9983999888897 |

A.2 Comments