

# V&V Reference Report

## L2 ASCDS Version : 8.4.5

Observation 56578 - L2 Version 2  
Chandra X-Ray Center

L2 Processing Date : Jun 18 2012

## Contents

<b>1</b>	<b>Front</b>	<b>2</b>
<b>2</b>	<b>OBI</b>	<b>3</b>
2.1	OBI . . . . .	3
2.1.1	Images . . . . .	3
2.1.2	Bias . . . . .	3
2.1.3	Parameters . . . . .	4
2.1.4	Events . . . . .	4
2.2	Compared Parameters . . . . .	5
2.3	Star Slots . . . . .	6
2.4	FID Slots . . . . .	6
<b>A</b>	<b>Summary</b>	<b>7</b>
A.1	Status . . . . .	7
A.2	Comments . . . . .	7

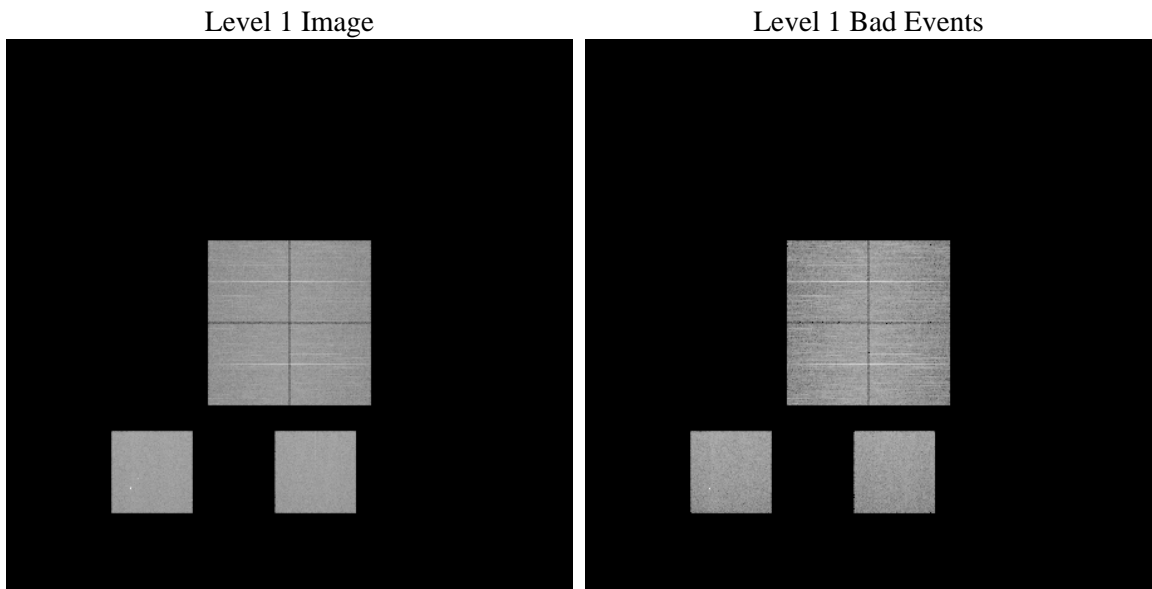
# 1 Front

seq_num	&#160	Sequence number
obs_id	56578	Observation id
title	ACIS-012357 diagnostics	Proposal title
observer	CHANDRA engineering request/realtime commanding	Principal investig
object	&#160	Source name
dtcycle	0	&#160
cycle	P	events from which exps? Prim/Second/Both
ra_targ	0.0	Observer's specified target RA [deg]
dec_targ	0.0	Observer's specified target Dec [deg]
ra_nom	64.011118988242	Nominal RA [deg]
dec_nom	35.468695310519	Nominal Dec [deg]
roll_nom	246.92960125034	Nominal Roll [deg]
revision	2	Processing version of data
ontime	8271.999969244	Sum of GTIs [s]
livetime	8167.254924833	Livetime [s]
ontime0	8271.999969244	Sum of GTIs [s]
ontime1	8271.999969244	Sum of GTIs [s]
ontime2	8271.999969244	Sum of GTIs [s]
ontime3	8271.999969244	Sum of GTIs [s]
ontime5	8271.999969244	Sum of GTIs [s]
ontime7	8271.999969244	Sum of GTIs [s]
l2events	472426	Number of level 2 events

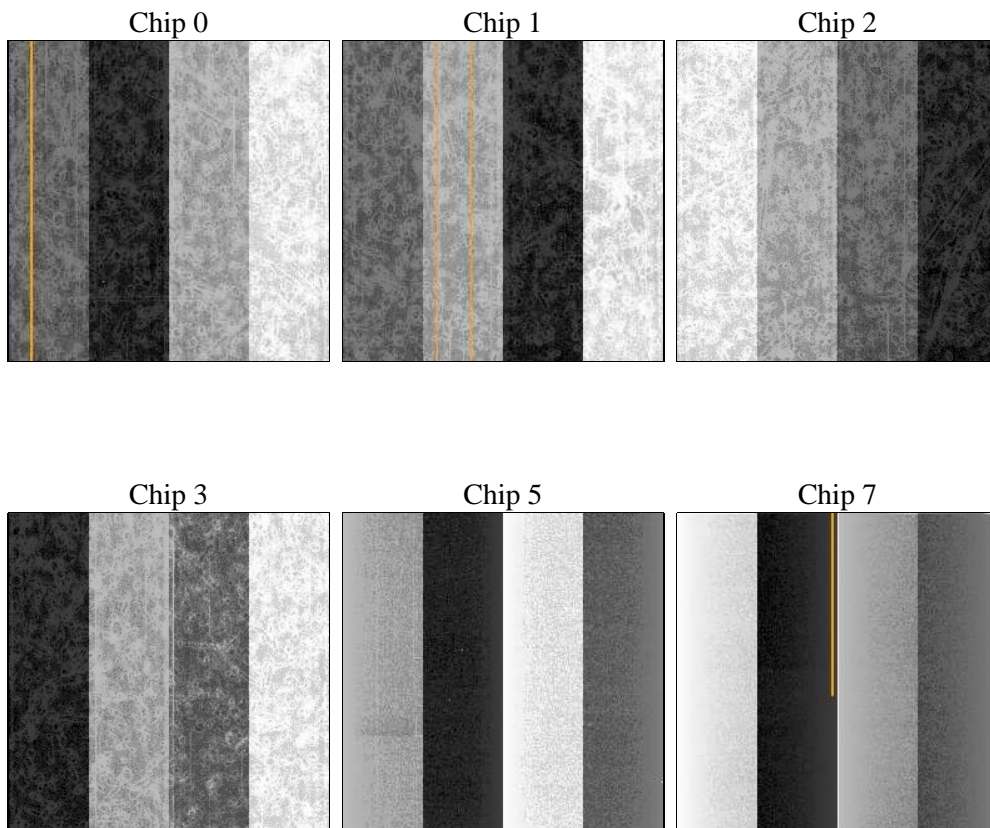
## 2 OBI

### 2.1 OBI

#### 2.1.1 Images



#### 2.1.2 Bias



### 2.1.3 Parameters

obi_num	0	Obi number	sched_exp_time	0.0	[s] Scheduled observation exposure time
ascdsver	8.4.5	Processing system revision	ontime	8271.999969244	Sum of GTIs [s]
caldsver	4.4.10	&#160	ontime0	8271.999969244	Sum of GTIs [s]
date	2012-06-18T09:47:53	Date and time of file creation	ontime1	8271.999969244	Sum of GTIs [s]
revision	2	Processing version of data	ontime2	8271.999969244	Sum of GTIs [s]
			ontime3	8271.999969244	Sum of GTIs [s]
			ontime5	8271.999969244	Sum of GTIs [s]
			ontime7	8271.999969244	Sum of GTIs [s]
			l1events	938415	Number of level 1 events

### 2.1.4 Events

	ccd 0	ccd 1	ccd 2	ccd 3	ccd 5	ccd 7		ccd 0	ccd 1	ccd 2	ccd 3	ccd 5	ccd 7
level 1 events	139928	140750	145855	146406	184978	180498	grade 0 events	36595	36488	37634	37870	13925	19282
rejected events	70510	70723	76430	76560	75749	71966		26%	25%	25%	25%	7%	10%
rejected %	50%	50%	52%	52%	40%	39%	grade 1 events	257	212	308	288	246	158
								0%	0%	0%	0%	0%	0%
							grade 2 events	12862	13184	11994	12104	39086	23461
								9%	9%	8%	8%	21%	12%
							grade 3 events	4757	4692	4791	4796	5276	10005
								3%	3%	3%	3%	2%	5%
							grade 4 events	4545	4669	4738	4752	4683	9782
								3%	3%	3%	3%	2%	5%
							grade 5 events	4026	4314	4069	4486	10398	11703
								2%	3%	2%	3%	5%	6%
							grade 6 events	10659	10994	10268	10348	46259	46002
								7%	7%	7%	7%	25%	25%
							grade 7 events	66227	66197	72053	71762	65105	60105
								47%	47%	49%	49%	35%	33%

## 2.2 Compared Parameters

Parameter	Planned	Actual	Parameter	Planned	Actual
Instrument	ACIS	ACIS	Obspar format version number	7	7
Detector	ACIS-012357	ACIS-012357	Obspar file type	PREDICTED	ACTUAL
Grating	NONE	NONE	Obspar update status	NONE	UPDATED
Data mode	FAINT	FAINT	Number of optional ACIS chips dropped	0	0
Observation mode	SECONDARY	SECONDARY	On-chip summing requested	N	N
[deg] Pointing RA	0	64.01111898824217	Subarray requested	NONE	NONE
[deg] Pointing Dec	0	35.46869531051887	Alternating exposures requested	N	N
[deg] Pointing Roll	0.0	246.9296012503364	[s] Primary exposure time	3.2	3.2
[mm] SIM focus pos	-1.429586	-0.6828225247311905			
[mm] SIM defocus	0.1037507710433287	0.8505141146731063			
[mm] SIM translation stage pos	250.455976	250.466033080201			
[mm] SIM translation stage offset	0	-0.01005468664627074			
[s] Observation start time (MET)	377686787.298441	377686786.27344			
Observation start date	2009-12-20T08:59:47	2009-12-20T08:59:46			
[s] Observation end time (MET)	377700077.449113	377700076.42411			
Observation end date	2009-12-20T12:41:17	2009-12-20T12:41:16			
Read mode	TIMED	TIMED			

## **2.3 Star Slots**

## **2.4 FID Slots**

## A Summary

### A.1 Status

V&V Scientist	Beth Sundheim
V&V Date (YYYY-MM-DD)	2012.06.21
V&V Edition	1
V&V Disposition and Status	OK
V&V Charge Time	8.271999969244

### A.2 Comments