

V&V Reference Report

L2 ASCDS Version : 8.4.4

Observation 57887 - L2 Version 2
Chandra X-Ray Center

L2 Processing Date : May 12 2012

Contents

1	Front	2
2	OBI	3
2.1	OBI	3
2.1.1	Images	3
2.1.2	Bias	3
2.1.3	Parameters	4
2.1.4	Events	4
2.2	Compared Parameters	5
2.3	Star Slots	6
2.4	FID Slots	6
A	Summary	7
A.1	Status	7
A.2	Comments	7

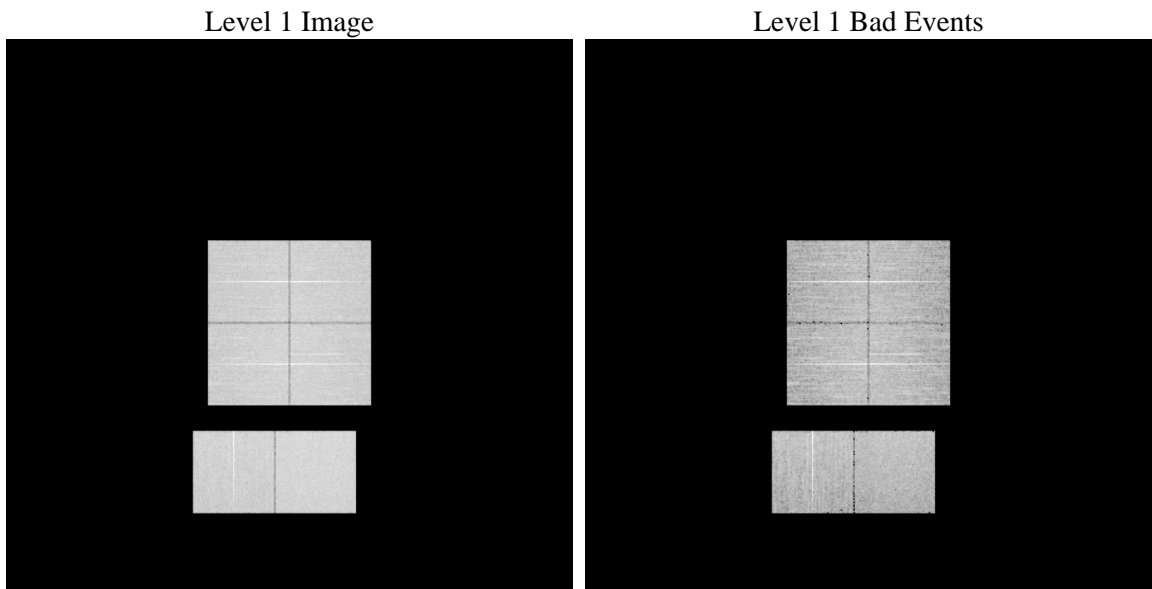
1 Front

seq_num	 	Sequence number
obs_id	57887	Observation id
title	ACIS-012367 diagnostics	Proposal title
observer	CHANDRA engineering request/realtime commanding	Principal investig
object	 	Source name
dtycle	0	
cycle	P	events from which exps? Prim/Second/Both
ra_targ	0.0	Observer's specified target RA [deg]
dec_targ	0.0	Observer's specified target Dec [deg]
ra_nom	201.97009121173	Nominal RA [deg]
dec_nom	18.99504691813	Nominal Dec [deg]
roll_nom	157.09826820398	Nominal Roll [deg]
revision	2	Processing version of data
ontime	8277.0150354505	Sum of GTIs [s]
livetime	8172.2064872515	Livetime [s]
ontime0	8273.7330051064	Sum of GTIs [s]
ontime1	8276.9329554439	Sum of GTIs [s]
ontime2	8276.8919154406	Sum of GTIs [s]
ontime3	8277.0560754538	Sum of GTIs [s]
ontime6	8276.8508754373	Sum of GTIs [s]
ontime7	8277.0150354505	Sum of GTIs [s]
l2events	611359	Number of level 2 events

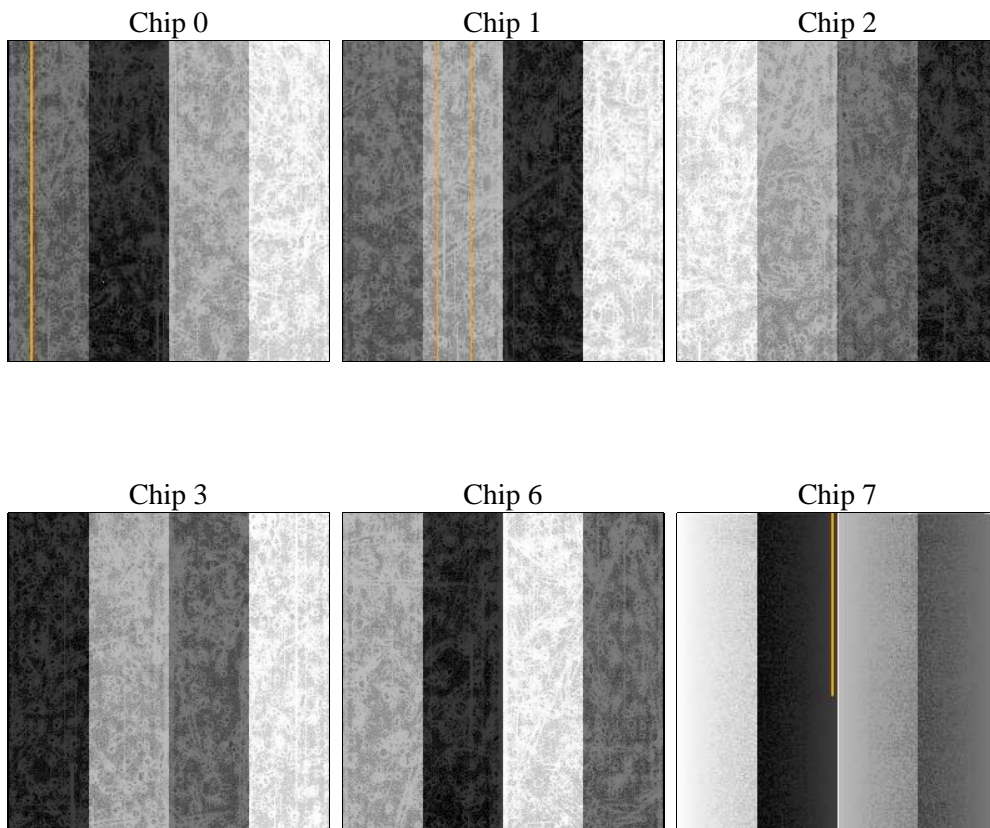
2 OBI

2.1 OBI

2.1.1 Images



2.1.2 Bias



2.1.3 Parameters

obi_num	0	Obi number	sched_exp_time	0.0	[s] Scheduled observation exposure time
ascdsver	8.4.4	Processing system revision	ontime	8277.0150354505	Sum of GTIs [s]
caldsver	4.4.9	 	ontime0	8273.7330051064	Sum of GTIs [s]
date	2012-05-12T13:55:51	Date and time of file creation	ontime1	8276.9329554439	Sum of GTIs [s]
revision	2	Processing version of data	ontime2	8276.8919154406	Sum of GTIs [s]
			ontime3	8277.0560754538	Sum of GTIs [s]
			ontime6	8276.8508754373	Sum of GTIs [s]
			ontime7	8277.0150354505	Sum of GTIs [s]
			l1events	1065903	Number of level 1 events

2.1.4 Events

	ccd 0	ccd 1	ccd 2	ccd 3	ccd 6	ccd 7		ccd 0	ccd 1	ccd 2	ccd 3	ccd 6	ccd 7
level 1 events	167970	168537	174683	176200	176619	201894	grade 0 events	53939	53923	55793	55772	55994	27386
rejected events	67654	67456	73184	74366	71371	66287		32%	31%	31%	31%	31%	13%
rejected %	40%	40%	41%	42%	40%	32%	grade 1 events	406	318	442	407	332	146
								0%	0%	0%	0%	0%	0%
							grade 2 events	18020	18650	17581	17610	18404	28947
								10%	11%	10%	9%	10%	14%
							grade 3 events	6690	6572	6830	6901	6852	12856
								3%	3%	3%	3%	3%	6%
							grade 4 events	6634	6546	6743	6818	6739	12756
								3%	3%	3%	3%	3%	6%
							grade 5 events	3863	4026	3598	4280	4243	10685
								2%	2%	2%	2%	2%	5%
							grade 6 events	15033	15390	14552	14733	17259	53662
								8%	9%	8%	8%	9%	26%
							grade 7 events	63385	63112	69144	69679	66796	55456
								37%	37%	39%	39%	37%	27%

2.2 Compared Parameters

Parameter	Planned	Actual	Parameter	Planned	Actual
Instrument	ACIS	ACIS	Obspar format version number	7	7
Detector	ACIS-012367	ACIS-012367	Obspar file type	PREDICTED	ACTUAL
Grating	NONE	NONE	Obspar update status	NONE	UPDATED
Data mode	FAINT	FAINT	On-chip summing requested	N	N
Observation mode	SECONDARY	SECONDARY	Subarray requested	NONE	NONE
[deg] Pointing RA	0	201.9700912117278	Alternating exposures requested	N	N
[deg] Pointing Dec	0	18.99504691813024	[s] Primary exposure time	3.2	3.2
[deg] Pointing Roll	0.0	157.0982682039799			
[mm] SIM focus pos	-1.429586	-0.7809083437167272			
[mm] SIM defocus	0.1037507710433287	0.7524282956875696			
[mm] SIM translation stage pos	250.455976	250.466033080201			
[mm] SIM translation stage offset	0	-0.01005468664627074			
[s] Observation start time (MET)	323535434.703875	323535433.67887			
Observation start date	2008-04-02T14:57:15	2008-04-02T14:57:13			
[s] Observation end time (MET)	323556744.454912	323556743.42991			
Observation end date	2008-04-02T20:52:24	2008-04-02T20:52:23			
Read mode	TIMED	TIMED			

2.3 Star Slots

2.4 FID Slots

A Summary

A.1 Status

V&V Scientist	Jen Lauer
V&V Date (YYYY-MM-DD)	2012.05.15
V&V Edition	1
V&V Disposition and Status	OK
V&V Charge Time	8.2770150354505

A.2 Comments