

V&V Reference Report

L2 ASCDS Version : 8.4.4

Observation 57832 - L2 Version 3
Chandra X-Ray Center

L2 Processing Date : May 13 2012

Contents

1	Front	2
2	OBI	3
2.1	OBI	3
2.1.1	Images	3
2.1.2	Bias	3
2.1.3	Parameters	4
2.1.4	Events	4
2.2	Compared Parameters	5
2.3	Star Slots	6
2.4	FID Slots	6
A	Summary	7
A.1	Status	7
A.2	Comments	7

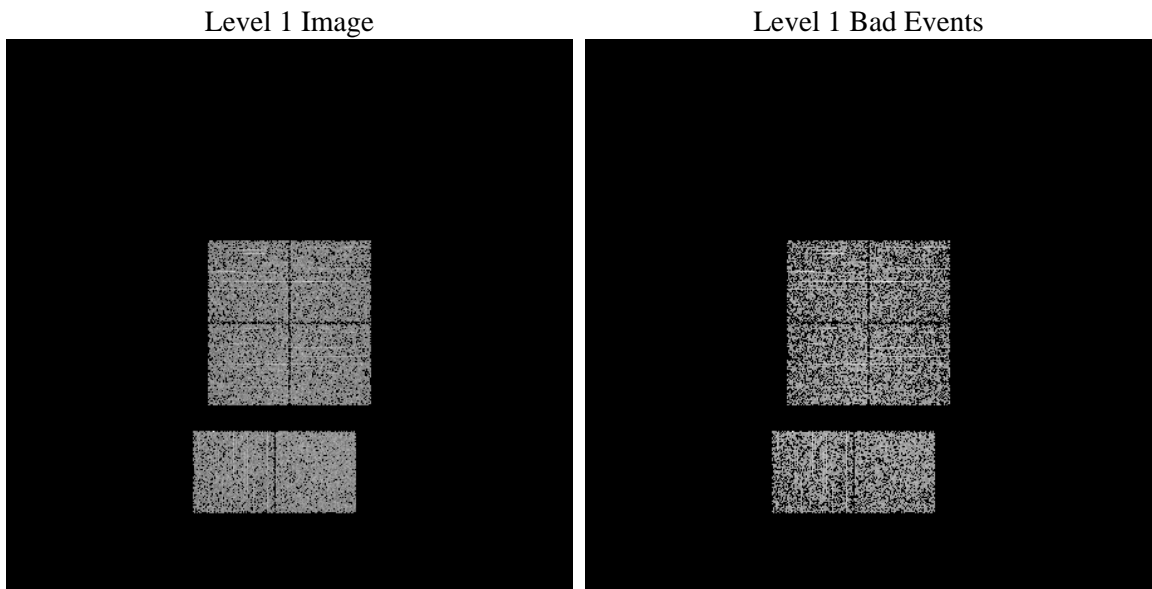
1 Front

seq_num	 	Sequence number
obs_id	57832	Observation id
title	ACIS-012367 diagnostics	Proposal title
observer	CHANDRA engineering request/realtime commanding	Principal investig
object	 	Source name
dtcycle	0	
cycle	P	events from which exps? Prim/Second/Both
ra_targ	0.0	Observer's specified target RA [deg]
dec_targ	0.0	Observer's specified target Dec [deg]
ra_nom	220.03054398668	Nominal RA [deg]
dec_nom	-39.983418068979	Nominal Dec [deg]
roll_nom	356.92860743961	Nominal Roll [deg]
revision	3	Processing version of data
ontime	300.52716422081	Sum of GTIs [s]
livetime	296.72170831171	Livetime [s]
ontime0	300.48612421751	Sum of GTIs [s]
ontime1	300.44508421421	Sum of GTIs [s]
ontime2	300.40404421091	Sum of GTIs [s]
ontime3	300.56820422411	Sum of GTIs [s]
ontime6	300.36300420761	Sum of GTIs [s]
ontime7	300.52716422081	Sum of GTIs [s]
l2events	22079	Number of level 2 events

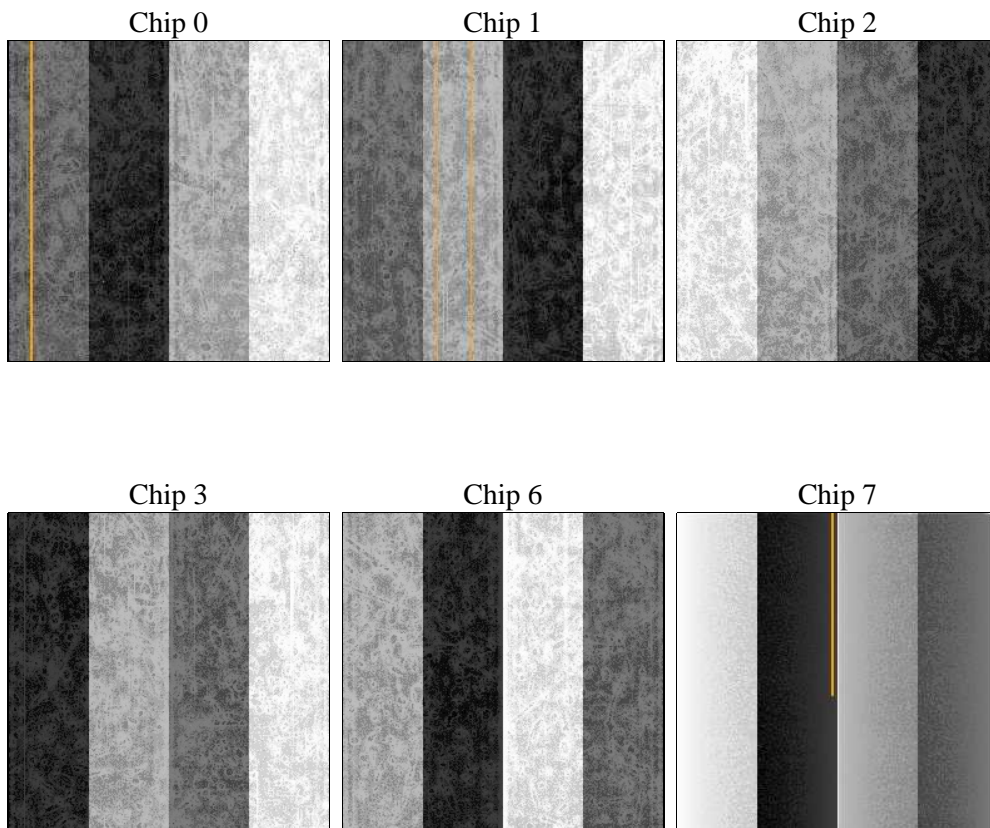
2 OBI

2.1 OBI

2.1.1 Images



2.1.2 Bias



2.1.3 Parameters

obi_num	0	Obi number	sched_exp_time	0.0	[s] Scheduled observation exposure time
ascdsver	8.4.4	Processing system revision	ontime	300.52716422081	Sum of GTIs [s]
caldsver	4.4.9	 	ontime0	300.48612421751	Sum of GTIs [s]
date	2012-05-14T02:39:40	Date and time of file creation	ontime1	300.44508421421	Sum of GTIs [s]
revision	3	Processing version of data	ontime2	300.40404421091	Sum of GTIs [s]
			ontime3	300.56820422411	Sum of GTIs [s]
			ontime6	300.36300420761	Sum of GTIs [s]
			ontime7	300.52716422081	Sum of GTIs [s]
			l1events	60871	Number of level 1 events

2.1.4 Events

	ccd 0	ccd 1	ccd 2	ccd 3	ccd 6	ccd 7
level 1 events	9824	9440	9951	9844	10428	11384
rejected events	6294	5838	6226	6183	6590	6432
rejected %	64%	61%	62%	62%	63%	56%

	ccd 0	ccd 1	ccd 2	ccd 3	ccd 6	ccd 7
grade 0 events	3008	3047	3155	3221	3087	1510
	30%	32%	31%	32%	29%	13%
grade 1 events	16	14	20	24	24	8
	0%	0%	0%	0%	0%	0%
grade 2 events	1001	1040	980	1049	1164	1685
	10%	11%	9%	10%	11%	14%
grade 3 events	381	368	394	394	359	752
	3%	3%	3%	4%	3%	6%
grade 4 events	339	405	386	384	368	776
	3%	4%	3%	3%	3%	6%
grade 5 events	218	219	250	244	206	607
	2%	2%	2%	2%	1%	5%
grade 6 events	825	901	862	805	1014	2971
	8%	9%	8%	8%	9%	26%
grade 7 events	4036	3446	3904	3723	4206	3075
	41%	36%	39%	37%	40%	27%

2.2 Compared Parameters

Parameter	Planned	Actual
Instrument	ACIS	ACIS
Detector	ACIS-012367	ACIS-012367
Grating	NONE	NONE
Data mode	FAINT	FAINT
Observation mode	SECONDARY	SECONDARY
[deg] Pointing RA	220.0305464644546	220.030543986683
[deg] Pointing Dec	-39.98341762390174	-39.98341806897876
[deg] Pointing Roll	356.9286099216267	356.928607439605
[mm] SIM focus pos	-0.68282252473119	-0.68282252473119
[mm] SIM defocus	0.8505140384245534	0.8505140384245534
[mm] SIM translation stage pos	250.4660330802	250.4660330802
[mm] SIM translation stage offset	-0.01005726120527584	-0.01005726120527584
[s] Observation start time (MET)	326245579.935865	326245579.935865
Observation start date	2008-05-04T00:16:00	2008-05-03T23:46:19
[s] Observation end time (MET)	326247776.615503	326247776.615503
Observation end date	2008-05-04T00:16:00	2008-05-04T00:22:56
Read mode	TIMED	TIMED

Parameter	Planned	Actual
Obspar format version number	7	7
Obspar file type	PREDICTED	ACTUAL
Obspar update status	OVERRIDE	OVERRIDE
Number of optional ACIS chips dropped	0	0
On-chip summing requested	N	N
Subarray requested	NONE	NONE
Alternating exposures requested	N	N
[s] Primary exposure time	3.2	3.2

2.3 Star Slots

2.4 FID Slots

A Summary

A.1 Status

V&V Scientist	Jen Lauer
V&V Date (YYYY-MM-DD)	2012.05.15
V&V Edition	1
V&V Disposition and Status	OK
V&V Charge Time	0.30052716422081

A.2 Comments