

V&V Reference Report

L2 ASCDS Version : 8.4.4

Observation 57795 - L2 Version 2
Chandra X-Ray Center

L2 Processing Date : May 15 2012

Contents

1	Front	2
2	OBI	3
2.1	OBI	3
2.1.1	Images	3
2.1.2	Bias	3
2.1.3	Parameters	4
2.1.4	Events	4
2.2	Compared Parameters	5
2.3	Star Slots	6
2.4	FID Slots	6
A	Summary	7
A.1	Status	7
A.2	Comments	7

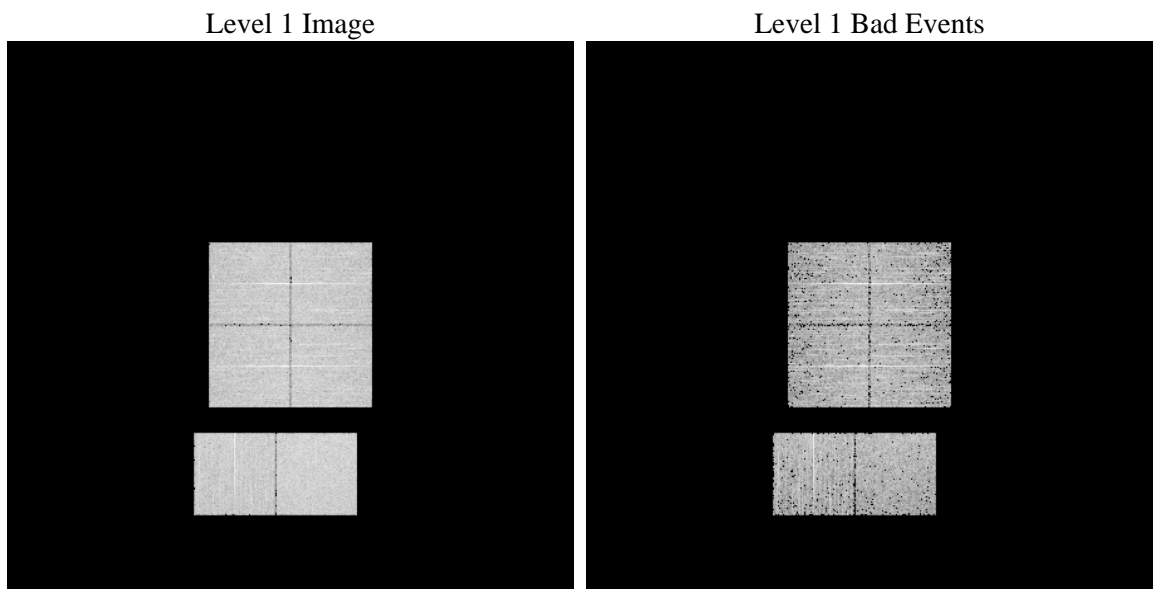
1 Front

seq_num	 	Sequence number
obs_id	57795	Observation id
title	ACIS-012367 diagnostics	Proposal title
observer	CHANDRA engineering request/realtime commanding	Principal investig
object	 	Source name
dtcycle	0	
cycle	P	events from which exps? Prim/Second/Both
ra_targ	0.0	Observer's specified target RA [deg]
dec_targ	0.0	Observer's specified target Dec [deg]
ra_nom	270.97857989509	Nominal RA [deg]
dec_nom	-17.979825376513	Nominal Dec [deg]
roll_nom	102.27987701713	Nominal Roll [deg]
revision	2	Processing version of data
ontime	2795.9752042294	Sum of GTIs [s]
livetime	2760.5708826593	Livetime [s]
ontime0	2795.9341642261	Sum of GTIs [s]
ontime1	2795.8931242228	Sum of GTIs [s]
ontime2	2795.8520842195	Sum of GTIs [s]
ontime3	2796.0162442327	Sum of GTIs [s]
ontime6	2795.8110442162	Sum of GTIs [s]
ontime7	2795.9752042294	Sum of GTIs [s]
l2events	200993	Number of level 2 events

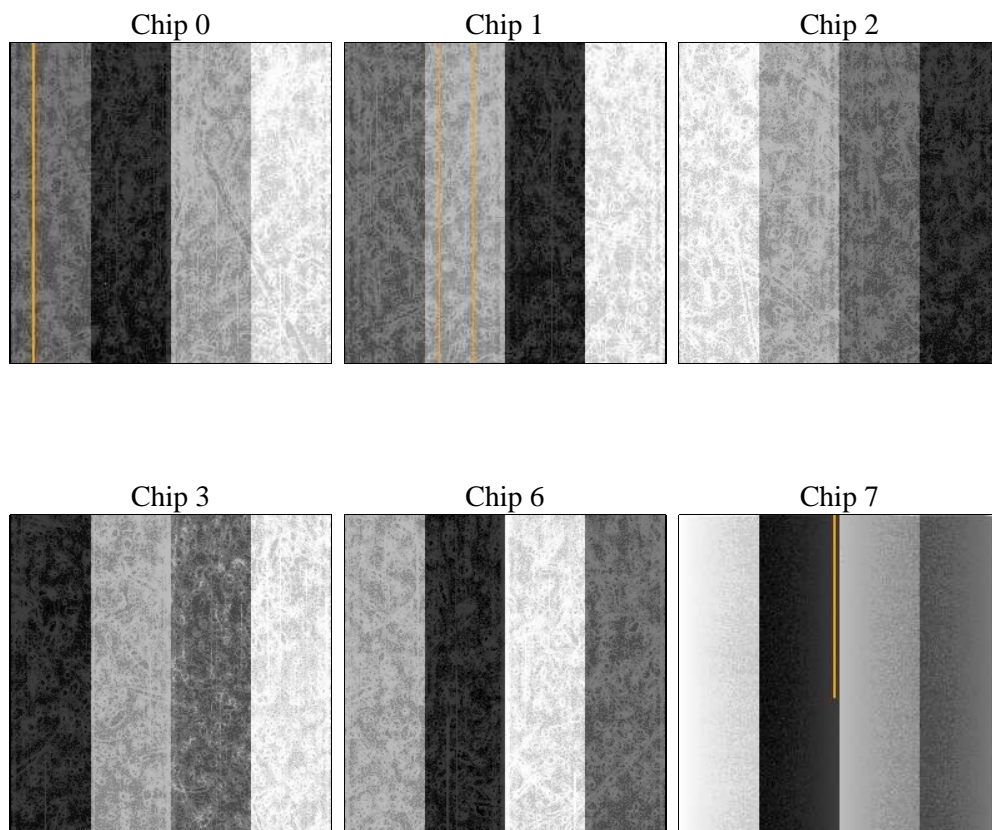
2 OBI

2.1 OBI

2.1.1 Images



2.1.2 Bias



2.1.3 Parameters

obi_num	0	Obi number	sched_exp_time	0.0	[s] Scheduled observation exposure time
ascdsver	8.4.4	Processing system revision	ontime	2795.9752042294	Sum of GTIs [s]
caldsver	4.4.9	 	ontime0	2795.9341642261	Sum of GTIs [s]
date	2012-05-15T17:49:37	Date and time of file creation	ontime1	2795.8931242228	Sum of GTIs [s]
revision	2	Processing version of data	ontime2	2795.8520842195	Sum of GTIs [s]
			ontime3	2796.0162442327	Sum of GTIs [s]
			ontime6	2795.8110442162	Sum of GTIs [s]
			ontime7	2795.9752042294	Sum of GTIs [s]
			l1events	355482	Number of level 1 events

2.1.4 Events

	ccd 0	ccd 1	ccd 2	ccd 3	ccd 6	ccd 7		ccd 0	ccd 1	ccd 2	ccd 3	ccd 6	ccd 7
level 1 events	56275	56688	57721	58754	58881	67163	grade 0 events	17579	17544	18113	18397	18165	9111
rejected events	23526	23720	24485	25116	24458	21991		31%	30%	31%	31%	30%	13%
rejected %	41%	41%	42%	42%	41%	32%	grade 1 events	112	112	156	132	103	47
								0%	0%	0%	0%	0%	0%
							grade 2 events	5869	6028	5809	5790	6126	9705
								10%	10%	10%	9%	10%	14%
							grade 3 events	2201	2148	2273	2262	2196	4320
								3%	3%	3%	3%	3%	6%
							grade 4 events	2142	2149	2255	2350	2205	4253
								3%	3%	3%	3%	3%	6%
							grade 5 events	1241	1339	1343	1534	1443	3621
								2%	2%	2%	2%	2%	5%
							grade 6 events	4958	5099	4786	4839	5731	17783
								8%	8%	8%	8%	9%	26%
							grade 7 events	22173	22269	22986	23450	22912	18323
								39%	39%	39%	39%	38%	27%

2.2 Compared Parameters

Parameter	Planned	Actual	Parameter	Planned	Actual
Instrument	ACIS	ACIS	Obspar format version number	7	7
Detector	ACIS-012367	ACIS-012367	Obspar file type	PREDICTED	ACTUAL
Grating	NONE	NONE	Obspar update status	NONE	UPDATED
Data mode	FAINT	FAINT	On-chip summing requested	N	N
Observation mode	SECONDARY	SECONDARY	Subarray requested	NONE	NONE
[deg] Pointing RA	0	270.9785798950945	Alternating exposures requested	N	N
[deg] Pointing Dec	0	-17.97982537651349	[s] Primary exposure time	3.2	3.2
[deg] Pointing Roll	0.0	102.2798770171321			
[mm] SIM focus pos	-1.429586	-0.6828225247311905			
[mm] SIM defocus	0.1037507710433287	0.8505141146731063			
[mm] SIM translation stage pos	250.455976	250.466033080201			
[mm] SIM translation stage offset	0	-0.01005468664627074			
[s] Observation start time (MET)	328298687.835947	328298686.81097			
Observation start date	2008-05-27T18:04:48	2008-05-27T18:04:46			
[s] Observation end time (MET)	328305428.236275	328305427.2113			
Observation end date	2008-05-27T19:57:08	2008-05-27T19:57:07			
Read mode	TIMED	TIMED			

2.3 Star Slots

2.4 FID Slots

A Summary

A.1 Status

V&V Scientist	Jen Lauer
V&V Date (YYYY-MM-DD)	2012.05.21
V&V Edition	1
V&V Disposition and Status	OK
V&V Charge Time	2.7959752042294

A.2 Comments