

V&V Reference Report

L2 ASCDS Version : 8.4.4

Observation 57791 - L2 Version 2
Chandra X-Ray Center

L2 Processing Date : May 15 2012

Contents

1	Front	2
2	OBI	3
2.1	OBI	3
2.1.1	Images	3
2.1.2	Bias	3
2.1.3	Parameters	4
2.1.4	Events	4
2.2	Compared Parameters	5
2.3	Star Slots	6
2.4	FID Slots	6
A	Summary	7
A.1	Status	7
A.2	Comments	7

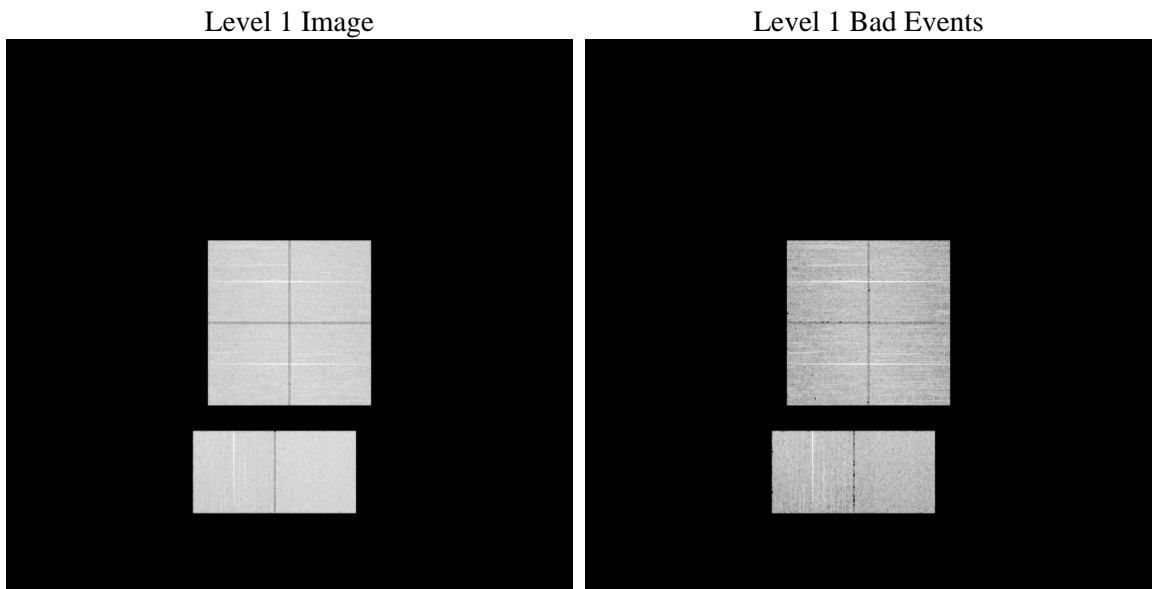
1 Front

seq_num	 	Sequence number
obs_id	57791	Observation id
title	ACIS-012367 diagnostics	Proposal title
observer	CHANDRA engineering request/realtime commanding	Principal investig
object	 	Source name
dtcycle	0	
cycle	P	events from which exps? Prim/Second/Both
ra_targ	0.0	Observer's specified target RA [deg]
dec_targ	0.0	Observer's specified target Dec [deg]
ra_nom	230.83829366261	Nominal RA [deg]
dec_nom	-42.400214756688	Nominal Dec [deg]
roll_nom	325.45983701157	Nominal Roll [deg]
revision	2	Processing version of data
ontime	8172.5377073884	Sum of GTIs [s]
livetime	8069.052114026	Livetime [s]
ontime0	8172.4966673851	Sum of GTIs [s]
ontime1	8172.4556273818	Sum of GTIs [s]
ontime2	8172.4145873785	Sum of GTIs [s]
ontime3	8172.5787473917	Sum of GTIs [s]
ontime6	8172.3735473752	Sum of GTIs [s]
ontime7	8172.5377073884	Sum of GTIs [s]
l2events	583589	Number of level 2 events

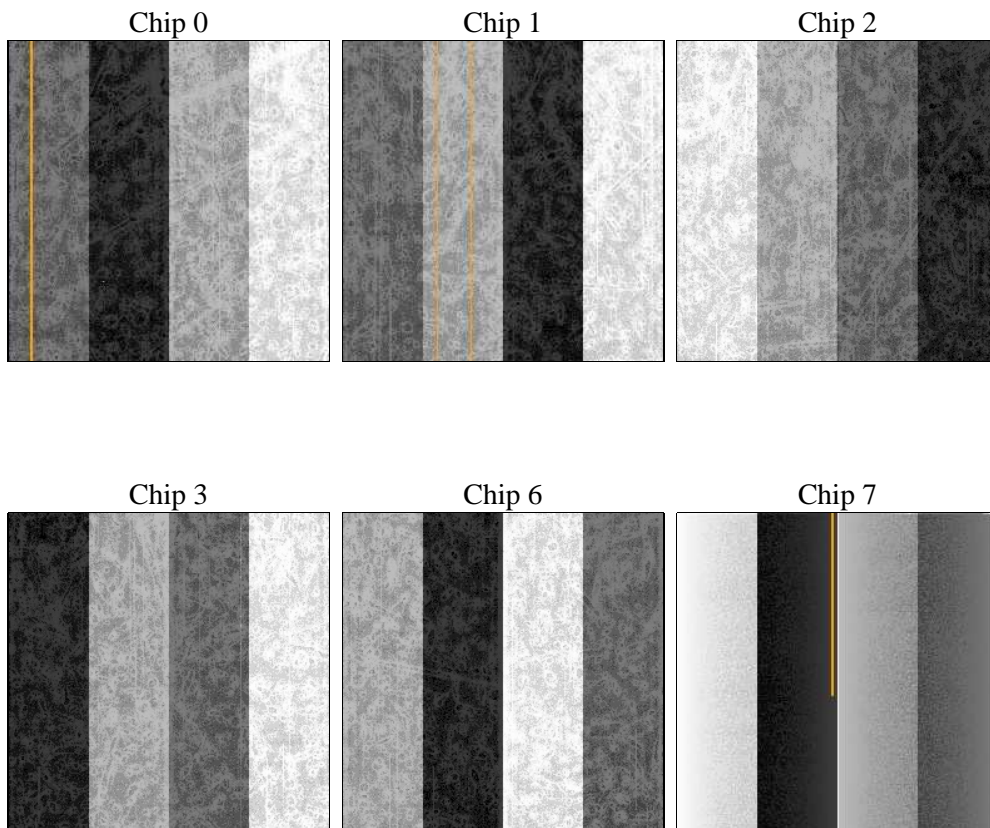
2 OBI

2.1 OBI

2.1.1 Images



2.1.2 Bias



2.1.3 Parameters

obi_num	0	Obi number	sched_exp_time	0.0	[s] Scheduled observation exposure time
ascdsver	8.4.4	Processing system revision	ontime	8172.5377073884	Sum of GTIs [s]
caldsver	4.4.9	 	ontime0	8172.4966673851	Sum of GTIs [s]
date	2012-05-15T18:03:38	Date and time of file creation	ontime1	8172.4556273818	Sum of GTIs [s]
revision	2	Processing version of data	ontime2	8172.4145873785	Sum of GTIs [s]
			ontime3	8172.5787473917	Sum of GTIs [s]
			ontime6	8172.3735473752	Sum of GTIs [s]
			ontime7	8172.5377073884	Sum of GTIs [s]
			l1events	1041644	Number of level 1 events

2.1.4 Events

	ccd 0	ccd 1	ccd 2	ccd 3	ccd 6	ccd 7		ccd 0	ccd 1	ccd 2	ccd 3	ccd 6	ccd 7
level 1 events	167345	165787	166562	170284	175024	196642	grade 0 events	52625	51990	53424	53605	53580	26385
rejected events	70958	69157	70591	73965	74897	66067		31%	31%	32%	31%	30%	13%
rejected %	42%	41%	42%	43%	42%	33%	grade 1 events	363	348	399	363	323	159
								0%	0%	0%	0%	0%	0%
							grade 2 events	17498	18001	16756	16990	18131	28430
								10%	10%	10%	9%	10%	14%
							grade 3 events	6477	6437	6534	6491	6441	12264
								3%	3%	3%	3%	3%	6%
							grade 4 events	6505	6443	6492	6521	6494	12599
								3%	3%	3%	3%	3%	6%
							grade 5 events	3920	3982	3619	4189	4139	10673
								2%	2%	2%	2%	2%	5%
							grade 6 events	14489	14990	13918	13952	16771	52476
								8%	9%	8%	8%	9%	26%
							grade 7 events	65468	63596	65420	68173	69145	53656
								39%	38%	39%	40%	39%	27%

2.2 Compared Parameters

Parameter	Planned	Actual	Parameter	Planned	Actual
Instrument	ACIS	ACIS	Obspar format version number	7	7
Detector	ACIS-012367	ACIS-012367	Obspar file type	PREDICTED	ACTUAL
Grating	NONE	NONE	Obspar update status	NONE	UPDATED
Data mode	FAINT	FAINT	On-chip summing requested	N	N
Observation mode	SECONDARY	SECONDARY	Subarray requested	NONE	NONE
[deg] Pointing RA	0	230.8382936626084	Alternating exposures requested	N	N
[deg] Pointing Dec	0	-42.40021475668812	[s] Primary exposure time	3.2	3.2
[deg] Pointing Roll	0.0	325.4598370115658			
[mm] SIM focus pos	-1.429586	-0.6828225247311905			
[mm] SIM defocus	0.1037507710433287	0.8505141146731063			
[mm] SIM translation stage pos	250.455976	250.466033080201			
[mm] SIM translation stage offset	0	-0.01005468664627074			
[s] Observation start time (MET)	328334347.587713	328334346.56272			
Observation start date	2008-05-28T03:59:08	2008-05-28T03:59:06			
[s] Observation end time (MET)	328356585.988799	328356584.9638			
Observation end date	2008-05-28T10:09:46	2008-05-28T10:09:44			
Read mode	TIMED	TIMED			

2.3 Star Slots

2.4 FID Slots

A Summary

A.1 Status

V&V Scientist	Jen Lauer
V&V Date (YYYY-MM-DD)	2012.05.21
V&V Edition	1
V&V Disposition and Status	OK
V&V Charge Time	8.1725377073884

A.2 Comments