

V&V Reference Report

L2 ASCDS Version : 8.4.4

Observation 57785 - L2 Version 2
Chandra X-Ray Center

L2 Processing Date : May 15 2012

Contents

1	Front	2
2	OBI	3
2.1	OBI	3
2.1.1	Images	3
2.1.2	Bias	3
2.1.3	Parameters	4
2.1.4	Events	4
2.2	Compared Parameters	5
2.3	Star Slots	6
2.4	FID Slots	6
A	Summary	7
A.1	Status	7
A.2	Comments	7

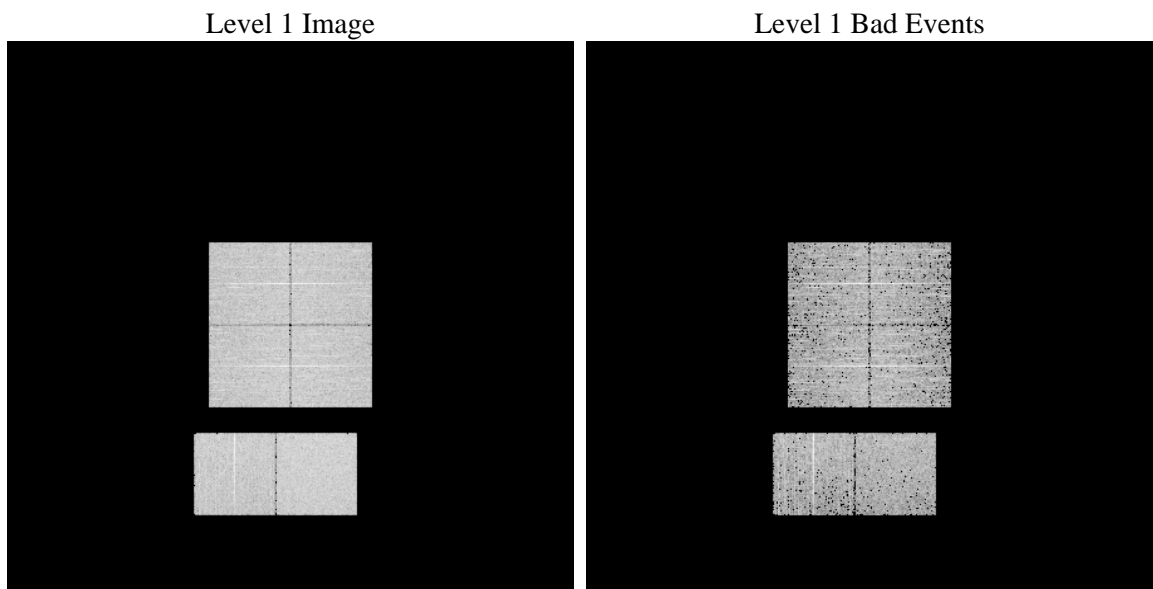
1 Front

seq_num	 	Sequence number
obs_id	57785	Observation id
title	ACIS-012367 diagnostics	Proposal title
observer	CHANDRA engineering request/realtime commanding	Principal investig
object	 	Source name
dtcycle	0	
cycle	P	events from which exps? Prim/Second/Both
ra_targ	0.0	Observer's specified target RA [deg]
dec_targ	0.0	Observer's specified target Dec [deg]
ra_nom	270.97738946445	Nominal RA [deg]
dec_nom	-17.980972945608	Nominal Dec [deg]
roll_nom	105.6409627087	Nominal Roll [deg]
revision	2	Processing version of data
ontime	2796.17986691	Sum of GTIs [s]
livetime	2760.7729537778	Livetime [s]
ontime0	2796.1388269067	Sum of GTIs [s]
ontime1	2796.0977869034	Sum of GTIs [s]
ontime2	2796.0567469001	Sum of GTIs [s]
ontime3	2796.2209069133	Sum of GTIs [s]
ontime6	2796.0157068968	Sum of GTIs [s]
ontime7	2796.17986691	Sum of GTIs [s]
l2events	198759	Number of level 2 events

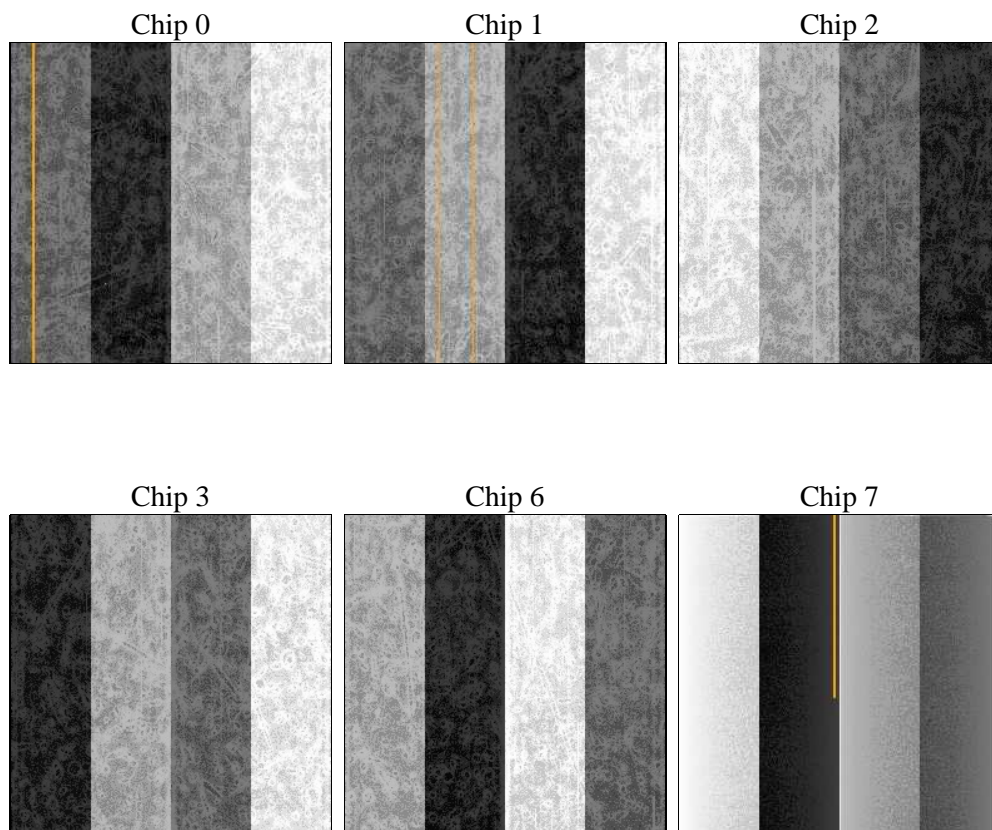
2 OBI

2.1 OBI

2.1.1 Images



2.1.2 Bias



2.1.3 Parameters

obi_num	0	Obi number	sched_exp_time	0.0	[s] Scheduled observation exposure time
ascdsver	8.4.4	Processing system revision	ontime	2796.17986691	Sum of GTIs [s]
caldsver	4.4.9	 	ontime0	2796.1388269067	Sum of GTIs [s]
date	2012-05-16T03:14:43	Date and time of file creation	ontime1	2796.0977869034	Sum of GTIs [s]
revision	2	Processing version of data	ontime2	2796.0567469001	Sum of GTIs [s]
			ontime3	2796.2209069133	Sum of GTIs [s]
			ontime6	2796.0157068968	Sum of GTIs [s]
			ontime7	2796.17986691	Sum of GTIs [s]
			l1events	345601	Number of level 1 events

2.1.4 Events

	ccd 0	ccd 1	ccd 2	ccd 3	ccd 6	ccd 7		ccd 0	ccd 1	ccd 2	ccd 3	ccd 6	ccd 7
level 1 events	54431	54184	56198	56924	57629	66235	grade 0 events	17693	17383	18151	18008	18213	9160
rejected events	21782	21686	23281	23970	23354	21794		32%	32%	32%	31%	31%	13%
rejected %	40%	40%	41%	42%	40%	32%	grade 1 events	113	105	136	139	122	49
								0%	0%	0%	0%	0%	0%
							grade 2 events	5906	5903	5645	5675	6102	9747
								10%	10%	10%	9%	10%	14%
							grade 3 events	2153	2129	2174	2227	2223	4260
								3%	3%	3%	3%	3%	6%
							grade 4 events	2130	2128	2224	2243	2198	4197
								3%	3%	3%	3%	3%	6%
							grade 5 events	1284	1323	1199	1496	1468	3669
								2%	2%	2%	2%	2%	5%
							grade 6 events	4767	4955	4723	4801	5539	17077
								8%	9%	8%	8%	9%	25%
							grade 7 events	20385	20258	21946	22335	21764	18076
								37%	37%	39%	39%	37%	27%

2.2 Compared Parameters

Parameter	Planned	Actual	Parameter	Planned	Actual
Instrument	ACIS	ACIS	Obspar format version number	7	7
Detector	ACIS-012367	ACIS-012367	Obspar file type	PREDICTED	ACTUAL
Grating	NONE	NONE	Obspar update status	NONE	UPDATED
Data mode	FAINT	FAINT	On-chip summing requested	N	N
Observation mode	SECONDARY	SECONDARY	Subarray requested	NONE	NONE
[deg] Pointing RA	0	270.9773894644469	Alternating exposures requested	N	N
[deg] Pointing Dec	0	-17.98097294560828	[s] Primary exposure time	3.2	3.2
[deg] Pointing Roll	0.0	105.6409627086956			
[mm] SIM focus pos	-1.429586	-0.6828225247311905			
[mm] SIM defocus	0.1037507710433287	0.8505141146731063			
[mm] SIM translation stage pos	250.455976	250.466033080201			
[mm] SIM translation stage offset	0	-0.01005468664627074			
[s] Observation start time (MET)	328757127.308388	328757126.28336			
Observation start date	2008-06-02T01:25:27	2008-06-02T01:25:26			
[s] Observation end time (MET)	328769765.559006	328769764.53398			
Observation end date	2008-06-02T04:56:06	2008-06-02T04:56:04			
Read mode	TIMED	TIMED			

2.3 Star Slots

2.4 FID Slots

A Summary

A.1 Status

V&V Scientist	Beth Sundheim
V&V Date (YYYY-MM-DD)	2012.05.21
V&V Edition	1
V&V Disposition and Status	OK
V&V Charge Time	2.79617986691

A.2 Comments