

# V&V Reference Report

## L2 ASCDS Version : 8.4.4

Observation 57682 - L2 Version 2  
Chandra X-Ray Center

L2 Processing Date : May 18 2012

## Contents

<b>1</b>	<b>Front</b>	<b>2</b>
<b>2</b>	<b>OBI</b>	<b>3</b>
2.1	OBI . . . . .	3
2.1.1	Images . . . . .	3
2.1.2	Bias . . . . .	3
2.1.3	Parameters . . . . .	4
2.1.4	Events . . . . .	4
2.2	Compared Parameters . . . . .	5
2.3	Star Slots . . . . .	6
2.4	FID Slots . . . . .	6
<b>A</b>	<b>Summary</b>	<b>7</b>
A.1	Status . . . . .	7
A.2	Comments . . . . .	7

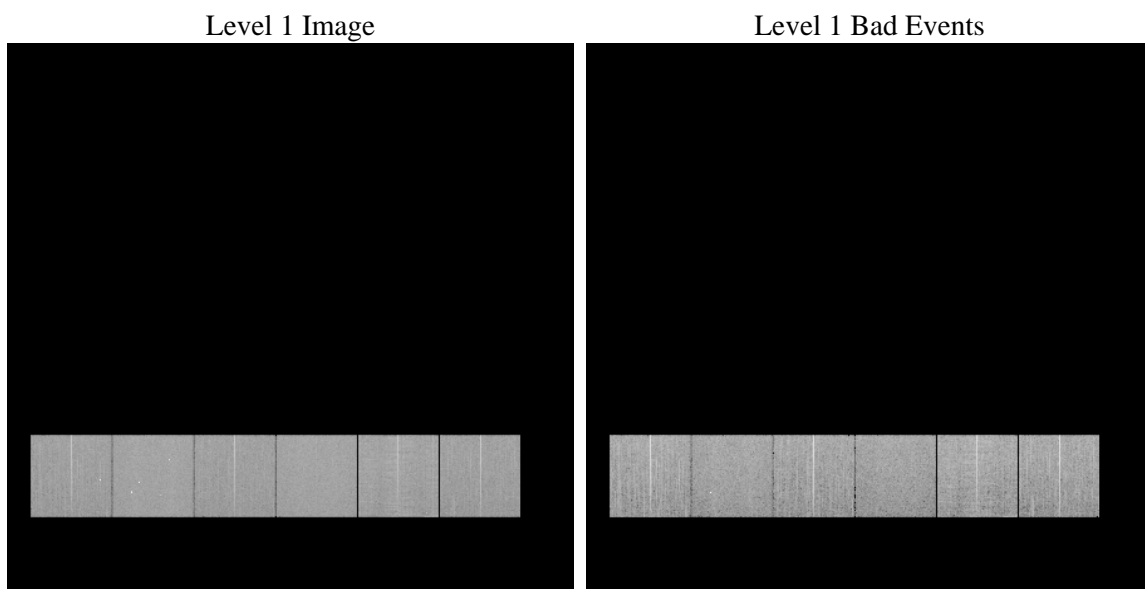
# 1 Front

seq_num	&#160	Sequence number
obs_id	57682	Observation id
title	ACIS-456789 diagnostics	Proposal title
observer	CHANDRA engineering request/realtime commanding	Principal investig
object	&#160	Source name
dtcycle	0	&#160
cycle	P	events from which exps? Prim/Second/Both
ra_targ	0.0	Observer's specified target RA [deg]
dec_targ	0.0	Observer's specified target Dec [deg]
ra_nom	320.47296979556	Nominal RA [deg]
dec_nom	-6.9897684204639	Nominal Dec [deg]
roll_nom	126.25934283553	Nominal Roll [deg]
revision	2	Processing version of data
ontime	8255.2917463779	Sum of GTIs [s]
livetime	8150.7582715454	Livetime [s]
ontime4	8255.168626368	Sum of GTIs [s]
ontime5	8255.2507063746	Sum of GTIs [s]
ontime6	8255.2096663713	Sum of GTIs [s]
ontime7	8255.2917463779	Sum of GTIs [s]
ontime8	8255.1275863647	Sum of GTIs [s]
ontime9	8255.3327863812	Sum of GTIs [s]
l2events	604892	Number of level 2 events

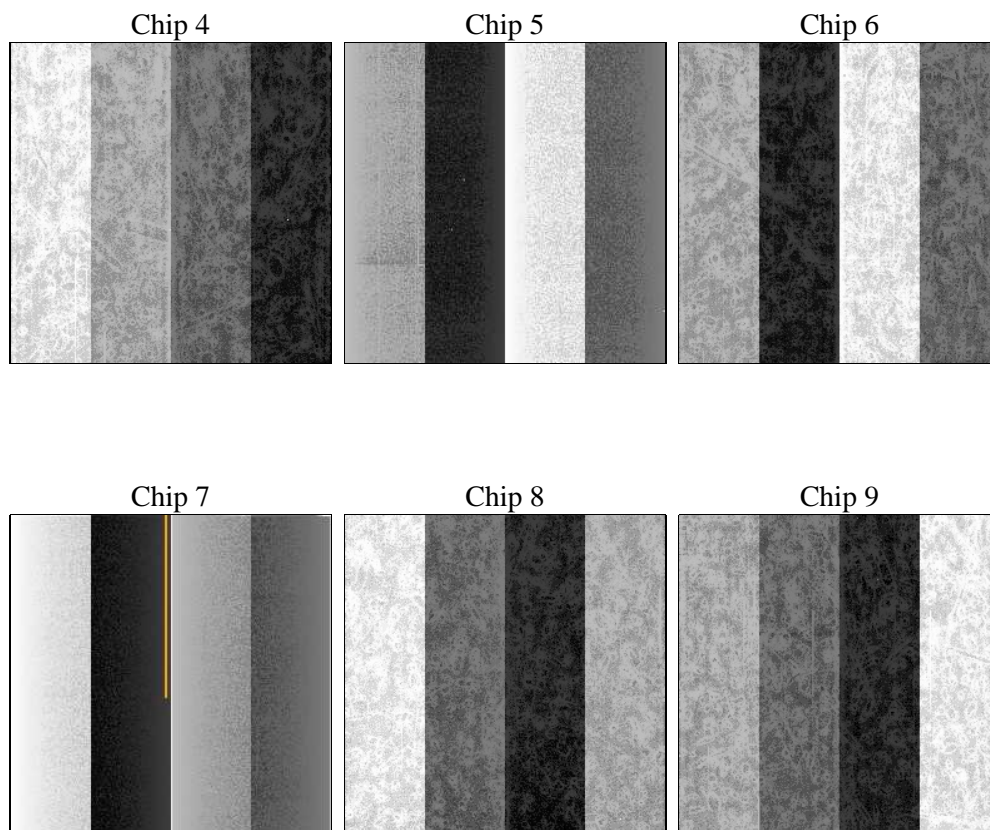
## 2 OBI

### 2.1 OBI

#### 2.1.1 Images



#### 2.1.2 Bias



### 2.1.3 Parameters

obi_num	0	Obi number	sched_exp_time	0.0	[s] Scheduled observation exposure time
ascdsver	8.4.4	Processing system revision	ontime	8255.2917463779	Sum of GTIs [s]
caldsver	4.4.9	&#160	ontime4	8255.168626368	Sum of GTIs [s]
date	2012-05-18T07:33:22	Date and time of file creation	ontime5	8255.2507063746	Sum of GTIs [s]
revision	2	Processing version of data	ontime6	8255.2096663713	Sum of GTIs [s]
			ontime7	8255.2917463779	Sum of GTIs [s]
			ontime8	8255.1275863647	Sum of GTIs [s]
			ontime9	8255.3327863812	Sum of GTIs [s]
			l1events	1117552	Number of level 1 events

### 2.1.4 Events

	ccd 4	ccd 5	ccd 6	ccd 7	ccd 8	ccd 9		ccd 4	ccd 5	ccd 6	ccd 7	ccd 8	ccd 9
level 1 events	176221	199080	174649	195831	196694	175077	grade 0 events	54325	18894	52084	25195	56927	51197
rejected events	82720	71906	75699	66873	84558	79651		30%	9%	29%	12%	28%	29%
rejected %	46%	36%	43%	34%	42%	45%	grade 1 events	540	235	318	143	361	400
								0%	0%	0%	0%	0%	0%
							grade 2 events	14098	47389	17850	28289	20355	16674
								8%	23%	10%	14%	10%	9%
							grade 3 events	6490	5624	6169	12059	8010	6384
								3%	2%	3%	6%	4%	3%
							grade 4 events	6521	5371	6228	11716	7742	6292
								3%	2%	3%	5%	3%	3%
							grade 5 events	4131	9321	4222	10659	5498	4712
								2%	4%	2%	5%	2%	2%
							grade 6 events	12249	50147	16805	51917	19297	15072
								6%	25%	9%	26%	9%	8%
							grade 7 events	77867	62099	70973	55853	78504	74346
								44%	31%	40%	28%	39%	42%

## 2.2 Compared Parameters

Parameter	Planned	Actual
Instrument	ACIS	ACIS
Detector	ACIS-456789	ACIS-456789
Grating	NONE	NONE
Data mode	FAINT	FAINT
Observation mode	SECONDARY	SECONDARY
[deg] Pointing RA	0	320.4729697955553
[deg] Pointing Dec	0	-6.989768420463857
[deg] Pointing Roll	0.0	126.2593428355266
[mm] SIM focus pos	-1.429586	-0.7809083437167272
[mm] SIM defocus	0.1037507710433287	0.7524282956875696
[mm] SIM translation stage pos	250.455976	250.4635187648994
[mm] SIM translation stage offset	0	-0.007540371344731511
[s] Observation start time (MET)	332904191.411215	332904190.3862
Observation start date	2008-07-20T01:23:11	2008-07-20T01:23:10
[s] Observation end time (MET)	332925501.162259	332925500.13724
Observation end date	2008-07-20T07:18:21	2008-07-20T07:18:20
Read mode	TIMED	TIMED

Parameter	Planned	Actual
Obspar format version number	7	7
Obspar file type	PREDICTED	ACTUAL
Obspar update status	NONE	UPDATED
On-chip summing requested	N	N
Subarray requested	NONE	NONE
Alternating exposures requested	N	N
[s] Primary exposure time	3.2	3.2

## 2.3 Star Slots

## 2.4 FID Slots

## A Summary

### A.1 Status

V&V Scientist	Beth Sundheim
V&V Date (YYYY-MM-DD)	2012.05.25
V&V Edition	1
V&V Disposition and Status	OK
V&V Charge Time	8.2552917463779

### A.2 Comments