

V&V Reference Report

L2 ASCDS Version : 8.4.4

Observation 57656 - L2 Version 3
Chandra X-Ray Center

L2 Processing Date : May 20 2012

Contents

1	Front	2
2	OBI	3
2.1	OBI	3
2.1.1	Images	3
2.1.2	Bias	3
2.1.3	Parameters	4
2.1.4	Events	4
2.2	Compared Parameters	5
2.3	Star Slots	6
2.4	FID Slots	6
A	Summary	7
A.1	Status	7
A.2	Comments	7

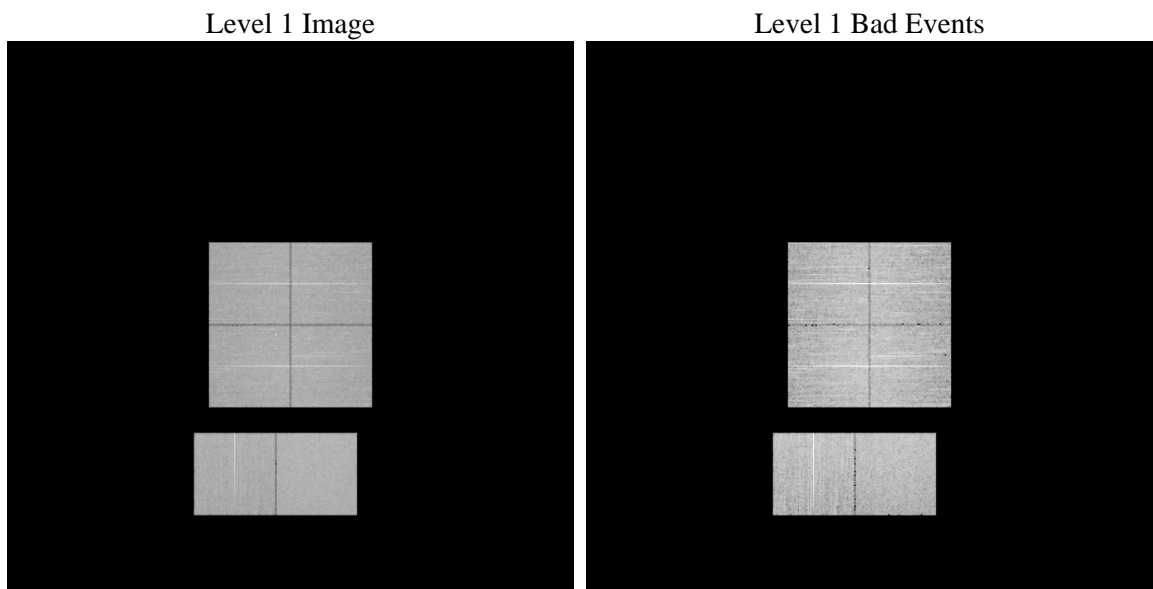
1 Front

seq_num	 	Sequence number
obs_id	57656	Observation id
title	ACIS-012367 diagnostics	Proposal title
observer	CHANDRA engineering request/realtime commanding	Principal investig
object	 	Source name
dtcycle	0	
cycle	P	events from which exps? Prim/Second/Both
ra_targ	0.0	Observer's specified target RA [deg]
dec_targ	0.0	Observer's specified target Dec [deg]
ra_nom	283.00541575691	Nominal RA [deg]
dec_nom	-4.0282227068648	Nominal Dec [deg]
roll_nom	247.89057301092	Nominal Roll [deg]
revision	3	Processing version of data
ontime	8274.1017786264	Sum of GTIs [s]
livetime	8169.3301198395	Livetime [s]
ontime0	8274.0607386231	Sum of GTIs [s]
ontime1	8274.0196986198	Sum of GTIs [s]
ontime2	8273.9786586165	Sum of GTIs [s]
ontime3	8270.9018083811	Sum of GTIs [s]
ontime6	8273.9376186132	Sum of GTIs [s]
ontime7	8274.1017786264	Sum of GTIs [s]
l2events	569162	Number of level 2 events

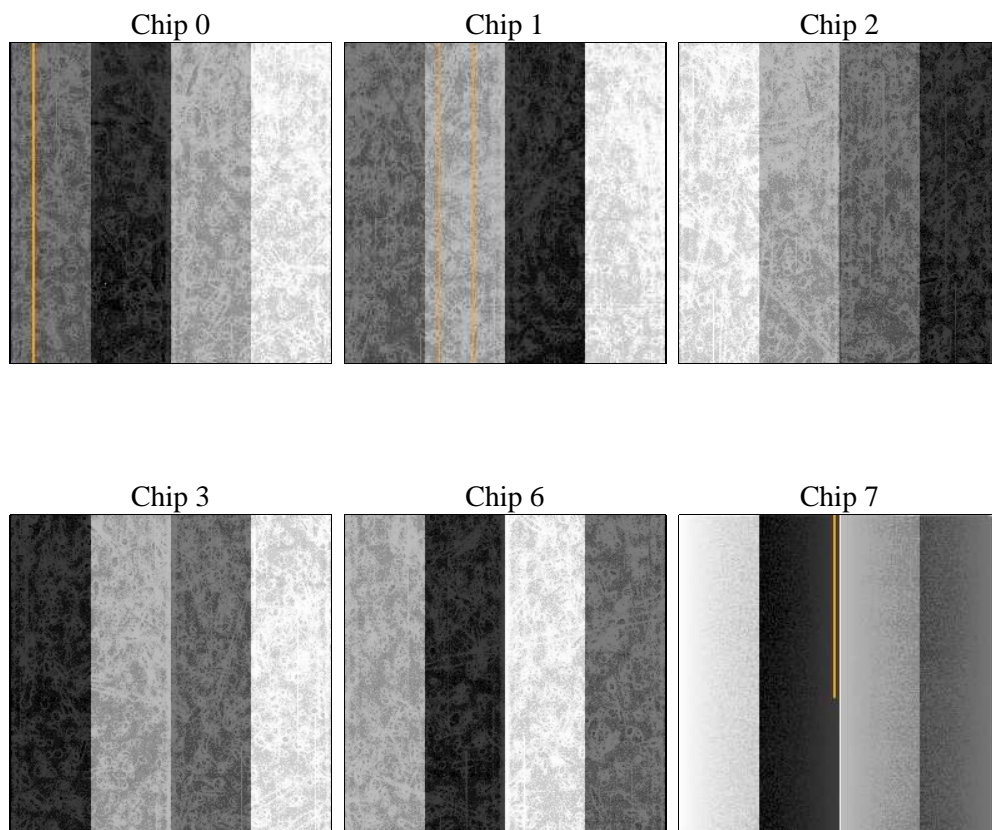
2 OBI

2.1 OBI

2.1.1 Images



2.1.2 Bias



2.1.3 Parameters

obi_num	0	Obi number	sched_exp_time	0.0	[s] Scheduled observation exposure time
ascdsver	8.4.4	Processing system revision	ontime	8274.1017786264	Sum of GTIs [s]
caldsver	4.4.9	 	ontime0	8274.0607386231	Sum of GTIs [s]
date	2012-05-20T01:47:56	Date and time of file creation	ontime1	8274.0196986198	Sum of GTIs [s]
revision	3	Processing version of data	ontime2	8273.9786586165	Sum of GTIs [s]
			ontime3	8270.9018083811	Sum of GTIs [s]
			ontime6	8273.9376186132	Sum of GTIs [s]
			ontime7	8274.1017786264	Sum of GTIs [s]
			l1events	1025198	Number of level 1 events

2.1.4 Events

	ccd 0	ccd 1	ccd 2	ccd 3	ccd 6	ccd 7		ccd 0	ccd 1	ccd 2	ccd 3	ccd 6	ccd 7
level 1 events	162151	161180	168174	167652	169353	196688	grade 0 events	50046	49845	52271	51870	50750	25384
rejected events	68930	67225	73952	73345	72658	67329		30%	30%	31%	30%	29%	12%
rejected %	42%	41%	43%	43%	42%	34%	grade 1 events	342	304	400	394	322	156
								0%	0%	0%	0%	0%	0%
							grade 2 events	16824	17125	15789	16299	17053	27966
								10%	10%	9%	9%	10%	14%
							grade 3 events	6130	6258	6230	6321	6382	12118
								3%	3%	3%	3%	3%	6%
							grade 4 events	6139	6296	6358	6375	6304	11966
								3%	3%	3%	3%	3%	6%
							grade 5 events	3925	4181	3629	4402	4419	10973
								2%	2%	2%	2%	2%	5%
							grade 6 events	14082	14431	13574	13442	16206	51925
								8%	8%	8%	8%	9%	26%
							grade 7 events	64663	62740	69923	68549	67917	56200
								39%	38%	41%	40%	40%	28%

2.2 Compared Parameters

Parameter	Planned	Actual
Instrument	ACIS	ACIS
Detector	ACIS-012367	ACIS-012367
Grating	NONE	NONE
Data mode	FAINT	FAINT
Observation mode	SECONDARY	SECONDARY
[deg] Pointing RA	0	283.0054157569128
[deg] Pointing Dec	0	-4.02822270686482
[deg] Pointing Roll	0.0	247.890573010916
[mm] SIM focus pos	-1.429586	-0.6828225247311905
[mm] SIM defocus	0.1037507710433287	0.8505141146731063
[mm] SIM translation stage pos	250.455976	250.4635187648994
[mm] SIM translation stage offset	0	-0.007540371344731511
[s] Observation start time (MET)	334509913.43987	334509912.41487
Observation start date	2008-08-07T15:25:13	2008-08-07T15:25:12
[s] Observation end time (MET)	334521030.590415	334521029.56542
Observation end date	2008-08-07T18:30:31	2008-08-07T18:30:29
Read mode	TIMED	TIMED

Parameter	Planned	Actual
Obspar format version number	7	7
Obspar file type	PREDICTED	ACTUAL
Obspar update status	NONE	UPDATED
On-chip summing requested	N	N
Subarray requested	NONE	NONE
Alternating exposures requested	N	N
[s] Primary exposure time	3.2	3.2

2.3 Star Slots

2.4 FID Slots

A Summary

A.1 Status

V&V Scientist	Beth Sundheim
V&V Date (YYYY-MM-DD)	2012.05.29
V&V Edition	1
V&V Disposition and Status	OK
V&V Charge Time	8.2741017786264

A.2 Comments