

V&V Reference Report

L2 ASCDS Version : 8.4.4

Observation 57590 - L2 Version 2
Chandra X-Ray Center

L2 Processing Date : May 21 2012

Contents

1	Front	2
2	OBI	3
2.1	OBI	3
2.1.1	Images	3
2.1.2	Bias	3
2.1.3	Parameters	4
2.1.4	Events	4
2.2	Compared Parameters	5
2.3	Star Slots	6
2.4	FID Slots	6
A	Summary	7
A.1	Status	7
A.2	Comments	7

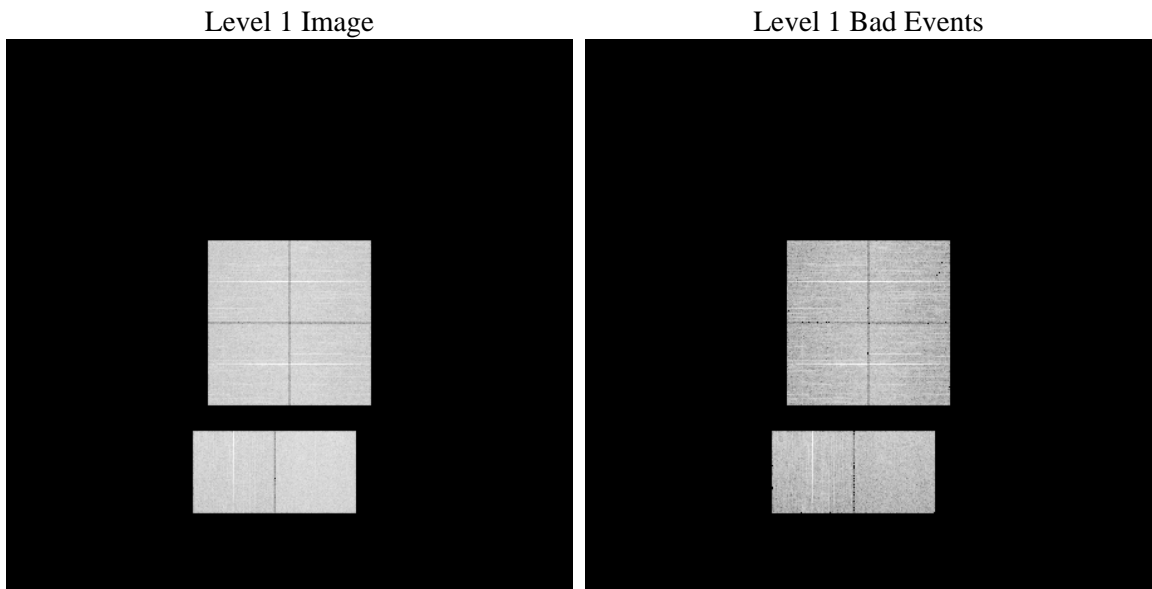
1 Front

seq_num	 	Sequence number
obs_id	57590	Observation id
title	ACIS-012367 diagnostics	Proposal title
observer	CHANDRA engineering request/realtime commanding	Principal investig
object	 	Source name
dtcycle	0	
cycle	P	events from which exps? Prim/Second/Both
ra_targ	0.0	Observer's specified target RA [deg]
dec_targ	0.0	Observer's specified target Dec [deg]
ra_nom	349.98628616211	Nominal RA [deg]
dec_nom	24.974100022194	Nominal Dec [deg]
roll_nom	211.51089476853	Nominal Roll [deg]
revision	2	Processing version of data
ontime	6969.5999740958	Sum of GTIs [s]
livetime	6881.3467026345	Livetime [s]
ontime0	6969.5999740958	Sum of GTIs [s]
ontime1	6969.5999740958	Sum of GTIs [s]
ontime2	6969.5999740958	Sum of GTIs [s]
ontime3	6969.5999740958	Sum of GTIs [s]
ontime6	6969.5999740958	Sum of GTIs [s]
ontime7	6969.5999740958	Sum of GTIs [s]
l2events	465931	Number of level 2 events

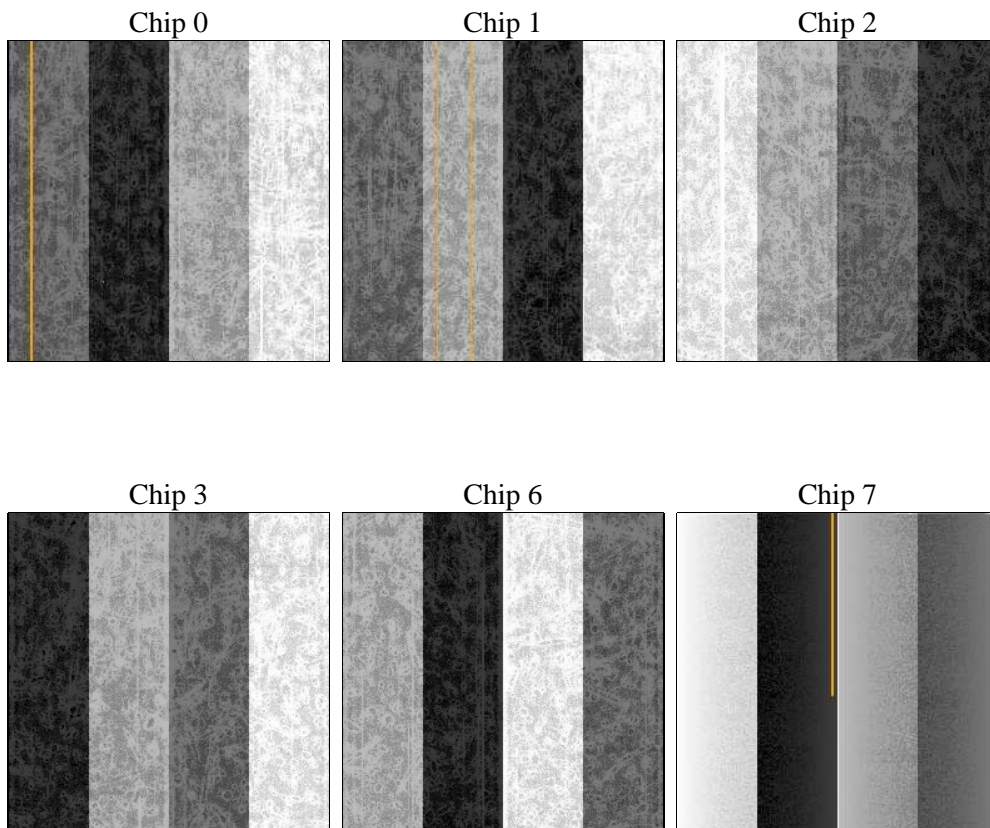
2 OBI

2.1 OBI

2.1.1 Images



2.1.2 Bias



2.1.3 Parameters

obi_num	0	Obi number	sched_exp_time	0.0	[s] Scheduled observation exposure time
ascdsver	8.4.4	Processing system revision	ontime	6969.5999740958	Sum of GTIs [s]
caldsver	4.4.9	 	ontime0	6969.5999740958	Sum of GTIs [s]
date	2012-05-21T23:12:49	Date and time of file creation	ontime1	6969.5999740958	Sum of GTIs [s]
revision	2	Processing version of data	ontime2	6969.5999740958	Sum of GTIs [s]
			ontime3	6969.5999740958	Sum of GTIs [s]
			ontime6	6969.5999740958	Sum of GTIs [s]
			ontime7	6969.5999740958	Sum of GTIs [s]
			l1events	866760	Number of level 1 events

2.1.4 Events

	ccd 0	ccd 1	ccd 2	ccd 3	ccd 6	ccd 7		ccd 0	ccd 1	ccd 2	ccd 3	ccd 6	ccd 7
level 1 events	137683	138334	139647	140744	143950	166402	grade 0 events	41298	41168	42208	42333	42153	20873
rejected events	61696	61584	63186	64173	64633	59542		29%	29%	30%	30%	29%	12%
rejected %	44%	44%	45%	45%	44%	35%	grade 1 events	304	290	349	342	263	155
								0%	0%	0%	0%	0%	0%
							grade 2 events	13911	14419	13230	13491	14256	23448
								10%	10%	9%	9%	9%	14%
							grade 3 events	5215	5090	5270	5292	5380	10173
								3%	3%	3%	3%	3%	6%
							grade 4 events	5038	5118	5319	5306	5289	10152
								3%	3%	3%	3%	3%	6%
							grade 5 events	3455	3597	3146	3839	3670	9532
								2%	2%	2%	2%	2%	5%
							grade 6 events	11438	11853	11339	11081	13206	43535
								8%	8%	8%	7%	9%	26%
							grade 7 events	57024	56799	58786	59060	59733	48534
								41%	41%	42%	41%	41%	29%

2.2 Compared Parameters

Parameter	Planned	Actual	Parameter	Planned	Actual
Instrument	ACIS	ACIS	Obspar format version number	7	7
Detector	ACIS-012367	ACIS-012367	Obspar file type	PREDICTED	ACTUAL
Grating	NONE	NONE	Obspar update status	NONE	UPDATED
Data mode	FAINT	FAINT	Number of optional ACIS chips dropped	0	0
Observation mode	SECONDARY	SECONDARY	On-chip summing requested	N	N
[deg] Pointing RA	0	349.9862861621103	Subarray requested	NONE	NONE
[deg] Pointing Dec	0	24.9741000221939	Alternating exposures requested	N	N
[deg] Pointing Roll	0.0	211.5108947685311	[s] Primary exposure time	3.2	3.2
[mm] SIM focus pos	-1.429586	-0.7809083437167272			
[mm] SIM defocus	0.1037507710433287	0.7524282956875696			
[mm] SIM translation stage pos	250.455976	250.466033080201			
[mm] SIM translation stage offset	0	-0.01005468664627074			
[s] Observation start time (MET)	338843602.662526	338843601.63753			
Observation start date	2008-09-26T19:13:23	2008-09-26T19:13:21			
[s] Observation end time (MET)	338864371.213548	338864370.18855			
Observation end date	2008-09-27T00:59:31	2008-09-27T00:59:30			
Read mode	TIMED	TIMED			

2.3 Star Slots

2.4 FID Slots

A Summary

A.1 Status

V&V Scientist	Beth Sundheim
V&V Date (YYYY-MM-DD)	2012.05.31
V&V Edition	1
V&V Disposition and Status	OK
V&V Charge Time	6.9695999740958

A.2 Comments