

V&V Reference Report

L2 ASCDS Version : 8.4.4

Observation 57545 - L2 Version 2
Chandra X-Ray Center

L2 Processing Date : May 25 2012

Contents

1	Front	2
2	OBI	3
2.1	OBI	3
2.1.1	Images	3
2.1.2	Bias	3
2.1.3	Parameters	4
2.1.4	Events	4
2.2	Compared Parameters	5
2.3	Star Slots	6
2.4	FID Slots	6
A	Summary	7
A.1	Status	7
A.2	Comments	7

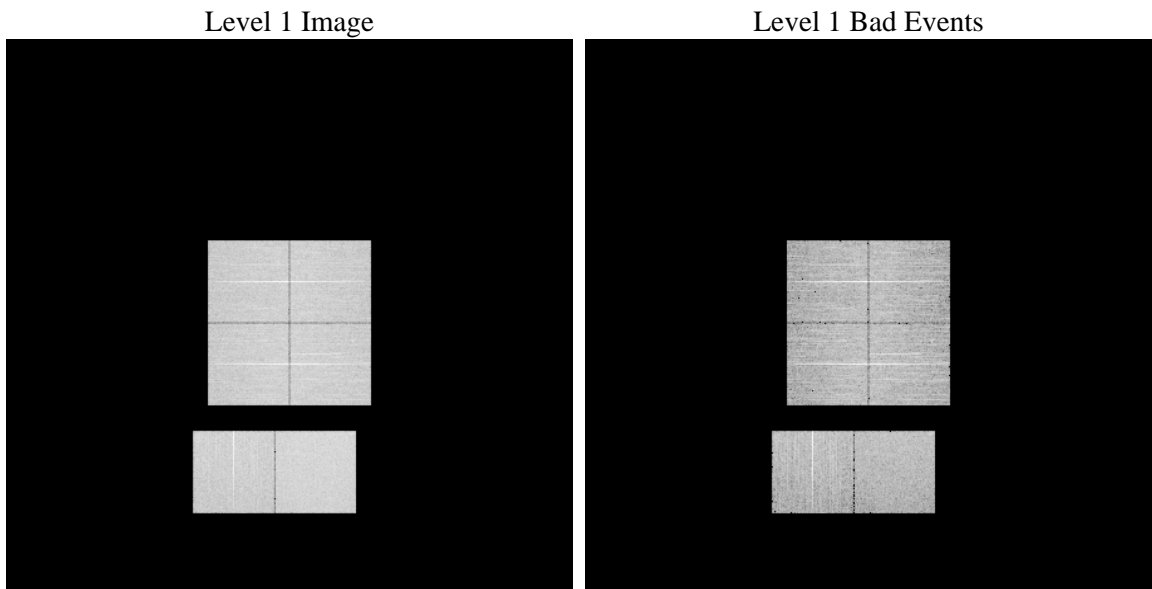
1 Front

seq_num	 	Sequence number
obs_id	57545	Observation id
title	ACIS-012367 diagnostics	Proposal title
observer	CHANDRA engineering request/realtime commanding	Principal investig
object	 	Source name
dtcycle	0	
cycle	P	events from which exps? Prim/Second/Both
ra_targ	0.0	Observer's specified target RA [deg]
dec_targ	0.0	Observer's specified target Dec [deg]
ra_nom	33.016503478735	Nominal RA [deg]
dec_nom	-1.9764772406645	Nominal Dec [deg]
roll_nom	22.019313474822	Nominal Roll [deg]
revision	2	Processing version of data
ontime	7195.0335150957	Sum of GTIs [s]
livetime	7103.9256683985	Livetime [s]
ontime0	7195.0334951878	Sum of GTIs [s]
ontime1	7195.0334951878	Sum of GTIs [s]
ontime2	7195.4191606045	Sum of GTIs [s]
ontime3	7195.0334951878	Sum of GTIs [s]
ontime6	7195.3781206012	Sum of GTIs [s]
ontime7	7195.0335150957	Sum of GTIs [s]
l2events	475807	Number of level 2 events

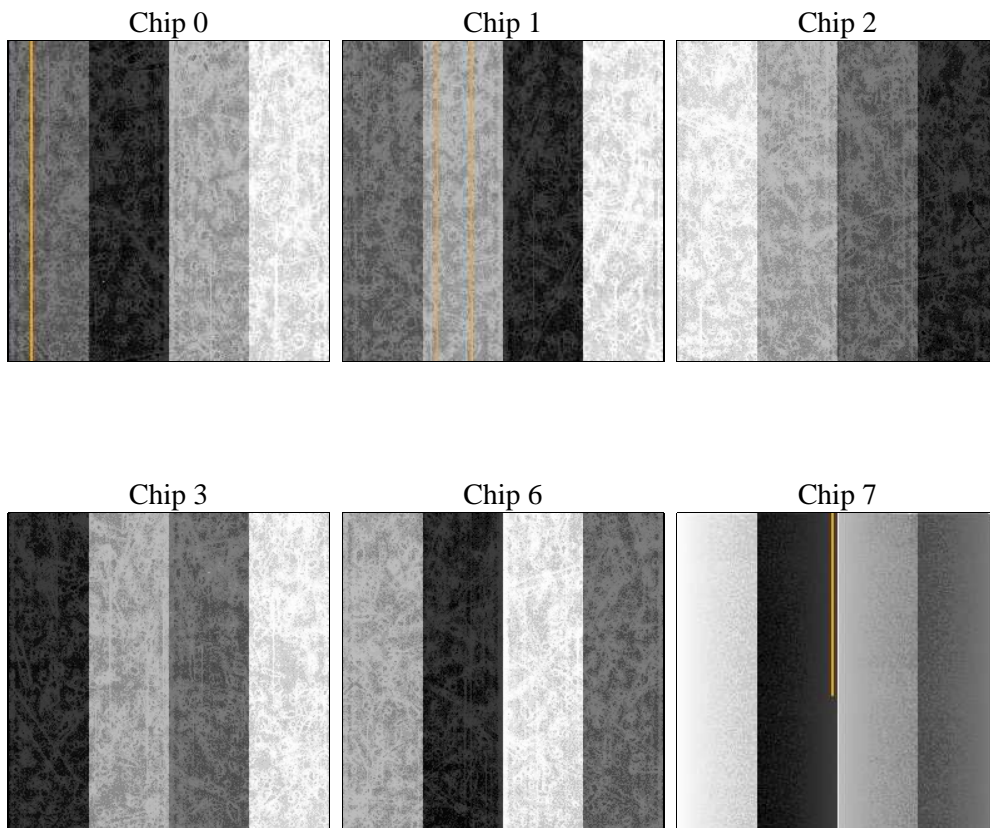
2 OBI

2.1 OBI

2.1.1 Images



2.1.2 Bias



2.1.3 Parameters

obi_num	1	Obi number	sched_exp_time	0.0	[s] Scheduled observation exposure time
ascdsver	8.4.4	Processing system revision	ontime	7195.0335150957	Sum of GTIs [s]
caldsver	4.4.9	 	ontime0	7195.0334951878	Sum of GTIs [s]
date	2012-05-25T04:30:06	Date and time of file creation	ontime1	7195.0334951878	Sum of GTIs [s]
revision	2	Processing version of data	ontime2	7195.4191606045	Sum of GTIs [s]
			ontime3	7195.0334951878	Sum of GTIs [s]
			ontime6	7195.3781206012	Sum of GTIs [s]
			ontime7	7195.0335150957	Sum of GTIs [s]
			l1events	875856	Number of level 1 events

2.1.4 Events

	ccd 0	ccd 1	ccd 2	ccd 3	ccd 6	ccd 7		ccd 0	ccd 1	ccd 2	ccd 3	ccd 6	ccd 7
level 1 events	137407	138200	141691	145713	144168	168677	grade 0 events	41580	40995	42622	42809	42627	21577
rejected events	60016	60399	63767	67162	63264	58640		30%	29%	30%	29%	29%	12%
rejected %	43%	43%	45%	46%	43%	34%	grade 1 events	326	254	330	339	247	122
								0%	0%	0%	0%	0%	0%
							grade 2 events	13936	14324	13444	13787	14597	23914
								10%	10%	9%	9%	10%	14%
							grade 3 events	5169	5162	5258	5270	5174	10559
								3%	3%	3%	3%	3%	6%
							grade 4 events	5063	5238	5278	5257	5210	10351
								3%	3%	3%	3%	3%	6%
							grade 5 events	3373	3588	3281	3883	3851	9808
								2%	2%	2%	2%	2%	5%
							grade 6 events	11643	12082	11353	11428	13331	43636
								8%	8%	8%	7%	9%	25%
							grade 7 events	56317	56557	60125	62940	59131	48710
								40%	40%	42%	43%	41%	28%

2.2 Compared Parameters

Parameter	Planned	Actual	Parameter	Planned	Actual
Instrument	ACIS	ACIS	Obspar format version number	7	7
Detector	ACIS-012367	ACIS-012367	Obspar file type	PREDICTED	ACTUAL
Grating	NONE	NONE	Obspar update status	NONE	UPDATED
Data mode	FAINT	FAINT	Number of optional ACIS chips dropped	0	0
Observation mode	SECONDARY	SECONDARY	On-chip summing requested	N	N
[deg] Pointing RA	0	33.01650347873525	Subarray requested	NONE	NONE
[deg] Pointing Dec	0	-1.976477240664465	Alternating exposures requested	N	N
[deg] Pointing Roll	0.0	22.01931347482202	[s] Primary exposure time	3.2	3.2
[mm] SIM focus pos	-1.429586	-0.6828225247311905			
[mm] SIM defocus	0.1037507710433287	0.8505141146731063			
[mm] SIM translation stage pos	250.455976	250.466033080201			
[mm] SIM translation stage offset	0	-0.01005468664627074			
[s] Observation start time (MET)	341090400.723178	341090399.69818			
Observation start date	2008-10-22T19:20:01	2008-10-22T19:19:59			
[s] Observation end time (MET)	341111472.674217	341111471.64922			
Observation end date	2008-10-23T01:11:13	2008-10-23T01:11:11			
Read mode	TIMED	TIMED			

2.3 Star Slots

2.4 FID Slots

A Summary

A.1 Status

V&V Scientist	Beth Sundheim
V&V Date (YYYY-MM-DD)	2012.05.31
V&V Edition	1
V&V Disposition and Status	OK
V&V Charge Time	7.1950335150957

A.2 Comments