

V&V Reference Report

L2 ASCDS Version : 8.4.4

Observation 57473 - L2 Version 2
Chandra X-Ray Center

L2 Processing Date : May 24 2012

Contents

1	Front	2
2	OBI	3
2.1	OBI	3
2.1.1	Images	3
2.1.2	Bias	3
2.1.3	Parameters	4
2.1.4	Events	4
2.2	Compared Parameters	5
2.3	Star Slots	6
2.4	FID Slots	6
A	Summary	7
A.1	Status	7
A.2	Comments	7

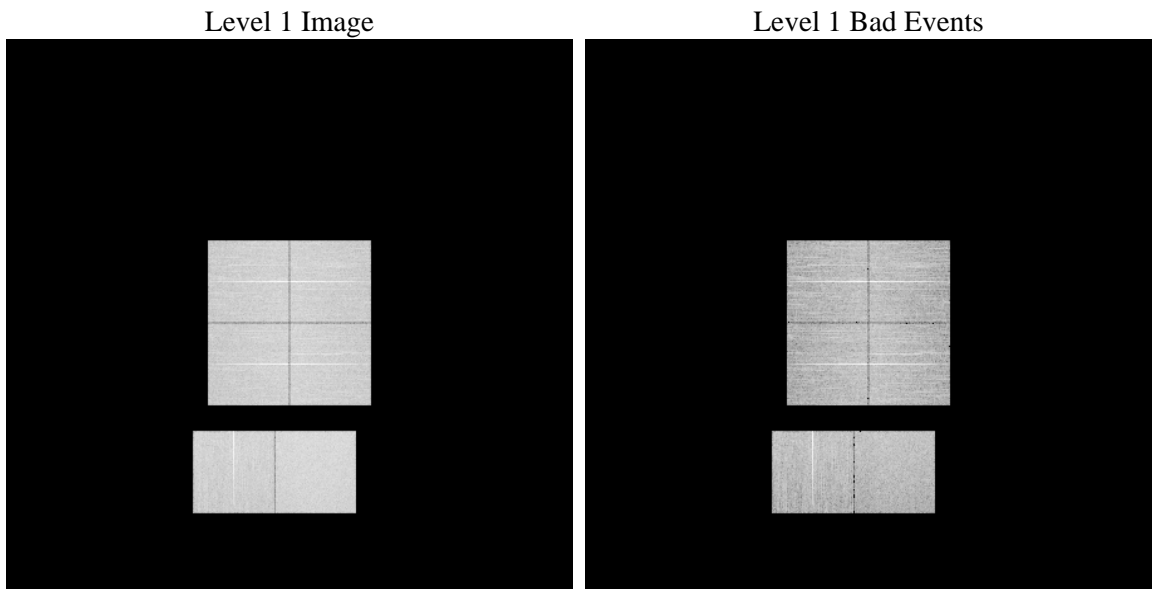
1 Front

seq_num	 	Sequence number
obs_id	57473	Observation id
title	ACIS-012367 diagnostics	Proposal title
observer	CHANDRA engineering request/realtime commanding	Principal investig
object	 	Source name
dtcycle	0	
cycle	P	events from which exps? Prim/Second/Both
ra_targ	0.0	Observer's specified target RA [deg]
dec_targ	0.0	Observer's specified target Dec [deg]
ra_nom	82.962486221182	Nominal RA [deg]
dec_nom	41.004818356739	Nominal Dec [deg]
roll_nom	137.47659073592	Nominal Roll [deg]
revision	2	Processing version of data
ontime	8195.1999695301	Sum of GTIs [s]
livetime	8091.4274129589	Livetime [s]
ontime0	8195.1999695301	Sum of GTIs [s]
ontime1	8195.1902619004	Sum of GTIs [s]
ontime2	8195.1492218971	Sum of GTIs [s]
ontime3	8195.1999695301	Sum of GTIs [s]
ontime6	8195.1081818938	Sum of GTIs [s]
ontime7	8195.1999695301	Sum of GTIs [s]
l2events	527567	Number of level 2 events

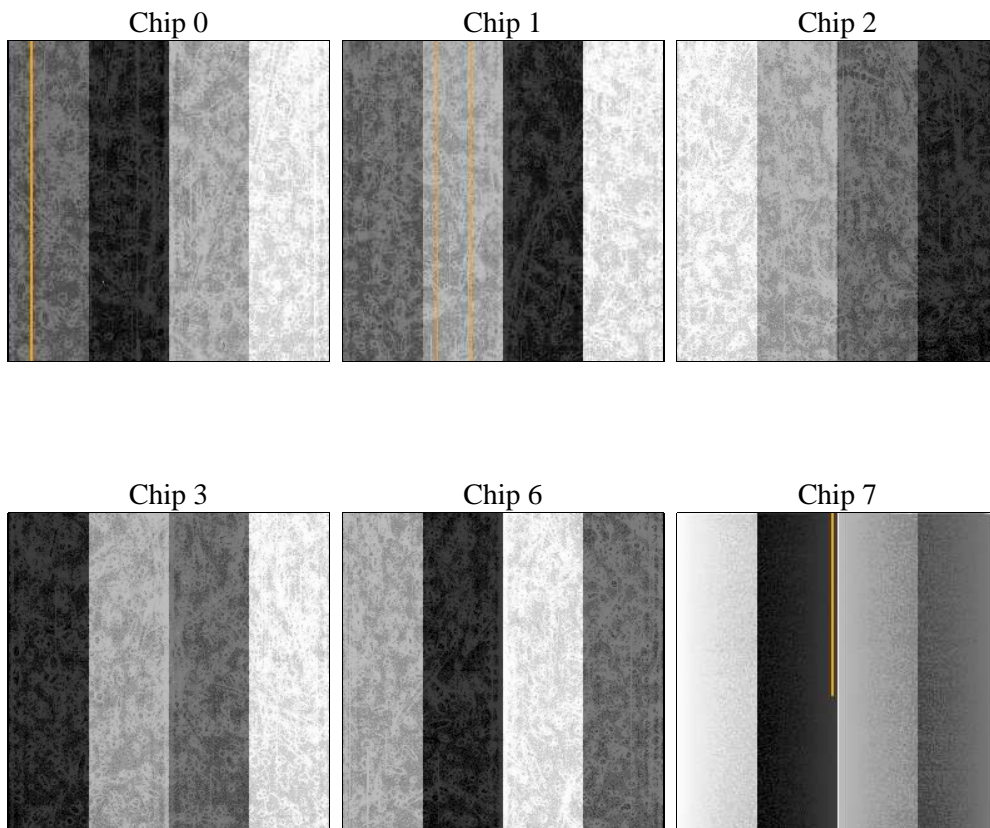
2 OBI

2.1 OBI

2.1.1 Images



2.1.2 Bias



2.1.3 Parameters

obi_num	0	Obi number	sched_exp_time	0.0	[s] Scheduled observation exposure time
ascdsver	8.4.4	Processing system revision	ontime	8195.1999695301	Sum of GTIs [s]
caldsver	4.4.9	 	ontime0	8195.1999695301	Sum of GTIs [s]
date	2012-05-24T19:30:47	Date and time of file creation	ontime1	8195.1902619004	Sum of GTIs [s]
revision	2	Processing version of data	ontime2	8195.1492218971	Sum of GTIs [s]
			ontime3	8195.1999695301	Sum of GTIs [s]
			ontime6	8195.1081818938	Sum of GTIs [s]
			ontime7	8195.1999695301	Sum of GTIs [s]
			l1events	993591	Number of level 1 events

2.1.4 Events

	ccd 0	ccd 1	ccd 2	ccd 3	ccd 6	ccd 7		ccd 0	ccd 1	ccd 2	ccd 3	ccd 6	ccd 7
level 1 events	157939	157450	157478	162692	165089	192943	grade 0 events	46491	46404	47463	47645	47363	23748
rejected events	71893	70542	71472	76513	75957	70002		29%	29%	30%	29%	28%	12%
rejected %	45%	44%	45%	47%	46%	36%	grade 1 events	363	293	356	368	308	174
								0%	0%	0%	0%	0%	0%
							grade 2 events	15670	16134	15029	15016	15850	26930
								9%	10%	9%	9%	9%	13%
							grade 3 events	5994	5806	5881	5922	5686	11892
								3%	3%	3%	3%	3%	6%
							grade 4 events	5777	5842	5844	5975	5921	11368
								3%	3%	3%	3%	3%	5%
							grade 5 events	3930	4171	3773	4373	4287	11307
								2%	2%	2%	2%	2%	5%
							grade 6 events	12982	13590	12635	12455	15174	50177
								8%	8%	8%	7%	9%	26%
							grade 7 events	66732	65210	66497	70938	70500	57347
								42%	41%	42%	43%	42%	29%

2.2 Compared Parameters

Parameter	Planned	Actual	Parameter	Planned	Actual
Instrument	ACIS	ACIS	Obspar format version number	7	7
Detector	ACIS-012367	ACIS-012367	Obspar file type	PREDICTED	ACTUAL
Grating	NONE	NONE	Obspar update status	NONE	UPDATED
Data mode	FAINT	FAINT	Number of optional ACIS chips dropped	0	0
Observation mode	SECONDARY	SECONDARY	On-chip summing requested	N	N
[deg] Pointing RA	0	82.96248622118242	Subarray requested	NONE	NONE
[deg] Pointing Dec	0	41.00481835673887	Alternating exposures requested	N	N
[deg] Pointing Roll	0.0	137.4765907359184	[s] Primary exposure time	3.2	3.2
[mm] SIM focus pos	-1.429586	-0.7809083437167272			
[mm] SIM defocus	0.1037507710433287	0.7524282956875696			
[mm] SIM translation stage pos	250.455976	250.466033080201			
[mm] SIM translation stage offset	0	-0.01005468664627074			
[s] Observation start time (MET)	344322598.982633	344322597.95764			
Observation start date	2008-11-29T05:09:59	2008-11-29T05:09:57			
[s] Observation end time (MET)	344344765.633727	344344764.60873			
Observation end date	2008-11-29T11:19:26	2008-11-29T11:19:24			
Read mode	TIMED	TIMED			

2.3 Star Slots

2.4 FID Slots

A Summary

A.1 Status

V&V Scientist	Beth Sundheim
V&V Date (YYYY-MM-DD)	2012.05.31
V&V Edition	1
V&V Disposition and Status	OK
V&V Charge Time	8.1951999695301

A.2 Comments