

V&V Reference Report

L2 ASCDS Version : 8.4.4

Observation 57418 - L2 Version 2
Chandra X-Ray Center

L2 Processing Date : May 29 2012

Contents

1	Front	2
2	OBI	3
2.1	OBI	3
2.1.1	Images	3
2.1.2	Bias	3
2.1.3	Parameters	4
2.1.4	Events	4
2.2	Compared Parameters	5
2.3	Star Slots	6
2.4	FID Slots	6
A	Summary	7
A.1	Status	7
A.2	Comments	7

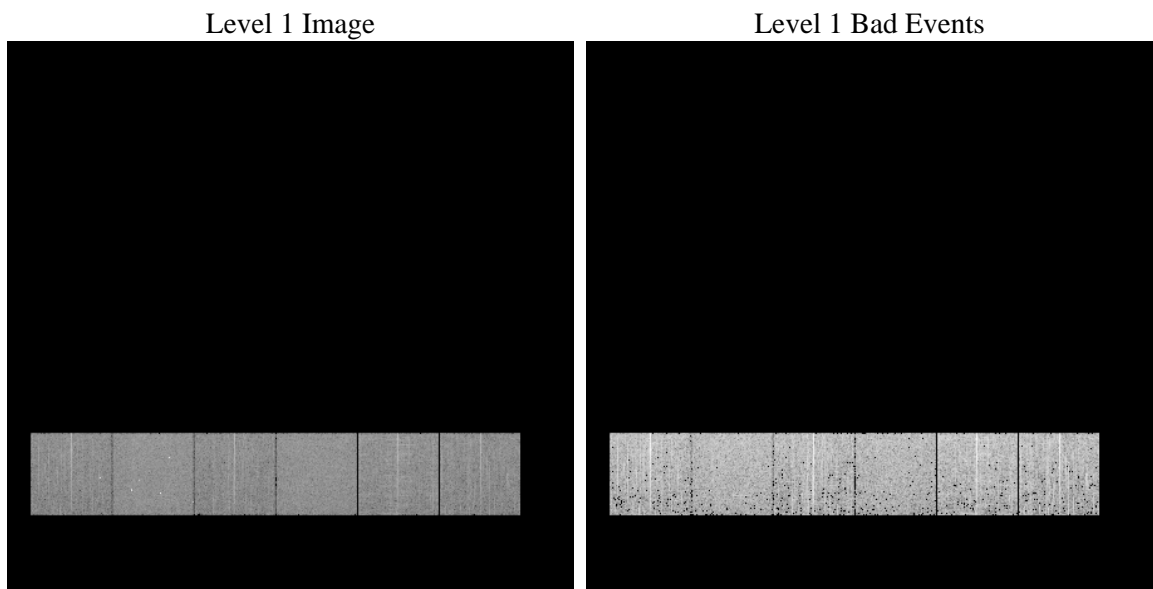
1 Front

seq_num	 	Sequence number
obs_id	57418	Observation id
title	ACIS-456789 diagnostics	Proposal title
observer	CHANDRA engineering request/realtime commanding	Principal investig
object	 	Source name
dtcycle	0	
cycle	P	events from which exps? Prim/Second/Both
ra_targ	0.0	Observer's specified target RA [deg]
dec_targ	0.0	Observer's specified target Dec [deg]
ra_nom	98.525033747793	Nominal RA [deg]
dec_nom	-0.98577329899071	Nominal Dec [deg]
roll_nom	356.74862708929	Nominal Roll [deg]
revision	2	Processing version of data
ontime	2792.419031024	Sum of GTIs [s]
livetime	2757.0597398603	Livetime [s]
ontime4	2792.2959110141	Sum of GTIs [s]
ontime5	2792.3779910207	Sum of GTIs [s]
ontime6	2792.3369510174	Sum of GTIs [s]
ontime7	2792.419031024	Sum of GTIs [s]
ontime8	2792.2548710108	Sum of GTIs [s]
ontime9	2792.4600710273	Sum of GTIs [s]
l2events	188962	Number of level 2 events

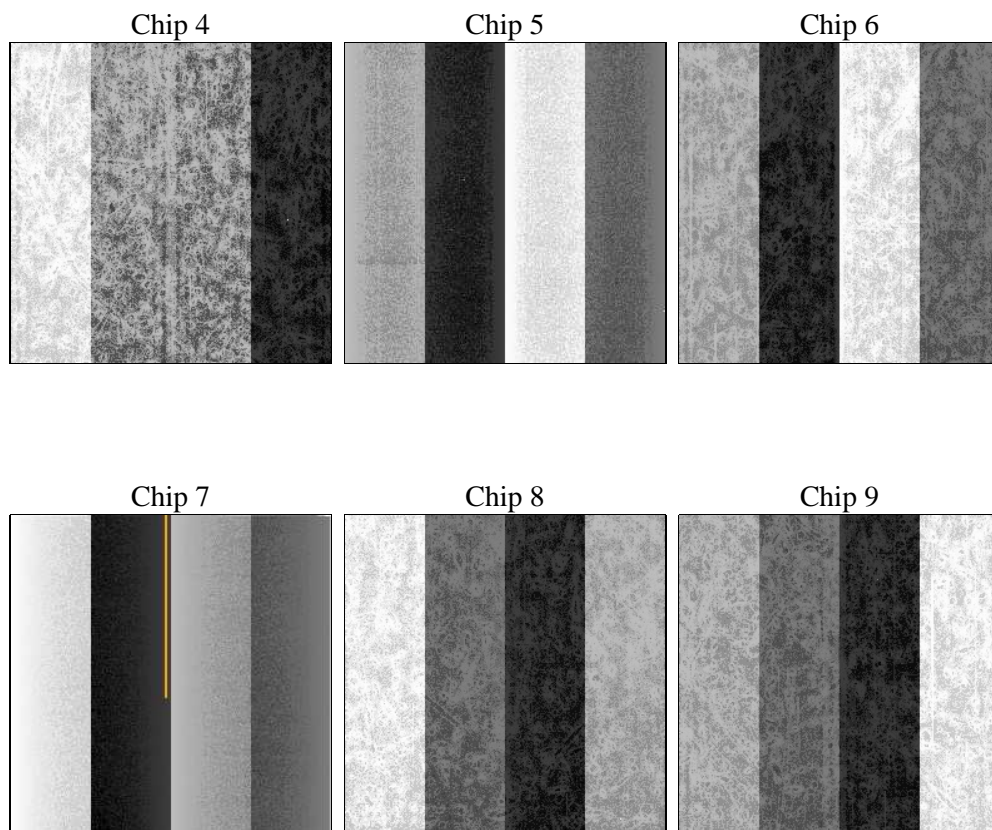
2 OBI

2.1 OBI

2.1.1 Images



2.1.2 Bias



2.1.3 Parameters

obi_num	0	Obi number	sched_exp_time	0.0	[s] Scheduled observation exposure time
ascdsver	8.4.4	Processing system revision	ontime	2792.419031024	Sum of GTIs [s]
caldbver	4.4.9	 	ontime4	2792.2959110141	Sum of GTIs [s]
date	2012-05-29T20:39:16	Date and time of file creation	ontime5	2792.3779910207	Sum of GTIs [s]
revision	2	Processing version of data	ontime6	2792.3369510174	Sum of GTIs [s]
			ontime7	2792.419031024	Sum of GTIs [s]
			ontime8	2792.2548710108	Sum of GTIs [s]
			ontime9	2792.4600710273	Sum of GTIs [s]
			l1events	369671	Number of level 1 events

2.1.4 Events

	ccd 4	ccd 5	ccd 6	ccd 7	ccd 8	ccd 9		ccd 4	ccd 5	ccd 6	ccd 7	ccd 8	ccd 9
level 1 events	56854	68243	57288	65639	64677	56970	grade 0 events	16132	7604	15805	7932	17291	15533
rejected events	28366	25428	27246	23941	29962	27930		28%	11%	27%	12%	26%	27%
rejected %	49%	37%	47%	36%	46%	49%	grade 1 events	175	115	114	56	104	116
								0%	0%	0%	0%	0%	0%
							grade 2 events	4601	15009	5255	9068	6504	4979
								8%	21%	9%	13%	10%	8%
							grade 3 events	1993	2022	1972	4096	2540	1988
								3%	2%	3%	6%	3%	3%
							grade 4 events	2038	1979	1952	3794	2520	1963
								3%	2%	3%	5%	3%	3%
							grade 5 events	1517	3454	1573	4012	1955	1676
								2%	5%	2%	6%	3%	2%
							grade 6 events	3724	16201	5058	16808	5860	4577
								6%	23%	8%	25%	9%	8%
							grade 7 events	26674	21859	25559	19873	27903	26138
								46%	32%	44%	30%	43%	45%

2.2 Compared Parameters

Parameter	Planned	Actual	Parameter	Planned	Actual
Instrument	ACIS	ACIS	Obspar format version number	7	7
Detector	ACIS-456789	ACIS-456789	Obspar file type	PREDICTED	ACTUAL
Grating	NONE	NONE	Obspar update status	NONE	UPDATED
Data mode	FAINT	FAINT	Number of optional ACIS chips dropped	0	0
Observation mode	SECONDARY	SECONDARY	On-chip summing requested	N	N
[deg] Pointing RA	0	98.52503374779337	Subarray requested	NONE	NONE
[deg] Pointing Dec	0	-0.9857732989907132	Alternating exposures requested	N	N
[deg] Pointing Roll	0.0	356.7486270892884	[s] Primary exposure time	3.2	3.2
[mm] SIM focus pos	-1.429586	-0.6828225247311905			
[mm] SIM defocus	0.1037507710433287	0.8505141146731063			
[mm] SIM translation stage pos	250.455976	250.466033080201			
[mm] SIM translation stage offset	0	-0.01005468664627074			
[s] Observation start time (MET)	347034685.566727	347034684.54173			
Observation start date	2008-12-30T14:31:26	2008-12-30T14:31:24			
[s] Observation end time (MET)	347043967.967186	347043966.94219			
Observation end date	2008-12-30T17:06:08	2008-12-30T17:06:06			
Read mode	TIMED	TIMED			

2.3 Star Slots

2.4 FID Slots

A Summary

A.1 Status

V&V Scientist	Beth Sundheim
V&V Date (YYYY-MM-DD)	2012.06.04
V&V Edition	1
V&V Disposition and Status	OK
V&V Charge Time	2.792419031024

A.2 Comments