

# V&V Reference Report

## L2 ASCDS Version : 8.4.4

Observation 58571 - L2 Version 2  
Chandra X-Ray Center

L2 Processing Date : Apr 18 2012

## Contents

<b>1</b>	<b>Front</b>	<b>2</b>
<b>2</b>	<b>OBI</b>	<b>3</b>
2.1	OBI . . . . .	3
2.1.1	Images . . . . .	3
2.1.2	Bias . . . . .	3
2.1.3	Parameters . . . . .	4
2.1.4	Events . . . . .	4
2.2	Compared Parameters . . . . .	5
2.3	Star Slots . . . . .	6
2.4	FID Slots . . . . .	6
<b>A</b>	<b>Summary</b>	<b>7</b>
A.1	Status . . . . .	7
A.2	Comments . . . . .	7

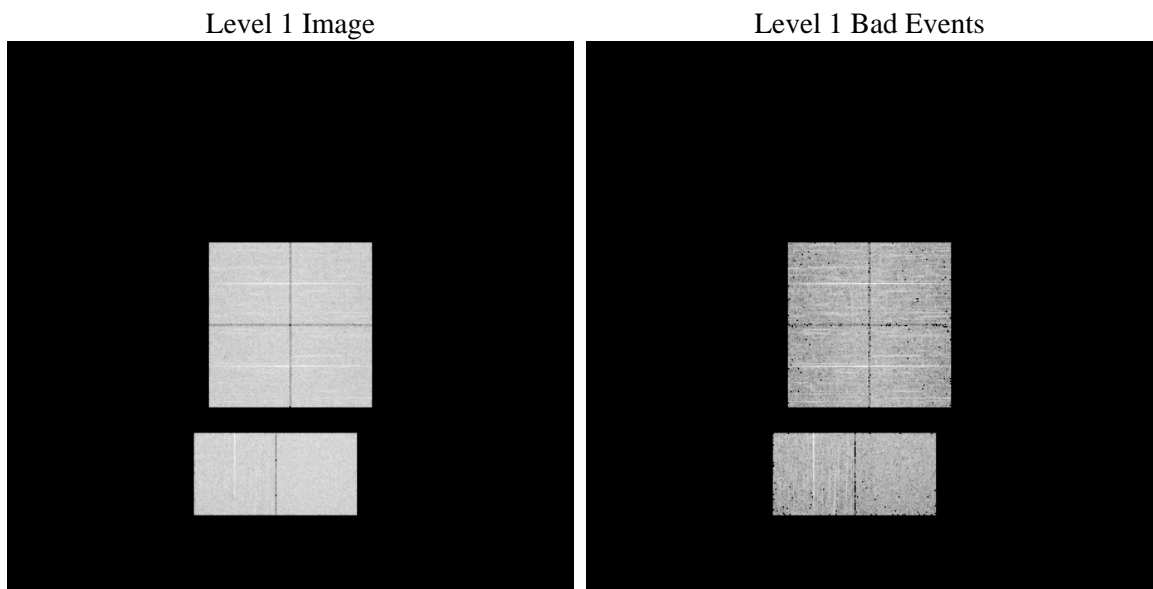
# 1 Front

seq_num	&#160	Sequence number
obs_id	58571	Observation id
title	ACIS-012367 diagnostics	Proposal title
observer	CHANDRA engineering request/realtime commanding	Principal investig
object	&#160	Source name
dtcycle	0	&#160
cycle	P	events from which exps? Prim/Second/Both
ra_targ	0.0	Observer's specified target RA [deg]
dec_targ	0.0	Observer's specified target Dec [deg]
ra_nom	113.35405734221	Nominal RA [deg]
dec_nom	48.479441822356	Nominal Dec [deg]
roll_nom	189.27319191796	Nominal Roll [deg]
revision	2	Processing version of data
ontime	4536.904718101	Sum of GTIs [s]
livetime	4479.4556987644	Livetime [s]
ontime0	4536.8636780977	Sum of GTIs [s]
ontime1	4536.8226380944	Sum of GTIs [s]
ontime2	4536.7815980911	Sum of GTIs [s]
ontime3	4536.9457581043	Sum of GTIs [s]
ontime6	4536.7405580878	Sum of GTIs [s]
ontime7	4536.904718101	Sum of GTIs [s]
l2events	436116	Number of level 2 events

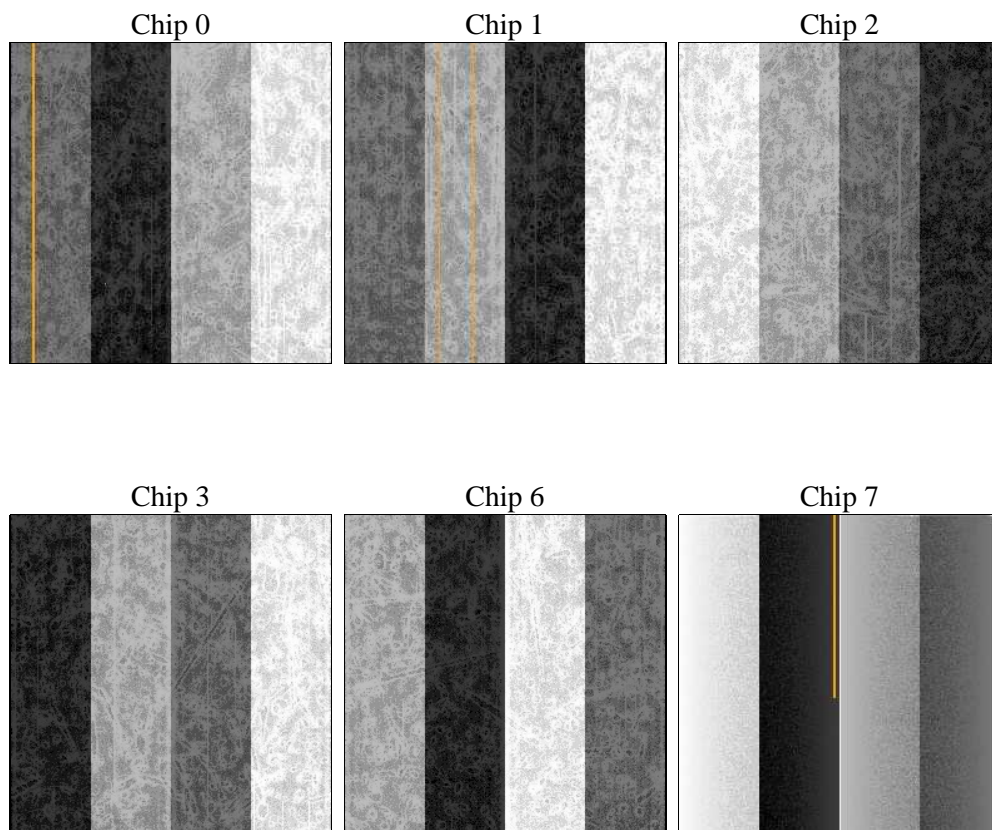
## 2 OBI

### 2.1 OBI

#### 2.1.1 Images



#### 2.1.2 Bias



### 2.1.3 Parameters

obi_num	0	Obi number	sched_exp_time	0.0	[s] Scheduled observation exposure time
ascdsver	8.4.4	Processing system revision	ontime	4536.904718101	Sum of GTIs [s]
caldsver	4.4.9	&#160	ontime0	4536.8636780977	Sum of GTIs [s]
date	2012-04-18T16:41:54	Date and time of file creation	ontime1	4536.8226380944	Sum of GTIs [s]
revision	2	Processing version of data	ontime2	4536.7815980911	Sum of GTIs [s]
			ontime3	4536.9457581043	Sum of GTIs [s]
			ontime6	4536.7405580878	Sum of GTIs [s]
			ontime7	4536.904718101	Sum of GTIs [s]
			l1events	682138	Number of level 1 events

### 2.1.4 Events

	ccd 0	ccd 1	ccd 2	ccd 3	ccd 6	ccd 7		ccd 0	ccd 1	ccd 2	ccd 3	ccd 6	ccd 7
level 1 events	110169	109627	111136	111692	114779	124735	grade 0 events	40008	39090	40660	40720	40488	19851
rejected events	37172	36943	37745	38153	38872	33693		36%	35%	36%	36%	35%	15%
rejected %	33%	33%	33%	34%	33%	27%	grade 1 events	281	226	288	286	254	94
								0%	0%	0%	0%	0%	0%
							grade 2 events	12676	13114	12424	12830	13327	19628
								11%	11%	11%	11%	11%	15%
							grade 3 events	4786	4791	4890	4923	4756	8917
								4%	4%	4%	4%	4%	7%
							grade 4 events	4759	4790	5043	4795	4854	8746
								4%	4%	4%	4%	4%	7%
							grade 5 events	2094	2205	1961	2268	2327	5608
								1%	2%	1%	2%	2%	4%
							grade 6 events	10768	10899	10374	10271	12482	33900
								9%	9%	9%	9%	10%	27%
							grade 7 events	34797	34512	35496	35599	36291	27991
								31%	31%	31%	31%	31%	22%

## 2.2 Compared Parameters

Parameter	Planned	Actual
Instrument	ACIS	ACIS
Detector	ACIS-012367	ACIS-012367
Grating	NONE	NONE
Data mode	FAINT	FAINT
Observation mode	SECONDARY	SECONDARY
[deg] Pointing RA	0	113.3540573422142
[deg] Pointing Dec	0	48.47944182235619
[deg] Pointing Roll	0.0	189.2731919179563
[mm] SIM focus pos	-0.782348	-0.6828225247311905
[mm] SIM defocus	0	0.8505141146731063
[mm] SIM translation stage pos	-233.592463	250.466033080201
[mm] SIM translation stage offset	0	-0.01005468664627074
[s] Observation start time (MET)	285342618.818844	285342617.79385
Observation start date	2007-01-16T13:50:19	2007-01-16T13:50:17
[s] Observation end time (MET)	285357501.81955	285357500.79456
Observation end date	2007-01-16T17:58:22	2007-01-16T17:58:20
Read mode	TIMED	TIMED

Parameter	Planned	Actual
Obspar format version number	7	7
Obspar file type	PREDICTED	ACTUAL
Obspar update status	NONE	UPDATED
On-chip summing requested	N	N
Subarray requested	NONE	NONE
Alternating exposures requested	N	N
[s] Primary exposure time	3.2	3.2

## 2.3 Star Slots

## 2.4 FID Slots

## A Summary

### A.1 Status

V&V Scientist	Jen Lauer
V&V Date (YYYY-MM-DD)	2012.04.19
V&V Edition	1
V&V Disposition and Status	OK
V&V Charge Time	4.536904718101

### A.2 Comments