

V&V Reference Report

L2 ASCDS Version : 8.4.4

Observation 58557 - L2 Version 2
Chandra X-Ray Center

L2 Processing Date : Apr 19 2012

Contents

1	Front	2
2	OBI	3
2.1	OBI	3
2.1.1	Images	3
2.1.2	Bias	3
2.1.3	Parameters	4
2.1.4	Events	4
2.2	Compared Parameters	5
2.3	Star Slots	6
2.4	FID Slots	6
A	Summary	7
A.1	Status	7
A.2	Comments	7

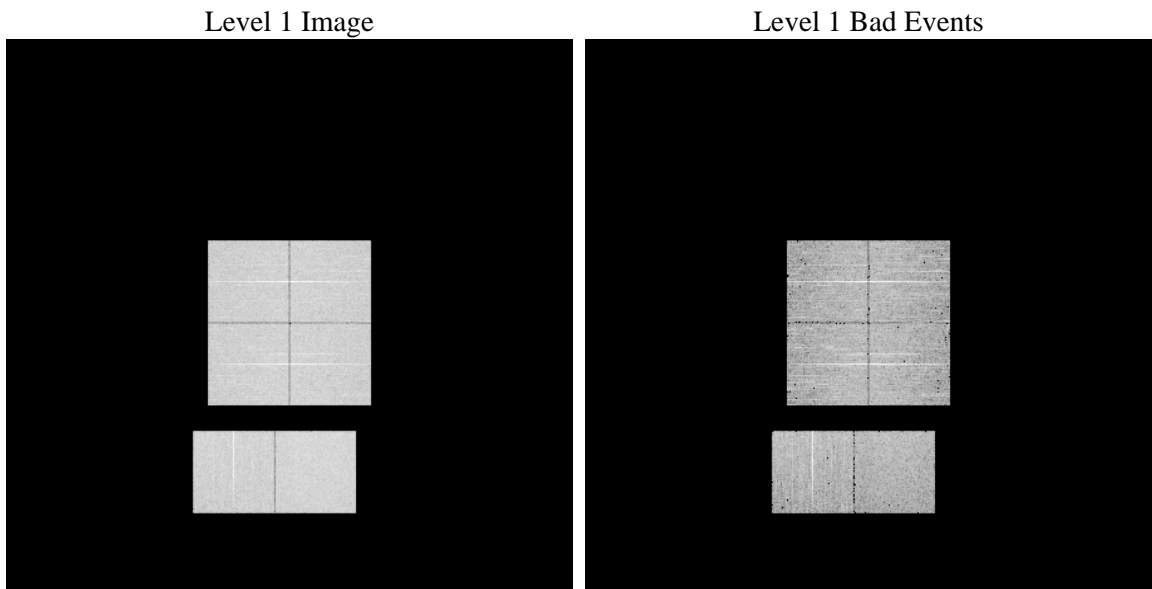
1 Front

seq_num	 	Sequence number
obs_id	58557	Observation id
title	ACIS-012367 diagnostics	Proposal title
observer	CHANDRA engineering request/realtime commanding	Principal investig
object	 	Source name
dtcycle	0	
cycle	P	events from which exps? Prim/Second/Both
ra_targ	0.0	Observer's specified target RA [deg]
dec_targ	0.0	Observer's specified target Dec [deg]
ra_nom	95.022204298436	Nominal RA [deg]
dec_nom	29.971577514084	Nominal Dec [deg]
roll_nom	257.7331338583	Nominal Roll [deg]
revision	2	Processing version of data
ontime	5352.0942096114	Sum of GTIs [s]
livetime	5284.3227700851	Livetime [s]
ontime0	5352.0531696081	Sum of GTIs [s]
ontime1	5352.0121296048	Sum of GTIs [s]
ontime2	5351.9710896015	Sum of GTIs [s]
ontime3	5352.1352496147	Sum of GTIs [s]
ontime6	5351.9300495982	Sum of GTIs [s]
ontime7	5352.0942096114	Sum of GTIs [s]
l2events	513292	Number of level 2 events

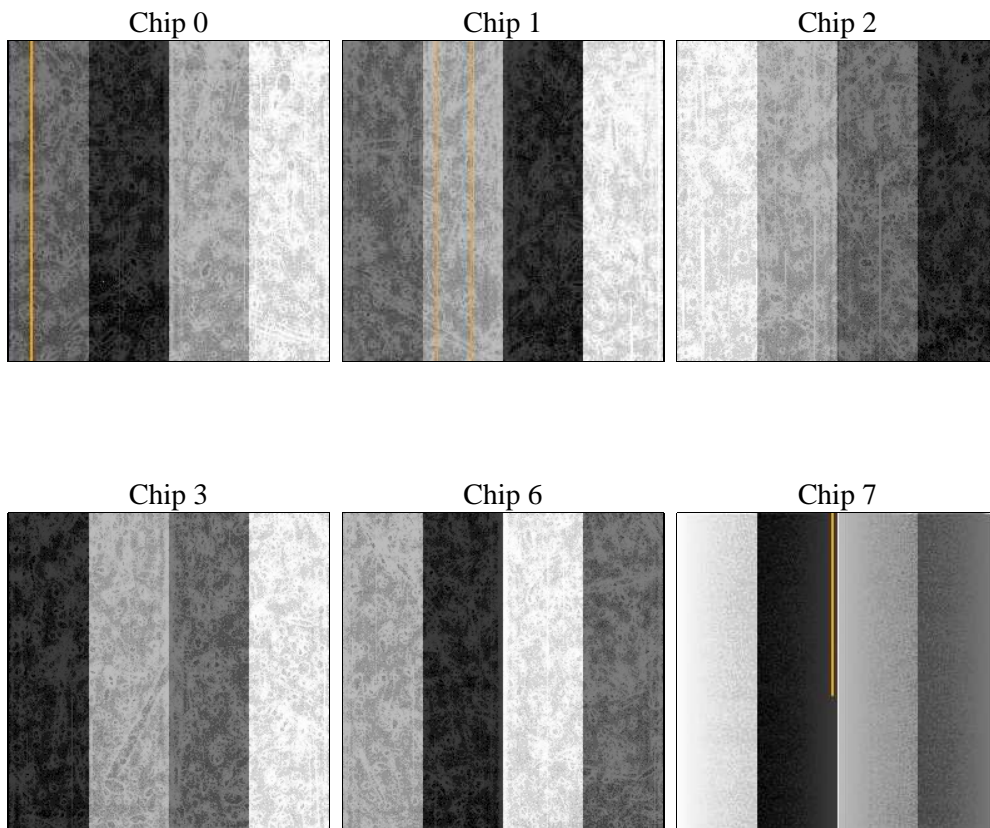
2 OBI

2.1 OBI

2.1.1 Images



2.1.2 Bias



2.1.3 Parameters

obi_num	0	Obi number	sched_exp_time	0.0	[s] Scheduled observation exposure time
ascdsver	8.4.4	Processing system revision	ontime	5352.0942096114	Sum of GTIs [s]
caldsver	4.4.9	 	ontime0	5352.0531696081	Sum of GTIs [s]
date	2012-04-19T04:11:41	Date and time of file creation	ontime1	5352.0121296048	Sum of GTIs [s]
revision	2	Processing version of data	ontime2	5351.9710896015	Sum of GTIs [s]
			ontime3	5352.1352496147	Sum of GTIs [s]
			ontime6	5351.9300495982	Sum of GTIs [s]
			ontime7	5352.0942096114	Sum of GTIs [s]
			l1events	813721	Number of level 1 events

2.1.4 Events

	ccd 0	ccd 1	ccd 2	ccd 3	ccd 6	ccd 7		ccd 0	ccd 1	ccd 2	ccd 3	ccd 6	ccd 7
level 1 events	129833	130686	134677	133210	137032	148283	grade 0 events	46841	46348	47996	48362	47245	22906
rejected events	43913	44502	48274	46833	48221	40890		36%	35%	35%	36%	34%	15%
rejected %	33%	34%	35%	35%	35%	27%	grade 1 events	319	254	345	358	280	101
								0%	0%	0%	0%	0%	0%
							grade 2 events	15028	15887	14644	14737	15623	23641
								11%	12%	10%	11%	11%	15%
							grade 3 events	5606	5504	5773	5562	5686	10228
								4%	4%	4%	4%	4%	6%
							grade 4 events	5569	5498	5751	5704	5511	10152
								4%	4%	4%	4%	4%	6%
							grade 5 events	2494	2544	2432	2768	2714	6863
								1%	1%	1%	2%	1%	4%
							grade 6 events	12929	13007	12290	12064	14803	40528
								9%	9%	9%	9%	10%	27%
							grade 7 events	41047	41644	45446	43655	45170	33864
								31%	31%	33%	32%	32%	22%

2.2 Compared Parameters

Parameter	Planned	Actual	Parameter	Planned	Actual
Instrument	ACIS	ACIS	Obspar format version number	7	7
Detector	ACIS-012367	ACIS-012367	Obspar file type	PREDICTED	ACTUAL
Grating	NONE	NONE	Obspar update status	NONE	UPDATED
Data mode	FAINT	FAINT	On-chip summing requested	N	N
Observation mode	SECONDARY	SECONDARY	Subarray requested	NONE	NONE
[deg] Pointing RA	0	95.02220429843577	Alternating exposures requested	N	N
[deg] Pointing Dec	0	29.97157751408383	[s] Primary exposure time	3.2	3.2
[deg] Pointing Roll	0.0	257.733133858301			
[mm] SIM focus pos	-0.782348	-0.6828225247311905			
[mm] SIM defocus	0	0.8505141146731063			
[mm] SIM translation stage pos	-233.592463	250.4635187648994			
[mm] SIM translation stage offset	0	-0.007540371344731511			
[s] Observation start time (MET)	286255465.412125	286255464.38712			
Observation start date	2007-01-27T03:24:25	2007-01-27T03:24:24			
[s] Observation end time (MET)	286264895.412572	286264894.38757			
Observation end date	2007-01-27T06:01:35	2007-01-27T06:01:34			
Read mode	TIMED	TIMED			

2.3 Star Slots

2.4 FID Slots

A Summary

A.1 Status

V&V Scientist	Jen Lauer
V&V Date (YYYY-MM-DD)	2012.04.19
V&V Edition	1
V&V Disposition and Status	OK
V&V Charge Time	5.3520942096114

A.2 Comments