

V&V Reference Report

L2 ASCDS Version : 8.4.4

Observation 58552 - L2 Version 2
Chandra X-Ray Center

L2 Processing Date : Apr 19 2012

Contents

1	Front	2
2	OBI	3
2.1	OBI	3
2.1.1	Images	3
2.1.2	Bias	3
2.1.3	Parameters	4
2.1.4	Events	4
2.2	Compared Parameters	5
2.3	Star Slots	6
2.4	FID Slots	6
A	Summary	7
A.1	Status	7
A.2	Comments	7

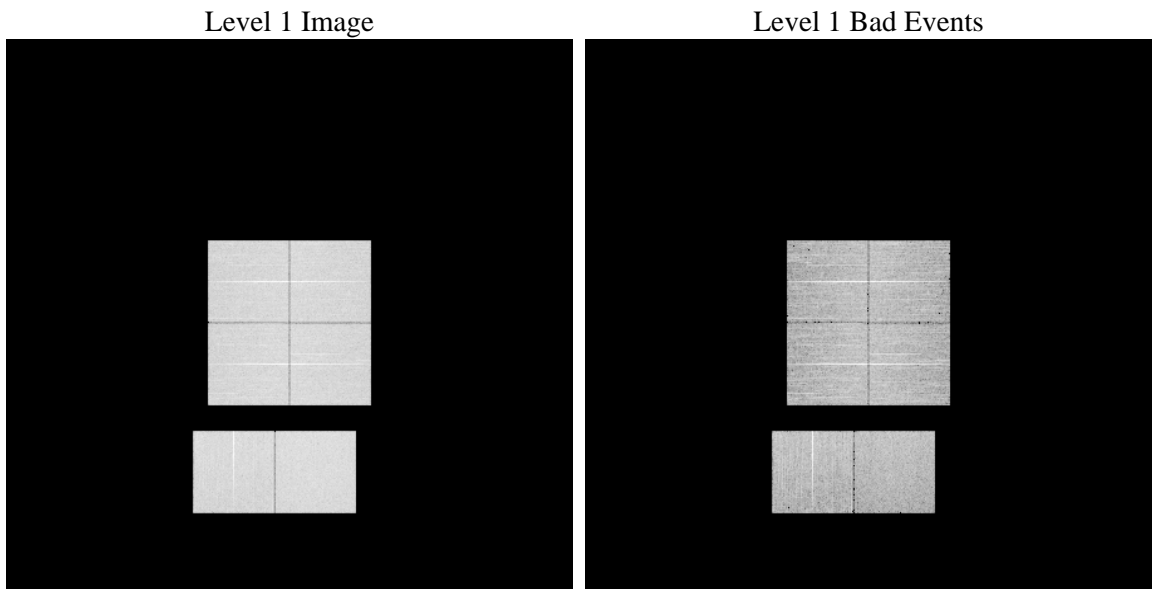
1 Front

seq_num	 	Sequence number
obs_id	58552	Observation id
title	ACIS-012367 diagnostics	Proposal title
observer	CHANDRA engineering request/realtime commanding	Principal investig
object	 	Source name
dtcycle	0	
cycle	P	events from which exps? Prim/Second/Both
ra_targ	0.0	Observer's specified target RA [deg]
dec_targ	0.0	Observer's specified target Dec [deg]
ra_nom	162.48466680683	Nominal RA [deg]
dec_nom	19.024771782742	Nominal Dec [deg]
roll_nom	87.46892741204	Nominal Roll [deg]
revision	2	Processing version of data
ontime	8274.9200031161	Sum of GTIs [s]
livetime	8170.137983478	Livetime [s]
ontime0	8274.8789631128	Sum of GTIs [s]
ontime1	8274.8379231095	Sum of GTIs [s]
ontime2	8274.7968831062	Sum of GTIs [s]
ontime3	8274.9610431194	Sum of GTIs [s]
ontime6	8271.5148328543	Sum of GTIs [s]
ontime7	8274.9200031161	Sum of GTIs [s]
l2events	788412	Number of level 2 events

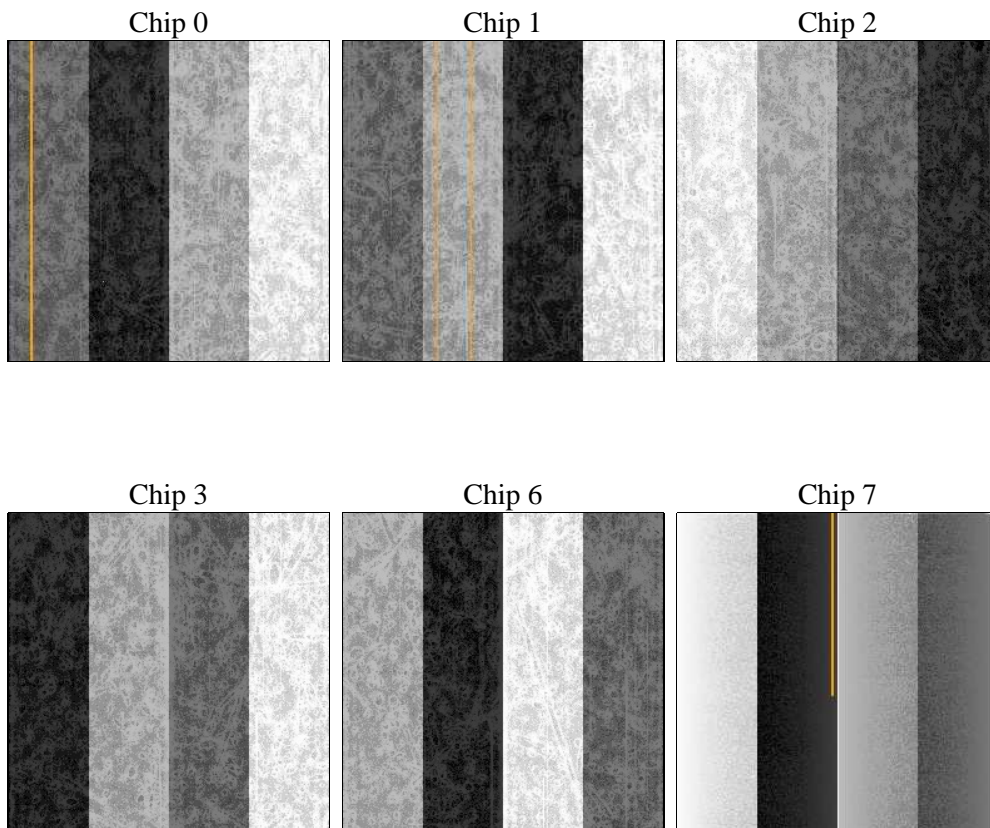
2 OBI

2.1 OBI

2.1.1 Images



2.1.2 Bias



2.1.3 Parameters

obi_num	0	Obi number	sched_exp_time	0.0	[s] Scheduled observation exposure time
ascdsver	8.4.4	Processing system revision	ontime	8274.9200031161	Sum of GTIs [s]
caldsver	4.4.9	 	ontime0	8274.8789631128	Sum of GTIs [s]
date	2012-04-19T05:17:03	Date and time of file creation	ontime1	8274.8379231095	Sum of GTIs [s]
revision	2	Processing version of data	ontime2	8274.7968831062	Sum of GTIs [s]
			ontime3	8274.9610431194	Sum of GTIs [s]
			ontime6	8271.5148328543	Sum of GTIs [s]
			ontime7	8274.9200031161	Sum of GTIs [s]
			l1events	1230170	Number of level 1 events

2.1.4 Events

	ccd 0	ccd 1	ccd 2	ccd 3	ccd 6	ccd 7		ccd 0	ccd 1	ccd 2	ccd 3	ccd 6	ccd 7
level 1 events	196274	197942	201620	201851	208795	223688	grade 0 events	71878	70904	73043	73785	74335	35411
rejected events	64726	66349	69567	68840	70039	60169		36%	35%	36%	36%	35%	15%
rejected %	32%	33%	34%	34%	33%	26%	grade 1 events	454	433	518	489	468	163
								0%	0%	0%	0%	0%	0%
							grade 2 events	23119	23864	22487	22595	24035	35309
								11%	12%	11%	11%	11%	15%
							grade 3 events	8728	8580	8877	8821	8742	15687
								4%	4%	4%	4%	4%	7%
							grade 4 events	8620	8590	8742	8881	8875	15786
								4%	4%	4%	4%	4%	7%
							grade 5 events	3768	3961	3539	4304	4276	10175
								1%	2%	1%	2%	2%	4%
							grade 6 events	19260	19710	18940	18976	22812	61371
								9%	9%	9%	9%	10%	27%
							grade 7 events	60447	61900	65474	64000	65252	49786
								30%	31%	32%	31%	31%	22%

2.2 Compared Parameters

Parameter	Planned	Actual	Parameter	Planned	Actual
Instrument	ACIS	ACIS	Obspar format version number	7	7
Detector	ACIS-012367	ACIS-012367	Obspar file type	PREDICTED	ACTUAL
Grating	NONE	NONE	Obspar update status	NONE	UPDATED
Data mode	FAINT	FAINT	On-chip summing requested	N	N
Observation mode	SECONDARY	SECONDARY	Subarray requested	NONE	NONE
[deg] Pointing RA	0	162.484666806834	Alternating exposures requested	N	N
[deg] Pointing Dec	0	19.02477178274166	[s] Primary exposure time	3.2	3.2
[deg] Pointing Roll	0.0	87.46892741204002			
[mm] SIM focus pos	-0.782348	-0.7809083437167272			
[mm] SIM defocus	0	0.7524282956875696			
[mm] SIM translation stage pos	-233.592463	250.466033080201			
[mm] SIM translation stage offset	0	-0.01005468664627074			
[s] Observation start time (MET)	286507603.124077	286507602.09908			
Observation start date	2007-01-30T01:26:43	2007-01-30T01:26:42			
[s] Observation end time (MET)	286546920.075941	286546919.05094			
Observation end date	2007-01-30T12:22:00	2007-01-30T12:21:59			
Read mode	TIMED	TIMED			

2.3 Star Slots

2.4 FID Slots

A Summary

A.1 Status

V&V Scientist	Beth Sundheim
V&V Date (YYYY-MM-DD)	2012.04.20
V&V Edition	1
V&V Disposition and Status	OK
V&V Charge Time	8.2749200031161

A.2 Comments