

V&V Reference Report

L2 ASCDS Version : 8.4.4

Observation 58545 - L2 Version 2
Chandra X-Ray Center

L2 Processing Date : Apr 19 2012

Contents

1	Front	2
2	OBI	3
2.1	OBI	3
2.1.1	Images	3
2.1.2	Bias	3
2.1.3	Parameters	4
2.1.4	Events	4
2.2	Compared Parameters	5
2.3	Star Slots	6
2.4	FID Slots	6
A	Summary	7
A.1	Status	7
A.2	Comments	7

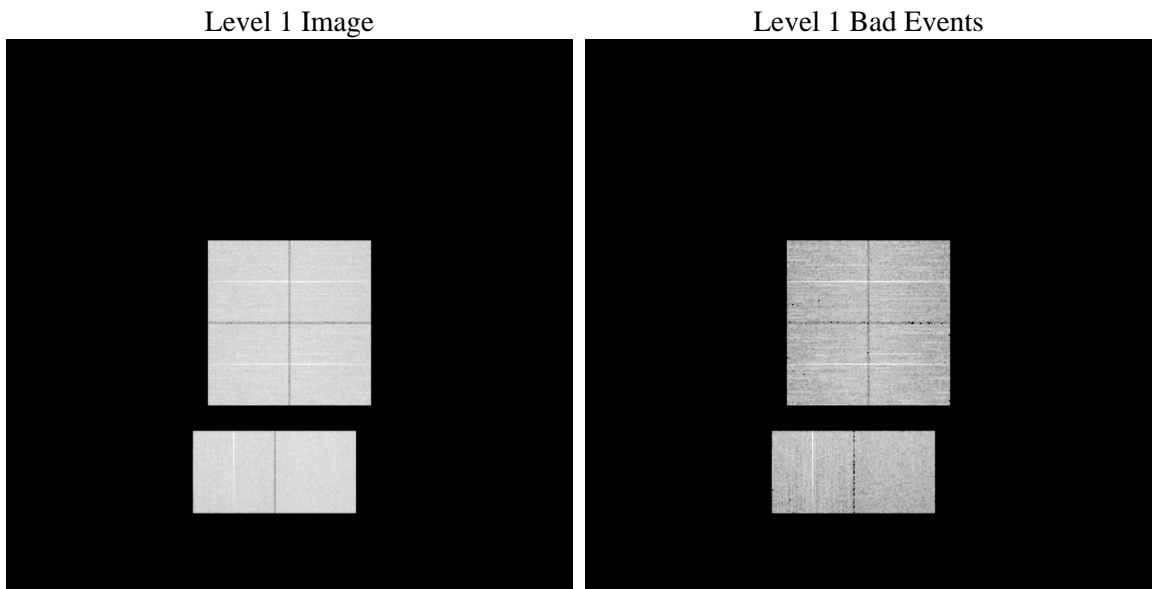
1 Front

seq_num	 	Sequence number
obs_id	58545	Observation id
title	ACIS-012367 diagnostics	Proposal title
observer	CHANDRA engineering request/realtime commanding	Principal investig
object	 	Source name
dtcycle	0	
cycle	P	events from which exps? Prim/Second/Both
ra_targ	0.0	Observer's specified target RA [deg]
dec_targ	0.0	Observer's specified target Dec [deg]
ra_nom	141.82399270418	Nominal RA [deg]
dec_nom	-15.88293355277	Nominal Dec [deg]
roll_nom	3.5876285199376	Nominal Roll [deg]
revision	2	Processing version of data
ontime	7445.2004927993	Sum of GTIs [s]
livetime	7350.9248811979	Livetime [s]
ontime0	7445.159452796	Sum of GTIs [s]
ontime1	7445.1184127927	Sum of GTIs [s]
ontime2	7445.0773727894	Sum of GTIs [s]
ontime3	7445.2415328026	Sum of GTIs [s]
ontime6	7445.0363327861	Sum of GTIs [s]
ontime7	7445.2004927993	Sum of GTIs [s]
l2events	705913	Number of level 2 events

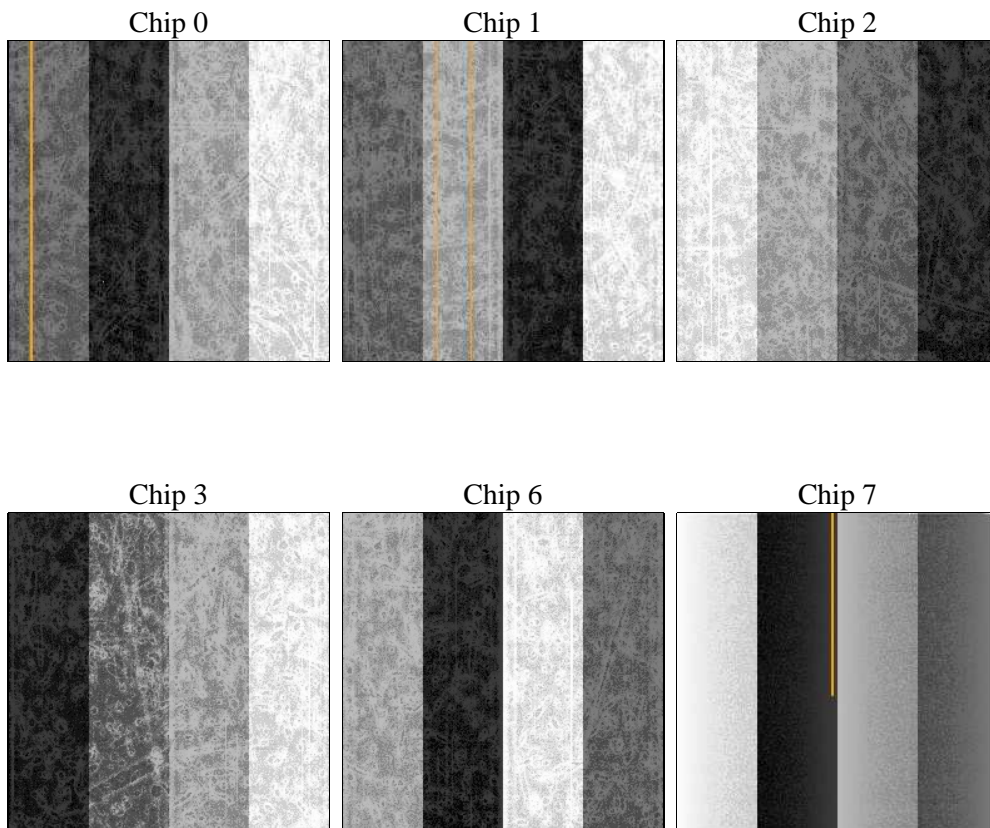
2 OBI

2.1 OBI

2.1.1 Images



2.1.2 Bias



2.1.3 Parameters

obi_num	0	Obi number	sched_exp_time	0.0	[s] Scheduled observation exposure time
ascdsver	8.4.4	Processing system revision	ontime	7445.2004927993	Sum of GTIs [s]
caldsver	4.4.9	 	ontime0	7445.159452796	Sum of GTIs [s]
date	2012-04-19T16:46:58	Date and time of file creation	ontime1	7445.1184127927	Sum of GTIs [s]
revision	2	Processing version of data	ontime2	7445.0773727894	Sum of GTIs [s]
			ontime3	7445.2415328026	Sum of GTIs [s]
			ontime6	7445.0363327861	Sum of GTIs [s]
			ontime7	7445.2004927993	Sum of GTIs [s]
			l1events	1114727	Number of level 1 events

2.1.4 Events

	ccd 0	ccd 1	ccd 2	ccd 3	ccd 6	ccd 7		ccd 0	ccd 1	ccd 2	ccd 3	ccd 6	ccd 7
level 1 events	178878	177620	183120	185567	187305	202237	grade 0 events	64570	63396	65571	66157	66019	31677
rejected events	60421	59849	64869	66372	63896	55193		36%	35%	35%	35%	35%	15%
rejected %	33%	33%	35%	35%	34%	27%	grade 1 events	464	413	475	486	355	148
								0%	0%	0%	0%	0%	0%
							grade 2 events	20756	21572	19989	20473	21731	32171
								11%	12%	10%	11%	11%	15%
							grade 3 events	7746	7624	7858	7817	7961	14101
								4%	4%	4%	4%	4%	6%
							grade 4 events	7724	7577	7913	7999	7682	14247
								4%	4%	4%	4%	4%	7%
							grade 5 events	3437	3513	3295	3789	3707	9084
								1%	1%	1%	2%	1%	4%
							grade 6 events	17715	17659	16980	16801	20073	54914
								9%	9%	9%	9%	10%	27%
							grade 7 events	56466	55866	61039	62045	59777	45895
								31%	31%	33%	33%	31%	22%

2.2 Compared Parameters

Parameter	Planned	Actual	Parameter	Planned	Actual
Instrument	ACIS	ACIS	Obspar format version number	7	7
Detector	ACIS-012367	ACIS-012367	Obspar file type	PREDICTED	ACTUAL
Grating	NONE	NONE	Obspar update status	NONE	UPDATED
Data mode	FAINT	FAINT	On-chip summing requested	N	N
Observation mode	SECONDARY	SECONDARY	Subarray requested	NONE	NONE
[deg] Pointing RA	0	141.8239927041811	Alternating exposures requested	N	N
[deg] Pointing Dec	0	-15.88293355276993	[s] Primary exposure time	3.2	3.2
[deg] Pointing Roll	0.0	3.587628519937645			
[mm] SIM focus pos	-0.782348	-0.6828225247311905			
[mm] SIM defocus	0	0.8505141146731063			
[mm] SIM translation stage pos	-233.592463	250.466033080201			
[mm] SIM translation stage offset	0	-0.01005468664627074			
[s] Observation start time (MET)	287167740.055406	287167739.0304			
Observation start date	2007-02-06T16:49:00	2007-02-06T16:48:59			
[s] Observation end time (MET)	287186589.806301	287186588.7813			
Observation end date	2007-02-06T22:03:10	2007-02-06T22:03:08			
Read mode	TIMED	TIMED			

2.3 Star Slots

2.4 FID Slots

A Summary

A.1 Status

V&V Scientist	Beth Sundheim
V&V Date (YYYY-MM-DD)	2012.04.20
V&V Edition	1
V&V Disposition and Status	OK
V&V Charge Time	7.4452004927993

A.2 Comments