

V&V Reference Report

L2 ASCDS Version : 8.4.4

Observation 58540 - L2 Version 2
Chandra X-Ray Center

L2 Processing Date : Apr 19 2012

Contents

1	Front	2
2	OBI	3
2.1	OBI	3
2.1.1	Images	3
2.1.2	Bias	3
2.1.3	Parameters	4
2.1.4	Events	4
2.2	Compared Parameters	5
2.3	Star Slots	6
2.4	FID Slots	6
A	Summary	7
A.1	Status	7
A.2	Comments	7

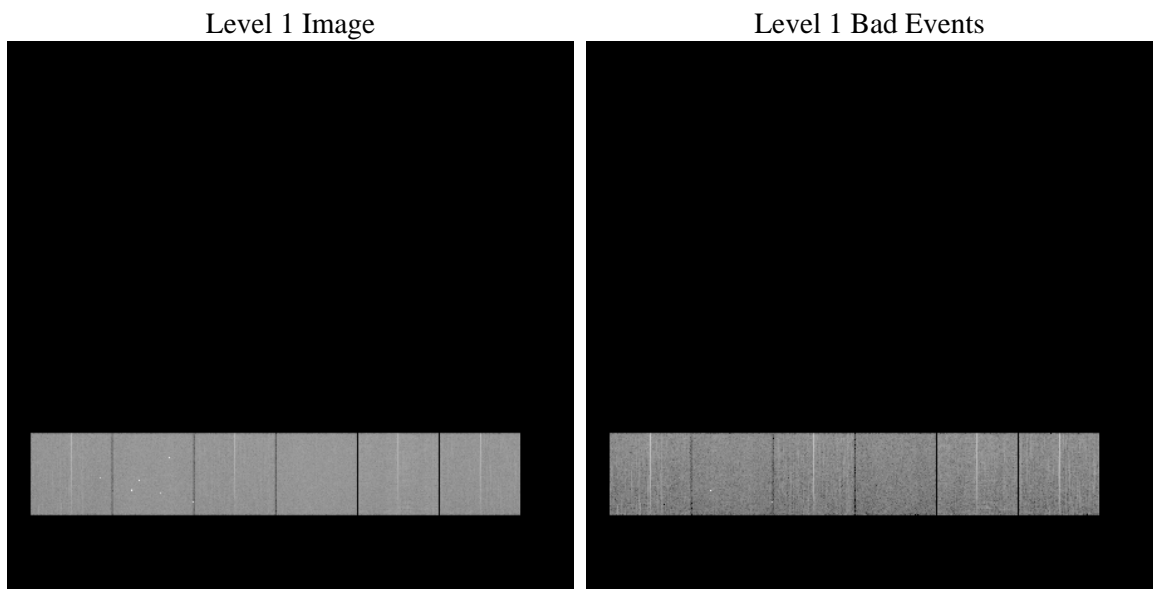
1 Front

seq_num	 	Sequence number
obs_id	58540	Observation id
title	ACIS-456789 diagnostics	Proposal title
observer	CHANDRA engineering request/realtime commanding	Principal investig
object	 	Source name
dtcycle	0	
cycle	P	events from which exps? Prim/Second/Both
ra_targ	0.0	Observer's specified target RA [deg]
dec_targ	0.0	Observer's specified target Dec [deg]
ra_nom	115.42411129345	Nominal RA [deg]
dec_nom	3.8843021945952	Nominal Dec [deg]
roll_nom	294.05997679513	Nominal Roll [deg]
revision	2	Processing version of data
ontime	7711.9999713302	Sum of GTIs [s]
livetime	7614.3459840843	Livetime [s]
ontime4	7711.9999713302	Sum of GTIs [s]
ontime5	7711.9999713302	Sum of GTIs [s]
ontime6	7711.9999713302	Sum of GTIs [s]
ontime7	7711.9999713302	Sum of GTIs [s]
ontime8	7711.9999713302	Sum of GTIs [s]
ontime9	7711.9999713302	Sum of GTIs [s]
l2events	859509	Number of level 2 events

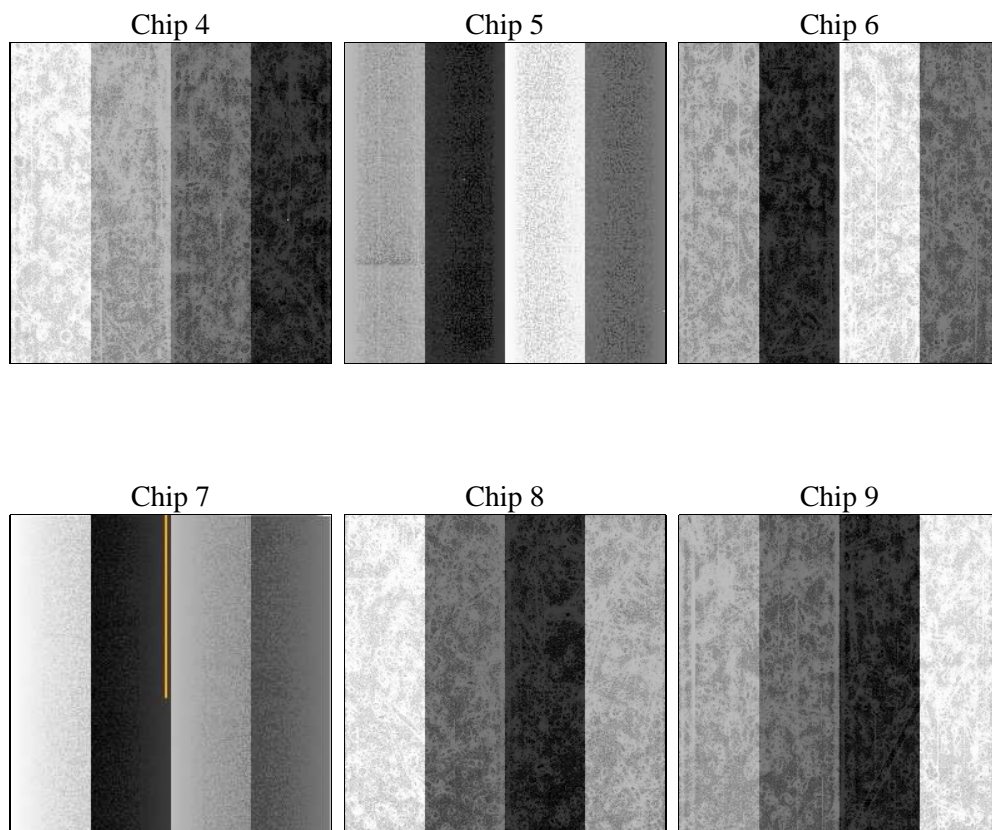
2 OBI

2.1 OBI

2.1.1 Images



2.1.2 Bias



2.1.3 Parameters

obi_num	0	Obi number	sched_exp_time	0.0	[s] Scheduled observation exposure time
ascdsver	8.4.4	Processing system revision	ontime	7711.9999713302	Sum of GTIs [s]
caldsver	4.4.9	 	ontime4	7711.9999713302	Sum of GTIs [s]
date	2012-04-19T18:07:01	Date and time of file creation	ontime5	7711.9999713302	Sum of GTIs [s]
revision	2	Processing version of data	ontime6	7711.9999713302	Sum of GTIs [s]
			ontime7	7711.9999713302	Sum of GTIs [s]
			ontime8	7711.9999713302	Sum of GTIs [s]
			ontime9	7711.9999713302	Sum of GTIs [s]
			l1events	1350458	Number of level 1 events

2.1.4 Events

	ccd 4	ccd 5	ccd 6	ccd 7	ccd 8	ccd 9		ccd 4	ccd 5	ccd 6	ccd 7	ccd 8	ccd 9
level 1 events	214985	228844	222117	228818	237515	218179	grade 0 events	80173	31537	78100	38168	82512	77146
rejected events	74870	66361	73190	58668	77416	74290		37%	13%	35%	16%	34%	35%
rejected %	34%	28%	32%	25%	32%	34%	grade 1 events	787	1552	486	173	529	560
								0%	0%	0%	0%	0%	0%
							grade 2 events	21618	58898	26044	37006	28790	24371
								10%	25%	11%	16%	12%	11%
							grade 3 events	9494	7897	9267	15932	10809	9250
								4%	3%	4%	6%	4%	4%
							grade 4 events	9490	7784	9054	15966	10567	9231
								4%	3%	4%	6%	4%	4%
							grade 5 events	3863	9288	4213	9929	5240	4527
								1%	4%	1%	4%	2%	2%
							grade 6 events	19340	56367	26462	63078	27421	23891
								8%	24%	11%	27%	11%	10%
							grade 7 events	70220	55521	68491	48566	71647	69203
								32%	24%	30%	21%	30%	31%

2.2 Compared Parameters

Parameter	Planned	Actual
Instrument	ACIS	ACIS
Detector	ACIS-456789	ACIS-456789
Grating	NONE	NONE
Data mode	FAINT	FAINT
Observation mode	SECONDARY	SECONDARY
[deg] Pointing RA	0	115.424111293455
[deg] Pointing Dec	0	3.884302194595191
[deg] Pointing Roll	0.0	294.0599767951262
[mm] SIM focus pos	-0.684267	-0.7809083437167272
[mm] SIM defocus	0	0.7524282956875696
[mm] SIM translation stage pos	-190.132523	250.466033080201
[mm] SIM translation stage offset	0	-0.01005468664627074
[s] Observation start time (MET)	287396452.41627	287396451.39126
Observation start date	2007-02-09T08:20:52	2007-02-09T08:20:51
[s] Observation end time (MET)	287414865.517145	287414864.49213
Observation end date	2007-02-09T13:27:46	2007-02-09T13:27:44
Read mode	TIMED	TIMED

Parameter	Planned	Actual
Obspar format version number	7	7
Obspar file type	PREDICTED	ACTUAL
Obspar update status	NONE	UPDATED
On-chip summing requested	N	N
Subarray requested	NONE	NONE
Alternating exposures requested	N	N
[s] Primary exposure time	3.2	3.2

2.3 Star Slots

2.4 FID Slots

A Summary

A.1 Status

V&V Scientist	Beth Sundheim
V&V Date (YYYY-MM-DD)	2012.04.20
V&V Edition	1
V&V Disposition and Status	OK
V&V Charge Time	7.7119999713302

A.2 Comments