

# V&V Reference Report

## L2 ASCDS Version : 8.4.4

Observation 58532 - L2 Version 2  
Chandra X-Ray Center

L2 Processing Date : Apr 20 2012

## Contents

<b>1</b>	<b>Front</b>	<b>2</b>
<b>2</b>	<b>OBI</b>	<b>3</b>
2.1	OBI . . . . .	3
2.1.1	Images . . . . .	3
2.1.2	Bias . . . . .	3
2.1.3	Parameters . . . . .	4
2.1.4	Events . . . . .	4
2.2	Compared Parameters . . . . .	5
2.3	Star Slots . . . . .	6
2.4	FID Slots . . . . .	6
<b>A</b>	<b>Summary</b>	<b>7</b>
A.1	Status . . . . .	7
A.2	Comments . . . . .	7

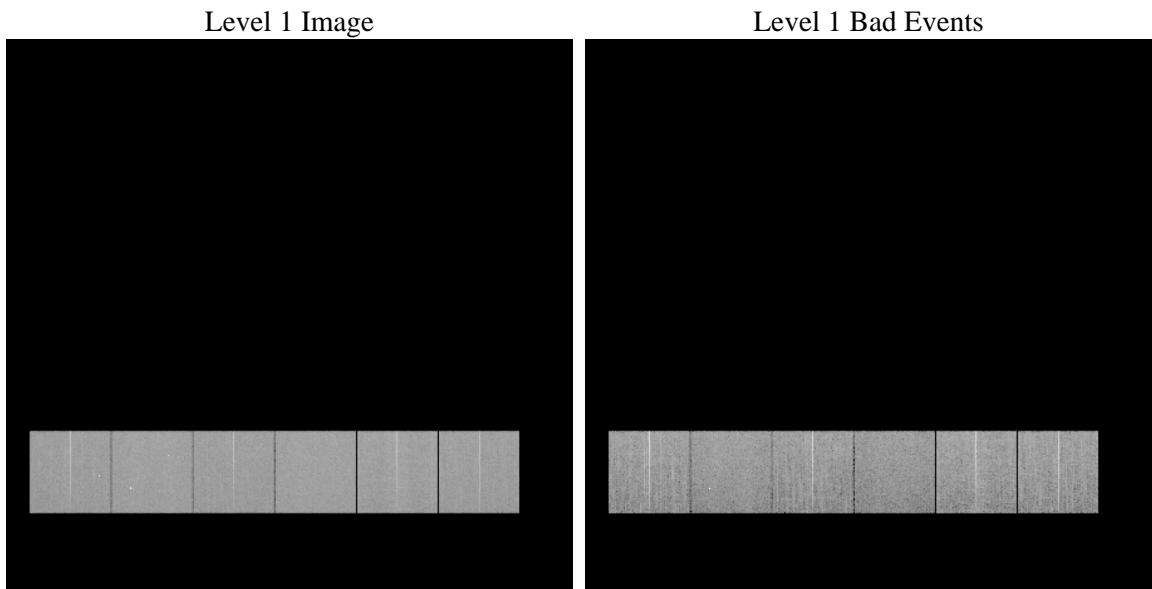
# 1 Front

seq_num	&#160	Sequence number
obs_id	58532	Observation id
title	ACIS-456789 diagnostics	Proposal title
observer	CHANDRA engineering request/realtime commanding	Principal investig
object	&#160	Source name
dtcycle	0	&#160
cycle	P	events from which exps? Prim/Second/Both
ra_targ	0.0	Observer's specified target RA [deg]
dec_targ	0.0	Observer's specified target Dec [deg]
ra_nom	133.0287715019	Nominal RA [deg]
dec_nom	-16.993803153725	Nominal Dec [deg]
roll_nom	337.24717380515	Nominal Roll [deg]
revision	2	Processing version of data
ontime	8271.8156954646	Sum of GTIs [s]
livetime	8167.0729844392	Livetime [s]
ontime4	8271.6925754547	Sum of GTIs [s]
ontime5	8271.7746554613	Sum of GTIs [s]
ontime6	8271.733615458	Sum of GTIs [s]
ontime7	8271.8156954646	Sum of GTIs [s]
ontime8	8271.6515354514	Sum of GTIs [s]
ontime9	8271.8567354679	Sum of GTIs [s]
l2events	803323	Number of level 2 events

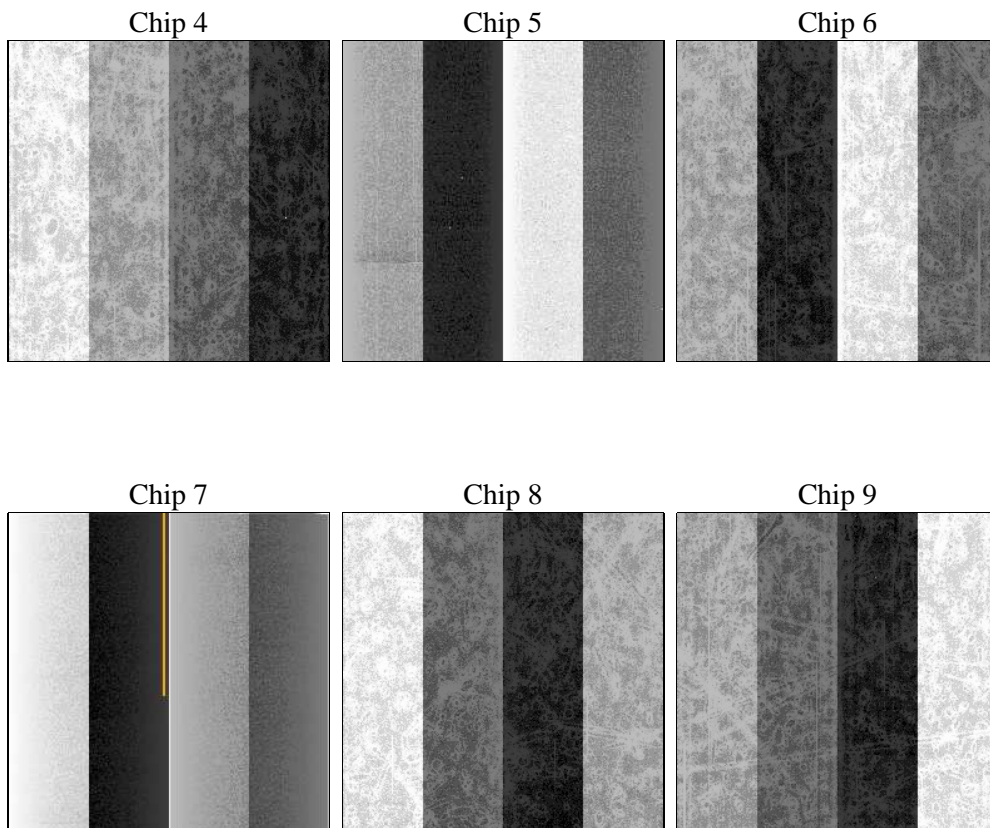
## 2 OBI

### 2.1 OBI

#### 2.1.1 Images



#### 2.1.2 Bias



### 2.1.3 Parameters

obi_num	0	Obi number	sched_exp_time	0.0	[s] Scheduled observation exposure time
ascdsver	8.4.4	Processing system revision	ontime	8271.8156954646	Sum of GTIs [s]
caldsver	4.4.9	&#160	ontime4	8271.6925754547	Sum of GTIs [s]
date	2012-04-20T03:56:34	Date and time of file creation	ontime5	8271.7746554613	Sum of GTIs [s]
revision	2	Processing version of data	ontime6	8271.733615458	Sum of GTIs [s]
			ontime7	8271.8156954646	Sum of GTIs [s]
			ontime8	8271.6515354514	Sum of GTIs [s]
			ontime9	8271.8567354679	Sum of GTIs [s]
			l1events	1296576	Number of level 1 events

### 2.1.4 Events

	ccd 4	ccd 5	ccd 6	ccd 7	ccd 8	ccd 9		ccd 4	ccd 5	ccd 6	ccd 7	ccd 8	ccd 9
level 1 events	205487	222582	207633	224921	226729	209224	grade 0 events	74484	27487	72882	35262	77389	71893
rejected events	77166	67852	71867	61054	79220	77047		36%	12%	35%	15%	34%	34%
rejected %	37%	30%	34%	27%	34%	36%	grade 1 events	723	199	417	169	502	501
								0%	0%	0%	0%	0%	0%
							grade 2 events	19925	55915	23717	35705	26477	22803
								9%	25%	11%	15%	11%	10%
							grade 3 events	8838	8859	8545	16119	10204	8670
								4%	3%	4%	7%	4%	4%
							grade 4 events	8444	7972	8650	15634	10208	8750
								4%	3%	4%	6%	4%	4%
							grade 5 events	4063	9714	4261	10417	5267	4600
								1%	4%	2%	4%	2%	2%
							grade 6 events	16682	54561	22027	61205	23275	20111
								8%	24%	10%	27%	10%	9%
							grade 7 events	72328	57875	67134	50410	73407	71896
								35%	26%	32%	22%	32%	34%

## 2.2 Compared Parameters

Parameter	Planned	Actual
Instrument	ACIS	ACIS
Detector	ACIS-456789	ACIS-456789
Grating	NONE	NONE
Data mode	FAINT	FAINT
Observation mode	SECONDARY	SECONDARY
[deg] Pointing RA	0	133.0287715018979
[deg] Pointing Dec	0	-16.99380315372516
[deg] Pointing Roll	0.0	337.2471738051456
[mm] SIM focus pos	-0.684267	-0.6828225247311905
[mm] SIM defocus	0	0.8505141146731063
[mm] SIM translation stage pos	-190.132523	250.466033080201
[mm] SIM translation stage offset	0	-0.01005468664627074
[s] Observation start time (MET)	287668596.07919	287668595.05419
Observation start date	2007-02-12T11:56:36	2007-02-12T11:56:35
[s] Observation end time (MET)	287691084.580258	287691083.55525
Observation end date	2007-02-12T18:11:25	2007-02-12T18:11:23
Read mode	TIMED	TIMED

Parameter	Planned	Actual
Obspar format version number	7	7
Obspar file type	PREDICTED	ACTUAL
Obspar update status	NONE	UPDATED
On-chip summing requested	N	N
Subarray requested	NONE	NONE
Alternating exposures requested	N	N
[s] Primary exposure time	3.2	3.2

## **2.3 Star Slots**

## **2.4 FID Slots**

## A Summary

### A.1 Status

V&V Scientist	Beth Sundheim
V&V Date (YYYY-MM-DD)	2012.04.22
V&V Edition	1
V&V Disposition and Status	OK
V&V Charge Time	8.2718156954646

### A.2 Comments