

V&V Reference Report

L2 ASCDS Version : 8.4.4

Observation 58523 - L2 Version 2
Chandra X-Ray Center

L2 Processing Date : Apr 20 2012

Contents

1	Front	2
2	OBI	3
2.1	OBI	3
2.1.1	Images	3
2.1.2	Bias	3
2.1.3	Parameters	4
2.1.4	Events	4
2.2	Compared Parameters	5
2.3	Star Slots	6
2.4	FID Slots	6
A	Summary	7
A.1	Status	7
A.2	Comments	7

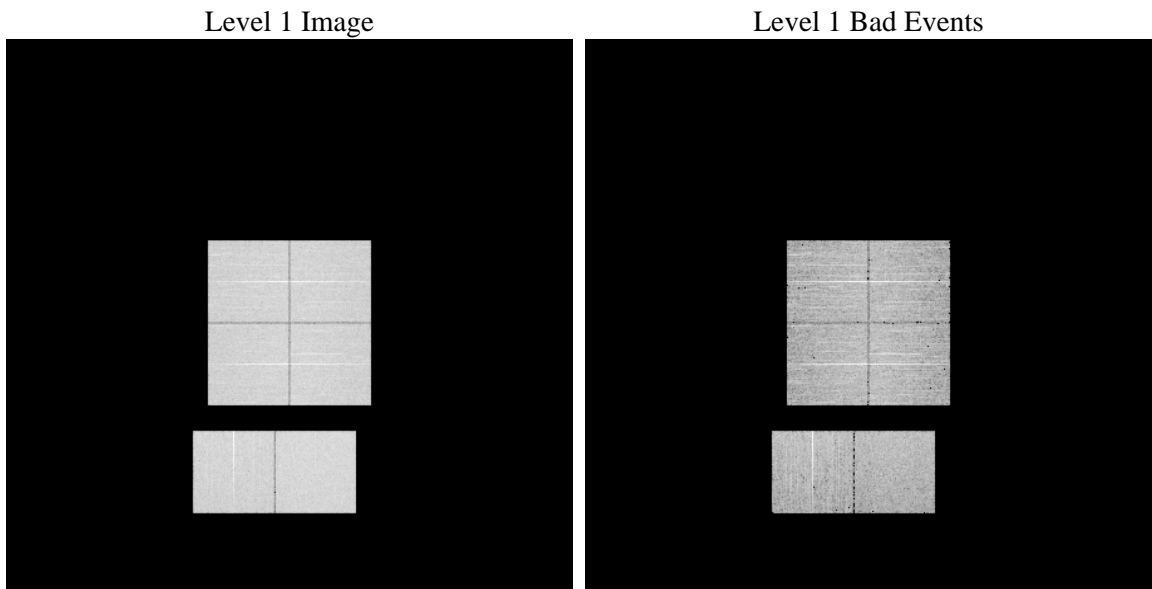
1 Front

seq_num	 	Sequence number
obs_id	58523	Observation id
title	ACIS-012367 diagnostics	Proposal title
observer	CHANDRA engineering request/realtime commanding	Principal investig
object	 	Source name
dtcycle	0	
cycle	P	events from which exps? Prim/Second/Both
ra_targ	0.0	Observer's specified target RA [deg]
dec_targ	0.0	Observer's specified target Dec [deg]
ra_nom	179.27031937165	Nominal RA [deg]
dec_nom	24.814916877566	Nominal Dec [deg]
roll_nom	114.69868733302	Nominal Roll [deg]
revision	2	Processing version of data
ontime	6201.5999769568	Sum of GTIs [s]
livetime	6123.0715838934	Livetime [s]
ontime0	6201.5999769568	Sum of GTIs [s]
ontime1	6198.3590762019	Sum of GTIs [s]
ontime2	6201.5999769568	Sum of GTIs [s]
ontime3	6198.3590762019	Sum of GTIs [s]
ontime6	6201.5999769568	Sum of GTIs [s]
ontime7	6201.5999769568	Sum of GTIs [s]
l2events	583238	Number of level 2 events

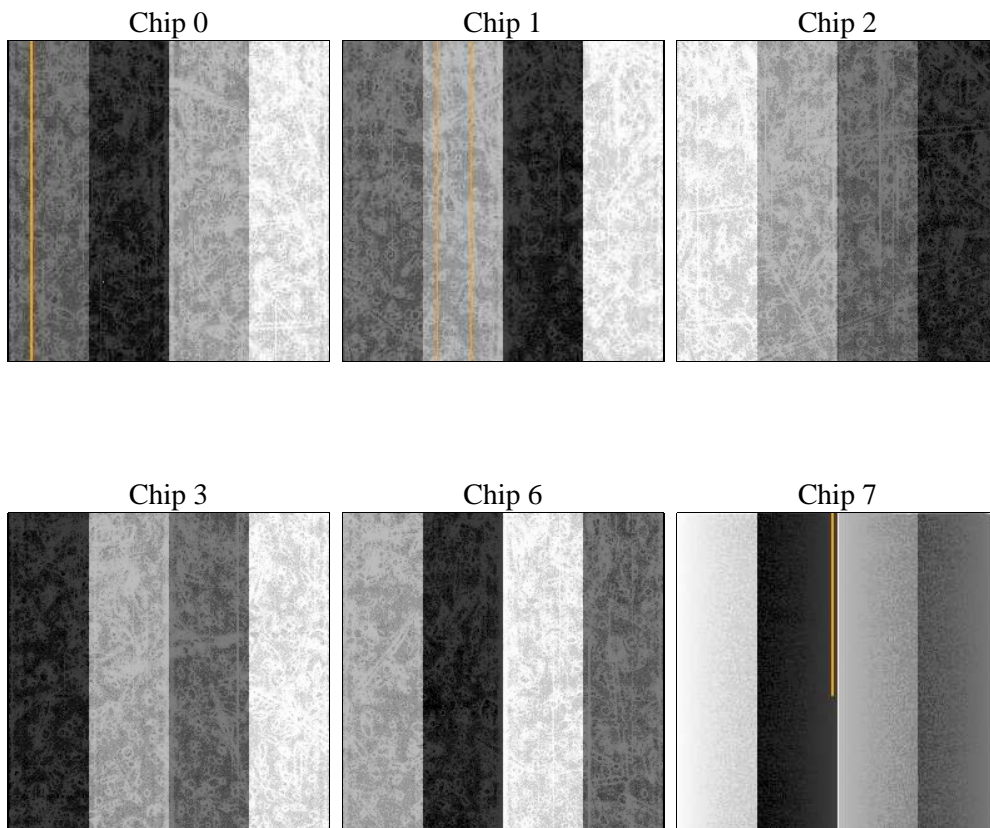
2 OBI

2.1 OBI

2.1.1 Images



2.1.2 Bias



2.1.3 Parameters

obi_num	0	Obi number	sched_exp_time	0.0	[s] Scheduled observation exposure time
ascdsver	8.4.4	Processing system revision	ontime	6201.5999769568	Sum of GTIs [s]
caldsver	4.4.9	 	ontime0	6201.5999769568	Sum of GTIs [s]
date	2012-04-20T06:58:35	Date and time of file creation	ontime1	6198.3590762019	Sum of GTIs [s]
revision	2	Processing version of data	ontime2	6201.5999769568	Sum of GTIs [s]
			ontime3	6198.3590762019	Sum of GTIs [s]
			ontime6	6201.5999769568	Sum of GTIs [s]
			ontime7	6201.5999769568	Sum of GTIs [s]
			l1events	925503	Number of level 1 events

2.1.4 Events

	ccd 0	ccd 1	ccd 2	ccd 3	ccd 6	ccd 7		ccd 0	ccd 1	ccd 2	ccd 3	ccd 6	ccd 7
level 1 events	149681	148579	149793	153122	155725	168603	grade 0 events	52685	52804	54308	54288	54583	25804
rejected events	52604	50683	52019	55069	53766	46845		35%	35%	36%	35%	35%	15%
rejected %	35%	34%	34%	35%	34%	27%	grade 1 events	322	295	423	374	289	130
								0%	0%	0%	0%	0%	0%
							grade 2 events	17210	17742	16440	16843	17781	26425
								11%	11%	10%	10%	11%	15%
							grade 3 events	6527	6284	6526	6558	6451	11806
								4%	4%	4%	4%	4%	7%
							grade 4 events	6336	6155	6456	6501	6569	11720
								4%	4%	4%	4%	4%	6%
							grade 5 events	2927	2930	2780	3284	3121	7794
								1%	1%	1%	2%	2%	4%
							grade 6 events	14319	14911	14044	13863	16575	46003
								9%	10%	9%	9%	10%	27%
							grade 7 events	49355	47458	48816	51411	50356	38921
								32%	31%	32%	33%	32%	23%

2.2 Compared Parameters

Parameter	Planned	Actual
Instrument	ACIS	ACIS
Detector	ACIS-012367	ACIS-012367
Grating	NONE	NONE
Data mode	FAINT	FAINT
Observation mode	SECONDARY	SECONDARY
[deg] Pointing RA	0	179.2703193716451
[deg] Pointing Dec	0	24.8149168775659
[deg] Pointing Roll	0.0	114.6986873330209
[mm] SIM focus pos	-0.782348	-0.6828225247311905
[mm] SIM defocus	0	0.8505141146731063
[mm] SIM translation stage pos	-233.592463	250.466033080201
[mm] SIM translation stage offset	0	-0.01005468664627074
[s] Observation start time (MET)	288352961.961724	288352960.9367
Observation start date	2007-02-20T10:02:42	2007-02-20T10:02:40
[s] Observation end time (MET)	288374409.062744	288374408.03772
Observation end date	2007-02-20T16:00:09	2007-02-20T16:00:08
Read mode	TIMED	TIMED

Parameter	Planned	Actual
Obspar format version number	7	7
Obspar file type	PREDICTED	ACTUAL
Obspar update status	NONE	UPDATED
On-chip summing requested	N	N
Subarray requested	NONE	NONE
Alternating exposures requested	N	N
[s] Primary exposure time	3.2	3.2

2.3 Star Slots

2.4 FID Slots

A Summary

A.1 Status

V&V Scientist	Beth Sundheim
V&V Date (YYYY-MM-DD)	2012.04.22
V&V Edition	1
V&V Disposition and Status	OK
V&V Charge Time	6.2015999769568

A.2 Comments