

V&V Reference Report

L2 ASCDS Version : 8.4.4

Observation 58522 - L2 Version 2
Chandra X-Ray Center

L2 Processing Date : Apr 20 2012

Contents

1	Front	2
2	OBI	3
2.1	OBI	3
2.1.1	Images	3
2.1.2	Bias	3
2.1.3	Parameters	4
2.1.4	Events	4
2.2	Compared Parameters	5
2.3	Star Slots	6
2.4	FID Slots	6
A	Summary	7
A.1	Status	7
A.2	Comments	7

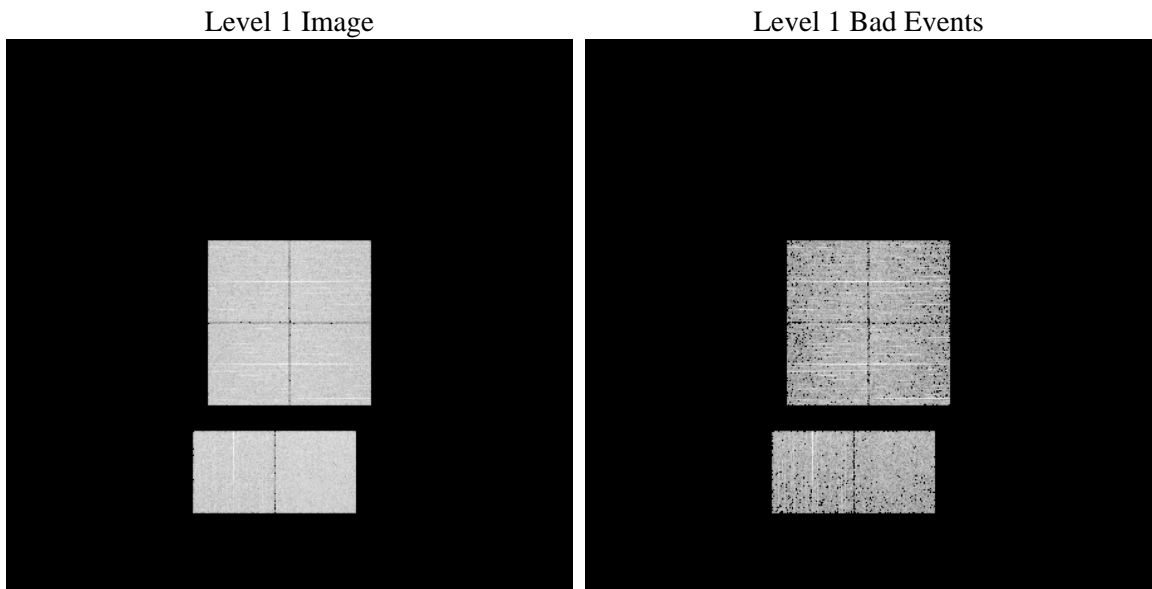
1 Front

seq_num	 	Sequence number
obs_id	58522	Observation id
title	ACIS-012367 diagnostics	Proposal title
observer	CHANDRA engineering request/realtime commanding	Principal investig
object	 	Source name
dtcycle	0	
cycle	P	events from which exps? Prim/Second/Both
ra_targ	0.0	Observer's specified target RA [deg]
dec_targ	0.0	Observer's specified target Dec [deg]
ra_nom	181.99615015753	Nominal RA [deg]
dec_nom	-1.9715954369855	Nominal Dec [deg]
roll_nom	64.739037370761	Nominal Roll [deg]
revision	2	Processing version of data
ontime	2655.5431915522	Sum of GTIs [s]
livetime	2621.9171046846	Livetime [s]
ontime0	2655.5021515489	Sum of GTIs [s]
ontime1	2655.4611115456	Sum of GTIs [s]
ontime2	2655.4200715423	Sum of GTIs [s]
ontime3	2655.5842315555	Sum of GTIs [s]
ontime6	2655.379031539	Sum of GTIs [s]
ontime7	2655.5431915522	Sum of GTIs [s]
l2events	250990	Number of level 2 events

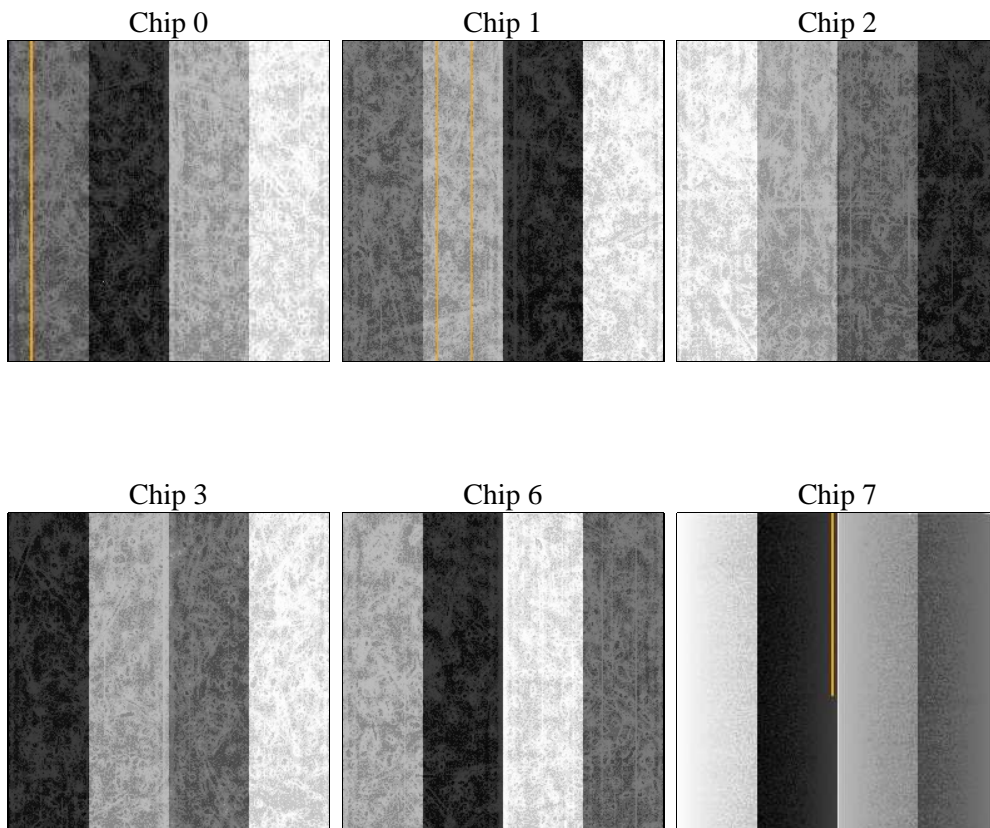
2 OBI

2.1 OBI

2.1.1 Images



2.1.2 Bias



2.1.3 Parameters

obi_num	0	Obi number	sched_exp_time	0.0	[s] Scheduled observation exposure time
ascdsver	8.4.4	Processing system revision	ontime	2655.5431915522	Sum of GTIs [s]
caldsver	4.4.9	 	ontime0	2655.5021515489	Sum of GTIs [s]
date	2012-04-20T14:54:48	Date and time of file creation	ontime1	2655.4611115456	Sum of GTIs [s]
revision	2	Processing version of data	ontime2	2655.4200715423	Sum of GTIs [s]
			ontime3	2655.5842315555	Sum of GTIs [s]
			ontime6	2655.379031539	Sum of GTIs [s]
			ontime7	2655.5431915522	Sum of GTIs [s]
			l1events	397625	Number of level 1 events

2.1.4 Events

	ccd 0	ccd 1	ccd 2	ccd 3	ccd 6	ccd 7		ccd 0	ccd 1	ccd 2	ccd 3	ccd 6	ccd 7
level 1 events	63458	63687	65925	65156	67034	72365	grade 0 events	22687	22533	23520	23452	23651	11541
rejected events	21716	21807	23655	23091	23033	19664		35%	35%	35%	35%	35%	15%
rejected %	34%	34%	35%	35%	34%	27%	grade 1 events	158	125	178	154	135	49
								0%	0%	0%	0%	0%	0%
							grade 2 events	7374	7640	7119	7098	7781	11330
								11%	11%	10%	10%	11%	15%
							grade 3 events	2862	2726	2788	2786	2785	5140
								4%	4%	4%	4%	4%	7%
							grade 4 events	2745	2677	2874	2722	2770	5045
								4%	4%	4%	4%	4%	6%
							grade 5 events	1254	1237	1200	1399	1394	3373
								1%	1%	1%	2%	2%	4%
							grade 6 events	6126	6360	6022	6054	7067	19707
								9%	9%	9%	9%	10%	27%
							grade 7 events	20252	20389	22224	21491	21451	16180
								31%	32%	33%	32%	32%	22%

2.2 Compared Parameters

Parameter	Planned	Actual	Parameter	Planned	Actual
Instrument	ACIS	ACIS	Obspar format version number	7	7
Detector	ACIS-012367	ACIS-012367	Obspar file type	PREDICTED	ACTUAL
Grating	NONE	NONE	Obspar update status	NONE	UPDATED
Data mode	FAINT	FAINT	On-chip summing requested	N	N
Observation mode	SECONDARY	SECONDARY	Subarray requested	NONE	NONE
[deg] Pointing RA	0	181.9961501575347	Alternating exposures requested	N	N
[deg] Pointing Dec	0	-1.971595436985477	[s] Primary exposure time	3.2	3.2
[deg] Pointing Roll	0.0	64.73903737076139			
[mm] SIM focus pos	-0.782348	-0.7809083437167272			
[mm] SIM defocus	0	0.7524282956875696			
[mm] SIM translation stage pos	-233.592463	250.466033080201			
[mm] SIM translation stage offset	0	-0.01005468664627074			
[s] Observation start time (MET)	288544214.670792	288544213.64579			
Observation start date	2007-02-22T15:10:15	2007-02-22T15:10:13			
[s] Observation end time (MET)	288555602.421333	288555601.39633			
Observation end date	2007-02-22T18:20:02	2007-02-22T18:20:01			
Read mode	TIMED	TIMED			

2.3 Star Slots

2.4 FID Slots

A Summary

A.1 Status

V&V Scientist	Beth Sundheim
V&V Date (YYYY-MM-DD)	2012.04.22
V&V Edition	1
V&V Disposition and Status	OK
V&V Charge Time	2.6555431915522

A.2 Comments