

# V&V Reference Report

## L2 ASCDS Version : 8.4.4

Observation 58506 - L2 Version 2  
Chandra X-Ray Center

L2 Processing Date : Apr 21 2012

## Contents

<b>1</b>	<b>Front</b>	<b>2</b>
<b>2</b>	<b>OBI</b>	<b>3</b>
2.1	OBI . . . . .	3
2.1.1	Images . . . . .	3
2.1.2	Bias . . . . .	3
2.1.3	Parameters . . . . .	4
2.1.4	Events . . . . .	4
2.2	Compared Parameters . . . . .	5
2.3	Star Slots . . . . .	6
2.4	FID Slots . . . . .	6
<b>A</b>	<b>Summary</b>	<b>7</b>
A.1	Status . . . . .	7
A.2	Comments . . . . .	7

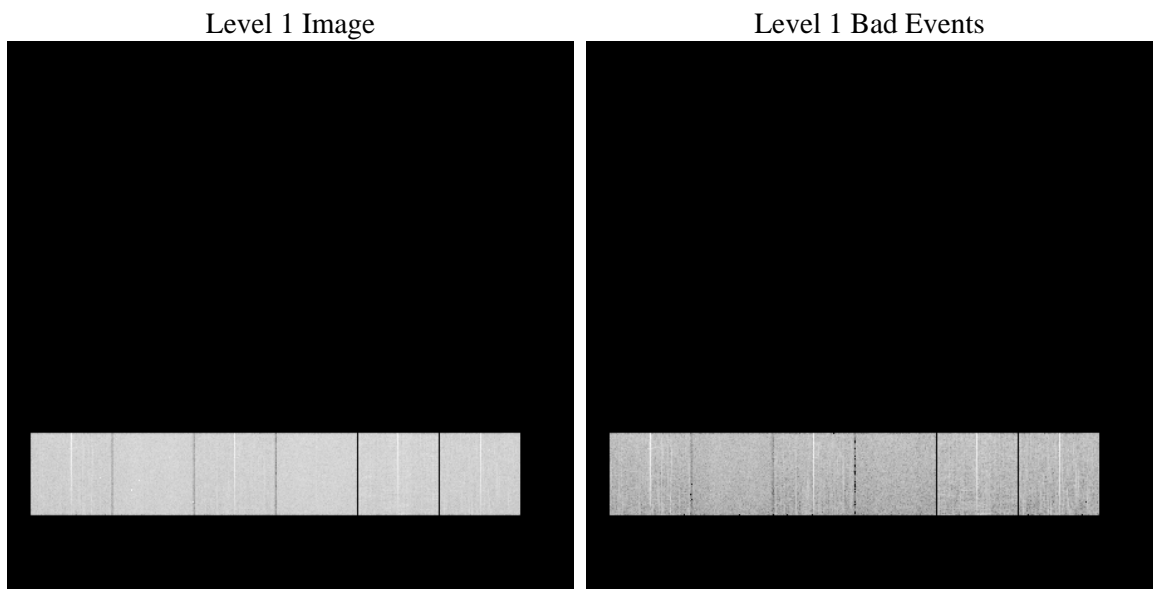
# 1 Front

seq_num	&#160	Sequence number
obs_id	58506	Observation id
title	ACIS-456789 diagnostics	Proposal title
observer	CHANDRA engineering request/realtime commanding	Principal investig
object	&#160	Source name
dtcycle	0	&#160
cycle	P	events from which exps? Prim/Second/Both
ra_targ	0.0	Observer's specified target RA [deg]
dec_targ	0.0	Observer's specified target Dec [deg]
ra_nom	138.00972478858	Nominal RA [deg]
dec_nom	15.470685326978	Nominal Dec [deg]
roll_nom	254.03333016097	Nominal Roll [deg]
revision	2	Processing version of data
ontime	7762.2260691524	Sum of GTIs [s]
livetime	7663.9360888133	Livetime [s]
ontime4	7752.4662556648	Sum of GTIs [s]
ontime5	7762.2260691524	Sum of GTIs [s]
ontime6	7758.9850589037	Sum of GTIs [s]
ontime7	7762.2260691524	Sum of GTIs [s]
ontime8	7762.1481665969	Sum of GTIs [s]
ontime9	7762.2260492444	Sum of GTIs [s]
l2events	734919	Number of level 2 events

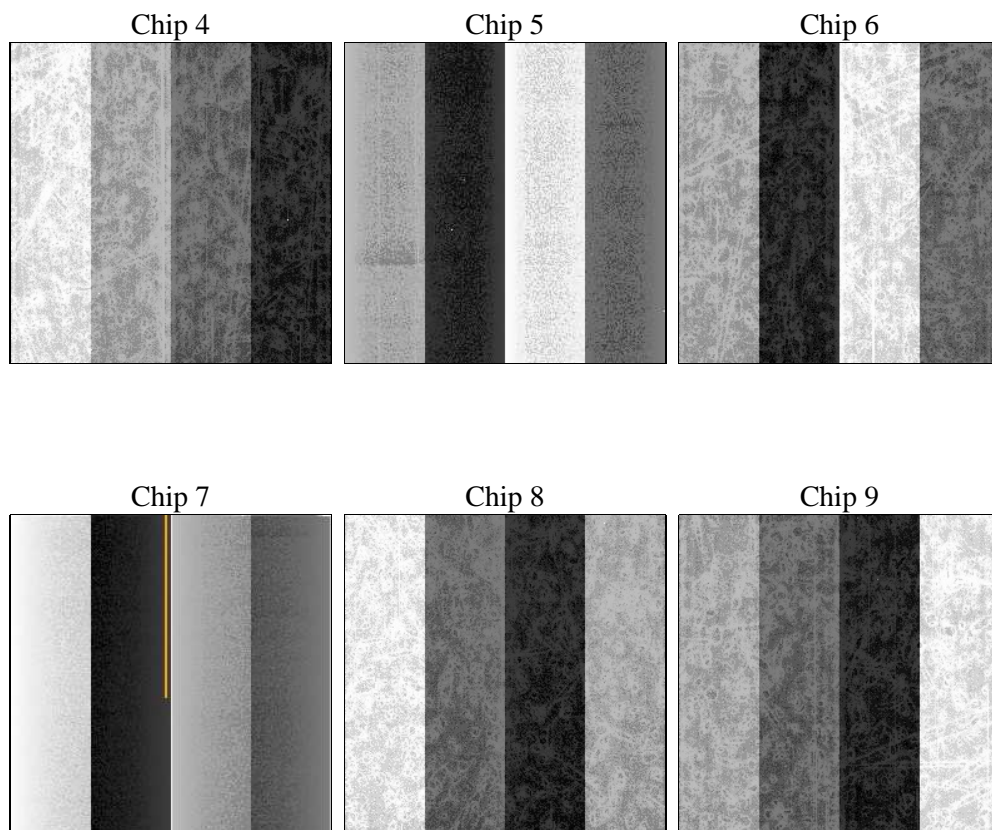
## 2 OBI

### 2.1 OBI

#### 2.1.1 Images



#### 2.1.2 Bias



### 2.1.3 Parameters

obi_num	0	Obi number	sched_exp_time	0.0	[s] Scheduled observation exposure time
ascdsver	8.4.4	Processing system revision	ontime	7762.2260691524	Sum of GTIs [s]
caldsver	4.4.9	&#160	ontime4	7752.4662556648	Sum of GTIs [s]
date	2012-04-21T02:30:48	Date and time of file creation	ontime5	7762.2260691524	Sum of GTIs [s]
revision	2	Processing version of data	ontime6	7758.9850589037	Sum of GTIs [s]
			ontime7	7762.2260691524	Sum of GTIs [s]
			ontime8	7762.1481665969	Sum of GTIs [s]
			ontime9	7762.2260492444	Sum of GTIs [s]
			l1events	1206695	Number of level 1 events

### 2.1.4 Events

	ccd 4	ccd 5	ccd 6	ccd 7	ccd 8	ccd 9		ccd 4	ccd 5	ccd 6	ccd 7	ccd 8	ccd 9
level 1 events	190218	205541	195867	210320	211599	193150	grade 0 events	66873	21453	66030	32161	70713	66419
rejected events	74739	65346	71871	59475	76903	71913		35%	10%	33%	15%	33%	34%
rejected %	39%	31%	36%	28%	36%	37%	grade 1 events	656	196	362	172	464	431
								0%	0%	0%	0%	0%	0%
							grade 2 events	17564	54150	22023	33198	24287	20649
								9%	26%	11%	15%	11%	10%
							grade 3 events	7923	6349	7790	14122	9114	7794
								4%	3%	3%	6%	4%	4%
							grade 4 events	8138	6197	7816	14041	9075	7981
								4%	3%	3%	6%	4%	4%
							grade 5 events	3786	8544	3835	9618	4928	4169
								1%	4%	1%	4%	2%	2%
							grade 6 events	14981	52046	20337	57323	21507	18394
								7%	25%	10%	27%	10%	9%
							grade 7 events	70297	56606	67674	49685	71511	67313
								36%	27%	34%	23%	33%	34%

## 2.2 Compared Parameters

Parameter	Planned	Actual
Instrument	ACIS	ACIS
Detector	ACIS-456789	ACIS-456789
Grating	NONE	NONE
Data mode	FAINT	FAINT
Observation mode	SECONDARY	SECONDARY
[deg] Pointing RA	0	138.0097247885779
[deg] Pointing Dec	0	15.47068532697763
[deg] Pointing Roll	0.0	254.0333301609725
[mm] SIM focus pos	-0.684267	-0.7809083437167272
[mm] SIM defocus	0	0.7524282956875696
[mm] SIM translation stage pos	-190.132523	250.466033080201
[mm] SIM translation stage offset	0	-0.01005468664627074
[s] Observation start time (MET)	289494342.565967	289494341.54095
Observation start date	2007-03-05T15:05:43	2007-03-05T15:05:41
[s] Observation end time (MET)	289516853.617038	289516852.59202
Observation end date	2007-03-05T21:20:54	2007-03-05T21:20:52
Read mode	TIMED	TIMED

Parameter	Planned	Actual
Obspar format version number	7	7
Obspar file type	PREDICTED	ACTUAL
Obspar update status	NONE	UPDATED
On-chip summing requested	N	N
Subarray requested	NONE	NONE
Alternating exposures requested	N	N
[s] Primary exposure time	3.2	3.2

## 2.3 Star Slots

## 2.4 FID Slots

## A Summary

### A.1 Status

V&V Scientist	Beth Sundheim
V&V Date (YYYY-MM-DD)	2012.04.22
V&V Edition	1
V&V Disposition and Status	OK
V&V Charge Time	7.7622260691524

### A.2 Comments