

# V&V Reference Report

## L2 ASCDS Version : 8.4.4

Observation 58483 - L2 Version 2  
Chandra X-Ray Center

L2 Processing Date : Apr 21 2012

## Contents

<b>1</b>	<b>Front</b>	<b>2</b>
<b>2</b>	<b>OBI</b>	<b>3</b>
2.1	OBI . . . . .	3
2.1.1	Images . . . . .	3
2.1.2	Bias . . . . .	3
2.1.3	Parameters . . . . .	4
2.1.4	Events . . . . .	4
2.2	Compared Parameters . . . . .	5
2.3	Star Slots . . . . .	6
2.4	FID Slots . . . . .	6
<b>A</b>	<b>Summary</b>	<b>7</b>
A.1	Status . . . . .	7
A.2	Comments . . . . .	7

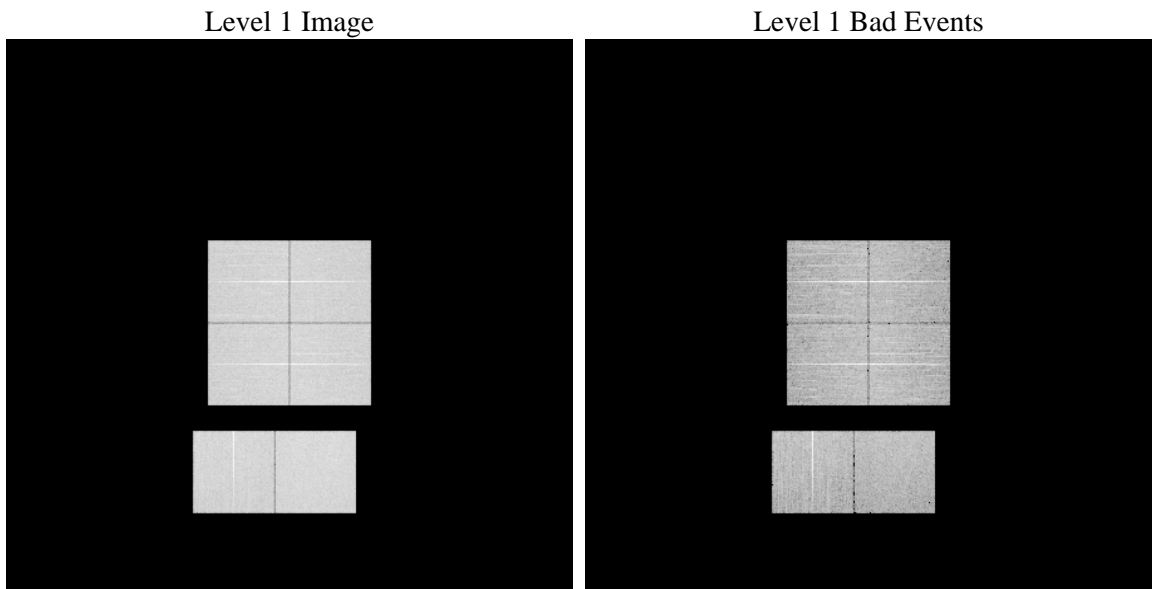
# 1 Front

seq_num	&#160	Sequence number
obs_id	58483	Observation id
title	ACIS-012367 diagnostics	Proposal title
observer	CHANDRA engineering request/realtime commanding	Principal investig
object	&#160	Source name
dtcycle	0	&#160
cycle	P	events from which exps? Prim/Second/Both
ra_targ	0.0	Observer's specified target RA [deg]
dec_targ	0.0	Observer's specified target Dec [deg]
ra_nom	164.03052706311	Nominal RA [deg]
dec_nom	-23.693365772582	Nominal Dec [deg]
roll_nom	340.45445160006	Nominal Roll [deg]
revision	2	Processing version of data
ontime	8168.4900144339	Sum of GTIs [s]
livetime	8065.0556753969	Livetime [s]
ontime0	8168.4489744306	Sum of GTIs [s]
ontime1	8168.4079344273	Sum of GTIs [s]
ontime2	8168.366894424	Sum of GTIs [s]
ontime3	8168.5310544372	Sum of GTIs [s]
ontime6	8168.3258544207	Sum of GTIs [s]
ontime7	8168.4900144339	Sum of GTIs [s]
l2events	756780	Number of level 2 events

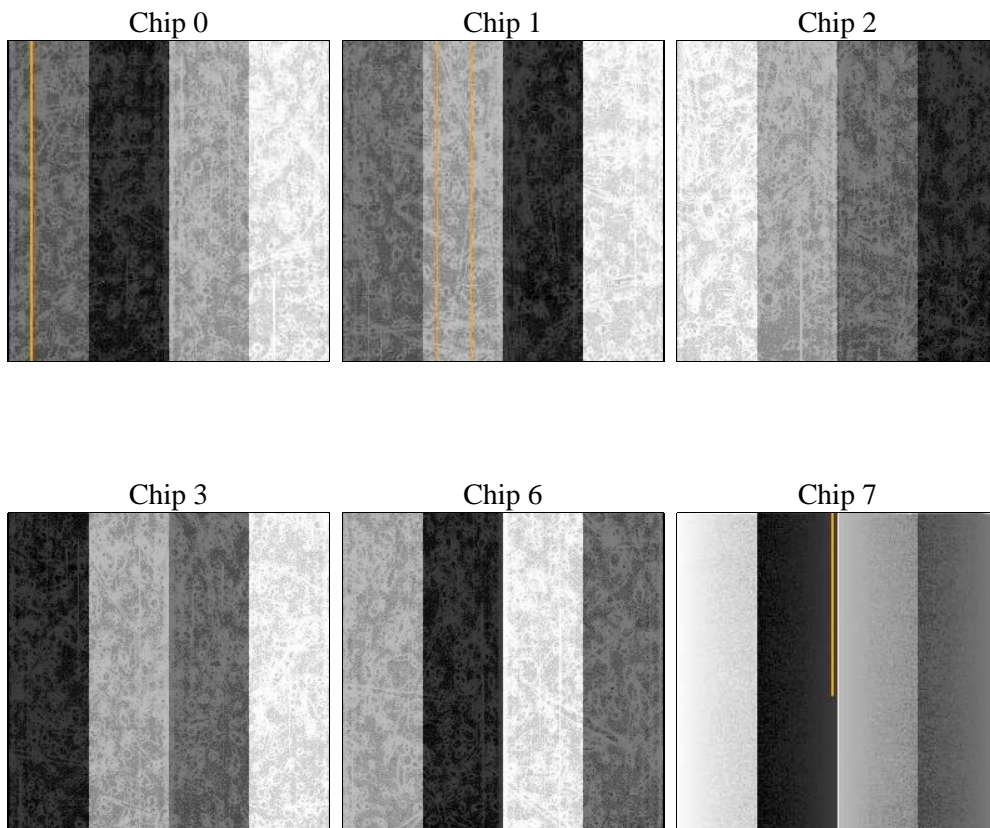
## 2 OBI

### 2.1 OBI

#### 2.1.1 Images



#### 2.1.2 Bias



### 2.1.3 Parameters

obi_num	0	Obi number	sched_exp_time	0.0	[s] Scheduled observation exposure time
ascdsver	8.4.4	Processing system revision	ontime	8168.4900144339	Sum of GTIs [s]
caldsver	4.4.9	&#160	ontime0	8168.4489744306	Sum of GTIs [s]
date	2012-04-21T16:18:54	Date and time of file creation	ontime1	8168.4079344273	Sum of GTIs [s]
revision	2	Processing version of data	ontime2	8168.366894424	Sum of GTIs [s]
			ontime3	8168.5310544372	Sum of GTIs [s]
			ontime6	8168.3258544207	Sum of GTIs [s]
			ontime7	8168.4900144339	Sum of GTIs [s]
			l1events	1219850	Number of level 1 events

### 2.1.4 Events

	ccd 0	ccd 1	ccd 2	ccd 3	ccd 6	ccd 7		ccd 0	ccd 1	ccd 2	ccd 3	ccd 6	ccd 7
level 1 events	197033	193099	198455	202982	205376	222905	grade 0 events	69562	69041	71934	71883	71340	34399
rejected events	71043	66536	71023	75532	73441	64468		35%	35%	36%	35%	34%	15%
rejected %	36%	34%	35%	37%	35%	28%	grade 1 events	488	388	498	577	441	163
								0%	0%	0%	0%	0%	0%
							grade 2 events	22476	23184	21694	22056	23515	34984
								11%	12%	10%	10%	11%	15%
							grade 3 events	8321	8272	8610	8454	8611	15346
								4%	4%	4%	4%	4%	6%
							grade 4 events	8439	8284	8598	8515	8536	15220
								4%	4%	4%	4%	4%	6%
							grade 5 events	3776	3906	3753	4164	4051	10141
								1%	2%	1%	2%	1%	4%
							grade 6 events	18894	19462	18287	18134	21718	60629
								9%	10%	9%	8%	10%	27%
							grade 7 events	65077	60562	65081	69199	67164	52023
								33%	31%	32%	34%	32%	23%

## 2.2 Compared Parameters

Parameter	Planned	Actual	Parameter	Planned	Actual
Instrument	ACIS	ACIS	Obspar format version number	7	7
Detector	ACIS-012367	ACIS-012367	Obspar file type	PREDICTED	ACTUAL
Grating	NONE	NONE	Obspar update status	NONE	UPDATED
Data mode	FAINT	FAINT	On-chip summing requested	N	N
Observation mode	SECONDARY	SECONDARY	Subarray requested	NONE	NONE
[deg] Pointing RA	0	164.0305270631084	Alternating exposures requested	N	N
[deg] Pointing Dec	0	-23.69336577258237	[s] Primary exposure time	3.2	3.2
[deg] Pointing Roll	0.0	340.4544516000597			
[mm] SIM focus pos	-0.782348	-0.6828225247311905			
[mm] SIM defocus	0	0.8505141146731063			
[mm] SIM translation stage pos	-233.592463	250.466033080201			
[mm] SIM translation stage offset	0	-0.01005468664627074			
[s] Observation start time (MET)	290181879.798649	290181878.77366			
Observation start date	2007-03-13T14:04:40	2007-03-13T14:04:38			
[s] Observation end time (MET)	290203189.549663	290203188.52467			
Observation end date	2007-03-13T19:59:50	2007-03-13T19:59:48			
Read mode	TIMED	TIMED			

## 2.3 Star Slots

## 2.4 FID Slots

## A Summary

### A.1 Status

V&V Scientist	Beth Sundheim
V&V Date (YYYY-MM-DD)	2012.04.23
V&V Edition	1
V&V Disposition and Status	OK
V&V Charge Time	8.1684900144339

### A.2 Comments