

V&V Reference Report

L2 ASCDS Version : 8.4.4

Observation 58439 - L2 Version 2
Chandra X-Ray Center

L2 Processing Date : Apr 23 2012

Contents

1	Front	2
2	OBI	3
2.1	OBI	3
2.1.1	Images	3
2.1.2	Bias	3
2.1.3	Parameters	4
2.1.4	Events	4
2.2	Compared Parameters	5
2.3	Star Slots	6
2.4	FID Slots	6
A	Summary	7
A.1	Status	7
A.2	Comments	7

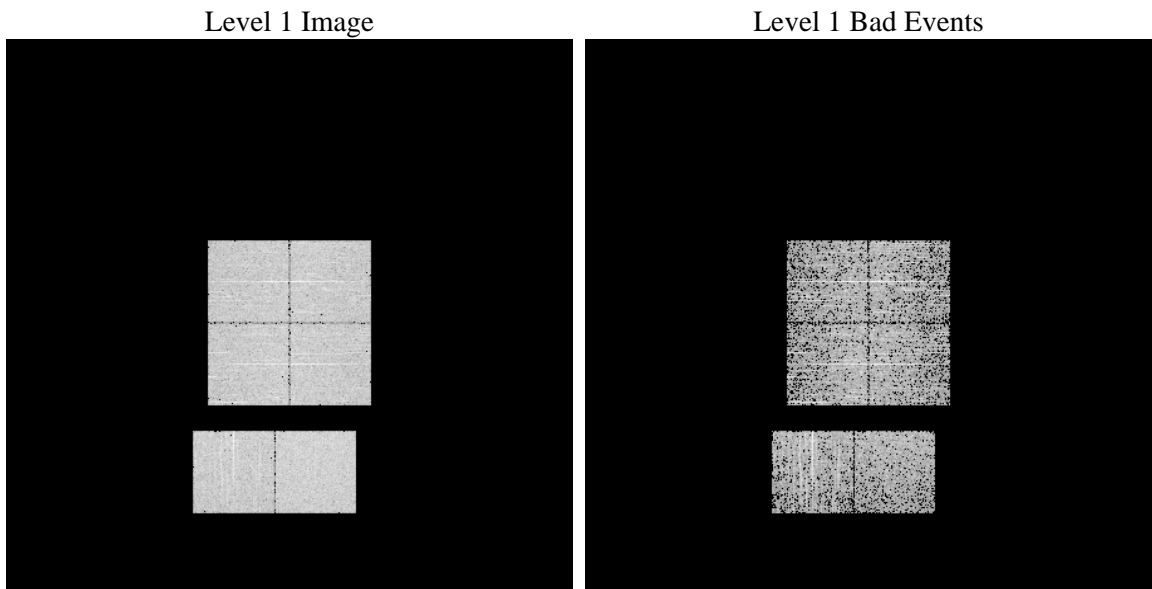
1 Front

seq_num	 	Sequence number
obs_id	58439	Observation id
title	ACIS-012367 diagnostics	Proposal title
observer	CHANDRA engineering request/realtime commanding	Principal investig
object	 	Source name
dtcycle	0	
cycle	P	events from which exps? Prim/Second/Both
ra_targ	0.0	Observer's specified target RA [deg]
dec_targ	0.0	Observer's specified target Dec [deg]
ra_nom	209.62018290653	Nominal RA [deg]
dec_nom	-34.876472654354	Nominal Dec [deg]
roll_nom	21.927991942105	Nominal Roll [deg]
revision	2	Processing version of data
ontime	1603.1999940872	Sum of GTIs [s]
livetime	1582.8993104309	Livetime [s]
ontime0	1603.1999940872	Sum of GTIs [s]
ontime1	1603.1999940872	Sum of GTIs [s]
ontime2	1603.1999940872	Sum of GTIs [s]
ontime3	1603.1999940872	Sum of GTIs [s]
ontime6	1603.1999940872	Sum of GTIs [s]
ontime7	1603.1999940872	Sum of GTIs [s]
l2events	146213	Number of level 2 events

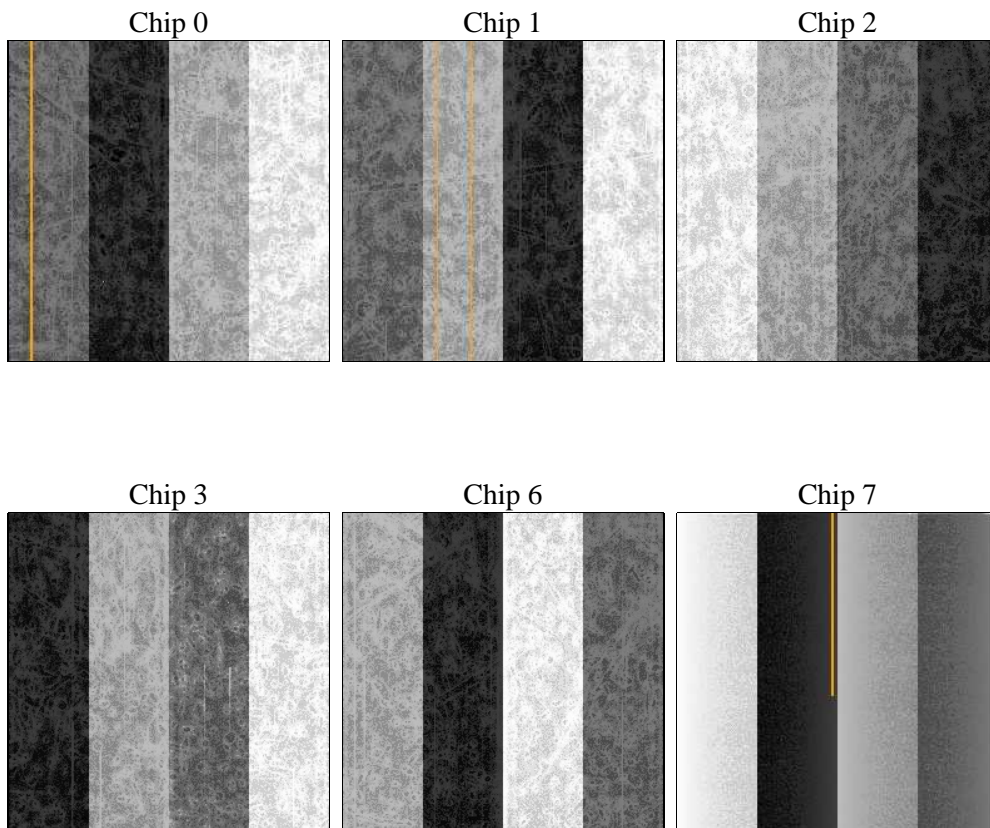
2 OBI

2.1 OBI

2.1.1 Images



2.1.2 Bias



2.1.3 Parameters

obi_num	0	Obi number	sched_exp_time	0.0	[s] Scheduled observation exposure time
ascdsver	8.4.4	Processing system revision	ontime	1603.1999940872	Sum of GTIs [s]
caldsver	4.4.9	 	ontime0	1603.1999940872	Sum of GTIs [s]
date	2012-04-23T09:04:15	Date and time of file creation	ontime1	1603.1999940872	Sum of GTIs [s]
revision	2	Processing version of data	ontime2	1603.1999940872	Sum of GTIs [s]
			ontime3	1603.1999940872	Sum of GTIs [s]
			ontime6	1603.1999940872	Sum of GTIs [s]
			ontime7	1603.1999940872	Sum of GTIs [s]
			l1events	235306	Number of level 1 events

2.1.4 Events

	ccd 0	ccd 1	ccd 2	ccd 3	ccd 6	ccd 7		ccd 0	ccd 1	ccd 2	ccd 3	ccd 6	ccd 7
level 1 events	36922	38049	39089	38231	39749	43266	grade 0 events	13255	13175	13485	13438	13599	6542
rejected events	12814	13446	14553	13823	14434	12158		35%	34%	34%	35%	34%	15%
rejected %	34%	35%	37%	36%	36%	28%	grade 1 events	103	84	112	84	82	25
								0%	0%	0%	0%	0%	0%
							grade 2 events	4207	4586	4155	4257	4415	6872
								11%	12%	10%	11%	11%	15%
							grade 3 events	1601	1541	1629	1571	1564	3074
								4%	4%	4%	4%	3%	7%
							grade 4 events	1467	1537	1707	1619	1658	2935
								3%	4%	4%	4%	4%	6%
							grade 5 events	786	770	740	875	826	2050
								2%	2%	1%	2%	2%	4%
							grade 6 events	3578	3764	3560	3523	4079	11685
								9%	9%	9%	9%	10%	27%
							grade 7 events	11925	12592	13701	12864	13526	10083
								32%	33%	35%	33%	34%	23%

2.2 Compared Parameters

Parameter	Planned	Actual
Instrument	ACIS	ACIS
Detector	ACIS-012367	ACIS-012367
Grating	NONE	NONE
Data mode	FAINT	FAINT
Observation mode	SECONDARY	SECONDARY
[deg] Pointing RA	0	209.6201829065282
[deg] Pointing Dec	0	-34.87647265435449
[deg] Pointing Roll	0.0	21.92799194210487
[mm] SIM focus pos	-0.782348	-0.6828225247311905
[mm] SIM defocus	0	0.8505141146731063
[mm] SIM translation stage pos	-233.592463	250.4635187648994
[mm] SIM translation stage offset	0	-0.007540371344731511
[s] Observation start time (MET)	292657826.866555	292657825.84155
Observation start date	2007-04-11T05:50:27	2007-04-11T05:50:25
[s] Observation end time (MET)	292669253.5671	292669252.54209
Observation end date	2007-04-11T09:00:54	2007-04-11T09:00:52
Read mode	TIMED	TIMED

Parameter	Planned	Actual
Obspar format version number	7	7
Obspar file type	PREDICTED	ACTUAL
Obspar update status	NONE	UPDATED
On-chip summing requested	N	N
Subarray requested	NONE	NONE
Alternating exposures requested	N	N
[s] Primary exposure time	3.2	3.2

2.3 Star Slots

2.4 FID Slots

A Summary

A.1 Status

V&V Scientist	Beth Sundheim
V&V Date (YYYY-MM-DD)	2012.04.24
V&V Edition	1
V&V Disposition and Status	OK
V&V Charge Time	1.6031999940872

A.2 Comments