

V&V Reference Report

L2 ASCDS Version : 8.4.4

Observation 58398 - L2 Version 3
Chandra X-Ray Center

L2 Processing Date : Apr 24 2012

Contents

1	Front	2
2	OBI	3
2.1	OBI	3
2.1.1	Images	3
2.1.2	Bias	3
2.1.3	Parameters	4
2.1.4	Events	4
2.2	Compared Parameters	5
2.3	Star Slots	6
2.4	FID Slots	6
A	Summary	7
A.1	Status	7
A.2	Comments	7

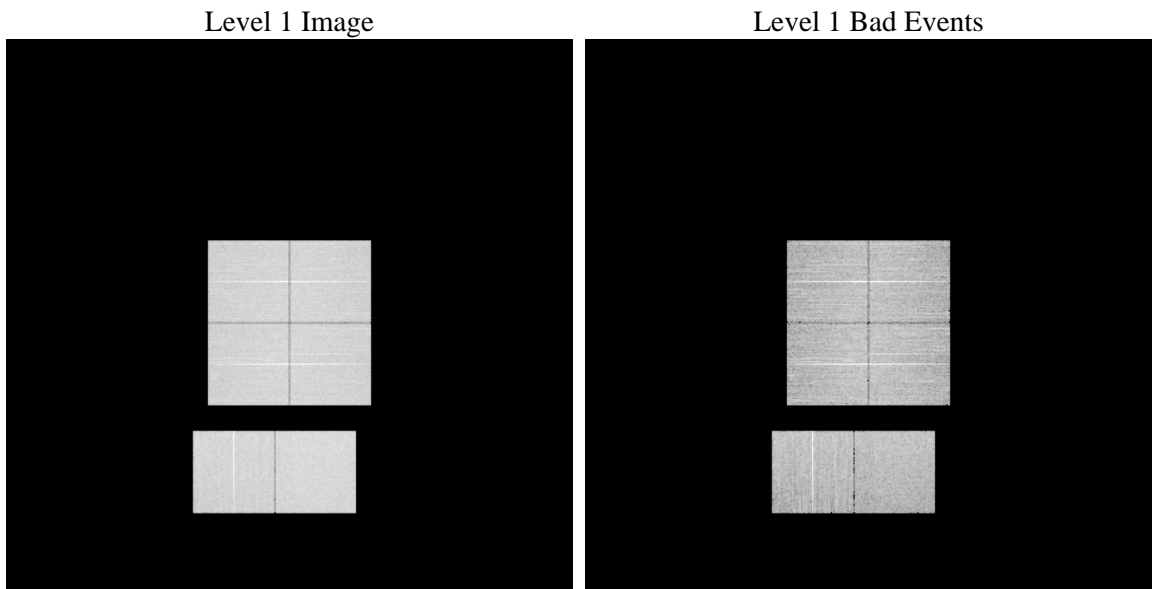
1 Front

seq_num	 	Sequence number
obs_id	58398	Observation id
title	ACIS-012367 diagnostics	Proposal title
observer	CHANDRA engineering request/realtime commanding	Principal investig
object	 	Source name
dtcycle	0	
cycle	P	events from which exps? Prim/Second/Both
ra_targ	0.0	Observer's specified target RA [deg]
dec_targ	0.0	Observer's specified target Dec [deg]
ra_nom	204.03133615725	Nominal RA [deg]
dec_nom	-35.012995405114	Nominal Dec [deg]
roll_nom	300.44427776177	Nominal Roll [deg]
revision	3	Processing version of data
ontime	7595.826842308	Sum of GTIs [s]
livetime	7499.6439091729	Livetime [s]
ontime0	7595.7858023047	Sum of GTIs [s]
ontime1	7595.7447623014	Sum of GTIs [s]
ontime2	7595.7037222981	Sum of GTIs [s]
ontime3	7595.8678823113	Sum of GTIs [s]
ontime6	7595.6626822948	Sum of GTIs [s]
ontime7	7595.826842308	Sum of GTIs [s]
l2events	683858	Number of level 2 events

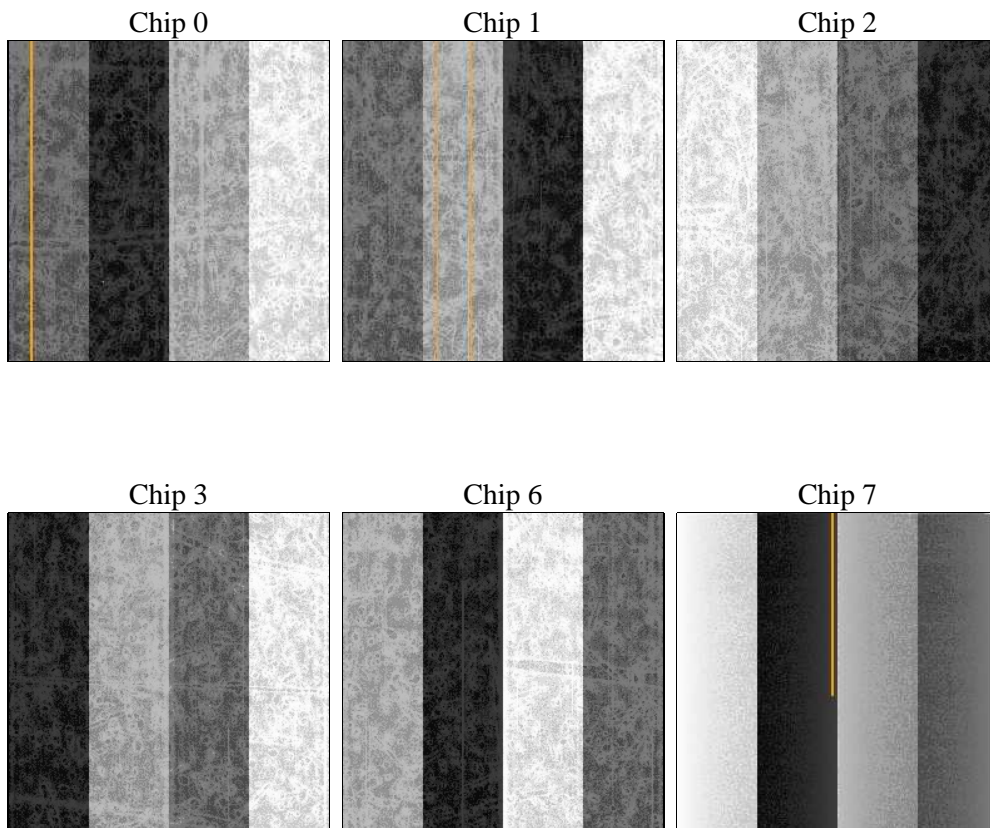
2 OBI

2.1 OBI

2.1.1 Images



2.1.2 Bias



2.1.3 Parameters

obi_num	0	Obi number	sched_exp_time	6420	[s] Scheduled observation exposure time
ascdsver	8.4.4	Processing system revision	ontime	7595.826842308	Sum of GTIs [s]
caldsver	4.4.9	 	ontime0	7595.7858023047	Sum of GTIs [s]
date	2012-04-24T21:50:15	Date and time of file creation	ontime1	7595.7447623014	Sum of GTIs [s]
revision	3	Processing version of data	ontime2	7595.7037222981	Sum of GTIs [s]
			ontime3	7595.8678823113	Sum of GTIs [s]
			ontime6	7595.6626822948	Sum of GTIs [s]
			ontime7	7595.826842308	Sum of GTIs [s]
			l1events	1149165	Number of level 1 events

2.1.4 Events

	ccd 0	ccd 1	ccd 2	ccd 3	ccd 6	ccd 7		ccd 0	ccd 1	ccd 2	ccd 3	ccd 6	ccd 7
level 1 events	184243	184191	189383	189117	191386	210845	grade 0 events	63092	62914	65219	64753	65125	32040
rejected events	71177	70003	74742	74582	72879	64710		34%	34%	34%	34%	34%	15%
rejected %	38%	38%	39%	39%	38%	30%	grade 1 events	477	390	517	482	371	164
								0%	0%	0%	0%	0%	0%
							grade 2 events	20534	21313	20088	20448	21328	32647
								11%	11%	10%	10%	11%	15%
							grade 3 events	7546	7582	7797	7784	7766	14358
								4%	4%	4%	4%	4%	6%
							grade 4 events	7703	7739	7950	7819	7654	14734
								4%	4%	4%	4%	3%	6%
							grade 5 events	3769	3992	3560	4175	4215	10295
								2%	2%	1%	2%	2%	4%
							grade 6 events	17203	17731	16695	16646	19778	56127
								9%	9%	8%	8%	10%	26%
							grade 7 events	63919	62530	67557	67010	65149	50480
								34%	33%	35%	35%	34%	23%

2.2 Compared Parameters

Parameter	Planned	Actual
Instrument	ACIS	ACIS
Detector	ACIS-012367	ACIS-012367
Grating	NONE	NONE
Data mode	FAINT	FAINT
Observation mode	SECONDARY	SECONDARY
[deg] Pointing RA	204.0312090348193	204.0313361572487
[deg] Pointing Dec	-35.01292764127692	-35.01299540511449
[deg] Pointing Roll	300.4442048169467	300.4442777617739
[mm] SIM focus pos	-0.78090834371673	-0.78090834371673
[mm] SIM defocus	0.7524282194390134	0.7524282194390134
[mm] SIM translation stage pos	250.4660330802	250.4660330802
[mm] SIM translation stage offset	-0.01005726120527584	-0.01005726120527584
[s] Observation start time (MET)	295391985.796961	295391985.796961
Observation start date	2007-05-12T21:49:00	2007-05-12T21:19:45
[s] Observation end time (MET)	295401504.615555	295401504.615555
Observation end date	2007-05-12T23:36:00	2007-05-12T23:58:24
Read mode	TIMED	TIMED

Parameter	Planned	Actual
Obspar format version number	7	7
Obspar file type	PREDICTED	ACTUAL
Obspar update status	OVERRIDE	OVERRIDE
Number of optional ACIS chips dropped	0	0
On-chip summing requested	N	N
Subarray requested	NONE	NONE
Alternating exposures requested	N	N
[s] Primary exposure time	3.2	3.2

2.3 Star Slots

2.4 FID Slots

A Summary

A.1 Status

V&V Scientist	Jen Lauer
V&V Date (YYYY-MM-DD)	2012.04.25
V&V Edition	1
V&V Disposition and Status	OK
V&V Charge Time	7.595826842308

A.2 Comments