

V&V Reference Report

L2 ASCDS Version : 8.4.4

Observation 58326 - L2 Version 2
Chandra X-Ray Center

L2 Processing Date : Apr 27 2012

Contents

1	Front	2
2	OBI	3
2.1	OBI	3
2.1.1	Images	3
2.1.2	Bias	3
2.1.3	Parameters	4
2.1.4	Events	4
2.2	Compared Parameters	5
2.3	Star Slots	6
2.4	FID Slots	6
A	Summary	7
A.1	Status	7
A.2	Comments	7

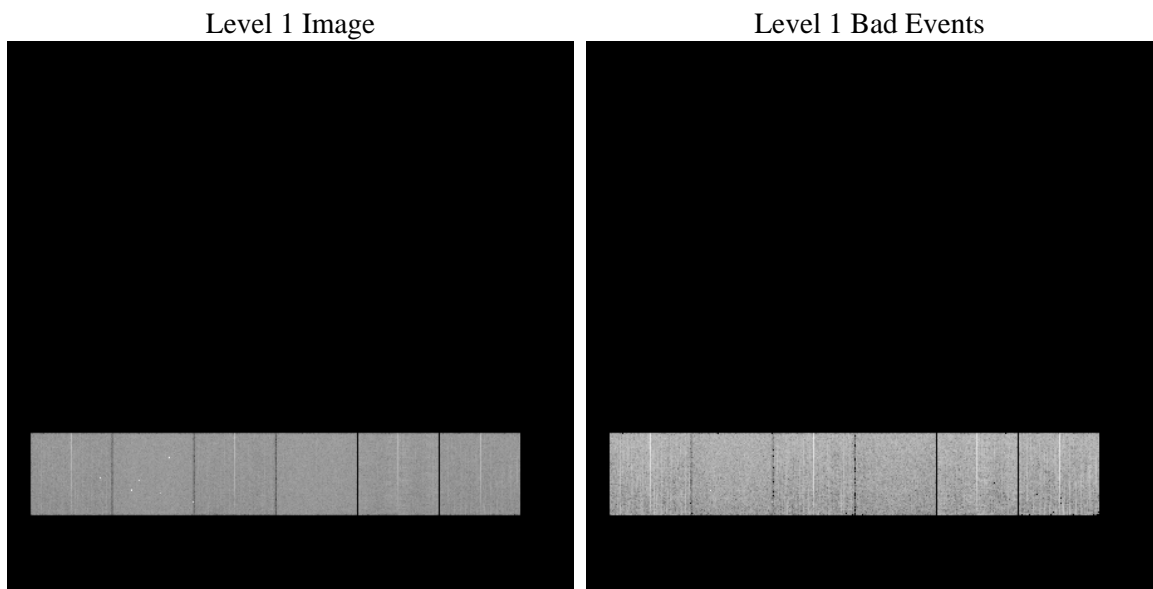
1 Front

seq_num	 	Sequence number
obs_id	58326	Observation id
title	ACIS-456789 diagnostics	Proposal title
observer	CHANDRA engineering request/realtime commanding	Principal investig
object	 	Source name
dtcycle	0	
cycle	P	events from which exps? Prim/Second/Both
ra_targ	0.0	Observer's specified target RA [deg]
dec_targ	0.0	Observer's specified target Dec [deg]
ra_nom	281.97806692353	Nominal RA [deg]
dec_nom	6.981298287154	Nominal Dec [deg]
roll_nom	187.7157681468	Nominal Roll [deg]
revision	2	Processing version of data
ontime	5779.1999785304	Sum of GTIs [s]
livetime	5706.0202685858	Livetime [s]
ontime4	5779.1999785304	Sum of GTIs [s]
ontime5	5779.1999785304	Sum of GTIs [s]
ontime6	5779.1999785304	Sum of GTIs [s]
ontime7	5779.1999785304	Sum of GTIs [s]
ontime8	5779.198307395	Sum of GTIs [s]
ontime9	5779.1999785304	Sum of GTIs [s]
l2events	516723	Number of level 2 events

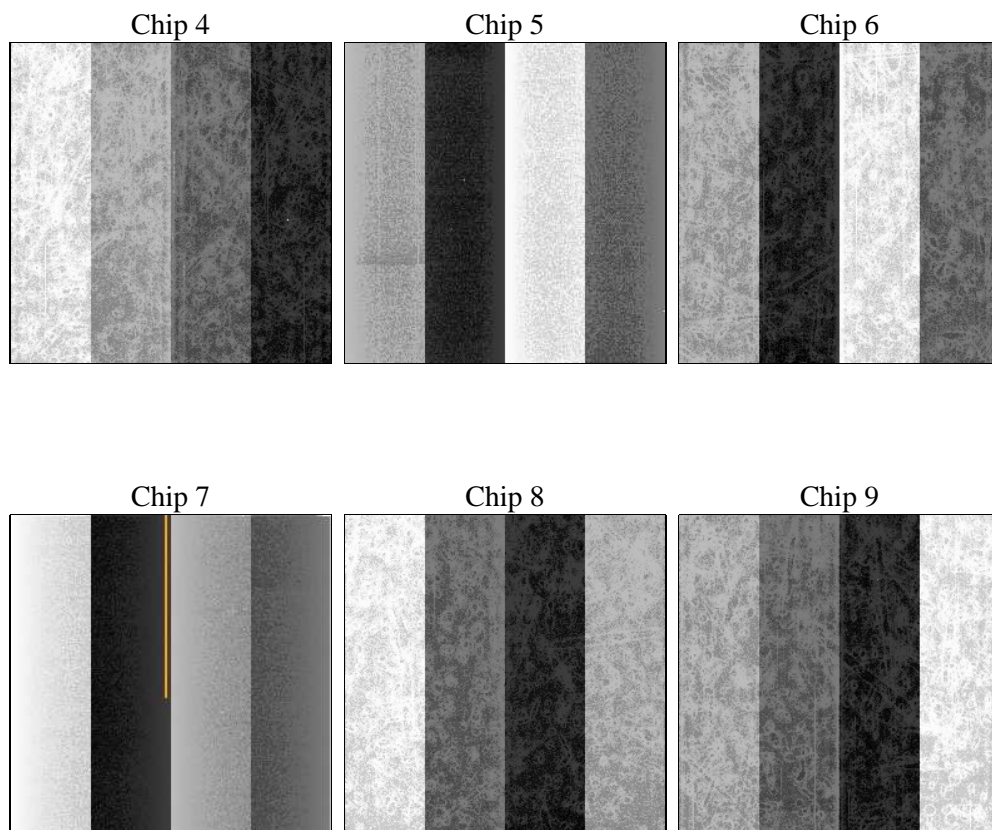
2 OBI

2.1 OBI

2.1.1 Images



2.1.2 Bias



2.1.3 Parameters

obi_num	0	Obi number	sched_exp_time	0.0	[s] Scheduled observation exposure time
ascdsver	8.4.4	Processing system revision	ontime	5779.1999785304	Sum of GTIs [s]
caldsver	4.4.9	 	ontime4	5779.1999785304	Sum of GTIs [s]
date	2012-04-27T15:29:51	Date and time of file creation	ontime5	5779.1999785304	Sum of GTIs [s]
revision	2	Processing version of data	ontime6	5779.1999785304	Sum of GTIs [s]
			ontime7	5779.1999785304	Sum of GTIs [s]
			ontime8	5779.198307395	Sum of GTIs [s]
			ontime9	5779.1999785304	Sum of GTIs [s]
			l1events	882160	Number of level 1 events

2.1.4 Events

	ccd 4	ccd 5	ccd 6	ccd 7	ccd 8	ccd 9		ccd 4	ccd 5	ccd 6	ccd 7	ccd 8	ccd 9
level 1 events	139533	154912	141485	153506	152503	140221	grade 0 events	47343	20103	46593	22789	49457	45258
rejected events	58006	49388	54614	45741	57023	56360		33%	12%	32%	14%	32%	32%
rejected %	41%	31%	38%	29%	37%	40%	grade 1 events	436	428	291	107	330	335
								0%	0%	0%	0%	0%	0%
							grade 2 events	12618	37442	15278	23688	17072	14747
								9%	24%	10%	15%	11%	10%
							grade 3 events	5625	5107	5462	10349	6851	5591
								4%	3%	3%	6%	4%	3%
							grade 4 events	5598	5191	5589	10294	6590	5521
								4%	3%	3%	6%	4%	3%
							grade 5 events	2887	6867	3014	7683	3894	3456
								2%	4%	2%	5%	2%	2%
							grade 6 events	10371	37729	13998	40723	15574	12790
								7%	24%	9%	26%	10%	9%
							grade 7 events	54655	42045	51260	37873	52735	52523
								39%	27%	36%	24%	34%	37%

2.2 Compared Parameters

Parameter	Planned	Actual	Parameter	Planned	Actual
Instrument	ACIS	ACIS	Obspar format version number	7	7
Detector	ACIS-456789	ACIS-456789	Obspar file type	PREDICTED	ACTUAL
Grating	NONE	NONE	Obspar update status	NONE	UPDATED
Data mode	FAINT	FAINT	On-chip summing requested	N	N
Observation mode	SECONDARY	SECONDARY	Subarray requested	NONE	NONE
[deg] Pointing RA	0	281.9780669235308	Alternating exposures requested	N	N
[deg] Pointing Dec	0	6.981298287153978	[s] Primary exposure time	3.2	3.2
[deg] Pointing Roll	0.0	187.7157681467968			
[mm] SIM focus pos	-0.684267	-0.6828225247311905			
[mm] SIM defocus	0	0.8505141146731063			
[mm] SIM translation stage pos	-190.132523	250.4635187648994			
[mm] SIM translation stage offset	0	-0.007540371344731511			
[s] Observation start time (MET)	300192222.976481	300192221.95148			
Observation start date	2007-07-07T10:43:43	2007-07-07T10:43:41			
[s] Observation end time (MET)	300208930.477281	300208929.45228			
Observation end date	2007-07-07T15:22:10	2007-07-07T15:22:09			
Read mode	TIMED	TIMED			

2.3 Star Slots

2.4 FID Slots

A Summary

A.1 Status

V&V Scientist	Joy Nichols
V&V Date (YYYY-MM-DD)	2012.04.27
V&V Edition	1
V&V Disposition and Status	OK
V&V Charge Time	5.7791999785304

A.2 Comments