

V&V Reference Report

L2 ASCDS Version : 8.4.4

Observation 58319 - L2 Version 2
Chandra X-Ray Center

L2 Processing Date : Apr 27 2012

Contents

1	Front	2
2	OBI	3
2.1	OBI	3
2.1.1	Images	3
2.1.2	Bias	3
2.1.3	Parameters	4
2.1.4	Events	4
2.2	Compared Parameters	5
2.3	Star Slots	6
2.4	FID Slots	6
A	Summary	7
A.1	Status	7
A.2	Comments	7

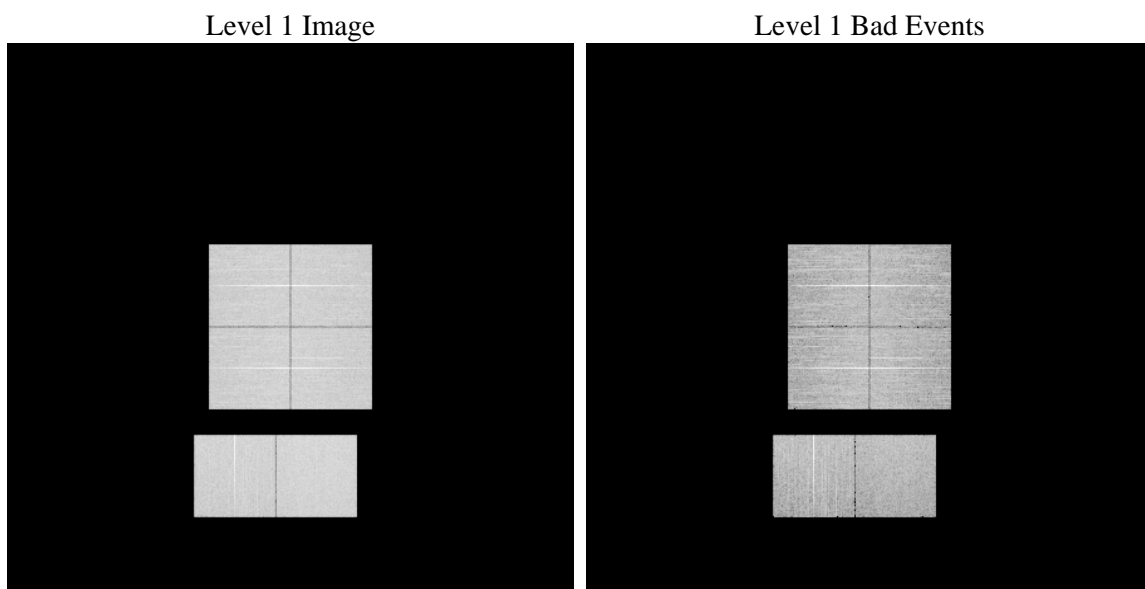
1 Front

seq_num	 	Sequence number
obs_id	58319	Observation id
title	ACIS-012367 diagnostics	Proposal title
observer	CHANDRA engineering request/realtime commanding	Principal investig
object	 	Source name
dtcycle	0	
cycle	P	events from which exps? Prim/Second/Both
ra_targ	0.0	Observer's specified target RA [deg]
dec_targ	0.0	Observer's specified target Dec [deg]
ra_nom	292.37422442336	Nominal RA [deg]
dec_nom	8.1868195741117	Nominal Dec [deg]
roll_nom	174.45130824749	Nominal Roll [deg]
revision	2	Processing version of data
ontime	8278.3999692202	Sum of GTIs [s]
livetime	8173.5738841559	Livetime [s]
ontime0	8278.3999692202	Sum of GTIs [s]
ontime1	8278.3999692202	Sum of GTIs [s]
ontime2	8278.3999692202	Sum of GTIs [s]
ontime3	8278.3999692202	Sum of GTIs [s]
ontime6	8278.3999692202	Sum of GTIs [s]
ontime7	8278.3999692202	Sum of GTIs [s]
l2events	714916	Number of level 2 events

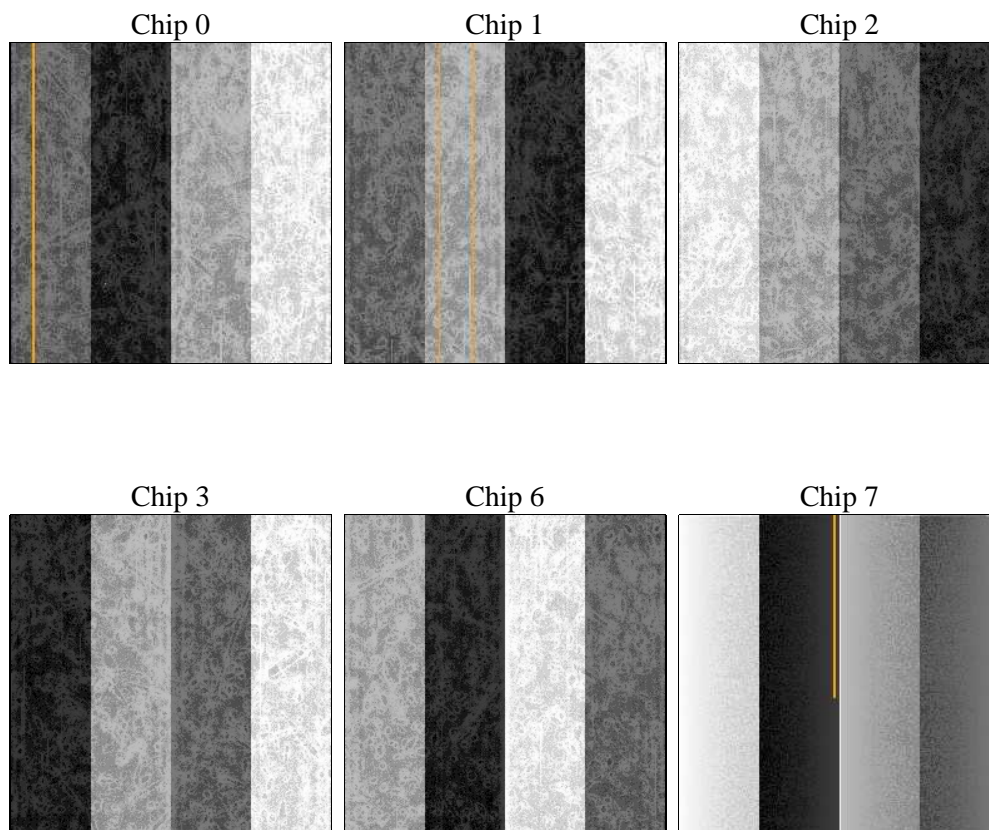
2 OBI

2.1 OBI

2.1.1 Images



2.1.2 Bias



2.1.3 Parameters

obi_num	0	Obi number	sched_exp_time	0.0	[s] Scheduled observation exposure time
ascdsver	8.4.4	Processing system revision	ontime	8278.3999692202	Sum of GTIs [s]
caldsver	4.4.9	 	ontime0	8278.3999692202	Sum of GTIs [s]
date	2012-04-28T01:04:03	Date and time of file creation	ontime1	8278.3999692202	Sum of GTIs [s]
revision	2	Processing version of data	ontime2	8278.3999692202	Sum of GTIs [s]
			ontime3	8278.3999692202	Sum of GTIs [s]
			ontime6	8278.3999692202	Sum of GTIs [s]
			ontime7	8278.3999692202	Sum of GTIs [s]
			l1events	1196336	Number of level 1 events

2.1.4 Events

	ccd 0	ccd 1	ccd 2	ccd 3	ccd 6	ccd 7		ccd 0	ccd 1	ccd 2	ccd 3	ccd 6	ccd 7
level 1 events	194295	189559	196830	196352	199992	219308	grade 0 events	64391	63610	65824	66512	65625	31667
rejected events	75306	70378	78079	76345	76460	65771		33%	33%	33%	33%	32%	14%
rejected %	38%	37%	39%	38%	38%	29%	grade 1 events	433	368	533	487	430	158
								0%	0%	0%	0%	0%	0%
							grade 2 events	21095	21843	19793	20514	21884	33446
								10%	11%	10%	10%	10%	15%
							grade 3 events	8027	7691	7975	7842	7780	14527
								4%	4%	4%	3%	3%	6%
							grade 4 events	7804	7761	8075	8067	7866	14518
								4%	4%	4%	4%	3%	6%
							grade 5 events	3985	4121	3647	4401	4227	11034
								2%	2%	1%	2%	2%	5%
							grade 6 events	17672	18276	17084	17116	20377	59379
								9%	9%	8%	8%	10%	27%
							grade 7 events	70888	65889	73899	71413	71803	54579
								36%	34%	37%	36%	35%	24%

2.2 Compared Parameters

Parameter	Planned	Actual
Instrument	ACIS	ACIS
Detector	ACIS-012367	ACIS-012367
Grating	NONE	NONE
Data mode	FAINT	FAINT
Observation mode	SECONDARY	SECONDARY
[deg] Pointing RA	0	292.3742244233632
[deg] Pointing Dec	0	8.186819574111691
[deg] Pointing Roll	0.0	174.451308247487
[mm] SIM focus pos	-0.782348	-0.7809083437167272
[mm] SIM defocus	0	0.7524282956875696
[mm] SIM translation stage pos	-233.592463	250.466033080201
[mm] SIM translation stage offset	0	-0.01005468664627074
[s] Observation start time (MET)	300457782.039189	300457781.0142
Observation start date	2007-07-10T12:29:42	2007-07-10T12:29:41
[s] Observation end time (MET)	300480912.190295	300480911.16531
Observation end date	2007-07-10T18:55:12	2007-07-10T18:55:11
Read mode	TIMED	TIMED

Parameter	Planned	Actual
Obspar format version number	7	7
Obspar file type	PREDICTED	ACTUAL
Obspar update status	NONE	UPDATED
On-chip summing requested	N	N
Subarray requested	NONE	NONE
Alternating exposures requested	N	N
[s] Primary exposure time	3.2	3.2

2.3 Star Slots

2.4 FID Slots

A Summary

A.1 Status

V&V Scientist	Jen Lauer
V&V Date (YYYY-MM-DD)	2012.04.30
V&V Edition	1
V&V Disposition and Status	OK
V&V Charge Time	8.2783999692202

A.2 Comments