

# V&V Reference Report

## L2 ASCDS Version : 8.4.4

Observation 58311 - L2 Version 2  
Chandra X-Ray Center

L2 Processing Date : Apr 28 2012

## Contents

<b>1</b>	<b>Front</b>	<b>2</b>
<b>2</b>	<b>OBI</b>	<b>3</b>
2.1	OBI . . . . .	3
2.1.1	Images . . . . .	3
2.1.2	Bias . . . . .	3
2.1.3	Parameters . . . . .	4
2.1.4	Events . . . . .	4
2.2	Compared Parameters . . . . .	5
2.3	Star Slots . . . . .	6
2.4	FID Slots . . . . .	6
<b>A</b>	<b>Summary</b>	<b>7</b>
A.1	Status . . . . .	7
A.2	Comments . . . . .	7

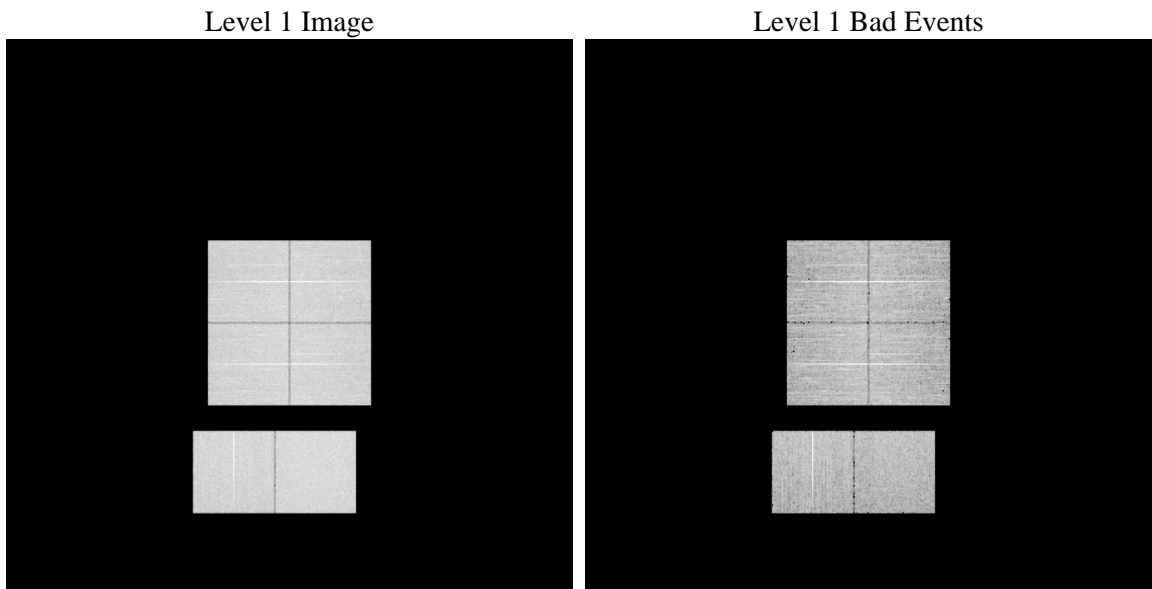
# 1 Front

seq_num	&#160	Sequence number
obs_id	58311	Observation id
title	ACIS-012367 diagnostics	Proposal title
observer	CHANDRA engineering request/realtime commanding	Principal investig
object	&#160	Source name
dtcycle	0	&#160
cycle	P	events from which exps? Prim/Second/Both
ra_targ	0.0	Observer's specified target RA [deg]
dec_targ	0.0	Observer's specified target Dec [deg]
ra_nom	291.9787410639	Nominal RA [deg]
dec_nom	6.4805405619472	Nominal Dec [deg]
roll_nom	189.76955383189	Nominal Roll [deg]
revision	2	Processing version of data
ontime	7797.8982838392	Sum of GTIs [s]
livetime	7699.1566004386	Livetime [s]
ontime0	7797.8982838392	Sum of GTIs [s]
ontime1	7797.8982639909	Sum of GTIs [s]
ontime2	7797.8982639909	Sum of GTIs [s]
ontime3	7797.8982838392	Sum of GTIs [s]
ontime6	7797.8578038812	Sum of GTIs [s]
ontime7	7797.8982838392	Sum of GTIs [s]
l2events	672902	Number of level 2 events

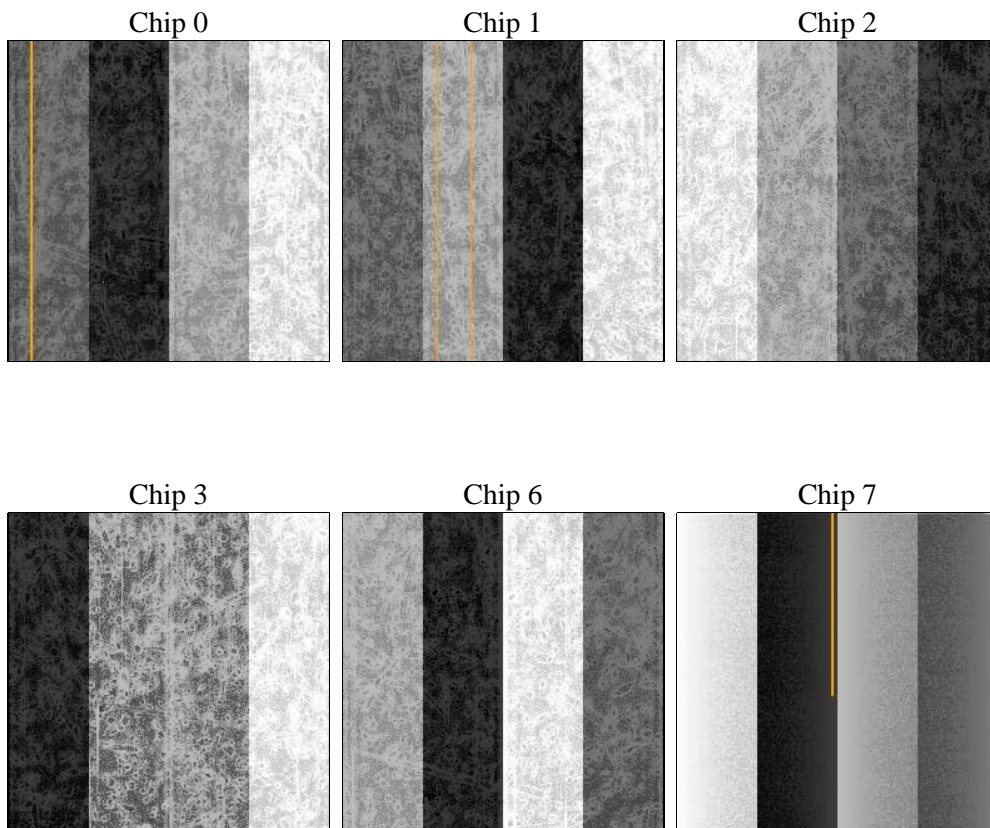
## 2 OBI

### 2.1 OBI

#### 2.1.1 Images



#### 2.1.2 Bias



### 2.1.3 Parameters

obi_num	0	Obi number	sched_exp_time	0.0	[s] Scheduled observation exposure time
ascdsver	8.4.4	Processing system revision	ontime	7797.8982838392	Sum of GTIs [s]
caldsver	4.4.9	&#160	ontime0	7797.8982838392	Sum of GTIs [s]
date	2012-04-28T03:37:31	Date and time of file creation	ontime1	7797.8982639909	Sum of GTIs [s]
revision	2	Processing version of data	ontime2	7797.8982639909	Sum of GTIs [s]
			ontime3	7797.8982838392	Sum of GTIs [s]
			ontime6	7797.8578038812	Sum of GTIs [s]
			ontime7	7797.8982838392	Sum of GTIs [s]
			l1events	1116471	Number of level 1 events

### 2.1.4 Events

	ccd 0	ccd 1	ccd 2	ccd 3	ccd 6	ccd 7		ccd 0	ccd 1	ccd 2	ccd 3	ccd 6	ccd 7
level 1 events	178859	177808	183648	182476	186901	206779	grade 0 events	60251	59743	61746	62318	62406	30517
rejected events	67273	65901	72153	69995	70230	61744		33%	33%	33%	34%	33%	14%
rejected %	37%	37%	39%	38%	37%	29%	grade 1 events	398	393	486	498	350	150
								0%	0%	0%	0%	0%	0%
							grade 2 events	19725	20677	18725	19267	20309	31502
								11%	11%	10%	10%	10%	15%
							grade 3 events	7592	7287	7600	7481	7620	14103
								4%	4%	4%	4%	4%	6%
							grade 4 events	7323	7151	7474	7492	7301	13731
								4%	4%	4%	4%	3%	6%
							grade 5 events	3699	3956	3492	4284	4082	10192
								2%	2%	1%	2%	2%	4%
							grade 6 events	16695	17049	15950	15923	19035	55182
								9%	9%	8%	8%	10%	26%
							grade 7 events	63176	61552	68175	65213	65798	51402
								35%	34%	37%	35%	35%	24%

## 2.2 Compared Parameters

Parameter	Planned	Actual	Parameter	Planned	Actual
Instrument	ACIS	ACIS	Obspar format version number	7	7
Detector	ACIS-012367	ACIS-012367	Obspar file type	PREDICTED	ACTUAL
Grating	NONE	NONE	Obspar update status	NONE	UPDATED
Data mode	FAINT	FAINT	On-chip summing requested	N	N
Observation mode	SECONDARY	SECONDARY	Subarray requested	NONE	NONE
[deg] Pointing RA	0	291.9787410638963	Alternating exposures requested	N	N
[deg] Pointing Dec	0	6.480540561947239	[s] Primary exposure time	3.2	3.2
[deg] Pointing Roll	0.0	189.7695538318858			
[mm] SIM focus pos	-0.782348	-0.6828225247311905			
[mm] SIM defocus	0	0.8505141146731063			
[mm] SIM translation stage pos	-233.592463	250.466033080201			
[mm] SIM translation stage offset	0	-0.01005468664627074			
[s] Observation start time (MET)	301106133.520266	301106132.49526			
Observation start date	2007-07-18T00:35:34	2007-07-18T00:35:32			
[s] Observation end time (MET)	301145075.322133	301145074.29712			
Observation end date	2007-07-18T11:24:35	2007-07-18T11:24:34			
Read mode	TIMED	TIMED			

## **2.3 Star Slots**

## **2.4 FID Slots**

## A Summary

### A.1 Status

V&V Scientist	Jen Lauer
V&V Date (YYYY-MM-DD)	2012.04.30
V&V Edition	1
V&V Disposition and Status	OK
V&V Charge Time	7.7978982838392

### A.2 Comments