

V&V Reference Report

L2 ASCDS Version : 8.4.4

Observation 58208 - L2 Version 2
Chandra X-Ray Center

L2 Processing Date : May 1 2012

Contents

1	Front	2
2	OBI	3
2.1	OBI	3
2.1.1	Images	3
2.1.2	Bias	3
2.1.3	Parameters	4
2.1.4	Events	4
2.2	Compared Parameters	5
2.3	Star Slots	6
2.4	FID Slots	6
A	Summary	7
A.1	Status	7
A.2	Comments	7

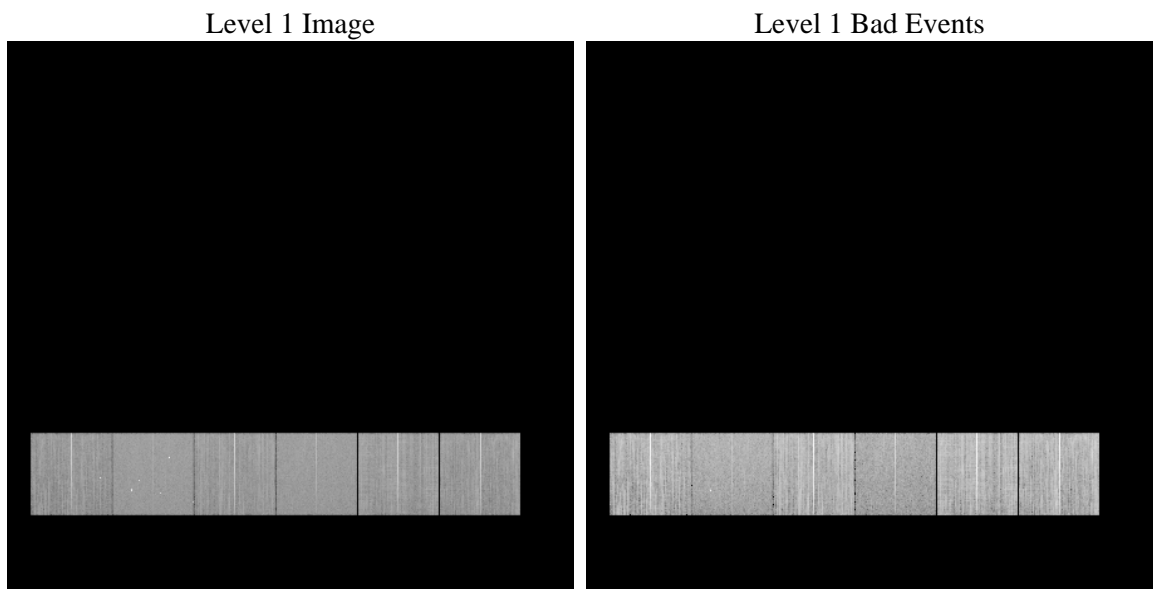
1 Front

seq_num	 	Sequence number
obs_id	58208	Observation id
title	ACIS-456789 diagnostics	Proposal title
observer	CHANDRA engineering request/realtime commanding	Principal investig
object	 	Source name
dtcycle	0	
cycle	P	events from which exps? Prim/Second/Both
ra_targ	0.0	Observer's specified target RA [deg]
dec_targ	0.0	Observer's specified target Dec [deg]
ra_nom	16.974511850953	Nominal RA [deg]
dec_nom	15.011908761464	Nominal Dec [deg]
roll_nom	125.85589775973	Nominal Roll [deg]
revision	2	Processing version of data
ontime	7791.3050187826	Sum of GTIs [s]
livetime	7692.6468232741	Livetime [s]
ontime4	5749.5727442503	Sum of GTIs [s]
ontime5	7791.3460587859	Sum of GTIs [s]
ontime6	6258.3988365531	Sum of GTIs [s]
ontime7	7791.3050187826	Sum of GTIs [s]
ontime8	6485.8085631728	Sum of GTIs [s]
ontime9	6067.0572084188	Sum of GTIs [s]
l2events	604967	Number of level 2 events

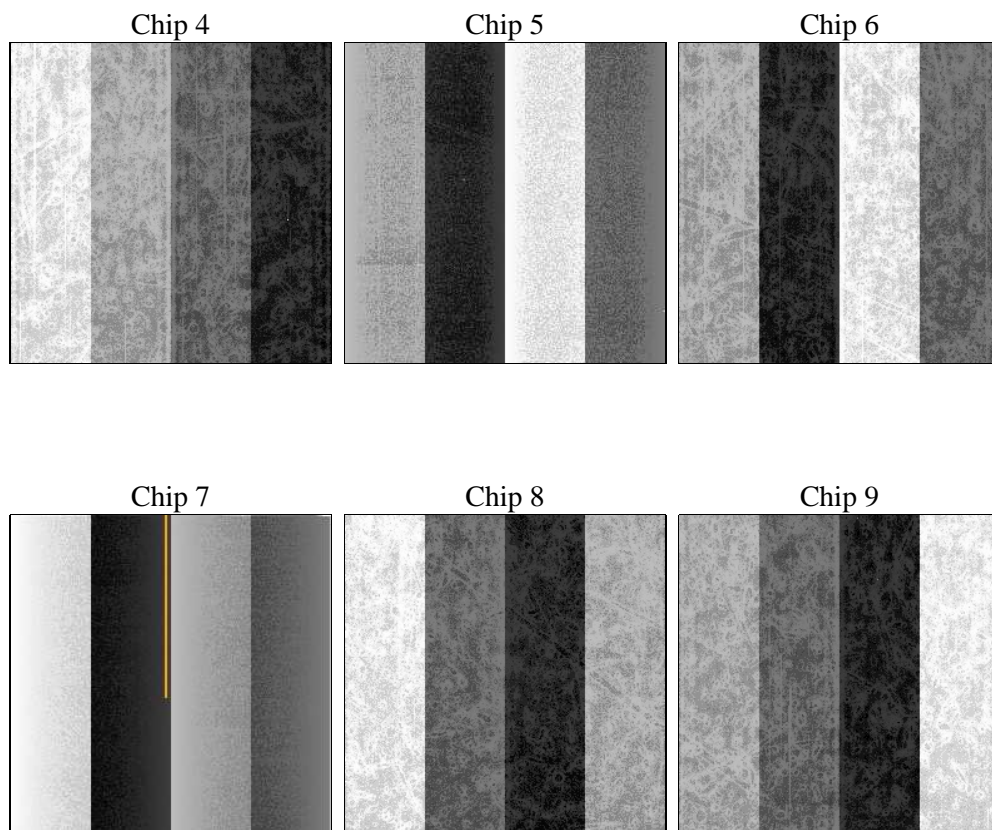
2 OBI

2.1 OBI

2.1.1 Images



2.1.2 Bias



2.1.3 Parameters

obi_num	0	Obi number	sched_exp_time	0.0	[s] Scheduled observation exposure time
ascdsver	8.4.4	Processing system revision	ontime	7791.3050187826	Sum of GTIs [s]
caldsver	4.4.9	 	ontime4	5749.5727442503	Sum of GTIs [s]
date	2012-05-01T07:17:24	Date and time of file creation	ontime5	7791.3460587859	Sum of GTIs [s]
revision	2	Processing version of data	ontime6	6258.3988365531	Sum of GTIs [s]
			ontime7	7791.3050187826	Sum of GTIs [s]
			ontime8	6485.8085631728	Sum of GTIs [s]
			ontime9	6067.0572084188	Sum of GTIs [s]
			l1events	1406506	Number of level 1 events

2.1.4 Events

	ccd 4	ccd 5	ccd 6	ccd 7	ccd 8	ccd 9		ccd 4	ccd 5	ccd 6	ccd 7	ccd 8	ccd 9
level 1 events	208681	240706	237334	232927	256847	230011	grade 0 events	44920	26874	48013	29779	53389	45647
rejected events	128824	96271	146282	85863	152050	144749		21%	11%	20%	12%	20%	19%
rejected %	61%	39%	61%	36%	59%	62%	grade 1 events	451	563	286	170	376	311
								0%	0%	0%	0%	0%	0%
							grade 2 events	13977	53319	16755	35632	19371	15361
								6%	22%	7%	15%	7%	6%
							grade 3 events	5350	7016	5750	13848	7447	5608
								2%	2%	2%	5%	2%	2%
							grade 4 events	5378	7215	5789	13492	7328	5484
								2%	2%	2%	5%	2%	2%
							grade 5 events	3065	9396	3334	10389	4488	3552
								1%	3%	1%	4%	1%	1%
							grade 6 events	10232	50011	14745	54313	17303	13162
								4%	20%	6%	23%	6%	5%
							grade 7 events	125308	86312	142662	75304	147145	140886
								60%	35%	60%	32%	57%	61%

2.2 Compared Parameters

Parameter	Planned	Actual	Parameter	Planned	Actual
Instrument	ACIS	ACIS	Obspar format version number	7	7
Detector	ACIS-456789	ACIS-456789	Obspar file type	PREDICTED	ACTUAL
Grating	NONE	NONE	Obspar update status	NONE	UPDATED
Data mode	FAINT	FAINT	On-chip summing requested	N	N
Observation mode	SECONDARY	SECONDARY	Subarray requested	NONE	NONE
[deg] Pointing RA	0	16.97451185095278	Alternating exposures requested	N	N
[deg] Pointing Dec	0	15.01190876146446	[s] Primary exposure time	3.2	3.2
[deg] Pointing Roll	0.0	125.8558977597305			
[mm] SIM focus pos	-0.684267	-0.6828225247311905			
[mm] SIM defocus	0	0.8505141146731063			
[mm] SIM translation stage pos	-190.132523	250.466033080201			
[mm] SIM translation stage offset	0	-0.01005468664627074			
[s] Observation start time (MET)	306361817.172692	306361816.14768			
Observation start date	2007-09-16T20:30:17	2007-09-16T20:30:16			
[s] Observation end time (MET)	306371765.823171	306371764.79816			
Observation end date	2007-09-16T23:16:06	2007-09-16T23:16:04			
Read mode	TIMED	TIMED			

2.3 Star Slots

2.4 FID Slots

A Summary

A.1 Status

V&V Scientist	Beth Sundheim
V&V Date (YYYY-MM-DD)	2012.05.03
V&V Edition	1
V&V Disposition and Status	OK
V&V Charge Time	7.7913050187826

A.2 Comments