

# V&V Reference Report

## L2 ASCDS Version : 8.4.4

Observation 58193 - L2 Version 2  
Chandra X-Ray Center

L2 Processing Date : May 1 2012

## Contents

<b>1</b>	<b>Front</b>	<b>2</b>
<b>2</b>	<b>OBI</b>	<b>3</b>
2.1	OBI . . . . .	3
2.1.1	Images . . . . .	3
2.1.2	Bias . . . . .	3
2.1.3	Parameters . . . . .	4
2.1.4	Events . . . . .	4
2.2	Compared Parameters . . . . .	5
2.3	Star Slots . . . . .	6
2.4	FID Slots . . . . .	6
<b>A</b>	<b>Summary</b>	<b>7</b>
A.1	Status . . . . .	7
A.2	Comments . . . . .	7

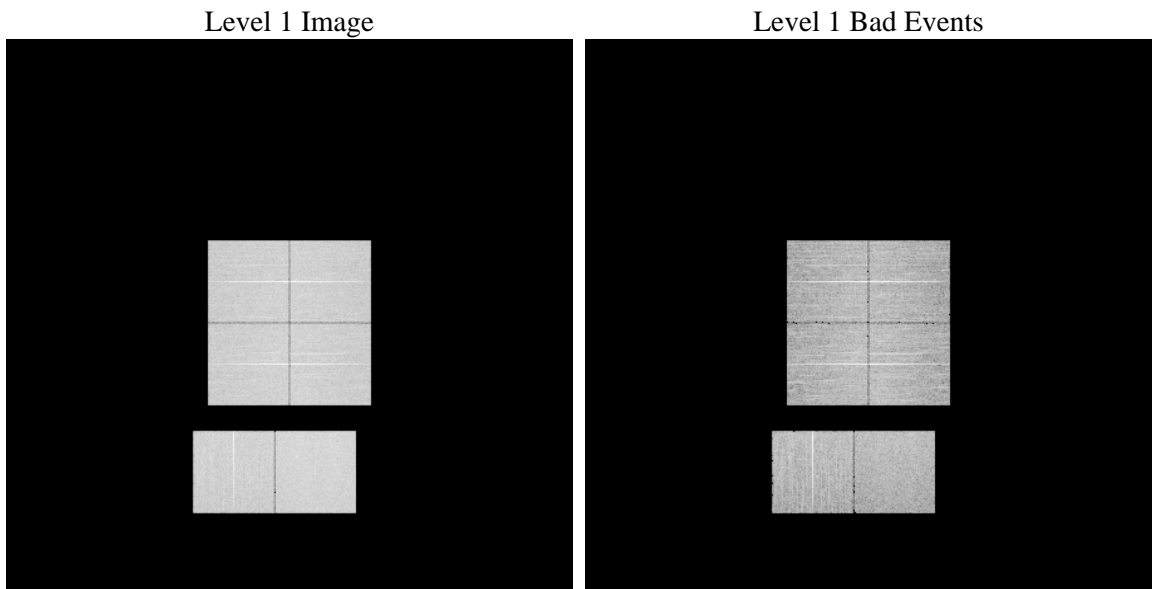
# 1 Front

seq_num	&#160	Sequence number
obs_id	58193	Observation id
title	ACIS-012367 diagnostics	Proposal title
observer	CHANDRA engineering request/realtime commanding	Principal investig
object	&#160	Source name
dtcycle	0	&#160
cycle	P	events from which exps? Prim/Second/Both
ra_targ	0.0	Observer's specified target RA [deg]
dec_targ	0.0	Observer's specified target Dec [deg]
ra_nom	346.02448129501	Nominal RA [deg]
dec_nom	-5.016367756703	Nominal Dec [deg]
roll_nom	289.68817690396	Nominal Roll [deg]
revision	2	Processing version of data
ontime	8258.5502090454	Sum of GTIs [s]
livetime	8153.9754735966	Livetime [s]
ontime0	8258.5091690421	Sum of GTIs [s]
ontime1	8258.4681290388	Sum of GTIs [s]
ontime2	8258.4270890355	Sum of GTIs [s]
ontime3	8258.5912490487	Sum of GTIs [s]
ontime6	8258.3860490322	Sum of GTIs [s]
ontime7	8258.5502090454	Sum of GTIs [s]
l2events	685489	Number of level 2 events

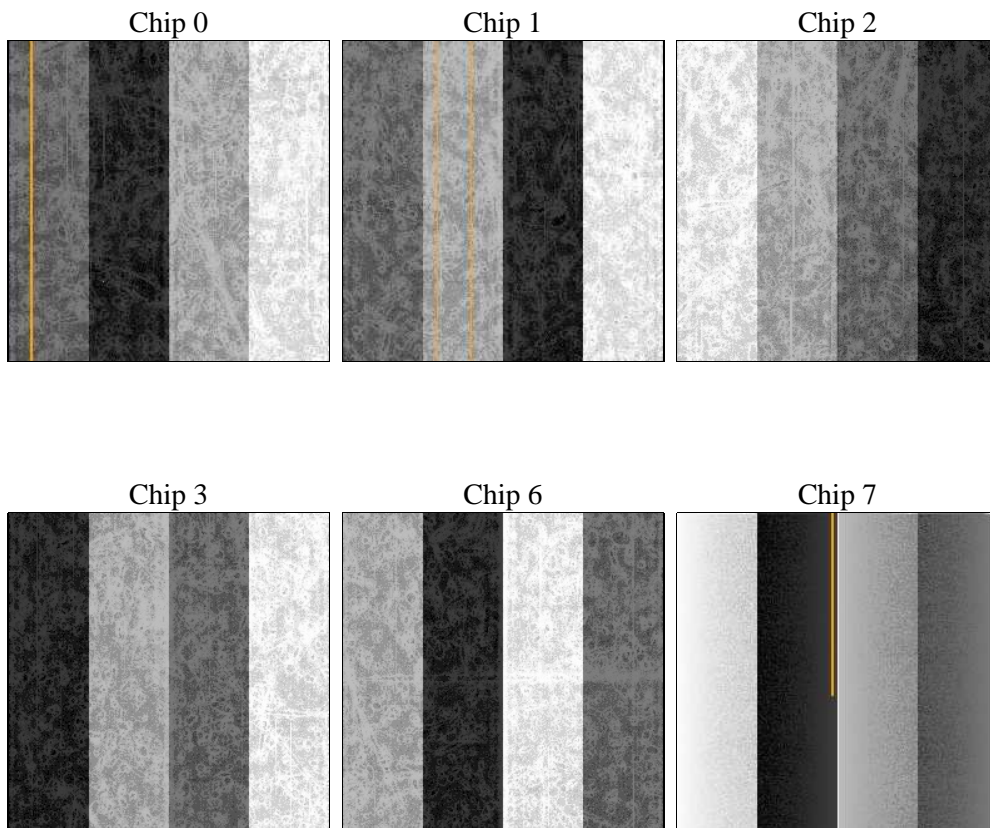
## 2 OBI

### 2.1 OBI

#### 2.1.1 Images



#### 2.1.2 Bias



### 2.1.3 Parameters

obi_num	1	Obi number	sched_exp_time	0.0	[s] Scheduled observation exposure time
ascdsver	8.4.4	Processing system revision	ontime	8258.5502090454	Sum of GTIs [s]
caldsver	4.4.9	&#160	ontime0	8258.5091690421	Sum of GTIs [s]
date	2012-05-01T22:07:24	Date and time of file creation	ontime1	8258.4681290388	Sum of GTIs [s]
revision	2	Processing version of data	ontime2	8258.4270890355	Sum of GTIs [s]
			ontime3	8258.5912490487	Sum of GTIs [s]
			ontime6	8258.3860490322	Sum of GTIs [s]
			ontime7	8258.5502090454	Sum of GTIs [s]
			l1events	1143697	Number of level 1 events

### 2.1.4 Events

	ccd 0	ccd 1	ccd 2	ccd 3	ccd 6	ccd 7		ccd 0	ccd 1	ccd 2	ccd 3	ccd 6	ccd 7
level 1 events	181925	181593	186774	187894	191153	214358	grade 0 events	60890	61364	63009	63476	62451	31111
rejected events	69010	67166	72774	73196	73305	65311		33%	33%	33%	33%	32%	14%
rejected %	37%	36%	38%	38%	38%	30%	grade 1 events	471	404	513	450	381	171
								0%	0%	0%	0%	0%	0%
							grade 2 events	20061	20933	19467	19815	21033	32167
								11%	11%	10%	10%	11%	15%
							grade 3 events	7543	7376	7636	7580	7685	14262
								4%	4%	4%	4%	4%	6%
							grade 4 events	7483	7510	7634	7573	7560	14225
								4%	4%	4%	4%	3%	6%
							grade 5 events	3912	4055	3799	4366	4308	10899
								2%	2%	2%	2%	2%	5%
							grade 6 events	17185	17456	16463	16463	19368	57558
								9%	9%	8%	8%	10%	26%
							grade 7 events	64380	62495	68253	68171	68367	53965
								35%	34%	36%	36%	35%	25%

## 2.2 Compared Parameters

Parameter	Planned	Actual
Instrument	ACIS	ACIS
Detector	ACIS-012367	ACIS-012367
Grating	NONE	NONE
Data mode	FAINT	FAINT
Observation mode	SECONDARY	SECONDARY
[deg] Pointing RA	0	346.0244812950117
[deg] Pointing Dec	0	-5.01636775670303
[deg] Pointing Roll	0.0	289.688176903957
[mm] SIM focus pos	-0.782348	-0.6828225247311905
[mm] SIM defocus	0	0.8505141146731063
[mm] SIM translation stage pos	-233.592463	250.466033080201
[mm] SIM translation stage offset	0	-0.01005468664627074
[s] Observation start time (MET)	307087978.457651	307087977.43266
Observation start date	2007-09-25T06:12:58	2007-09-25T06:12:57
[s] Observation end time (MET)	307106902.008563	307106900.98357
Observation end date	2007-09-25T11:28:22	2007-09-25T11:28:20
Read mode	TIMED	TIMED

Parameter	Planned	Actual
Obspar format version number	7	7
Obspar file type	PREDICTED	ACTUAL
Obspar update status	NONE	UPDATED
On-chip summing requested	N	N
Subarray requested	NONE	NONE
Alternating exposures requested	N	N
[s] Primary exposure time	3.2	3.2

## **2.3 Star Slots**

## **2.4 FID Slots**

## A Summary

### A.1 Status

V&V Scientist	Beth Sundheim
V&V Date (YYYY-MM-DD)	2012.05.04
V&V Edition	1
V&V Disposition and Status	OK
V&V Charge Time	8.2585502090454

### A.2 Comments