

V&V Reference Report

L2 ASCDS Version : 8.4.4

Observation 58177 - L2 Version 2
Chandra X-Ray Center

L2 Processing Date : May 2 2012

Contents

1	Front	2
2	OBI	3
2.1	OBI	3
2.1.1	Images	3
2.1.2	Bias	3
2.1.3	Parameters	4
2.1.4	Events	4
2.2	Compared Parameters	5
2.3	Star Slots	6
2.4	FID Slots	6
A	Summary	7
A.1	Status	7
A.2	Comments	7

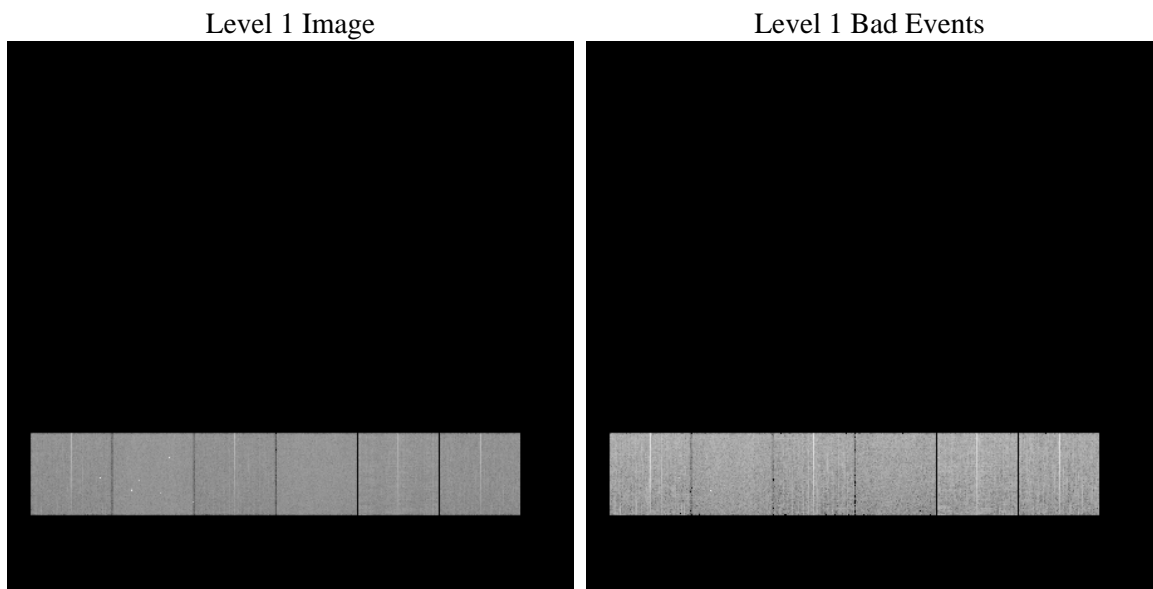
1 Front

seq_num	 	Sequence number
obs_id	58177	Observation id
title	ACIS-456789 diagnostics	Proposal title
observer	CHANDRA engineering request/realtime commanding	Principal investig
object	 	Source name
dtcycle	0	
cycle	P	events from which exps? Prim/Second/Both
ra_targ	0.0	Observer's specified target RA [deg]
dec_targ	0.0	Observer's specified target Dec [deg]
ra_nom	139.98135775013	Nominal RA [deg]
dec_nom	-14.97766918355	Nominal Dec [deg]
roll_nom	96.035020571504	Nominal Roll [deg]
revision	2	Processing version of data
ontime	6834.64191401	Sum of GTIs [s]
livetime	6748.0975627676	Livetime [s]
ontime4	6834.5187940001	Sum of GTIs [s]
ontime5	6834.6008740067	Sum of GTIs [s]
ontime6	6834.5598340034	Sum of GTIs [s]
ontime7	6834.64191401	Sum of GTIs [s]
ontime8	6834.4777539968	Sum of GTIs [s]
ontime9	6834.6829540133	Sum of GTIs [s]
l2events	591043	Number of level 2 events

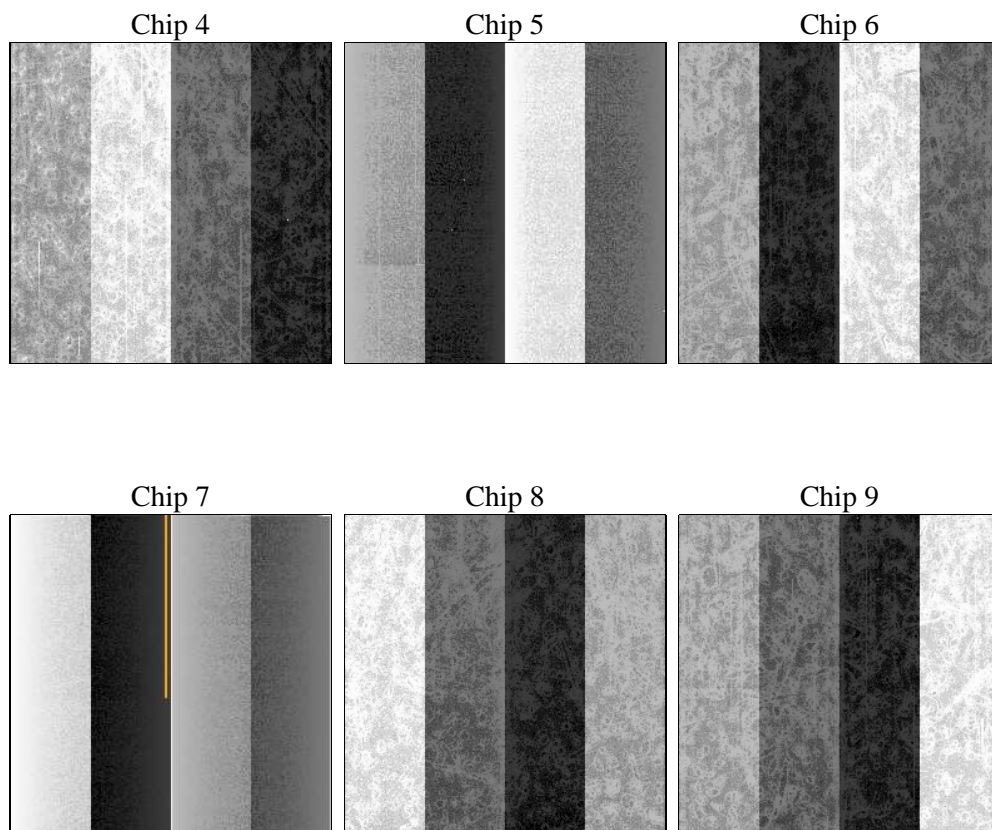
2 OBI

2.1 OBI

2.1.1 Images



2.1.2 Bias



2.1.3 Parameters

obi_num	0	Obi number	sched_exp_time	0.0	[s] Scheduled observation exposure time
ascdsver	8.4.4	Processing system revision	ontime	6834.64191401	Sum of GTIs [s]
caldsver	4.4.9	 	ontime4	6834.5187940001	Sum of GTIs [s]
date	2012-05-02T10:45:43	Date and time of file creation	ontime5	6834.6008740067	Sum of GTIs [s]
revision	2	Processing version of data	ontime6	6834.5598340034	Sum of GTIs [s]
			ontime7	6834.64191401	Sum of GTIs [s]
			ontime8	6834.4777539968	Sum of GTIs [s]
			ontime9	6834.6829540133	Sum of GTIs [s]
			l1events	1015562	Number of level 1 events

2.1.4 Events

	ccd 4	ccd 5	ccd 6	ccd 7	ccd 8	ccd 9		ccd 4	ccd 5	ccd 6	ccd 7	ccd 8	ccd 9
level 1 events	160678	179827	158897	176637	179093	160430	grade 0 events	53592	20896	52083	25463	56092	51474
rejected events	67705	58893	61003	53598	69999	65167		33%	11%	32%	14%	31%	32%
rejected %	42%	32%	38%	30%	39%	40%	grade 1 events	537	170	320	165	363	356
								0%	0%	0%	0%	0%	0%
							grade 2 events	14693	43613	17049	26588	19608	16258
								9%	24%	10%	15%	10%	10%
							grade 3 events	6433	5999	6314	12003	7608	6194
								4%	3%	3%	6%	4%	3%
							grade 4 events	6225	5943	6231	11529	7588	6442
								3%	3%	3%	6%	4%	4%
							grade 5 events	3530	8365	3558	9024	4714	4108
								2%	4%	2%	5%	2%	2%
							grade 6 events	12030	44483	16217	47456	18198	14895
								7%	24%	10%	26%	10%	9%
							grade 7 events	63638	50358	57125	44409	64922	60703
								39%	28%	35%	25%	36%	37%

2.2 Compared Parameters

Parameter	Planned	Actual
Instrument	ACIS	ACIS
Detector	ACIS-456789	ACIS-456789
Grating	NONE	NONE
Data mode	FAINT	FAINT
Observation mode	SECONDARY	SECONDARY
[deg] Pointing RA	0	139.9813577501257
[deg] Pointing Dec	0	-14.97766918354982
[deg] Pointing Roll	0.0	96.03502057150365
[mm] SIM focus pos	-0.684267	-0.7809083437167272
[mm] SIM defocus	0	0.7524282956875696
[mm] SIM translation stage pos	-190.132523	250.4635187648994
[mm] SIM translation stage offset	0	-0.007540371344731511
[s] Observation start time (MET)	308001454.401679	308001453.37667
Observation start date	2007-10-05T19:57:34	2007-10-05T19:57:33
[s] Observation end time (MET)	308022606.302698	308022605.27769
Observation end date	2007-10-06T01:50:06	2007-10-06T01:50:05
Read mode	TIMED	TIMED

Parameter	Planned	Actual
Obspar format version number	7	7
Obspar file type	PREDICTED	ACTUAL
Obspar update status	NONE	UPDATED
On-chip summing requested	N	N
Subarray requested	NONE	NONE
Alternating exposures requested	N	N
[s] Primary exposure time	3.2	3.2

2.3 Star Slots

2.4 FID Slots

A Summary

A.1 Status

V&V Scientist	Jen Lauer
V&V Date (YYYY-MM-DD)	2012.05.04
V&V Edition	1
V&V Disposition and Status	OK
V&V Charge Time	6.83464191401

A.2 Comments