

# V&V Reference Report

## L2 ASCDS Version : 8.4.4

Observation 58149 - L2 Version 2  
Chandra X-Ray Center

L2 Processing Date : May 3 2012

## Contents

<b>1</b>	<b>Front</b>	<b>2</b>
<b>2</b>	<b>OBI</b>	<b>3</b>
2.1	OBI . . . . .	3
2.1.1	Images . . . . .	3
2.1.2	Bias . . . . .	3
2.1.3	Parameters . . . . .	4
2.1.4	Events . . . . .	4
2.2	Compared Parameters . . . . .	5
2.3	Star Slots . . . . .	6
2.4	FID Slots . . . . .	6
<b>A</b>	<b>Summary</b>	<b>7</b>
A.1	Status . . . . .	7
A.2	Comments . . . . .	7

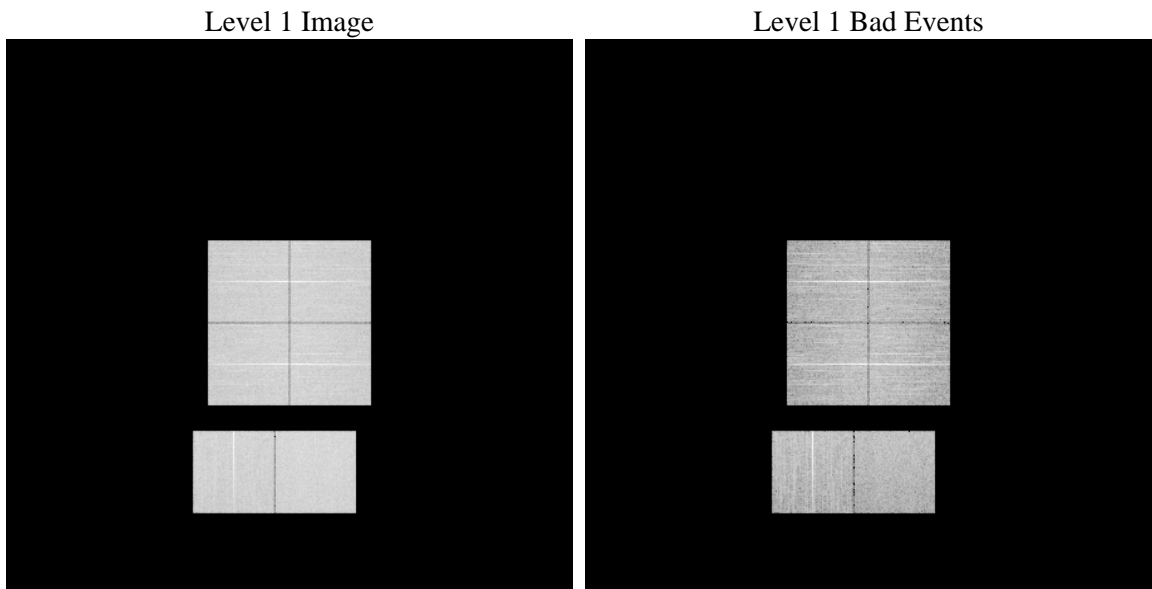
# 1 Front

seq_num	&#160	Sequence number
obs_id	58149	Observation id
title	ACIS-012367 diagnostics	Proposal title
observer	CHANDRA engineering request/realtime commanding	Principal investig
object	&#160	Source name
dtcycle	0	&#160
cycle	P	events from which exps? Prim/Second/Both
ra_targ	0.0	Observer's specified target RA [deg]
dec_targ	0.0	Observer's specified target Dec [deg]
ra_nom	65.98048622374	Nominal RA [deg]
dec_nom	20.022091054673	Nominal Dec [deg]
roll_nom	96.846686641328	Nominal Roll [deg]
revision	2	Processing version of data
ontime	8246.3873926401	Sum of GTIs [s]
livetime	8141.9666700961	Livetime [s]
ontime0	8246.3463526368	Sum of GTIs [s]
ontime1	8246.3053126335	Sum of GTIs [s]
ontime2	8246.2642726302	Sum of GTIs [s]
ontime3	8246.3999693394	Sum of GTIs [s]
ontime6	8246.2232326269	Sum of GTIs [s]
ontime7	8246.3873926401	Sum of GTIs [s]
l2events	674469	Number of level 2 events

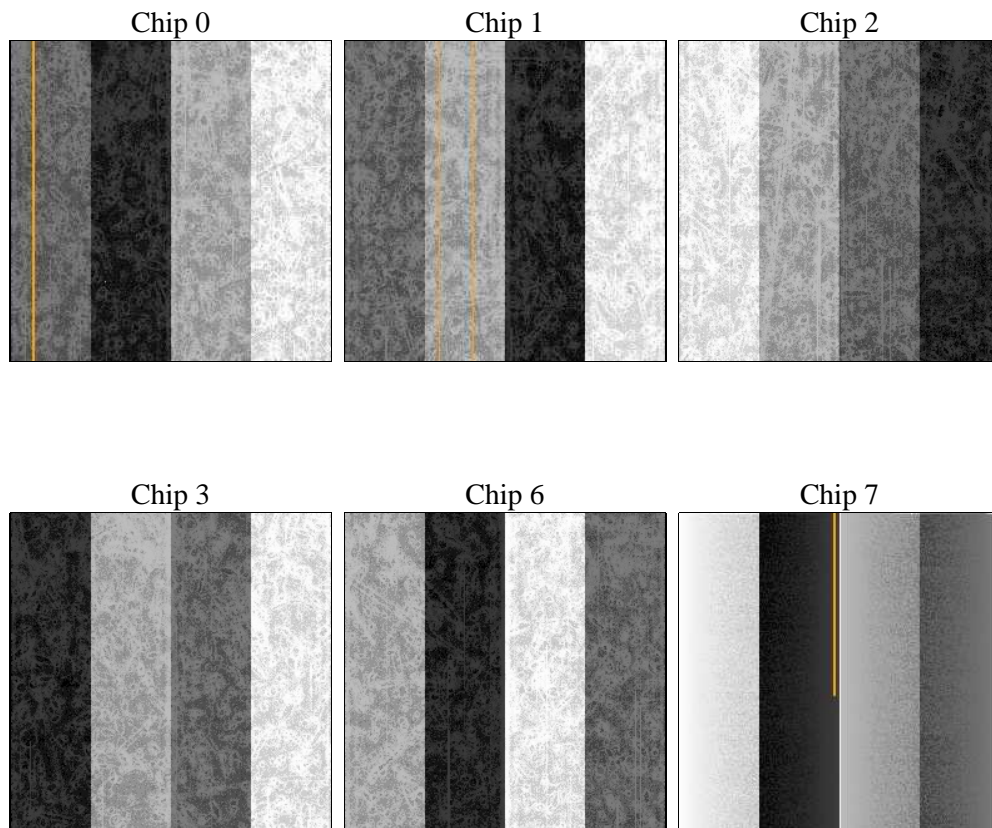
## 2 OBI

### 2.1 OBI

#### 2.1.1 Images



#### 2.1.2 Bias



### 2.1.3 Parameters

obi_num	0	Obi number	sched_exp_time	0.0	[s] Scheduled observation exposure time
ascdsver	8.4.4	Processing system revision	ontime	8246.3873926401	Sum of GTIs [s]
caldsver	4.4.9	&#160	ontime0	8246.3463526368	Sum of GTIs [s]
date	2012-05-03T17:02:49	Date and time of file creation	ontime1	8246.3053126335	Sum of GTIs [s]
revision	2	Processing version of data	ontime2	8246.2642726302	Sum of GTIs [s]
			ontime3	8246.3999693394	Sum of GTIs [s]
			ontime6	8246.2232326269	Sum of GTIs [s]
			ontime7	8246.3873926401	Sum of GTIs [s]
			l1events	1144448	Number of level 1 events

### 2.1.4 Events

	ccd 0	ccd 1	ccd 2	ccd 3	ccd 6	ccd 7		ccd 0	ccd 1	ccd 2	ccd 3	ccd 6	ccd 7
level 1 events	181387	183533	186661	189790	191504	211573	grade 0 events	60305	59794	61480	62599	62075	30069
rejected events	70119	71104	74980	76745	74700	65362		33%	32%	32%	32%	32%	14%
rejected %	38%	38%	40%	40%	39%	30%	grade 1 events	428	389	458	526	405	155
								0%	0%	0%	0%	0%	0%
							grade 2 events	19815	21031	18896	19480	20571	32218
								10%	11%	10%	10%	10%	15%
							grade 3 events	7392	7227	7687	7591	7392	13608
								4%	3%	4%	3%	3%	6%
							grade 4 events	7434	7377	7398	7575	7595	13596
								4%	4%	3%	3%	3%	6%
							grade 5 events	3902	4023	3641	4232	4055	10553
								2%	2%	1%	2%	2%	4%
							grade 6 events	16690	17348	16546	16123	19575	57158
								9%	9%	8%	8%	10%	27%
							grade 7 events	65421	66344	70555	71664	69836	54216
								36%	36%	37%	37%	36%	25%

## 2.2 Compared Parameters

Parameter	Planned	Actual	Parameter	Planned	Actual
Instrument	ACIS	ACIS	Obspar format version number	7	7
Detector	ACIS-012367	ACIS-012367	Obspar file type	PREDICTED	ACTUAL
Grating	NONE	NONE	Obspar update status	NONE	UPDATED
Data mode	FAINT	FAINT	On-chip summing requested	N	N
Observation mode	SECONDARY	SECONDARY	Subarray requested	NONE	NONE
[deg] Pointing RA	0	65.98048622374014	Alternating exposures requested	N	N
[deg] Pointing Dec	0	20.02209105467268	[s] Primary exposure time	3.2	3.2
[deg] Pointing Roll	0.0	96.84668664132829			
[mm] SIM focus pos	-0.782348	-0.7809083437167272			
[mm] SIM defocus	0	0.7524282956875696			
[mm] SIM translation stage pos	-233.592463	250.466033080201			
[mm] SIM translation stage offset	0	-0.01005468664627074			
[s] Observation start time (MET)	310057559.400836	310057558.37581			
Observation start date	2007-10-29T15:05:59	2007-10-29T15:05:58			
[s] Observation end time (MET)	310079908.501916	310079907.47689			
Observation end date	2007-10-29T21:18:29	2007-10-29T21:18:27			
Read mode	TIMED	TIMED			

## 2.3 Star Slots

## 2.4 FID Slots

## A Summary

### A.1 Status

V&V Scientist	Beth Sundheim
V&V Date (YYYY-MM-DD)	2012.05.07
V&V Edition	1
V&V Disposition and Status	OK
V&V Charge Time	8.2463873926401

### A.2 Comments