

V&V Reference Report

L2 ASCDS Version : 8.4.4

Observation 58099 - L2 Version 2
Chandra X-Ray Center

L2 Processing Date : May 5 2012

Contents

1	Front	2
2	OBI	3
2.1	OBI	3
2.1.1	Images	3
2.1.2	Bias	3
2.1.3	Parameters	4
2.1.4	Events	4
2.2	Compared Parameters	5
2.3	Star Slots	6
2.4	FID Slots	6
A	Summary	7
A.1	Status	7
A.2	Comments	7

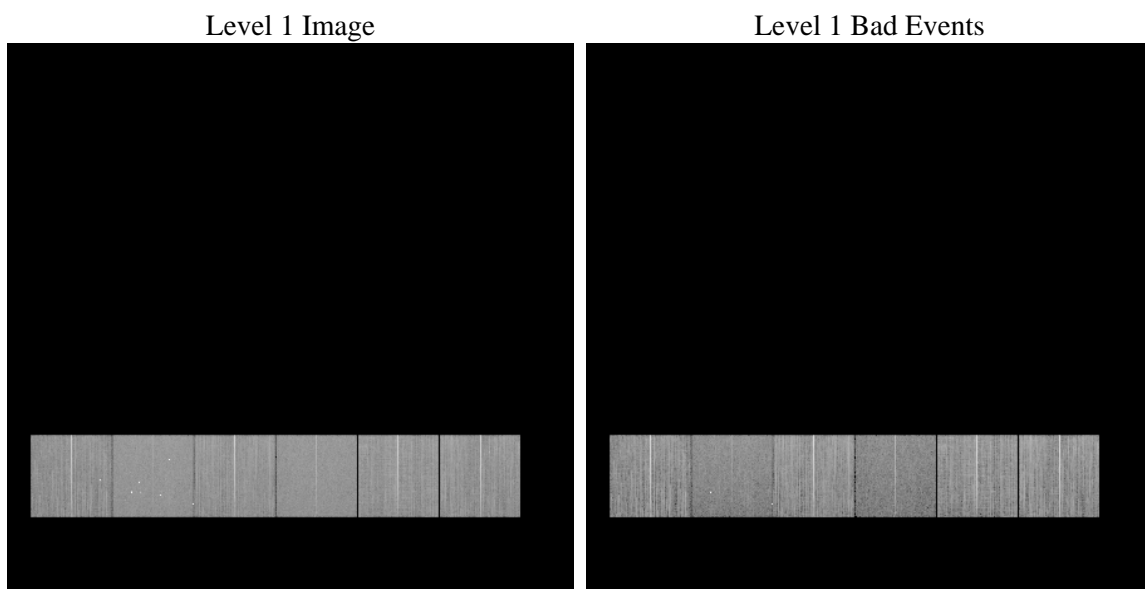
1 Front

seq_num	 	Sequence number
obs_id	58099	Observation id
title	ACIS-456789 diagnostics	Proposal title
observer	CHANDRA engineering request/realtime commanding	Principal investig
object	 	Source name
dtcycle	0	
cycle	P	events from which exps? Prim/Second/Both
ra_targ	0.0	Observer's specified target RA [deg]
dec_targ	0.0	Observer's specified target Dec [deg]
ra_nom	40.001270471241	Nominal RA [deg]
dec_nom	41.671263976135	Nominal Dec [deg]
roll_nom	238.93146919357	Nominal Roll [deg]
revision	2	Processing version of data
ontime	7790.3997684717	Sum of GTIs [s]
livetime	7691.7530357878	Livetime [s]
ontime4	5790.8391822577	Sum of GTIs [s]
ontime5	7790.440808475	Sum of GTIs [s]
ontime6	6319.07793957	Sum of GTIs [s]
ontime7	7790.3997684717	Sum of GTIs [s]
ontime8	6560.4283453822	Sum of GTIs [s]
ontime9	6137.4603117108	Sum of GTIs [s]
l2events	583186	Number of level 2 events

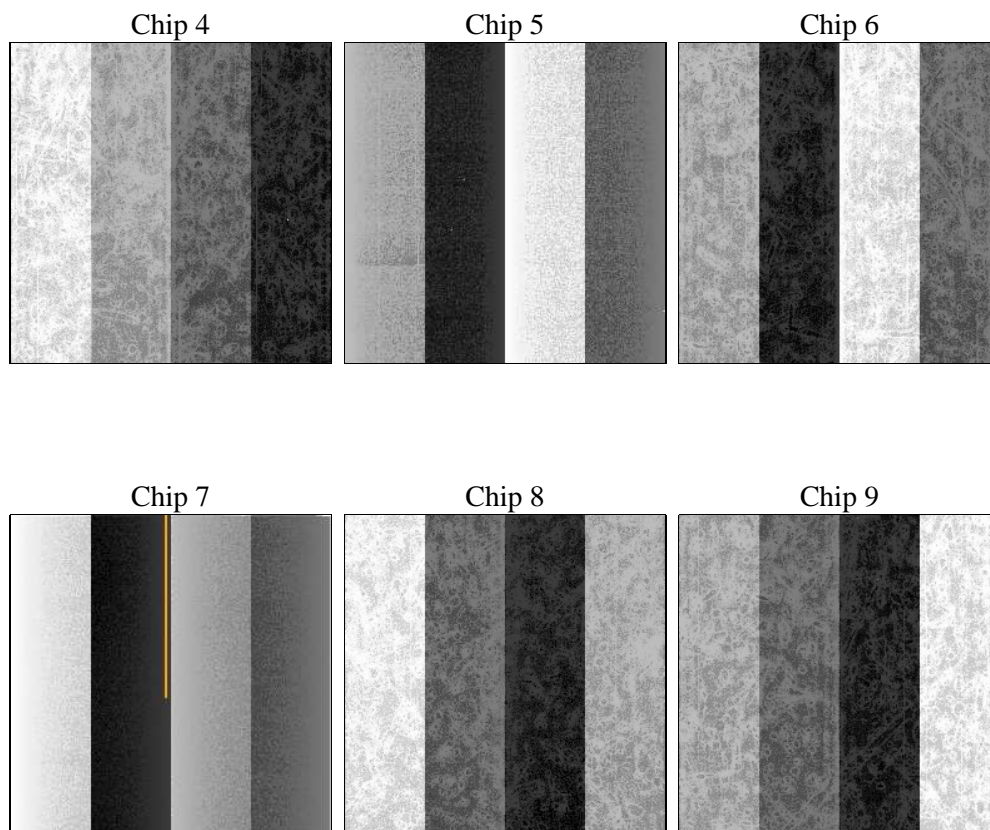
2 OBI

2.1 OBI

2.1.1 Images



2.1.2 Bias



2.1.3 Parameters

obi_num	0	Obi number	sched_exp_time	0.0	[s] Scheduled observation exposure time
ascdsver	8.4.4	Processing system revision	ontime	7790.3997684717	Sum of GTIs [s]
caldsver	4.4.9	 	ontime4	5790.8391822577	Sum of GTIs [s]
date	2012-05-05T21:24:11	Date and time of file creation	ontime5	7790.440808475	Sum of GTIs [s]
revision	2	Processing version of data	ontime6	6319.07793957	Sum of GTIs [s]
			ontime7	7790.3997684717	Sum of GTIs [s]
			ontime8	6560.4283453822	Sum of GTIs [s]
			ontime9	6137.4603117108	Sum of GTIs [s]
			l1events	1406043	Number of level 1 events

2.1.4 Events

	ccd 4	ccd 5	ccd 6	ccd 7	ccd 8	ccd 9		ccd 4	ccd 5	ccd 6	ccd 7	ccd 8	ccd 9
level 1 events	211485	244661	240376	228597	247196	233728	grade 0 events	43979	25109	46242	28039	51391	44015
rejected events	133941	102506	152136	87007	146185	151130		20%	10%	19%	12%	20%	18%
rejected %	63%	41%	63%	38%	59%	64%	grade 1 events	460	503	260	159	342	349
								0%	0%	0%	0%	0%	0%
							grade 2 events	13458	53242	16598	34550	18866	15138
								6%	21%	6%	15%	7%	6%
							grade 3 events	5270	6421	5623	12991	7169	5363
								2%	2%	2%	5%	2%	2%
							grade 4 events	5127	6015	5509	12862	6981	5332
								2%	2%	2%	5%	2%	2%
							grade 5 events	3076	9595	3427	10295	4377	3620
								1%	3%	1%	4%	1%	1%
							grade 6 events	9710	51368	14268	53148	16642	12750
								4%	20%	5%	23%	6%	5%
							grade 7 events	130405	92408	148449	76553	141428	147161
								61%	37%	61%	33%	57%	62%

2.2 Compared Parameters

Parameter	Planned	Actual
Instrument	ACIS	ACIS
Detector	ACIS-456789	ACIS-456789
Grating	NONE	NONE
Data mode	FAINT	FAINT
Observation mode	SECONDARY	SECONDARY
[deg] Pointing RA	0	40.0012704712409
[deg] Pointing Dec	0	41.67126397613537
[deg] Pointing Roll	0.0	238.9314691935695
[mm] SIM focus pos	-0.684267	-0.7809083437167272
[mm] SIM defocus	0	0.7524282956875696
[mm] SIM translation stage pos	-190.132523	250.466033080201
[mm] SIM translation stage offset	0	-0.01005468664627074
[s] Observation start time (MET)	312987353.94229	312987352.91728
Observation start date	2007-12-02T12:55:54	2007-12-02T12:55:52
[s] Observation end time (MET)	312997146.792763	312997145.76776
Observation end date	2007-12-02T15:39:07	2007-12-02T15:39:05
Read mode	TIMED	TIMED

Parameter	Planned	Actual
Obspar format version number	7	7
Obspar file type	PREDICTED	ACTUAL
Obspar update status	NONE	UPDATED
On-chip summing requested	N	N
Subarray requested	NONE	NONE
Alternating exposures requested	N	N
[s] Primary exposure time	3.2	3.2

2.3 Star Slots

2.4 FID Slots

A Summary

A.1 Status

V&V Scientist	Jen Lauer
V&V Date (YYYY-MM-DD)	2012.05.07
V&V Edition	1
V&V Disposition and Status	OK
V&V Charge Time	7.7903997684717

A.2 Comments