

V&V Reference Report

L2 ASCDS Version : 8.4.4

Observation 58065 - L2 Version 3
Chandra X-Ray Center

L2 Processing Date : May 6 2012

Contents

1	Front	2
2	OBI	3
2.1	OBI	3
2.1.1	Images	3
2.1.2	Bias	3
2.1.3	Parameters	4
2.1.4	Events	4
2.2	Compared Parameters	5
2.3	Star Slots	6
2.4	FID Slots	6
A	Summary	7
A.1	Status	7
A.2	Comments	7

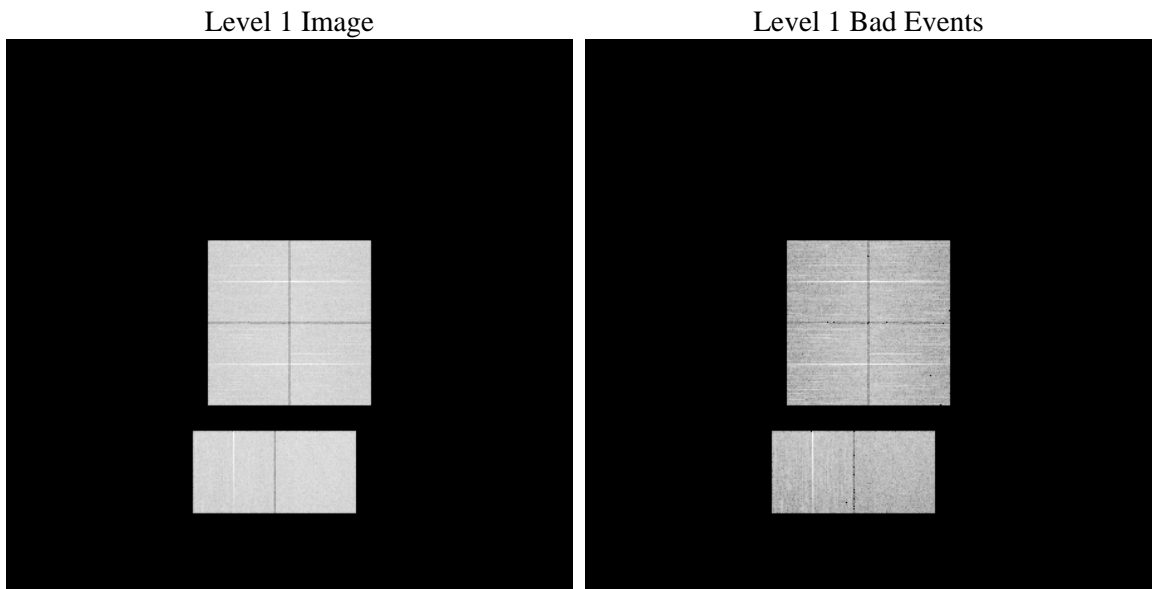
1 Front

seq_num	 	Sequence number
obs_id	58065	Observation id
title	ACIS-012367 diagnostics	Proposal title
observer	CHANDRA engineering request/realtime commanding	Principal investig
object	 	Source name
dtcycle	0	
cycle	P	events from which exps? Prim/Second/Both
ra_targ	0.0	Observer's specified target RA [deg]
dec_targ	0.0	Observer's specified target Dec [deg]
ra_nom	116.98498635157	Nominal RA [deg]
dec_nom	22.025232358522	Nominal Dec [deg]
roll_nom	86.072950105034	Nominal Roll [deg]
revision	3	Processing version of data
ontime	7769.0113605857	Sum of GTIs [s]
livetime	7670.6354608009	Livetime [s]
ontime0	7768.9703205824	Sum of GTIs [s]
ontime1	7768.9292805791	Sum of GTIs [s]
ontime2	7768.8882405758	Sum of GTIs [s]
ontime3	7769.052400589	Sum of GTIs [s]
ontime6	7768.8472005725	Sum of GTIs [s]
ontime7	7769.0113605857	Sum of GTIs [s]
l2events	699117	Number of level 2 events

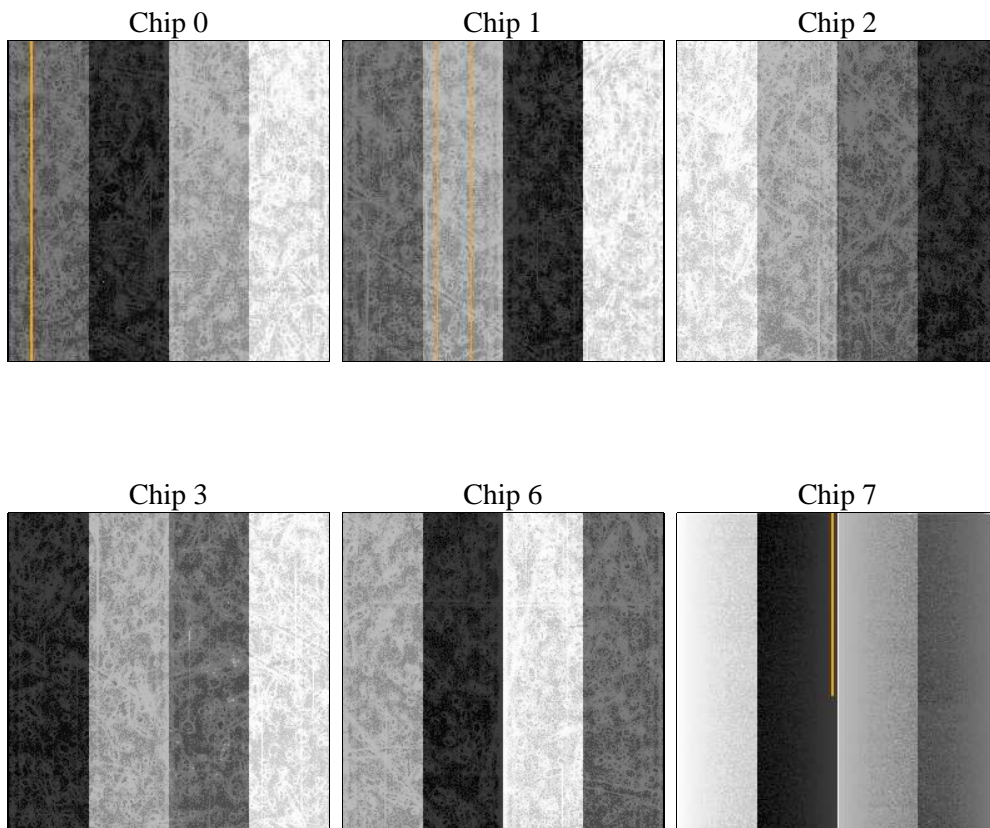
2 OBI

2.1 OBI

2.1.1 Images



2.1.2 Bias



2.1.3 Parameters

obi_num	0	Obi number	sched_exp_time	6420	[s] Scheduled observation exposure time
ascdsver	8.4.4	Processing system revision	ontime	7769.0113605857	Sum of GTIs [s]
caldsver	4.4.9	 	ontime0	7768.9703205824	Sum of GTIs [s]
date	2012-05-07T01:38:18	Date and time of file creation	ontime1	7768.9292805791	Sum of GTIs [s]
revision	3	Processing version of data	ontime2	7768.8882405758	Sum of GTIs [s]
			ontime3	7769.052400589	Sum of GTIs [s]
			ontime6	7768.8472005725	Sum of GTIs [s]
			ontime7	7769.0113605857	Sum of GTIs [s]
			l1events	1155277	Number of level 1 events

2.1.4 Events

	ccd 0	ccd 1	ccd 2	ccd 3	ccd 6	ccd 7		ccd 0	ccd 1	ccd 2	ccd 3	ccd 6	ccd 7
level 1 events	183714	186591	189489	189383	195696	210404	grade 0 events	62817	61929	63528	64401	63580	31311
rejected events	67170	68265	73991	72080	73878	63027		34%	33%	33%	34%	32%	14%
rejected %	36%	36%	39%	38%	37%	29%	grade 1 events	438	373	490	534	418	169
								0%	0%	0%	0%	0%	0%
							grade 2 events	20820	22321	19672	20087	21658	32064
								11%	11%	10%	10%	11%	15%
							grade 3 events	7484	7551	7452	7818	7655	13625
								4%	4%	3%	4%	3%	6%
							grade 4 events	7396	7630	7629	7755	7700	13469
								4%	4%	4%	4%	3%	6%
							grade 5 events	3828	3894	3545	4169	4044	9971
								2%	2%	1%	2%	2%	4%
							grade 6 events	18541	19444	17734	17784	21769	57536
								10%	10%	9%	9%	11%	27%
							grade 7 events	62390	63449	69439	66835	68872	52259
								33%	34%	36%	35%	35%	24%

2.2 Compared Parameters

Parameter	Planned	Actual
Instrument	ACIS	ACIS
Detector	ACIS-012367	ACIS-012367
Grating	NONE	NONE
Data mode	FAINT	FAINT
Observation mode	SECONDARY	SECONDARY
[deg] Pointing RA	116.9849863515743	116.9849863515743
[deg] Pointing Dec	22.02523235852245	22.02523235852246
[deg] Pointing Roll	86.07295010503428	86.07295010503429
[mm] SIM focus pos	-0.78090834371673	-0.78090834371673
[mm] SIM defocus	0.7524282194390134	0.7524282194390134
[mm] SIM translation stage pos	250.4660330802	250.4660330802
[mm] SIM translation stage offset	-0.01005726120527584	-0.01005726120527584
[s] Observation start time (MET)	314584584.869513	314584584.869513
Observation start date	2007-12-21T01:09:00	2007-12-21T00:36:24
[s] Observation end time (MET)	314594103.302664	314594103.302664
Observation end date	2007-12-21T02:56:00	2007-12-21T03:15:03
Read mode	TIMED	TIMED

Parameter	Planned	Actual
Obspar format version number	7	7
Obspar file type	PREDICTED	ACTUAL
Obspar update status	OVERRIDE	OVERRIDE
Number of optional ACIS chips dropped	0	0
On-chip summing requested	N	N
Subarray requested	NONE	NONE
Alternating exposures requested	N	N
[s] Primary exposure time	3.2	3.2

2.3 Star Slots

2.4 FID Slots

A Summary

A.1 Status

V&V Scientist	Jen Lauer
V&V Date (YYYY-MM-DD)	2012.05.08
V&V Edition	1
V&V Disposition and Status	OK
V&V Charge Time	7.7690113605857

A.2 Comments