

V&V Reference Report

L2 ASCDS Version : 8.4.3.1

Observation 62819 - L2 Version 2
Chandra X-Ray Center

L2 Processing Date : Apr 13 2012

Contents

1	Front	2
2	OBI	3
2.1	OBI	3
2.1.1	Images	3
2.1.2	Bias	3
2.1.3	Parameters	4
2.1.4	Events	4
2.2	Compared Parameters	5
2.3	Star Slots	6
2.4	FID Slots	6
A	Summary	7
A.1	Status	7
A.2	Comments	7

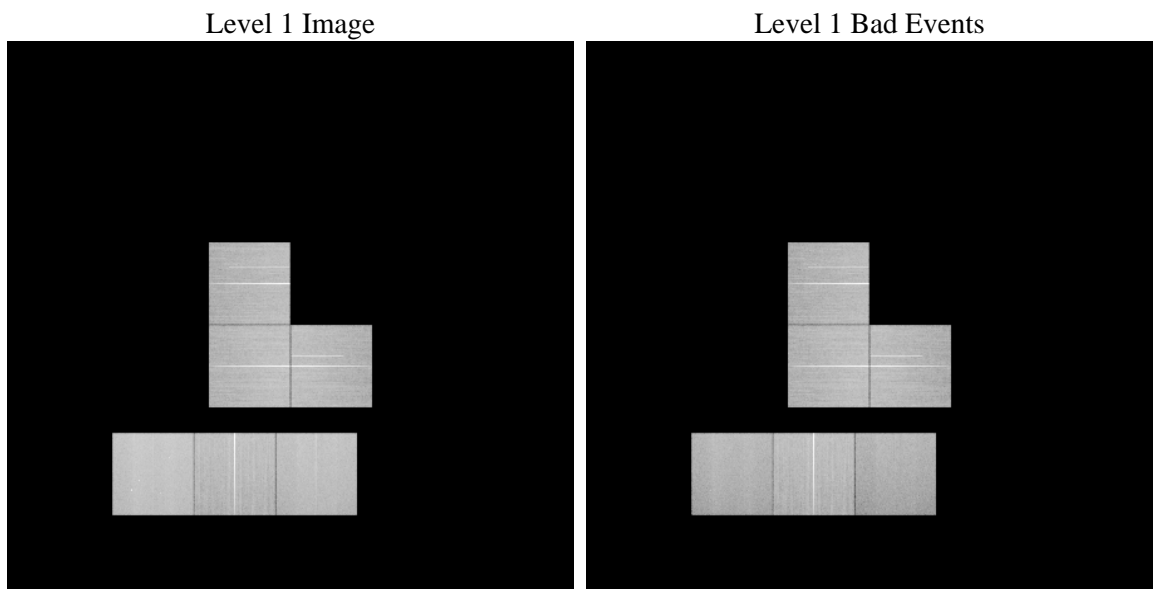
1 Front

seq_num	 	Sequence number
obs_id	62819	Observation id
title	ACIS-023567 diagnostics	Proposal title
observer	CHANDRA engineering request/realtime commanding	Principal investig
object	 	Source name
dtcycle	0	
cycle	P	events from which exps? Prim/Second/Both
ra_targ	0.0	Observer's specified target RA [deg]
dec_targ	0.0	Observer's specified target Dec [deg]
ra_nom	283.41357791091	Nominal RA [deg]
dec_nom	-37.826702860477	Nominal Dec [deg]
roll_nom	261.15624698725	Nominal Roll [deg]
revision	2	Processing version of data
ontime	47900.788470209	Sum of GTIs [s]
livetime	47294.239844207	Livetime [s]
ontime0	47900.624310195	Sum of GTIs [s]
ontime2	47900.665350199	Sum of GTIs [s]
ontime3	47890.983449578	Sum of GTIs [s]
ontime5	47900.747430205	Sum of GTIs [s]
ontime6	47900.799821615	Sum of GTIs [s]
ontime7	47900.788470209	Sum of GTIs [s]
l2events	523517	Number of level 2 events

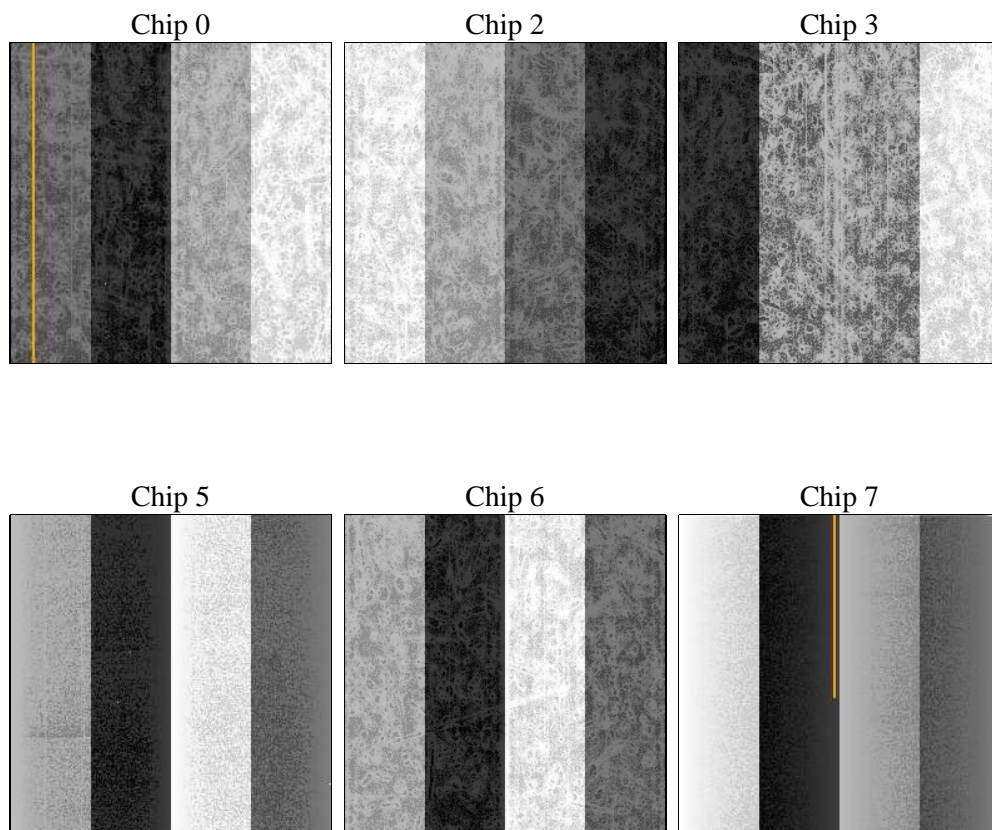
2 OBI

2.1 OBI

2.1.1 Images



2.1.2 Bias



2.1.3 Parameters

obi_num	0	Obi number	sched_exp_time	0.0	[s] Scheduled observation exposure time
ascdsver	8.4.3.1	Processing system revision	ontime	47900.788470209	Sum of GTIs [s]
caldsver	4.4.9	 	ontime0	47900.624310195	Sum of GTIs [s]
date	2012-04-13T17:34:32	Date and time of file creation	ontime2	47900.665350199	Sum of GTIs [s]
revision	2	Processing version of data	ontime3	47890.983449578	Sum of GTIs [s]
			ontime5	47900.747430205	Sum of GTIs [s]
			ontime6	47900.799821615	Sum of GTIs [s]
			ontime7	47900.788470209	Sum of GTIs [s]
			l1events	2398440	Number of level 1 events

2.1.4 Events

	ccd 0	ccd 2	ccd 3	ccd 5	ccd 6	ccd 7		ccd 0	ccd 2	ccd 3	ccd 5	ccd 6	ccd 7
level 1 events	353229	397355	362882	490101	389324	405549	grade 0 events	11364	11504	10841	13835	12022	15063
rejected events	318904	363582	330165	253493	352559	222001		3%	2%	2%	2%	3%	3%
rejected %	90%	91%	90%	51%	90%	54%	grade 1 events	174	185	191	473	201	380
								0%	0%	0%	0%	0%	0%
							grade 2 events	8458	8182	7315	71456	8491	37297
								2%	2%	2%	14%	2%	9%
							grade 3 events	4064	3767	3896	10350	4291	17255
								1%	0%	1%	2%	1%	4%
							grade 4 events	3698	3900	3859	9896	3994	17407
								1%	0%	1%	2%	1%	4%
							grade 5 events	12387	11618	14315	39781	15292	43666
								3%	2%	3%	8%	3%	10%
							grade 6 events	6781	6463	6853	131447	8020	96794
								1%	1%	1%	26%	2%	23%
							grade 7 events	306303	351736	315612	212863	337013	177687
								86%	88%	86%	43%	86%	43%

2.2 Compared Parameters

Parameter	Planned	Actual
Instrument	ACIS	ACIS
Detector	ACIS-023567	ACIS-023567
Grating	NONE	NONE
Data mode	VFAINT	VFAINT
Observation mode	SECONDARY	SECONDARY
[deg] Pointing RA	0	283.4135779109141
[deg] Pointing Dec	0	-37.82670286047654
[deg] Pointing Roll	0.0	261.1562469872472
[mm] SIM focus pos	-0.684267	-1.038866356238299
[mm] SIM defocus	0	0.001426264420575141
[mm] SIM translation stage pos	-190.132523	51.9960404362608
[mm] SIM translation stage offset	0	74.98944845534076
[s] Observation start time (MET)	280220398.376504	280220397.3515
Observation start date	2006-11-18T06:59:58	2006-11-18T06:59:57
[s] Observation end time (MET)	280270160.078854	280270159.05385
Observation end date	2006-11-18T20:49:20	2006-11-18T20:49:19
Read mode	TIMED	TIMED

Parameter	Planned	Actual
Obspar format version number	7	7
Obspar file type	PREDICTED	ACTUAL
Obspar update status	NONE	UPDATED
On-chip summing requested	N	N
Subarray requested	NONE	NONE
Alternating exposures requested	N	N
[s] Primary exposure time	3.2	3.2

2.3 Star Slots

2.4 FID Slots

A Summary

A.1 Status

V&V Scientist	Beth Sundheim
V&V Date (YYYY-MM-DD)	2012.04.17
V&V Edition	1
V&V Disposition and Status	OK
V&V Charge Time	47.900788470209

A.2 Comments