

V&V Reference Report

L2 ASCDS Version : 8.4.3

Observation 59195 - L2 Version 2
Chandra X-Ray Center

L2 Processing Date : Mar 21 2012

Contents

1	Front	2
2	OBI	3
2.1	OBI	3
2.1.1	Images	3
2.1.2	Bias	3
2.1.3	Parameters	4
2.1.4	Events	4
2.2	Compared Parameters	5
2.3	Star Slots	6
2.4	FID Slots	6
A	Summary	7
A.1	Status	7
A.2	Comments	7

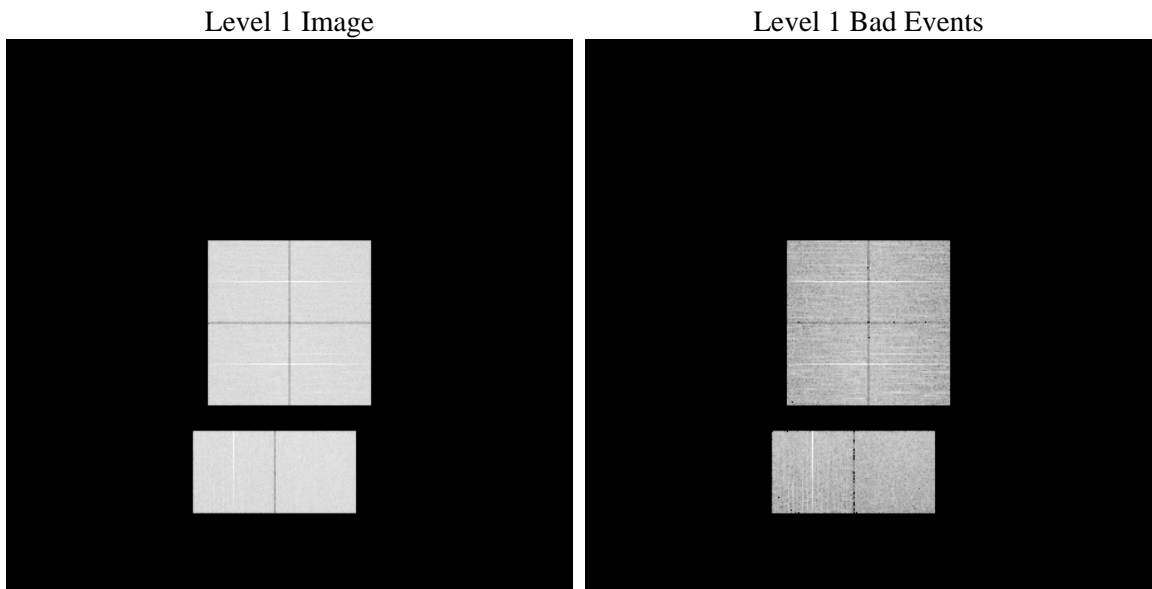
1 Front

seq_num	 	Sequence number
obs_id	59195	Observation id
title	ACIS-012367 diagnostics	Proposal title
observer	CHANDRA engineering request/realtime commanding	Principal investig
object	 	Source name
dtcycle	0	
cycle	P	events from which exps? Prim/Second/Both
ra_targ	0.0	Observer's specified target RA [deg]
dec_targ	0.0	Observer's specified target Dec [deg]
ra_nom	87.028638162719	Nominal RA [deg]
dec_nom	-3.4996915398896	Nominal Dec [deg]
roll_nom	327.67994198773	Nominal Roll [deg]
revision	2	Processing version of data
ontime	8278.3999691606	Sum of GTIs [s]
livetime	8173.573884097	Livetime [s]
ontime0	8278.3828907013	Sum of GTIs [s]
ontime1	8278.341850698	Sum of GTIs [s]
ontime2	8278.3008106947	Sum of GTIs [s]
ontime3	8278.3999691606	Sum of GTIs [s]
ontime6	8278.2597707212	Sum of GTIs [s]
ontime7	8278.3999691606	Sum of GTIs [s]
l2events	1004979	Number of level 2 events

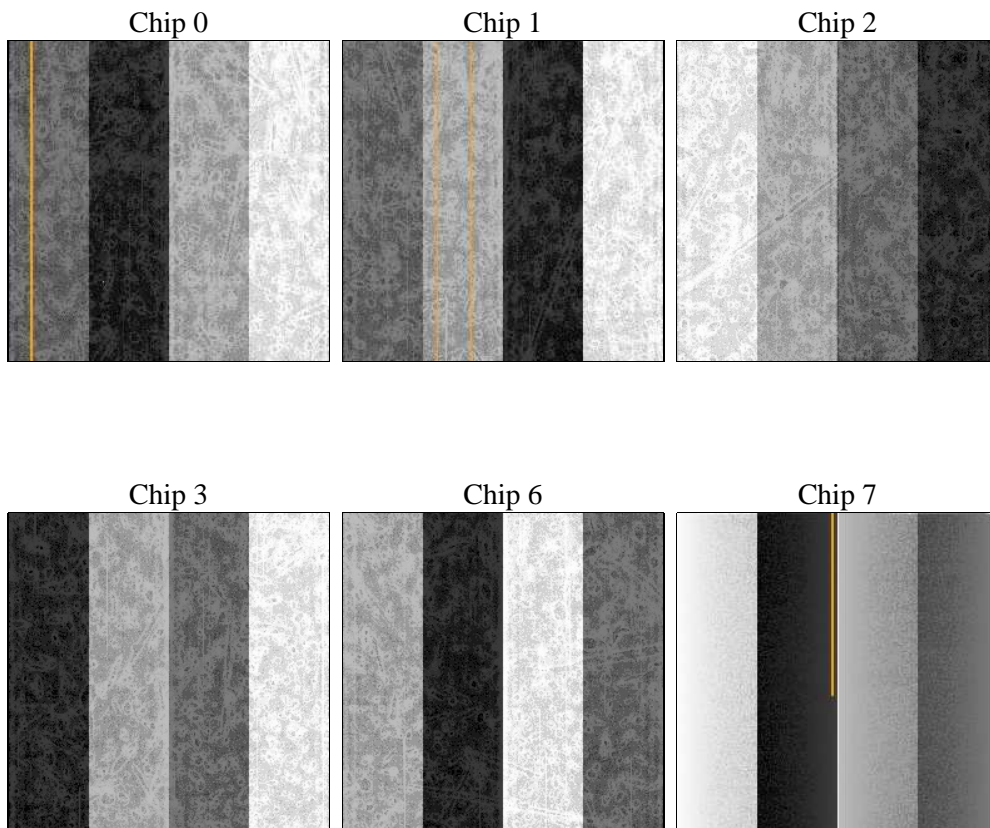
2 OBI

2.1 OBI

2.1.1 Images



2.1.2 Bias



2.1.3 Parameters

obi_num	0	Obi number	sched_exp_time	0.0	[s] Scheduled observation exposure time
ascdsver	8.4.3	Processing system revision	ontime	8278.3999691606	Sum of GTIs [s]
caldsver	4.4.8	 	ontime0	8278.3828907013	Sum of GTIs [s]
date	2012-03-22T02:10:31	Date and time of file creation	ontime1	8278.341850698	Sum of GTIs [s]
revision	2	Processing version of data	ontime2	8278.3008106947	Sum of GTIs [s]
			ontime3	8278.3999691606	Sum of GTIs [s]
			ontime6	8278.2597707212	Sum of GTIs [s]
			ontime7	8278.3999691606	Sum of GTIs [s]
			l1events	1426171	Number of level 1 events

2.1.4 Events

	ccd 0	ccd 1	ccd 2	ccd 3	ccd 6	ccd 7		ccd 0	ccd 1	ccd 2	ccd 3	ccd 6	ccd 7
level 1 events	229935	228513	235821	237888	240619	253395	grade 0 events	93048	92364	95263	95719	96017	44970
rejected events	60393	58257	64555	66130	62828	55916		40%	40%	40%	40%	39%	17%
rejected %	26%	25%	27%	27%	26%	22%	grade 1 events	623	467	645	629	497	158
								0%	0%	0%	0%	0%	0%
							grade 2 events	29416	30649	28983	29395	30735	43287
								12%	13%	12%	12%	12%	17%
							grade 3 events	11068	11181	11294	11468	11150	19413
								4%	4%	4%	4%	4%	7%
							grade 4 events	10951	10886	11366	11231	11310	19278
								4%	4%	4%	4%	4%	7%
							grade 5 events	3469	3712	3355	3890	3947	9691
								1%	1%	1%	1%	1%	3%
							grade 6 events	25123	25235	24423	24011	28643	70613
								10%	11%	10%	10%	11%	27%
							grade 7 events	56237	54019	60492	61545	58320	45985
								24%	23%	25%	25%	24%	18%

2.2 Compared Parameters

Parameter	Planned	Actual
Instrument	ACIS	ACIS
Detector	ACIS-012367	ACIS-012367
Grating	NONE	NONE
Data mode	FAINT	FAINT
Observation mode	SECONDARY	SECONDARY
[deg] Pointing RA	0	87.02863816271913
[deg] Pointing Dec	0	-3.499691539889632
[deg] Pointing Roll	0.0	327.6799419877277
[mm] SIM focus pos	-0.782348	-1.526339935833849
[mm] SIM defocus	0	0.006996703570447904
[mm] SIM translation stage pos	-233.592463	250.4635187648994
[mm] SIM translation stage offset	0	-0.007540371344731511
[s] Observation start time (MET)	252721311.690512	252721310.66551
Observation start date	2006-01-04T00:21:52	2006-01-04T00:21:50
[s] Observation end time (MET)	252733859.741093	252733858.7161
Observation end date	2006-01-04T03:51:00	2006-01-04T03:50:58
Read mode	TIMED	TIMED

Parameter	Planned	Actual
Obspar format version number	7	7
Obspar file type	PREDICTED	ACTUAL
Obspar update status	NONE	UPDATED
On-chip summing requested	N	N
Subarray requested	NONE	NONE
Alternating exposures requested	N	N
[s] Primary exposure time	3.2	3.2

2.3 Star Slots

2.4 FID Slots

A Summary

A.1 Status

V&V Scientist	Jen Lauer
V&V Date (YYYY-MM-DD)	2012.03.22
V&V Edition	1
V&V Disposition and Status	OK
V&V Charge Time	8.2783999691606

A.2 Comments