

# V&V Reference Report

## L2 ASCDS Version : 8.4.3.1

Observation 59174 - L2 Version 2  
Chandra X-Ray Center

L2 Processing Date : Mar 23 2012

## Contents

<b>1</b>	<b>Front</b>	<b>2</b>
<b>2</b>	<b>OBI</b>	<b>3</b>
2.1	OBI . . . . .	3
2.1.1	Images . . . . .	3
2.1.2	Bias . . . . .	3
2.1.3	Parameters . . . . .	4
2.1.4	Events . . . . .	4
2.2	Compared Parameters . . . . .	5
2.3	Star Slots . . . . .	6
2.4	FID Slots . . . . .	6
<b>A</b>	<b>Summary</b>	<b>7</b>
A.1	Status . . . . .	7
A.2	Comments . . . . .	7

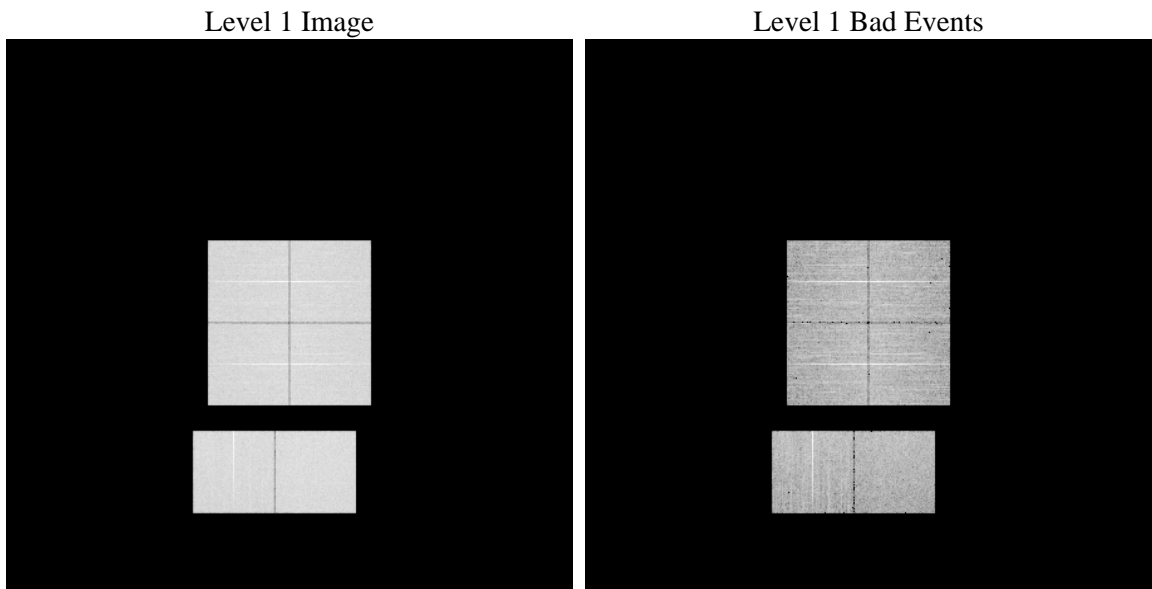
# 1 Front

seq_num	&#160	Sequence number
obs_id	59174	Observation id
title	ACIS-012367 diagnostics	Proposal title
observer	CHANDRA engineering request/realtime commanding	Principal investig
object	&#160	Source name
dtcycle	0	&#160
cycle	P	events from which exps? Prim/Second/Both
ra_targ	0.0	Observer's specified target RA [deg]
dec_targ	0.0	Observer's specified target Dec [deg]
ra_nom	139.16341061564	Nominal RA [deg]
dec_nom	41.608616022594	Nominal Dec [deg]
roll_nom	129.33795961813	Nominal Roll [deg]
revision	2	Processing version of data
ontime	7887.9999706149	Sum of GTIs [s]
livetime	7788.1173654036	Livetime [s]
ontime0	7887.9999706149	Sum of GTIs [s]
ontime1	7887.9999706149	Sum of GTIs [s]
ontime2	7887.9935388565	Sum of GTIs [s]
ontime3	7887.9999706149	Sum of GTIs [s]
ontime6	7887.952498883	Sum of GTIs [s]
ontime7	7887.9999706149	Sum of GTIs [s]
l2events	952697	Number of level 2 events

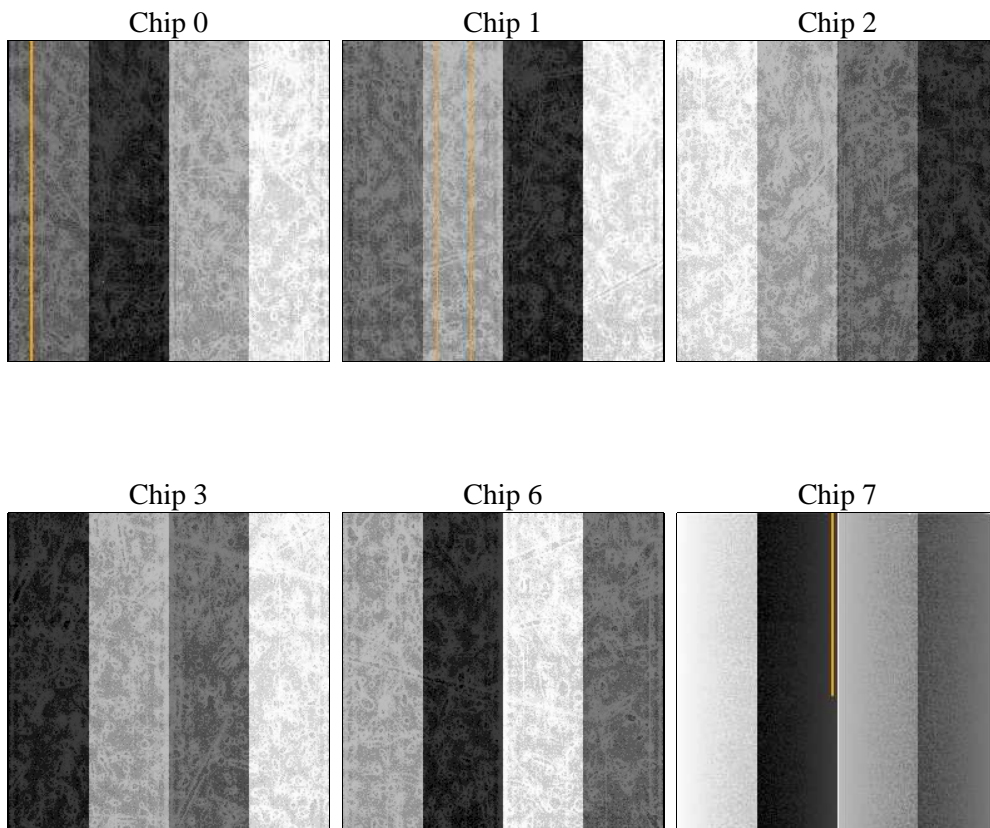
## 2 OBI

### 2.1 OBI

#### 2.1.1 Images



#### 2.1.2 Bias



### 2.1.3 Parameters

obi_num	2	Obi number	sched_exp_time	0.0	[s] Scheduled observation exposure time
ascdsver	8.4.3.1	Processing system revision	ontime	7887.9999706149	Sum of GTIs [s]
caldsver	4.4.8	&#160	ontime0	7887.9999706149	Sum of GTIs [s]
date	2012-03-23T15:17:29	Date and time of file creation	ontime1	7887.9999706149	Sum of GTIs [s]
revision	2	Processing version of data	ontime2	7887.9935388565	Sum of GTIs [s]
			ontime3	7887.9999706149	Sum of GTIs [s]
			ontime6	7887.952498883	Sum of GTIs [s]
			ontime7	7887.9999706149	Sum of GTIs [s]
			l1events	1357001	Number of level 1 events

### 2.1.4 Events

	ccd 0	ccd 1	ccd 2	ccd 3	ccd 6	ccd 7		ccd 0	ccd 1	ccd 2	ccd 3	ccd 6	ccd 7
level 1 events	219398	219096	223127	224354	229649	241377	grade 0 events	87651	87522	90131	90383	90684	43337
rejected events	59395	58197	61034	61734	61569	52562		39%	39%	40%	40%	39%	17%
rejected %	27%	26%	27%	27%	26%	21%	grade 1 events	524	476	619	562	493	158
								0%	0%	0%	0%	0%	0%
							grade 2 events	28052	28796	27602	27952	29337	41197
								12%	13%	12%	12%	12%	17%
							grade 3 events	10299	10279	10647	10945	10597	18767
								4%	4%	4%	4%	4%	7%
							grade 4 events	10583	10352	10532	10682	10544	18538
								4%	4%	4%	4%	4%	7%
							grade 5 events	3521	3574	3316	3740	3832	9230
								1%	1%	1%	1%	1%	3%
							grade 6 events	23418	23950	23181	22658	26918	66976
								10%	10%	10%	10%	11%	27%
							grade 7 events	55350	54147	57099	57432	57244	43174
								25%	24%	25%	25%	24%	17%

## 2.2 Compared Parameters

Parameter	Planned	Actual	Parameter	Planned	Actual
Instrument	ACIS	ACIS	Obspar format version number	7	7
Detector	ACIS-012367	ACIS-012367	Obspar file type	PREDICTED	ACTUAL
Grating	NONE	NONE	Obspar update status	NONE	UPDATED
Data mode	FAINT	FAINT	On-chip summing requested	N	N
Observation mode	SECONDARY	SECONDARY	Subarray requested	NONE	NONE
[deg] Pointing RA	0	139.1634106156395	Alternating exposures requested	N	N
[deg] Pointing Dec	0	41.60861602259398	[s] Primary exposure time	3.2	3.2
[deg] Pointing Roll	0.0	129.3379596181271			
[mm] SIM focus pos	-0.782348	-0.6828225247311905			
[mm] SIM defocus	0	0.8505141146731063			
[mm] SIM translation stage pos	-233.592463	250.466033080201			
[mm] SIM translation stage offset	0	-0.01005468664627074			
[s] Observation start time (MET)	253641062.683154	253641061.65814			
Observation start date	2006-01-14T15:51:03	2006-01-14T15:51:01			
[s] Observation end time (MET)	253649711.633555	253649710.60854			
Observation end date	2006-01-14T18:15:12	2006-01-14T18:15:10			
Read mode	TIMED	TIMED			

## 2.3 Star Slots

## 2.4 FID Slots

## A Summary

### A.1 Status

V&V Scientist	Jen Lauer
V&V Date (YYYY-MM-DD)	2012.03.23
V&V Edition	1
V&V Disposition and Status	OK
V&V Charge Time	7.8879999706149

### A.2 Comments