

V&V Reference Report

L2 ASCDS Version : 8.4.3

Observation 59171 - L2 Version 2
Chandra X-Ray Center

L2 Processing Date : Mar 23 2012

Contents

1	Front	2
2	OBI	3
2.1	OBI	3
2.1.1	Images	3
2.1.2	Bias	3
2.1.3	Parameters	4
2.1.4	Events	4
2.2	Compared Parameters	5
2.3	Star Slots	6
2.4	FID Slots	6
A	Summary	7
A.1	Status	7
A.2	Comments	7

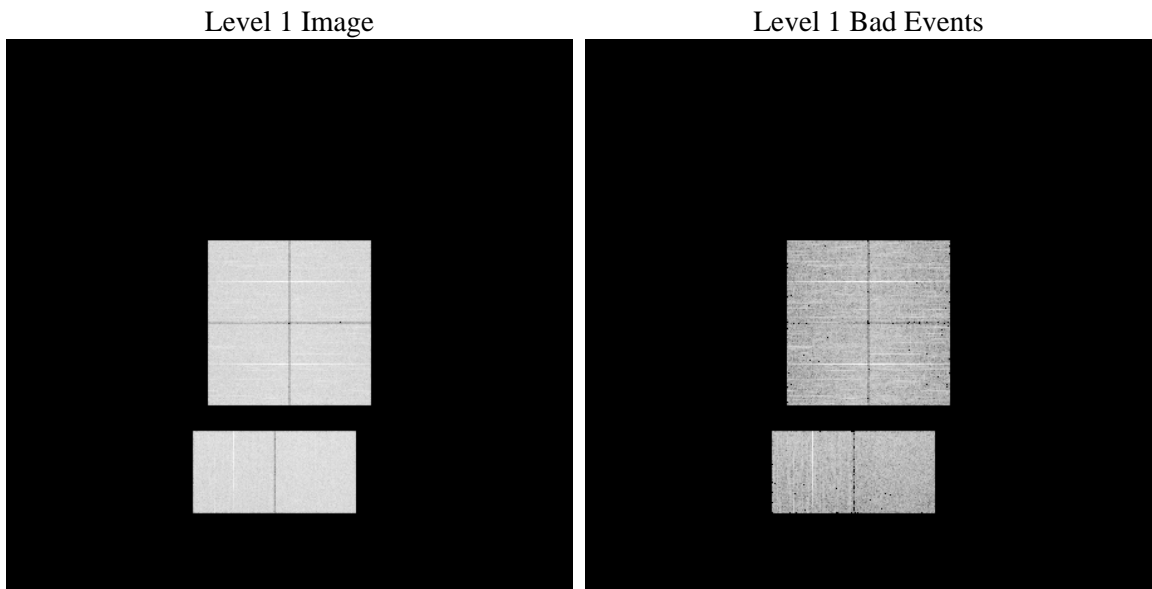
1 Front

seq_num	 	Sequence number
obs_id	59171	Observation id
title	ACIS-012367 diagnostics	Proposal title
observer	CHANDRA engineering request/realtime commanding	Principal investig
object	 	Source name
dtcycle	0	
cycle	P	events from which exps? Prim/Second/Both
ra_targ	0.0	Observer's specified target RA [deg]
dec_targ	0.0	Observer's specified target Dec [deg]
ra_nom	94.987262023894	Nominal RA [deg]
dec_nom	41.969969158685	Nominal Dec [deg]
roll_nom	230.19058706989	Nominal Roll [deg]
revision	2	Processing version of data
ontime	5817.5999783278	Sum of GTIs [s]
livetime	5743.934024464	Livetime [s]
ontime0	5817.5999783278	Sum of GTIs [s]
ontime1	5817.5999783278	Sum of GTIs [s]
ontime2	5817.5999783278	Sum of GTIs [s]
ontime3	5817.5999783278	Sum of GTIs [s]
ontime6	5817.5999783278	Sum of GTIs [s]
ontime7	5817.5999783278	Sum of GTIs [s]
l2events	702256	Number of level 2 events

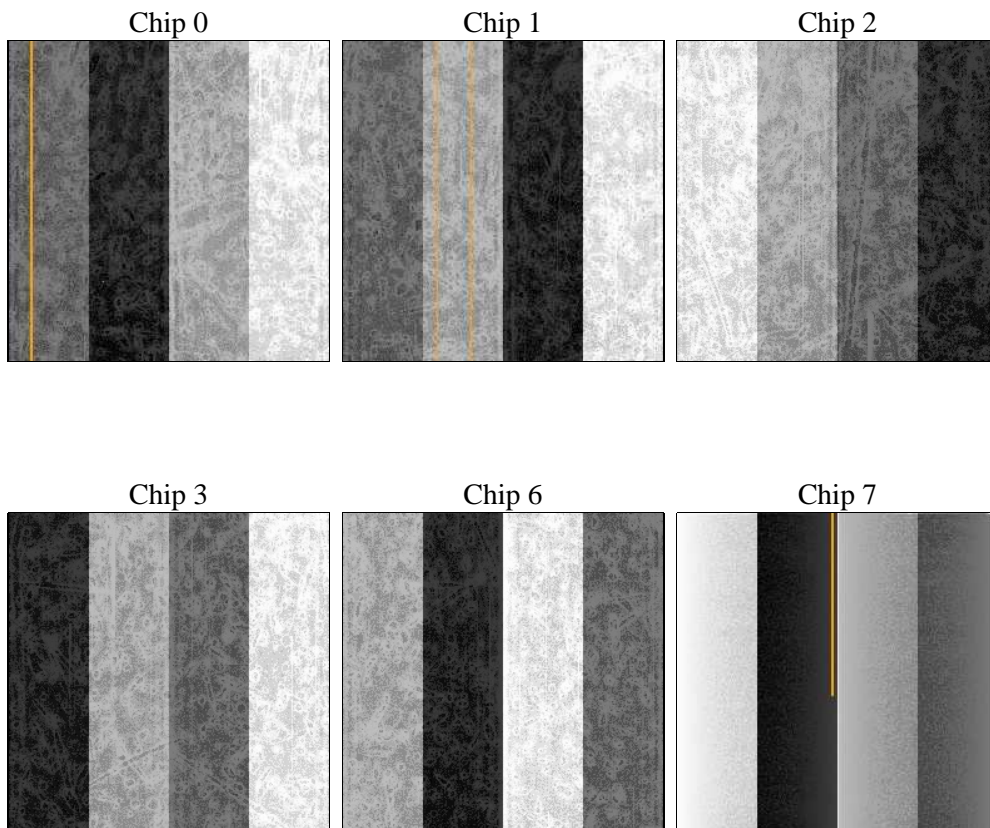
2 OBI

2.1 OBI

2.1.1 Images



2.1.2 Bias



2.1.3 Parameters

obi_num	0	Obi number	sched_exp_time	0.0	[s] Scheduled observation exposure time
ascdsver	8.4.3.1	Processing system revision	ontime	5817.5999783278	Sum of GTIs [s]
caldsver	4.4.8	 	ontime0	5817.5999783278	Sum of GTIs [s]
date	2012-03-23T15:59:12	Date and time of file creation	ontime1	5817.5999783278	Sum of GTIs [s]
revision	2	Processing version of data	ontime2	5817.5999783278	Sum of GTIs [s]
			ontime3	5817.5999783278	Sum of GTIs [s]
			ontime6	5817.5999783278	Sum of GTIs [s]
			ontime7	5817.5999783278	Sum of GTIs [s]
			l1events	1003986	Number of level 1 events

2.1.4 Events

	ccd 0	ccd 1	ccd 2	ccd 3	ccd 6	ccd 7		ccd 0	ccd 1	ccd 2	ccd 3	ccd 6	ccd 7
level 1 events	161925	162683	164450	167446	169403	178079	grade 0 events	64817	64633	66427	66885	66956	32127
rejected events	43773	43816	45420	47590	45180	39027		40%	39%	40%	39%	39%	18%
rejected %	27%	26%	27%	28%	26%	21%	grade 1 events	404	335	434	435	338	138
								0%	0%	0%	0%	0%	0%
							grade 2 events	20795	21088	20394	20590	21616	30755
								12%	12%	12%	12%	12%	17%
							grade 3 events	7707	7653	7818	7889	7857	13683
								4%	4%	4%	4%	4%	7%
							grade 4 events	7580	7783	7832	8016	7894	13603
								4%	4%	4%	4%	4%	7%
							grade 5 events	2549	2634	2388	2839	2719	6733
								1%	1%	1%	1%	1%	3%
							grade 6 events	17317	17778	16636	16529	19974	48956
								10%	10%	10%	9%	11%	27%
							grade 7 events	40756	40779	42521	44263	42049	32084
								25%	25%	25%	26%	24%	18%

2.2 Compared Parameters

Parameter	Planned	Actual
Instrument	ACIS	ACIS
Detector	ACIS-012367	ACIS-012367
Grating	NONE	NONE
Data mode	FAINT	FAINT
Observation mode	SECONDARY	SECONDARY
[deg] Pointing RA	0	94.98726202389435
[deg] Pointing Dec	0	41.96996915868466
[deg] Pointing Roll	0.0	230.1905870698879
[mm] SIM focus pos	-0.782348	-0.6828225247311905
[mm] SIM defocus	0	0.8505141146731063
[mm] SIM translation stage pos	-233.592463	250.4635187648994
[mm] SIM translation stage offset	0	-0.007540371344731511
[s] Observation start time (MET)	253812662.041116	253812661.0161
Observation start date	2006-01-16T15:31:02	2006-01-16T15:31:01
[s] Observation end time (MET)	253830765.591956	253830764.56693
Observation end date	2006-01-16T20:32:46	2006-01-16T20:32:44
Read mode	TIMED	TIMED

Parameter	Planned	Actual
Obspar format version number	7	7
Obspar file type	PREDICTED	ACTUAL
Obspar update status	NONE	UPDATED
On-chip summing requested	N	N
Subarray requested	NONE	NONE
Alternating exposures requested	N	N
[s] Primary exposure time	3.2	3.2

2.3 Star Slots

2.4 FID Slots

A Summary

A.1 Status

V&V Scientist	Jen Lauer
V&V Date (YYYY-MM-DD)	2012.03.23
V&V Edition	1
V&V Disposition and Status	OK
V&V Charge Time	5.8175999783278

A.2 Comments