

# V&V Reference Report

## L2 ASCDS Version : 8.4.3

Observation 59165 - L2 Version 3  
Chandra X-Ray Center

L2 Processing Date : Mar 23 2012

## Contents

<b>1</b>	<b>Front</b>	<b>2</b>
<b>2</b>	<b>OBI</b>	<b>3</b>
2.1	OBI . . . . .	3
2.1.1	Images . . . . .	3
2.1.2	Bias . . . . .	3
2.1.3	Parameters . . . . .	4
2.1.4	Events . . . . .	4
2.2	Compared Parameters . . . . .	5
2.3	Star Slots . . . . .	6
2.4	FID Slots . . . . .	6
<b>A</b>	<b>Summary</b>	<b>7</b>
A.1	Status . . . . .	7
A.2	Comments . . . . .	7

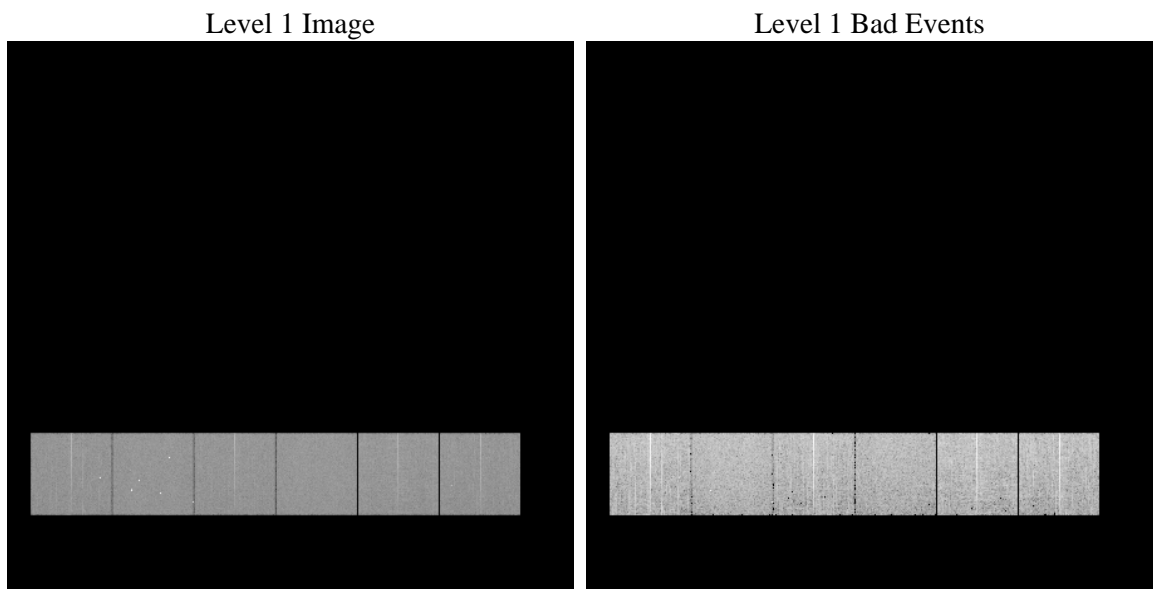
# 1 Front

seq_num	&#160	Sequence number
obs_id	59165	Observation id
title	ACIS-456789 diagnostics	Proposal title
observer	CHANDRA engineering request/realtime commanding	Principal investig
object	&#160	Source name
dtcycle	0	&#160
cycle	P	events from which exps? Prim/Second/Both
ra_targ	0.0	Observer's specified target RA [deg]
dec_targ	0.0	Observer's specified target Dec [deg]
ra_nom	134.45866839719	Nominal RA [deg]
dec_nom	46.497113510237	Nominal Dec [deg]
roll_nom	152.89424662695	Nominal Roll [deg]
revision	3	Processing version of data
ontime	6005.5950681567	Sum of GTIs [s]
livetime	5929.5486072685	Livetime [s]
ontime4	6008.3130649328	Sum of GTIs [s]
ontime5	6008.3951449394	Sum of GTIs [s]
ontime6	6008.3541049361	Sum of GTIs [s]
ontime7	6005.5950681567	Sum of GTIs [s]
ontime8	6008.2720249593	Sum of GTIs [s]
ontime9	6005.5950681567	Sum of GTIs [s]
l2events	727082	Number of level 2 events

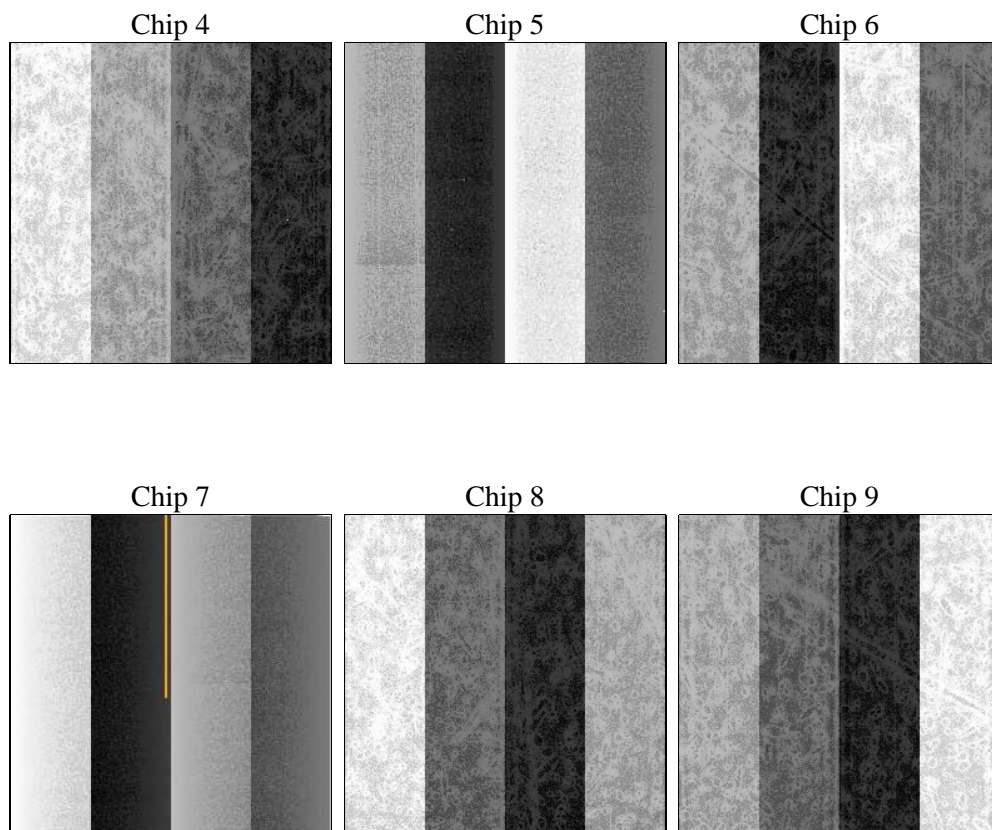
## 2 OBI

### 2.1 OBI

#### 2.1.1 Images



#### 2.1.2 Bias



### 2.1.3 Parameters

obi_num	0	Obi number	sched_exp_time	0.0	[s] Scheduled observation exposure time
ascdsver	8.4.3	Processing system revision	ontime	6005.5950681567	Sum of GTIs [s]
caldsver	4.4.8	&#160	ontime4	6008.3130649328	Sum of GTIs [s]
date	2012-03-23T16:58:59	Date and time of file creation	ontime5	6008.3951449394	Sum of GTIs [s]
revision	3	Processing version of data	ontime6	6008.3541049361	Sum of GTIs [s]
			ontime7	6005.5950681567	Sum of GTIs [s]
			ontime8	6008.2720249593	Sum of GTIs [s]
			ontime9	6005.5950681567	Sum of GTIs [s]
			l1events	1072506	Number of level 1 events

### 2.1.4 Events

	ccd 4	ccd 5	ccd 6	ccd 7	ccd 8	ccd 9		ccd 4	ccd 5	ccd 6	ccd 7	ccd 8	ccd 9
level 1 events	171976	182058	176283	182898	185520	173771	grade 0 events	70255	29138	69314	32391	71396	67793
rejected events	52319	44980	48147	40774	52685	50433		40%	16%	39%	17%	38%	39%
rejected %	30%	24%	27%	22%	28%	29%	grade 1 events	552	319	375	105	452	433
								0%	0%	0%	0%	0%	0%
							grade 2 events	18106	50541	22294	31210	23476	20985
								10%	27%	12%	17%	12%	12%
							grade 3 events	7975	6772	7872	13949	8806	8040
								4%	3%	4%	7%	4%	4%
							grade 4 events	8026	6671	7943	13660	8708	7915
								4%	3%	4%	7%	4%	4%
							grade 5 events	2833	6319	2958	6852	3527	3282
								1%	3%	1%	3%	1%	1%
							grade 6 events	15295	43956	20713	50914	20449	18605
								8%	24%	11%	27%	11%	10%
							grade 7 events	48934	38342	44814	33817	48706	46718
								28%	21%	25%	18%	26%	26%

## 2.2 Compared Parameters

Parameter	Planned	Actual	Parameter	Planned	Actual
Instrument	ACIS	ACIS	Obspar format version number	7	7
Detector	ACIS-456789	ACIS-456789	Obspar file type	PREDICTED	ACTUAL
Grating	NONE	NONE	Obspar update status	NONE	UPDATED
Data mode	FAINT	FAINT	On-chip summing requested	N	N
Observation mode	SECONDARY	SECONDARY	Subarray requested	NONE	NONE
[deg] Pointing RA	0	134.4586683971882	Alternating exposures requested	N	N
[deg] Pointing Dec	0	46.49711351023659	[s] Primary exposure time	3.2	3.2
[deg] Pointing Roll	0.0	152.8942466269529			
[mm] SIM focus pos	-0.684267	-0.6828225247311905			
[mm] SIM defocus	0	0.8505141146731063			
[mm] SIM translation stage pos	-190.132523	250.466033080201			
[mm] SIM translation stage offset	0	-0.01005468664627074			
[s] Observation start time (MET)	254040963.351673	254040961.32668			
Observation start date	2006-01-19T06:56:03	2006-01-19T06:56:01			
[s] Observation end time (MET)	254059384.652527	254059382.62753			
Observation end date	2006-01-19T12:03:05	2006-01-19T12:03:02			
Read mode	TIMED	TIMED			

## 2.3 Star Slots

## 2.4 FID Slots

## A Summary

### A.1 Status

V&V Scientist	Jen Lauer
V&V Date (YYYY-MM-DD)	2012.03.23
V&V Edition	1
V&V Disposition and Status	OK
V&V Charge Time	6.0055950681567

### A.2 Comments