

# V&V Reference Report

## L2 ASCDS Version : 8.4.3

Observation 59134 - L2 Version 2  
Chandra X-Ray Center

L2 Processing Date : Mar 25 2012

## Contents

<b>1</b>	<b>Front</b>	<b>2</b>
<b>2</b>	<b>OBI</b>	<b>3</b>
2.1	OBI . . . . .	3
2.1.1	Images . . . . .	3
2.1.2	Bias . . . . .	3
2.1.3	Parameters . . . . .	4
2.1.4	Events . . . . .	4
2.2	Compared Parameters . . . . .	5
2.3	Star Slots . . . . .	6
2.4	FID Slots . . . . .	6
<b>A</b>	<b>Summary</b>	<b>7</b>
A.1	Status . . . . .	7
A.2	Comments . . . . .	7

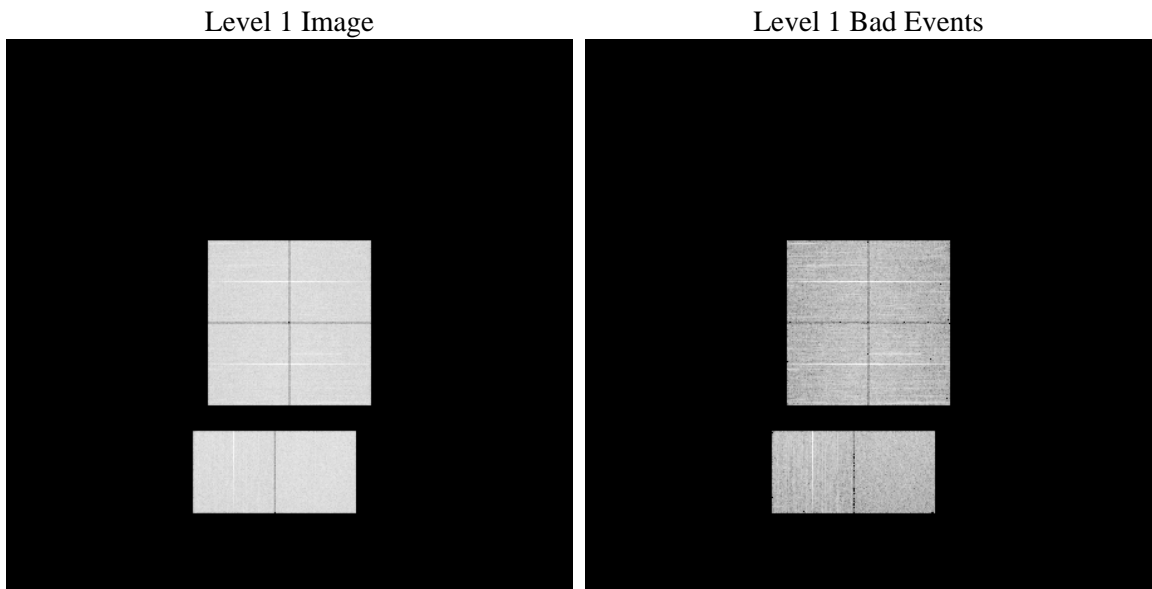
# 1 Front

seq_num	&#160	Sequence number
obs_id	59134	Observation id
title	ACIS-012367 diagnostics	Proposal title
observer	CHANDRA engineering request/realtime commanding	Principal investig
object	&#160	Source name
dtcycle	0	&#160
cycle	P	events from which exps? Prim/Second/Both
ra_targ	0.0	Observer's specified target RA [deg]
dec_targ	0.0	Observer's specified target Dec [deg]
ra_nom	155.96233605779	Nominal RA [deg]
dec_nom	40.000108031982	Nominal Dec [deg]
roll_nom	141.79434064558	Nominal Roll [deg]
revision	2	Processing version of data
ontime	7420.081220001	Sum of GTIs [s]
livetime	7326.1236837568	Livetime [s]
ontime0	7420.0401699841	Sum of GTIs [s]
ontime1	7423.2401202917	Sum of GTIs [s]
ontime2	7423.1990802884	Sum of GTIs [s]
ontime3	7423.3632403016	Sum of GTIs [s]
ontime6	7423.1580403149	Sum of GTIs [s]
ontime7	7420.081220001	Sum of GTIs [s]
l2events	883103	Number of level 2 events

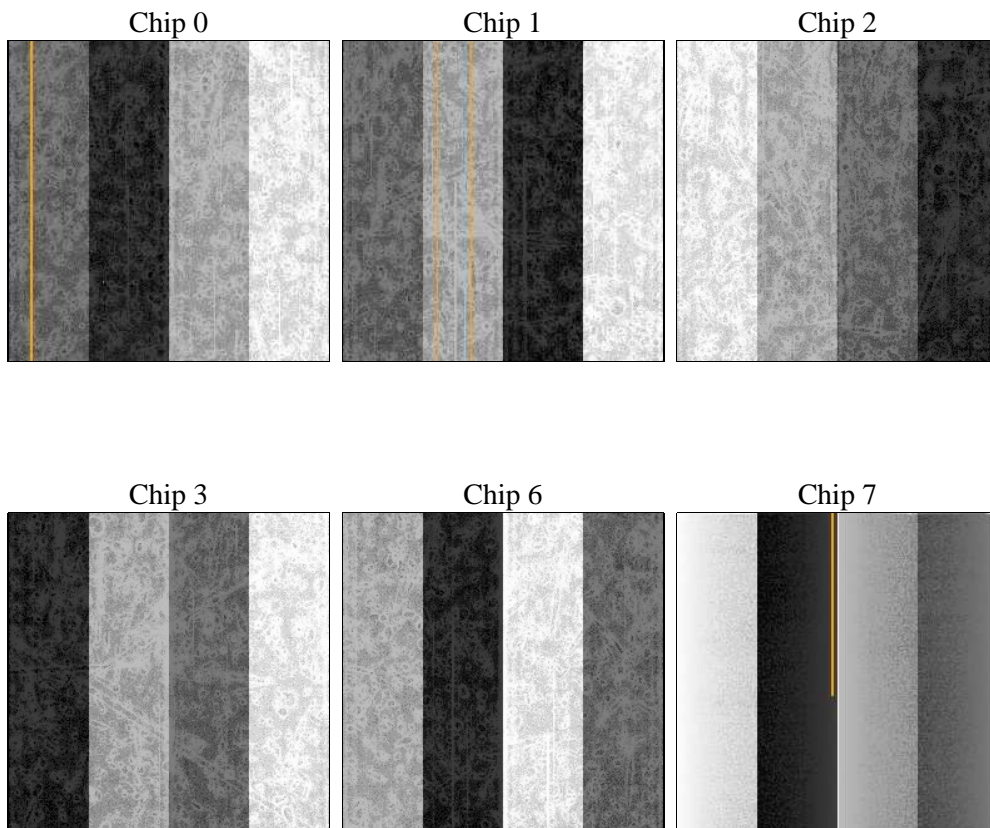
## 2 OBI

### 2.1 OBI

#### 2.1.1 Images



#### 2.1.2 Bias



### 2.1.3 Parameters

obi_num	0	Obi number	sched_exp_time	0.0	[s] Scheduled observation exposure time
ascdsver	8.4.3	Processing system revision	ontime	7420.081220001	Sum of GTIs [s]
caldsver	4.4.8	&#160	ontime0	7420.0401699841	Sum of GTIs [s]
date	2012-03-25T02:40:24	Date and time of file creation	ontime1	7423.2401202917	Sum of GTIs [s]
revision	2	Processing version of data	ontime2	7423.1990802884	Sum of GTIs [s]
			ontime3	7423.3632403016	Sum of GTIs [s]
			ontime6	7423.1580403149	Sum of GTIs [s]
			ontime7	7420.081220001	Sum of GTIs [s]
			l1events	1294462	Number of level 1 events

### 2.1.4 Events

	ccd 0	ccd 1	ccd 2	ccd 3	ccd 6	ccd 7		ccd 0	ccd 1	ccd 2	ccd 3	ccd 6	ccd 7
level 1 events	208185	206852	213592	215380	220260	230193	grade 0 events	82046	81859	84861	85266	85604	40148
rejected events	60085	57798	63060	64795	64179	55157		39%	39%	39%	39%	38%	17%
rejected %	28%	27%	29%	30%	29%	23%	grade 1 events	547	455	599	566	482	163
								0%	0%	0%	0%	0%	0%
							grade 2 events	26258	27171	25967	26040	27620	38788
								12%	13%	12%	12%	12%	16%
							grade 3 events	10026	9858	10245	10136	9893	17548
								4%	4%	4%	4%	4%	7%
							grade 4 events	9854	9840	10120	10136	9907	17546
								4%	4%	4%	4%	4%	7%
							grade 5 events	3367	3447	3228	3753	3696	8913
								1%	1%	1%	1%	1%	3%
							grade 6 events	22212	22717	21701	21431	25451	63801
								10%	10%	10%	9%	11%	27%
							grade 7 events	53875	51505	56871	58052	57607	43286
								25%	24%	26%	26%	26%	18%

## 2.2 Compared Parameters

Parameter	Planned	Actual
Instrument	ACIS	ACIS
Detector	ACIS-012367	ACIS-012367
Grating	NONE	NONE
Data mode	FAINT	FAINT
Observation mode	SECONDARY	SECONDARY
[deg] Pointing RA	0	155.9623360577935
[deg] Pointing Dec	0	40.00010803198237
[deg] Pointing Roll	0.0	141.7943406455809
[mm] SIM focus pos	-0.782348	-0.7809083437167272
[mm] SIM defocus	0	0.7524282956875696
[mm] SIM translation stage pos	-233.592463	250.466033080201
[mm] SIM translation stage offset	0	-0.01005468664627074
[s] Observation start time (MET)	255453935.167208	255453934.1422
Observation start date	2006-02-04T15:25:35	2006-02-04T15:25:34
[s] Observation end time (MET)	255476696.318264	255476695.29325
Observation end date	2006-02-04T21:44:56	2006-02-04T21:44:55
Read mode	TIMED	TIMED

Parameter	Planned	Actual
Obspar format version number	7	7
Obspar file type	PREDICTED	ACTUAL
Obspar update status	NONE	UPDATED
On-chip summing requested	N	N
Subarray requested	NONE	NONE
Alternating exposures requested	N	N
[s] Primary exposure time	3.2	3.2

## 2.3 Star Slots

## 2.4 FID Slots

## **A Summary**

### **A.1 Status**

V&V Scientist	Jen Lauer
V&V Date (YYYY-MM-DD)	2012.03.27
V&V Edition	1
V&V Disposition and Status	OK
V&V Charge Time	7.420081220001

### **A.2 Comments**