

V&V Reference Report

L2 ASCDS Version : 8.4.3

Observation 59120 - L2 Version 2
Chandra X-Ray Center

L2 Processing Date : Mar 25 2012

Contents

1	Front	2
2	OBI	3
2.1	OBI	3
2.1.1	Images	3
2.1.2	Bias	3
2.1.3	Parameters	4
2.1.4	Events	4
2.2	Compared Parameters	5
2.3	Star Slots	6
2.4	FID Slots	6
A	Summary	7
A.1	Status	7
A.2	Comments	7

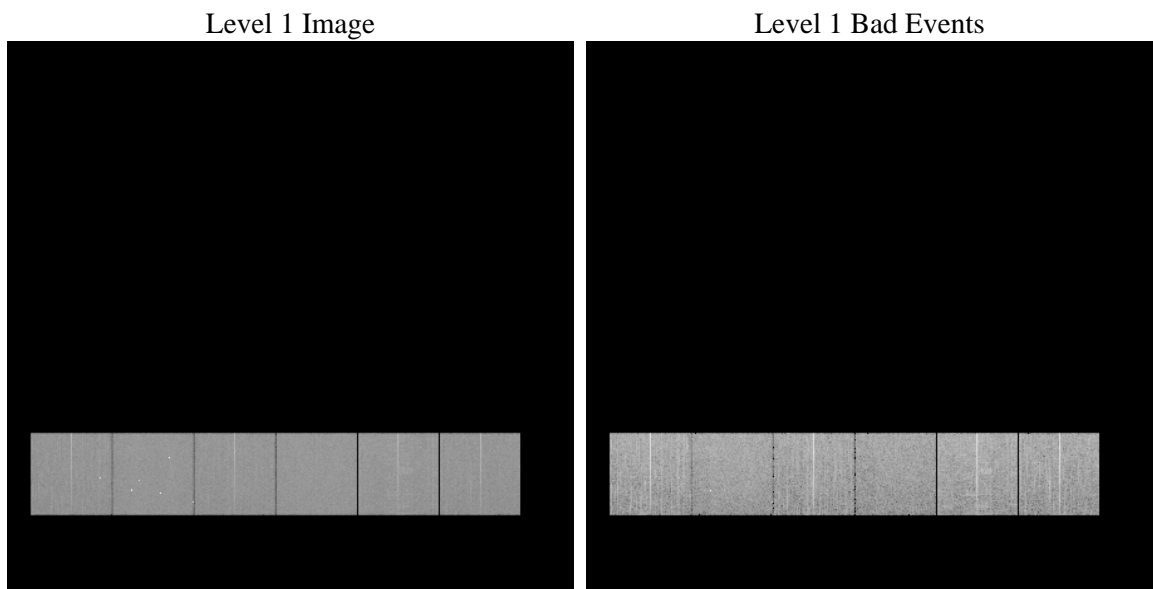
1 Front

seq_num	 	Sequence number
obs_id	59120	Observation id
title	ACIS-456789 diagnostics	Proposal title
observer	CHANDRA engineering request/realtime commanding	Principal investig
object	 	Source name
dtcycle	0	
cycle	P	events from which exps? Prim/Second/Both
ra_targ	0.0	Observer's specified target RA [deg]
dec_targ	0.0	Observer's specified target Dec [deg]
ra_nom	171.54387858853	Nominal RA [deg]
dec_nom	33.119328249383	Nominal Dec [deg]
roll_nom	127.81665887722	Nominal Roll [deg]
revision	2	Processing version of data
ontime	7797.4155248106	Sum of GTIs [s]
livetime	7698.6799543954	Livetime [s]
ontime4	7752.1649906337	Sum of GTIs [s]
ontime5	7797.4565648139	Sum of GTIs [s]
ontime6	7797.4976048172	Sum of GTIs [s]
ontime7	7797.4155248106	Sum of GTIs [s]
ontime8	7798.3999709487	Sum of GTIs [s]
ontime9	7797.3744848073	Sum of GTIs [s]
l2events	934153	Number of level 2 events

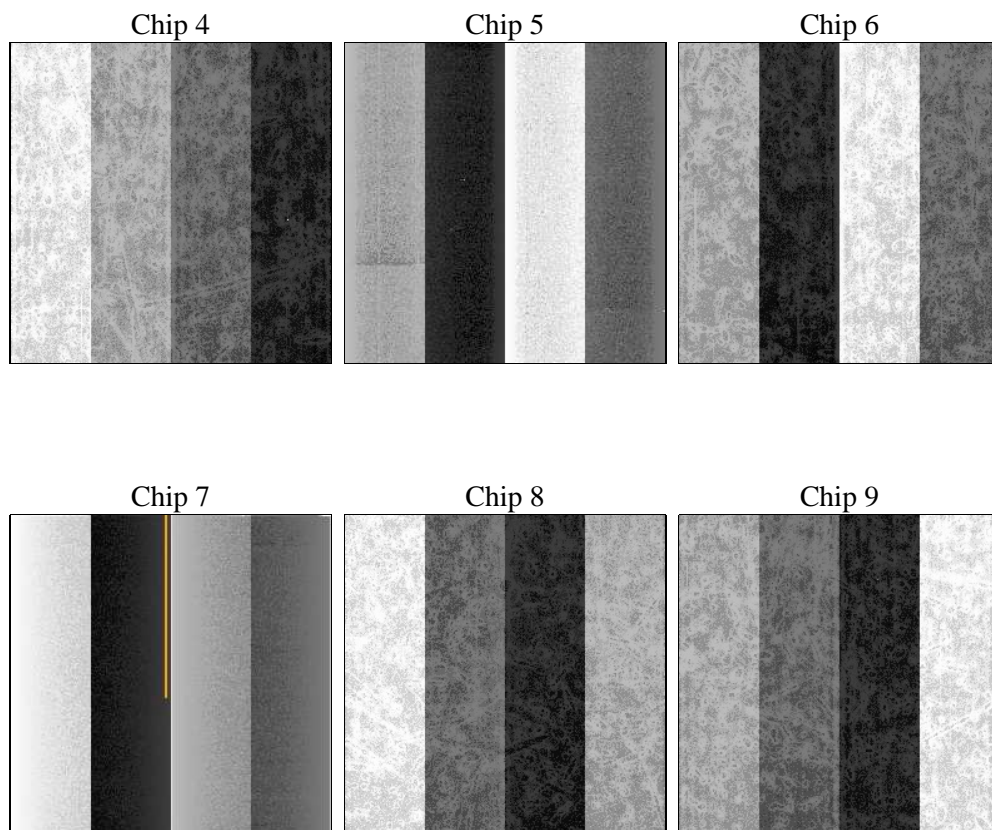
2 OBI

2.1 OBI

2.1.1 Images



2.1.2 Bias



2.1.3 Parameters

obi_num	0	Obi number	sched_exp_time	0.0	[s] Scheduled observation exposure time
ascdsver	8.4.3	Processing system revision	ontime	7797.4155248106	Sum of GTIs [s]
caldsver	4.4.8	 	ontime4	7752.1649906337	Sum of GTIs [s]
date	2012-03-25T17:27:00	Date and time of file creation	ontime5	7797.4565648139	Sum of GTIs [s]
revision	2	Processing version of data	ontime6	7797.4976048172	Sum of GTIs [s]
			ontime7	7797.4155248106	Sum of GTIs [s]
			ontime8	7798.3999709487	Sum of GTIs [s]
			ontime9	7797.3744848073	Sum of GTIs [s]
			l1events	1392962	Number of level 1 events

2.1.4 Events

	ccd 4	ccd 5	ccd 6	ccd 7	ccd 8	ccd 9		ccd 4	ccd 5	ccd 6	ccd 7	ccd 8	ccd 9
level 1 events	223088	235699	227655	238313	244615	223592	grade 0 events	88522	39243	88117	42544	91535	86252
rejected events	70495	59820	64589	53882	72340	66592		39%	16%	38%	17%	37%	38%
rejected %	31%	25%	28%	22%	29%	29%	grade 1 events	758	368	478	160	528	592
								0%	0%	0%	0%	0%	0%
							grade 2 events	24184	61207	28443	40276	31146	26604
								10%	25%	12%	16%	12%	11%
							grade 3 events	10348	9743	10254	18333	11567	10213
								4%	4%	4%	7%	4%	4%
							grade 4 events	10007	9621	10379	17938	11470	10253
								4%	4%	4%	7%	4%	4%
							grade 5 events	3817	9182	3980	9446	4872	4200
								1%	3%	1%	3%	1%	1%
							grade 6 events	19532	56065	25873	65340	26624	23678
								8%	23%	11%	27%	10%	10%
							grade 7 events	65920	50270	60131	44276	66873	61800
								29%	21%	26%	18%	27%	27%

2.2 Compared Parameters

Parameter	Planned	Actual	Parameter	Planned	Actual
Instrument	ACIS	ACIS	Obspar format version number	7	7
Detector	ACIS-456789	ACIS-456789	Obspar file type	PREDICTED	ACTUAL
Grating	NONE	NONE	Obspar update status	NONE	UPDATED
Data mode	FAINT	FAINT	On-chip summing requested	N	N
Observation mode	SECONDARY	SECONDARY	Subarray requested	NONE	NONE
[deg] Pointing RA	0	171.5438785885261	Alternating exposures requested	N	N
[deg] Pointing Dec	0	33.11932824938282	[s] Primary exposure time	3.2	3.2
[deg] Pointing Roll	0.0	127.8166588772154			
[mm] SIM focus pos	-0.684267	-0.6828225247311905			
[mm] SIM defocus	0	0.8505141146731063			
[mm] SIM translation stage pos	-190.132523	250.466033080201			
[mm] SIM translation stage offset	0	-0.01005468664627074			
[s] Observation start time (MET)	256324190.957581	256324189.93261			
Observation start date	2006-02-14T17:09:51	2006-02-14T17:09:49			
[s] Observation end time (MET)	256346685.608624	256346684.58365			
Observation end date	2006-02-14T23:24:46	2006-02-14T23:24:44			
Read mode	TIMED	TIMED			

2.3 Star Slots

2.4 FID Slots

A Summary

A.1 Status

V&V Scientist	Jen Lauer
V&V Date (YYYY-MM-DD)	2012.03.27
V&V Edition	1
V&V Disposition and Status	OK
V&V Charge Time	7.7974155248106

A.2 Comments