

# V&V Reference Report

## L2 ASCDS Version : 8.4.3

Observation 59114 - L2 Version 2  
Chandra X-Ray Center

L2 Processing Date : Mar 25 2012

## Contents

<b>1</b>	<b>Front</b>	<b>2</b>
<b>2</b>	<b>OBI</b>	<b>3</b>
2.1	OBI . . . . .	3
2.1.1	Images . . . . .	3
2.1.2	Bias . . . . .	3
2.1.3	Parameters . . . . .	4
2.1.4	Events . . . . .	4
2.2	Compared Parameters . . . . .	5
2.3	Star Slots . . . . .	6
2.4	FID Slots . . . . .	6
<b>A</b>	<b>Summary</b>	<b>7</b>
A.1	Status . . . . .	7
A.2	Comments . . . . .	7

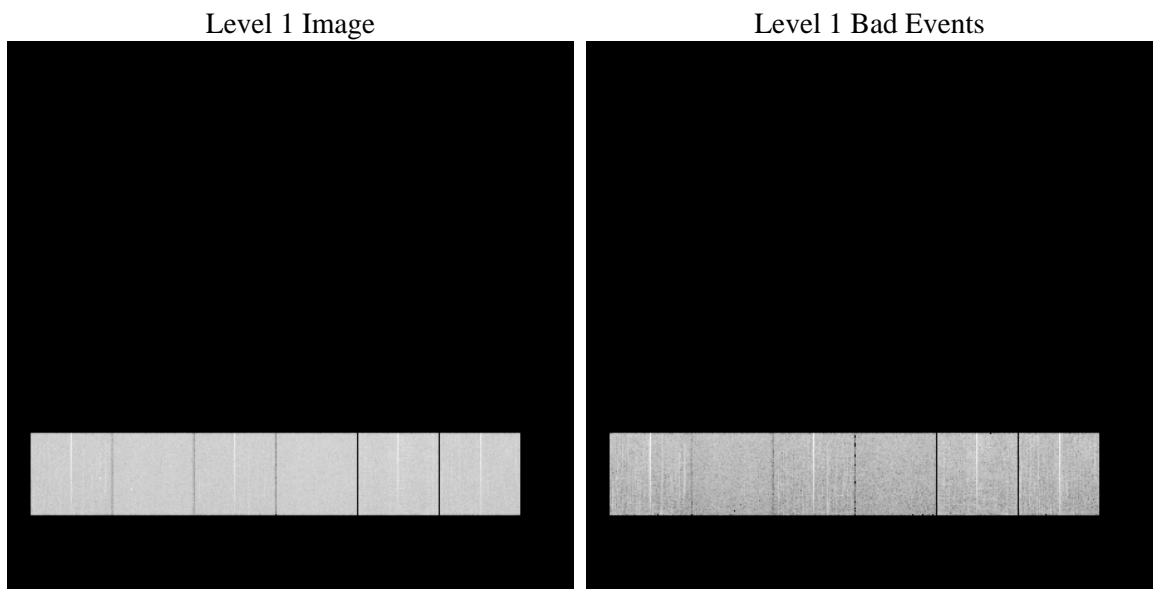
# 1 Front

seq_num	&#160	Sequence number
obs_id	59114	Observation id
title	ACIS-456789 diagnostics	Proposal title
observer	CHANDRA engineering request/realtime commanding	Principal investig
object	&#160	Source name
dtcycle	0	&#160
cycle	P	events from which exps? Prim/Second/Both
ra_targ	0.0	Observer's specified target RA [deg]
dec_targ	0.0	Observer's specified target Dec [deg]
ra_nom	142.02678593602	Nominal RA [deg]
dec_nom	-16.990619499392	Nominal Dec [deg]
roll_nom	341.92833740123	Nominal Roll [deg]
revision	2	Processing version of data
ontime	7955.1999703646	Sum of GTIs [s]
livetime	7854.4664382935	Livetime [s]
ontime4	7955.1999703646	Sum of GTIs [s]
ontime5	7955.1999703646	Sum of GTIs [s]
ontime6	7955.1999703646	Sum of GTIs [s]
ontime7	7955.1999703646	Sum of GTIs [s]
ontime8	7955.1999703646	Sum of GTIs [s]
ontime9	7955.1999703646	Sum of GTIs [s]
l2events	945402	Number of level 2 events

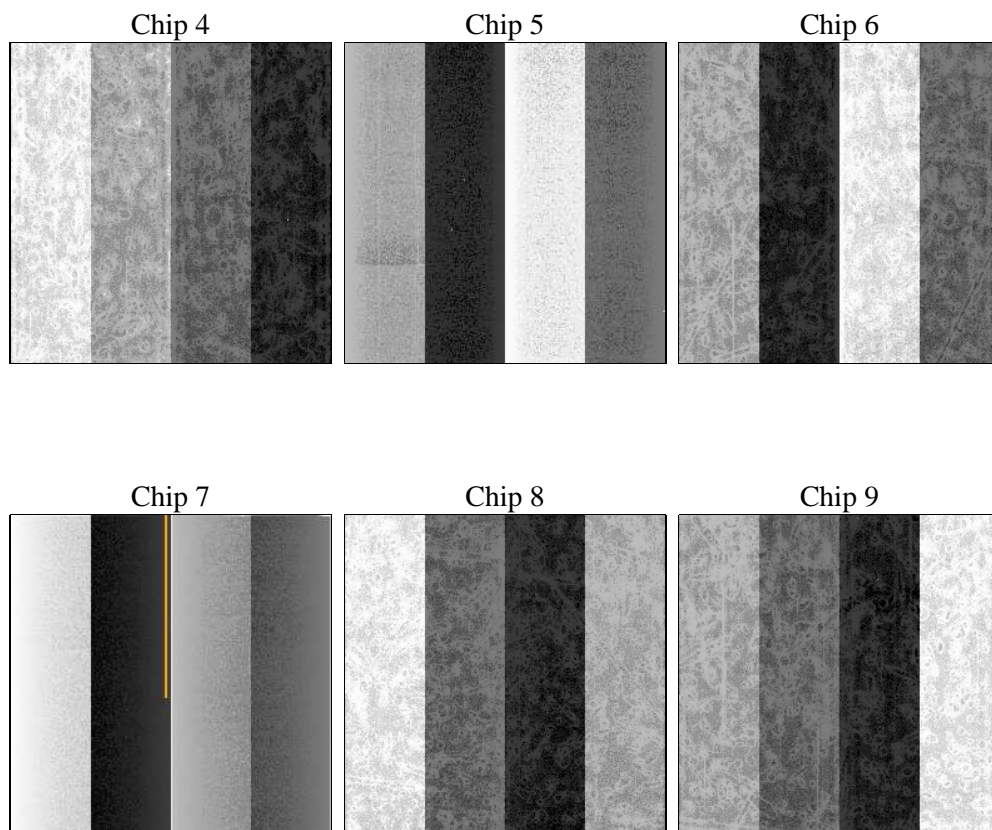
## 2 OBI

### 2.1 OBI

#### 2.1.1 Images



#### 2.1.2 Bias



### 2.1.3 Parameters

obi_num	0	Obi number	sched_exp_time	0.0	[s] Scheduled observation exposure time
ascdsver	8.4.3	Processing system revision	ontime	7955.1999703646	Sum of GTIs [s]
caldsver	4.4.8	&#160	ontime4	7955.1999703646	Sum of GTIs [s]
date	2012-03-25T18:32:44	Date and time of file creation	ontime5	7955.1999703646	Sum of GTIs [s]
revision	2	Processing version of data	ontime6	7955.1999703646	Sum of GTIs [s]
			ontime7	7955.1999703646	Sum of GTIs [s]
			ontime8	7955.1999703646	Sum of GTIs [s]
			ontime9	7955.1999703646	Sum of GTIs [s]
			l1events	1429848	Number of level 1 events

### 2.1.4 Events

	ccd 4	ccd 5	ccd 6	ccd 7	ccd 8	ccd 9		ccd 4	ccd 5	ccd 6	ccd 7	ccd 8	ccd 9
level 1 events	230713	235241	233939	244726	252542	232687	grade 0 events	89414	32156	90314	42688	93929	88845
rejected events	77518	64083	67831	58035	77290	72425		38%	13%	38%	17%	37%	38%
rejected %	33%	27%	28%	23%	30%	31%	grade 1 events	805	175	488	192	585	639
								0%	0%	0%	0%	0%	0%
							grade 2 events	24290	63900	29124	40960	31294	27753
								10%	27%	12%	16%	12%	11%
							grade 3 events	10398	9180	10495	18340	11777	10361
								4%	3%	4%	7%	4%	4%
							grade 4 events	10449	9189	10529	18356	11784	10582
								4%	3%	4%	7%	4%	4%
							grade 5 events	3864	9033	4041	9519	5076	4442
								1%	3%	1%	3%	2%	1%
							grade 6 events	19979	58258	27191	68039	28060	24207
								8%	24%	11%	27%	11%	10%
							grade 7 events	71514	53350	61757	46632	70037	65858
								30%	22%	26%	19%	27%	28%

## 2.2 Compared Parameters

Parameter	Planned	Actual	Parameter	Planned	Actual
Instrument	ACIS	ACIS	Obspar format version number	7	7
Detector	ACIS-456789	ACIS-456789	Obspar file type	PREDICTED	ACTUAL
Grating	NONE	NONE	Obspar update status	NONE	UPDATED
Data mode	FAINT	FAINT	On-chip summing requested	N	N
Observation mode	SECONDARY	SECONDARY	Subarray requested	NONE	NONE
[deg] Pointing RA	0	142.0267859360154	Alternating exposures requested	N	N
[deg] Pointing Dec	0	-16.99061949939195	[s] Primary exposure time	3.2	3.2
[deg] Pointing Roll	0.0	341.9283374012257			
[mm] SIM focus pos	-0.684267	-0.6828225247311905			
[mm] SIM defocus	0	0.8505141146731063			
[mm] SIM translation stage pos	-190.132523	250.466033080201			
[mm] SIM translation stage offset	0	-0.01005468664627074			
[s] Observation start time (MET)	256605202.920674	256605201.89566			
Observation start date	2006-02-17T23:13:23	2006-02-17T23:13:21			
[s] Observation end time (MET)	256616654.221207	256616653.19619			
Observation end date	2006-02-18T02:24:14	2006-02-18T02:24:13			
Read mode	TIMED	TIMED			

## **2.3 Star Slots**

## **2.4 FID Slots**

## A Summary

### A.1 Status

V&V Scientist	Beth Sundheim
V&V Date (YYYY-MM-DD)	2012.03.27
V&V Edition	1
V&V Disposition and Status	OK
V&V Charge Time	7.9551999703646

### A.2 Comments