

# V&V Reference Report

## L2 ASCDS Version : 8.4.3

Observation 59098 - L2 Version 2  
Chandra X-Ray Center

L2 Processing Date : Mar 26 2012

## Contents

<b>1</b>	<b>Front</b>	<b>2</b>
<b>2</b>	<b>OBI</b>	<b>3</b>
2.1	OBI . . . . .	3
2.1.1	Images . . . . .	3
2.1.2	Bias . . . . .	3
2.1.3	Parameters . . . . .	4
2.1.4	Events . . . . .	4
2.2	Compared Parameters . . . . .	5
2.3	Star Slots . . . . .	6
2.4	FID Slots . . . . .	6
<b>A</b>	<b>Summary</b>	<b>7</b>
A.1	Status . . . . .	7
A.2	Comments . . . . .	7

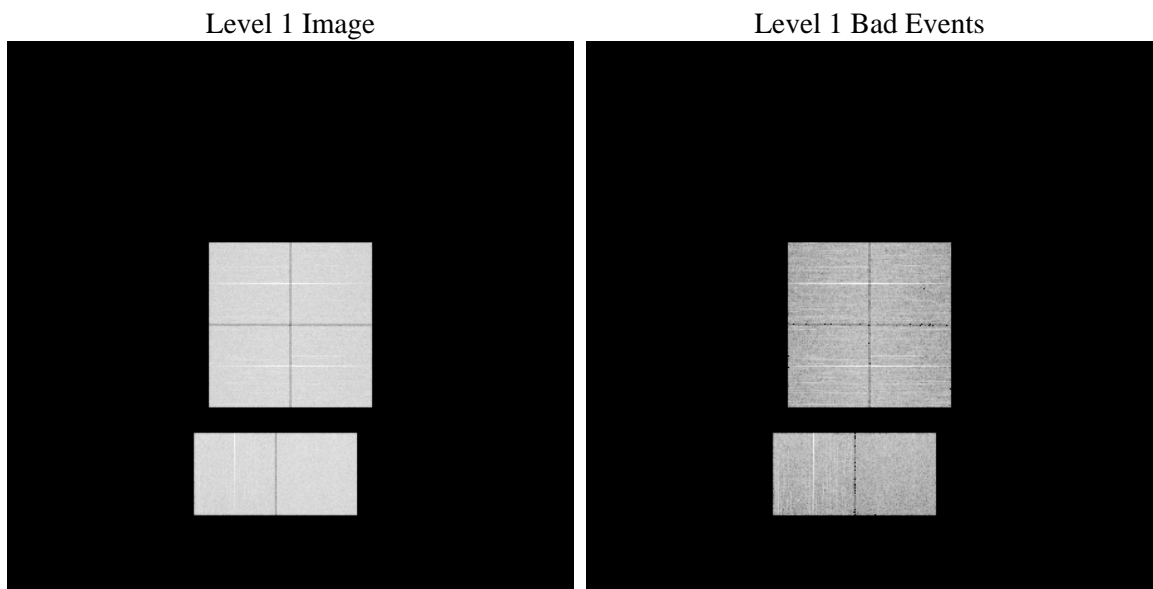
# 1 Front

seq_num	&#160	Sequence number
obs_id	59098	Observation id
title	ACIS-012367 diagnostics	Proposal title
observer	CHANDRA engineering request/realtime commanding	Principal investig
object	&#160	Source name
dtcycle	0	&#160
cycle	P	events from which exps? Prim/Second/Both
ra_targ	0.0	Observer's specified target RA [deg]
dec_targ	0.0	Observer's specified target Dec [deg]
ra_nom	160.02597921858	Nominal RA [deg]
dec_nom	-19.985120069199	Nominal Dec [deg]
roll_nom	358.45469336648	Nominal Roll [deg]
revision	2	Processing version of data
ontime	7800.935044378	Sum of GTIs [s]
livetime	7702.154907687	Livetime [s]
ontime0	7800.8940043747	Sum of GTIs [s]
ontime1	7800.8529643714	Sum of GTIs [s]
ontime2	7800.8119243681	Sum of GTIs [s]
ontime3	7800.9760843813	Sum of GTIs [s]
ontime6	7800.7708843946	Sum of GTIs [s]
ontime7	7800.935044378	Sum of GTIs [s]
l2events	928694	Number of level 2 events

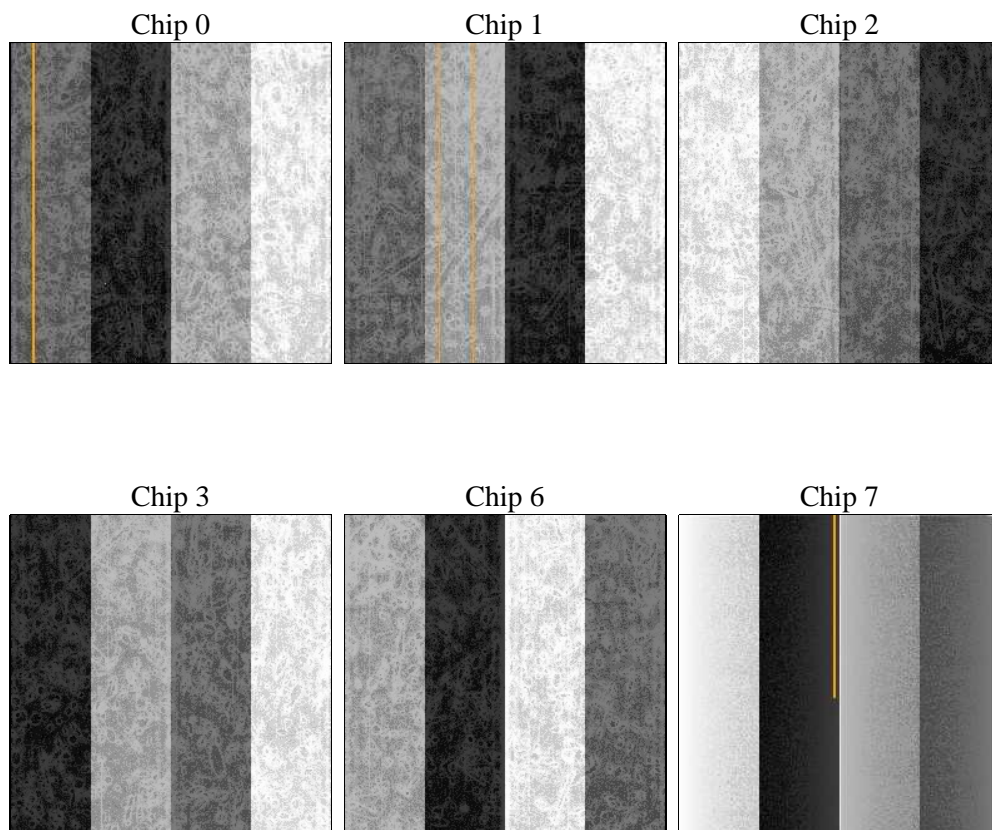
## 2 OBI

### 2.1 OBI

#### 2.1.1 Images



#### 2.1.2 Bias



### 2.1.3 Parameters

obi_num	0	Obi number	sched_exp_time	0.0	[s] Scheduled observation exposure time
ascdsver	8.4.3	Processing system revision	ontime	7800.935044378	Sum of GTIs [s]
caldsver	4.4.8	&#160	ontime0	7800.8940043747	Sum of GTIs [s]
date	2012-03-26T09:11:45	Date and time of file creation	ontime1	7800.8529643714	Sum of GTIs [s]
revision	2	Processing version of data	ontime2	7800.8119243681	Sum of GTIs [s]
			ontime3	7800.9760843813	Sum of GTIs [s]
			ontime6	7800.7708843946	Sum of GTIs [s]
			ontime7	7800.935044378	Sum of GTIs [s]
			l1events	1350322	Number of level 1 events

### 2.1.4 Events

	ccd 0	ccd 1	ccd 2	ccd 3	ccd 6	ccd 7		ccd 0	ccd 1	ccd 2	ccd 3	ccd 6	ccd 7
level 1 events	218137	216392	224118	222472	229246	239957	grade 0 events	85122	85219	87395	87568	88845	42004
rejected events	61772	59683	66741	64971	64989	54935		39%	39%	38%	39%	38%	17%
rejected %	28%	27%	29%	29%	28%	22%	grade 1 events	528	449	596	611	494	174
								0%	0%	0%	0%	0%	0%
							grade 2 events	27536	27859	26618	26949	28755	40263
								12%	12%	11%	12%	12%	16%
							grade 3 events	10232	10326	10550	10504	10307	18445
								4%	4%	4%	4%	4%	7%
							grade 4 events	10210	10155	10288	10320	10087	18020
								4%	4%	4%	4%	4%	7%
							grade 5 events	3519	3778	3416	3914	3914	9440
								1%	1%	1%	1%	1%	3%
							grade 6 events	23265	23150	22526	22160	26263	66290
								10%	10%	10%	9%	11%	27%
							grade 7 events	57725	55456	62729	60446	60581	45321
								26%	25%	27%	27%	26%	18%

## 2.2 Compared Parameters

Parameter	Planned	Actual	Parameter	Planned	Actual
Instrument	ACIS	ACIS	Obspar format version number	7	7
Detector	ACIS-012367	ACIS-012367	Obspar file type	PREDICTED	ACTUAL
Grating	NONE	NONE	Obspar update status	NONE	UPDATED
Data mode	FAINT	FAINT	On-chip summing requested	N	N
Observation mode	SECONDARY	SECONDARY	Subarray requested	NONE	NONE
[deg] Pointing RA	0	160.0259792185777	Alternating exposures requested	N	N
[deg] Pointing Dec	0	-19.98512006919933	[s] Primary exposure time	3.2	3.2
[deg] Pointing Roll	0.0	358.4546933664773			
[mm] SIM focus pos	-0.782348	-0.7809083437167272			
[mm] SIM defocus	0	0.7524282956875696			
[mm] SIM translation stage pos	-233.592463	250.466033080201			
[mm] SIM translation stage offset	0	-0.01005468664627074			
[s] Observation start time (MET)	257470854.410864	257470853.38589			
Observation start date	2006-02-27T23:40:54	2006-02-27T23:40:53			
[s] Observation end time (MET)	257485349.961537	257485348.93656			
Observation end date	2006-02-28T03:42:30	2006-02-28T03:42:28			
Read mode	TIMED	TIMED			

## **2.3 Star Slots**

## **2.4 FID Slots**

## A Summary

### A.1 Status

V&V Scientist	Jen Lauer
V&V Date (YYYY-MM-DD)	2012.03.27
V&V Edition	1
V&V Disposition and Status	OK
V&V Charge Time	7.800935044378

### A.2 Comments