

# V&V Reference Report

## L2 ASCDS Version : 8.4.3

Observation 59088 - L2 Version 2  
Chandra X-Ray Center

L2 Processing Date : Mar 27 2012

## Contents

<b>1</b>	<b>Front</b>	<b>2</b>
<b>2</b>	<b>OBI</b>	<b>3</b>
2.1	OBI . . . . .	3
2.1.1	Images . . . . .	3
2.1.2	Bias . . . . .	3
2.1.3	Parameters . . . . .	4
2.1.4	Events . . . . .	4
2.2	Compared Parameters . . . . .	5
2.3	Star Slots . . . . .	6
2.4	FID Slots . . . . .	6
<b>A</b>	<b>Summary</b>	<b>7</b>
A.1	Status . . . . .	7
A.2	Comments . . . . .	7

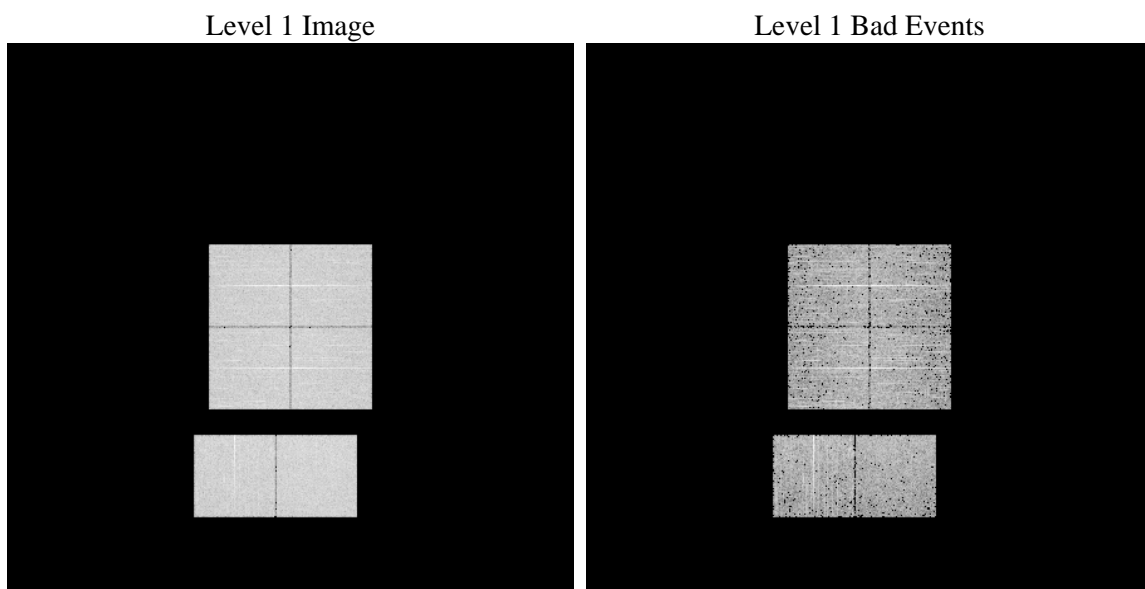
# 1 Front

seq_num	&#160	Sequence number
obs_id	59088	Observation id
title	ACIS-012367 diagnostics	Proposal title
observer	CHANDRA engineering request/realtime commanding	Principal investig
object	&#160	Source name
dtcycle	0	&#160
cycle	P	events from which exps? Prim/Second/Both
ra_targ	0.0	Observer's specified target RA [deg]
dec_targ	0.0	Observer's specified target Dec [deg]
ra_nom	186.97068258987	Nominal RA [deg]
dec_nom	25.508808025341	Nominal Dec [deg]
roll_nom	130.05859177979	Nominal Roll [deg]
revision	2	Processing version of data
ontime	2884.9935142696	Sum of GTIs [s]
livetime	2848.4619892574	Livetime [s]
ontime0	2884.9524742663	Sum of GTIs [s]
ontime1	2884.911434263	Sum of GTIs [s]
ontime2	2884.8703942597	Sum of GTIs [s]
ontime3	2885.0345542729	Sum of GTIs [s]
ontime6	2884.8293542862	Sum of GTIs [s]
ontime7	2884.9935142696	Sum of GTIs [s]
l2events	338616	Number of level 2 events

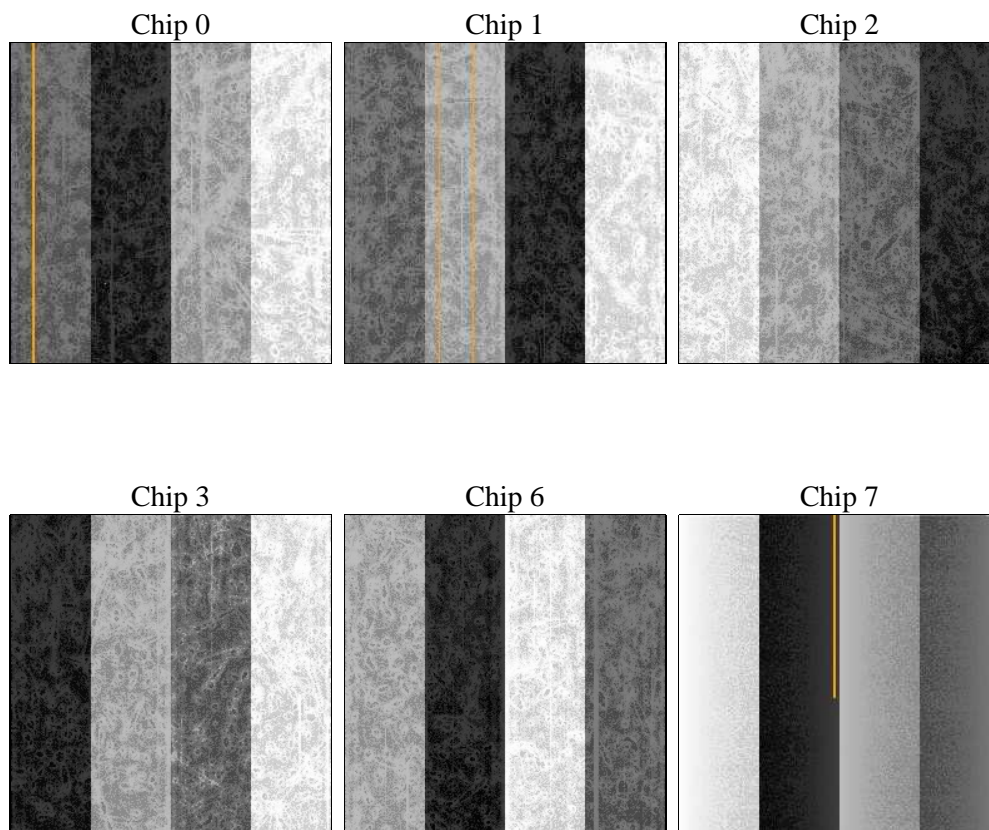
## 2 OBI

### 2.1 OBI

#### 2.1.1 Images



#### 2.1.2 Bias



### 2.1.3 Parameters

obi_num	0	Obi number	sched_exp_time	0.0	[s] Scheduled observation exposure time
ascdsver	8.4.3	Processing system revision	ontime	2884.9935142696	Sum of GTIs [s]
caldsver	4.4.8	&#160	ontime0	2884.9524742663	Sum of GTIs [s]
date	2012-03-27T05:37:08	Date and time of file creation	ontime1	2884.911434263	Sum of GTIs [s]
revision	2	Processing version of data	ontime2	2884.8703942597	Sum of GTIs [s]
			ontime3	2885.0345542729	Sum of GTIs [s]
			ontime6	2884.8293542862	Sum of GTIs [s]
			ontime7	2884.9935142696	Sum of GTIs [s]
			l1events	498424	Number of level 1 events

### 2.1.4 Events

	ccd 0	ccd 1	ccd 2	ccd 3	ccd 6	ccd 7		ccd 0	ccd 1	ccd 2	ccd 3	ccd 6	ccd 7
level 1 events	80281	79148	83177	82646	84503	88669	grade 0 events	31102	30956	31896	31999	32324	15377
rejected events	23510	21973	25830	25074	24616	20798		38%	39%	38%	38%	38%	17%
rejected %	29%	27%	31%	30%	29%	23%	grade 1 events	192	165	198	211	194	85
								0%	0%	0%	0%	0%	0%
							grade 2 events	9998	10342	9639	9862	10280	15072
								12%	13%	11%	11%	12%	16%
							grade 3 events	3665	3646	3763	3875	3694	6713
								4%	4%	4%	4%	4%	7%
							grade 4 events	3720	3682	3884	3806	3767	6571
								4%	4%	4%	4%	4%	7%
							grade 5 events	1253	1362	1249	1452	1472	3600
								1%	1%	1%	1%	1%	4%
							grade 6 events	8344	8616	8232	8095	9888	24226
								10%	10%	9%	9%	11%	27%
							grade 7 events	22007	20379	24316	23346	22884	17025
								27%	25%	29%	28%	27%	19%

## 2.2 Compared Parameters

Parameter	Planned	Actual
Instrument	ACIS	ACIS
Detector	ACIS-012367	ACIS-012367
Grating	NONE	NONE
Data mode	FAINT	FAINT
Observation mode	SECONDARY	SECONDARY
[deg] Pointing RA	0	186.9706825898701
[deg] Pointing Dec	0	25.50880802534107
[deg] Pointing Roll	0.0	130.0585917797928
[mm] SIM focus pos	-0.782348	-0.6828225247311905
[mm] SIM defocus	0	0.8505141146731063
[mm] SIM translation stage pos	-233.592463	250.466033080201
[mm] SIM translation stage offset	0	-0.01005468664627074
[s] Observation start time (MET)	257927459.132138	257927458.10712
Observation start date	2006-03-05T06:30:59	2006-03-05T06:30:58
[s] Observation end time (MET)	257932321.732364	257932320.70734
Observation end date	2006-03-05T07:52:02	2006-03-05T07:52:00
Read mode	TIMED	TIMED

Parameter	Planned	Actual
Obspar format version number	7	7
Obspar file type	PREDICTED	ACTUAL
Obspar update status	NONE	UPDATED
On-chip summing requested	N	N
Subarray requested	NONE	NONE
Alternating exposures requested	N	N
[s] Primary exposure time	3.2	3.2

## 2.3 Star Slots

## 2.4 FID Slots

## A Summary

### A.1 Status

V&V Scientist	Jen Lauer
V&V Date (YYYY-MM-DD)	2012.03.28
V&V Edition	1
V&V Disposition and Status	OK
V&V Charge Time	2.8849935142696

### A.2 Comments