

V&V Reference Report

L2 ASCDS Version : 8.4.3

Observation 59067 - L2 Version 2
Chandra X-Ray Center

L2 Processing Date : Mar 28 2012

Contents

1	Front	2
2	OBI	3
2.1	OBI	3
2.1.1	Images	3
2.1.2	Bias	3
2.1.3	Parameters	4
2.1.4	Events	4
2.2	Compared Parameters	5
2.3	Star Slots	6
2.4	FID Slots	6
A	Summary	7
A.1	Status	7
A.2	Comments	7

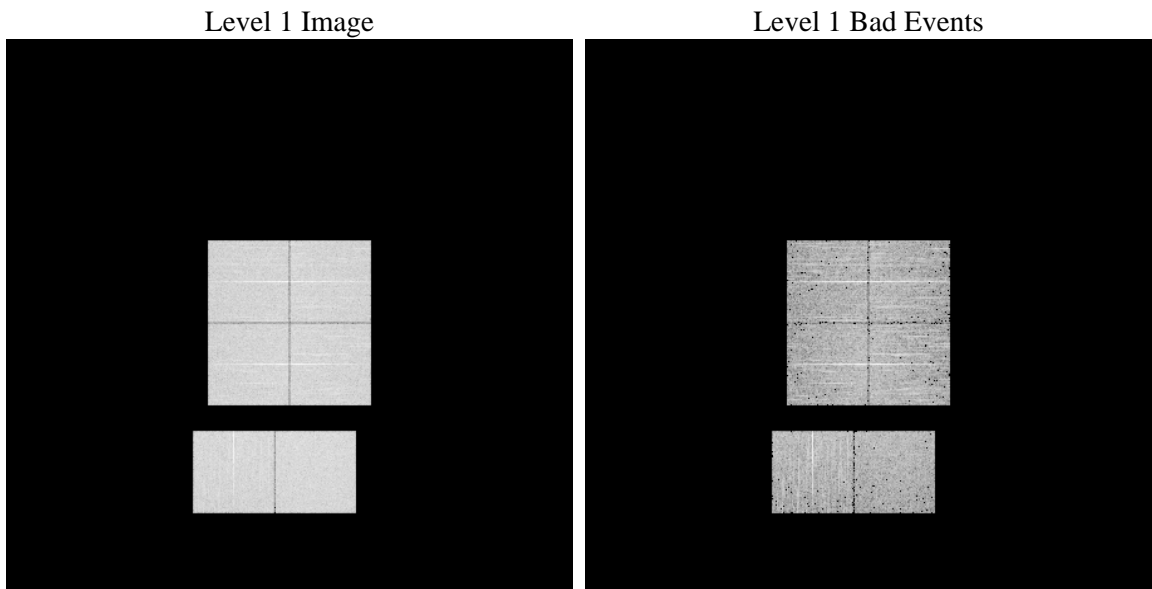
1 Front

seq_num	 	Sequence number
obs_id	59067	Observation id
title	ACIS-012367 diagnostics	Proposal title
observer	CHANDRA engineering request/realtime commanding	Principal investig
object	 	Source name
dtcycle	0	
cycle	P	events from which exps? Prim/Second/Both
ra_targ	0.0	Observer's specified target RA [deg]
dec_targ	0.0	Observer's specified target Dec [deg]
ra_nom	144.0272529488	Nominal RA [deg]
dec_nom	-13.0137242249	Nominal Dec [deg]
roll_nom	301.18850851778	Nominal Roll [deg]
revision	2	Processing version of data
ontime	4236.7999842167	Sum of GTIs [s]
livetime	4183.1510717219	Livetime [s]
ontime0	4236.7999842167	Sum of GTIs [s]
ontime1	4236.7999842167	Sum of GTIs [s]
ontime2	4236.7999842167	Sum of GTIs [s]
ontime3	4236.7999842167	Sum of GTIs [s]
ontime6	4236.7678818703	Sum of GTIs [s]
ontime7	4236.7999842167	Sum of GTIs [s]
l2events	499227	Number of level 2 events

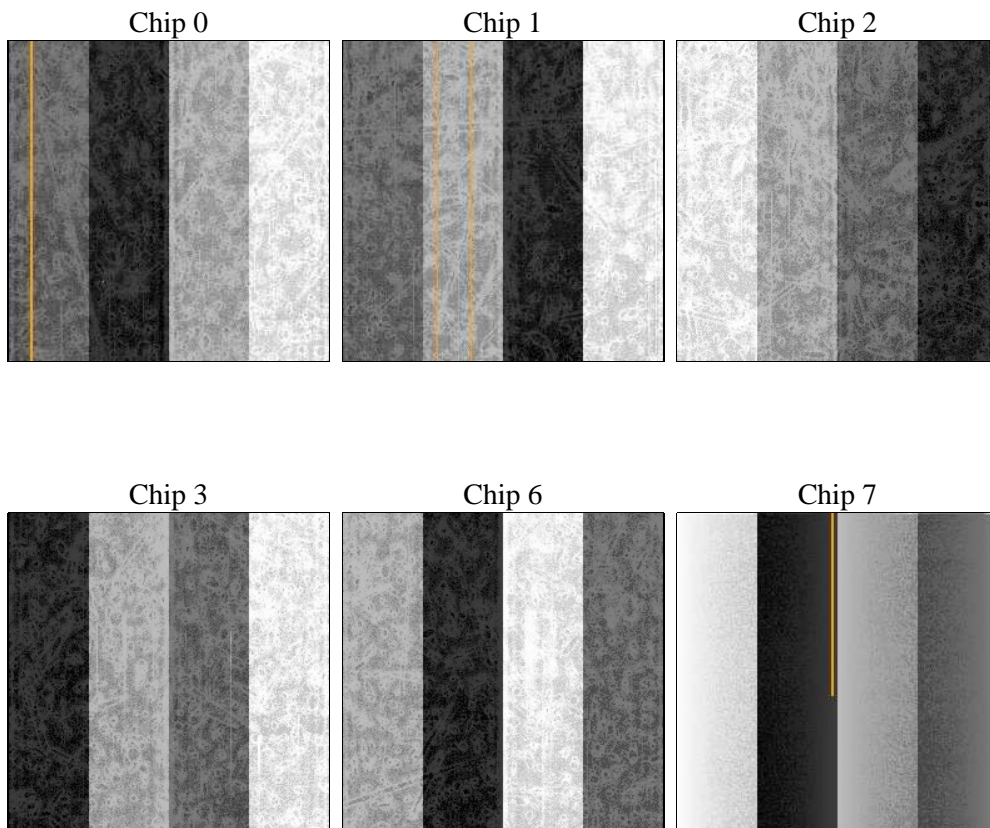
2 OBI

2.1 OBI

2.1.1 Images



2.1.2 Bias



2.1.3 Parameters

obi_num	0	Obi number	sched_exp_time	0.0	[s] Scheduled observation exposure time
ascdsver	8.4.3.1	Processing system revision	ontime	4236.7999842167	Sum of GTIs [s]
caldsver	4.4.8	 	ontime0	4236.7999842167	Sum of GTIs [s]
date	2012-03-28T03:18:25	Date and time of file creation	ontime1	4236.7999842167	Sum of GTIs [s]
revision	2	Processing version of data	ontime2	4236.7999842167	Sum of GTIs [s]
			ontime3	4236.7999842167	Sum of GTIs [s]
			ontime6	4236.7678818703	Sum of GTIs [s]
			ontime7	4236.7999842167	Sum of GTIs [s]
			l1events	727780	Number of level 1 events

2.1.4 Events

	ccd 0	ccd 1	ccd 2	ccd 3	ccd 6	ccd 7		ccd 0	ccd 1	ccd 2	ccd 3	ccd 6	ccd 7
level 1 events	115394	117368	118855	121380	124943	129840	grade 0 events	45626	45553	46776	47344	47566	22978
rejected events	31740	33502	34473	36321	36487	29695		39%	38%	39%	39%	38%	17%
rejected %	27%	28%	29%	29%	29%	22%	grade 1 events	296	279	339	321	291	101
								0%	0%	0%	0%	0%	0%
							grade 2 events	14536	15156	14375	14624	15476	21996
								12%	12%	12%	12%	12%	16%
							grade 3 events	5583	5237	5588	5603	5627	9788
								4%	4%	4%	4%	4%	7%
							grade 4 events	5493	5457	5688	5767	5614	9887
								4%	4%	4%	4%	4%	7%
							grade 5 events	1908	1986	1825	2120	2140	5143
								1%	1%	1%	1%	1%	3%
							grade 6 events	12492	12524	12004	11789	14245	35589
								10%	10%	10%	9%	11%	27%
							grade 7 events	29460	31176	32260	33812	33984	24358
								25%	26%	27%	27%	27%	18%

2.2 Compared Parameters

Parameter	Planned	Actual	Parameter	Planned	Actual
Instrument	ACIS	ACIS	Obspar format version number	7	7
Detector	ACIS-012367	ACIS-012367	Obspar file type	PREDICTED	ACTUAL
Grating	NONE	NONE	Obspar update status	NONE	UPDATED
Data mode	FAINT	FAINT	On-chip summing requested	N	N
Observation mode	SECONDARY	SECONDARY	Subarray requested	NONE	NONE
[deg] Pointing RA	0	144.0272529487981	Alternating exposures requested	N	N
[deg] Pointing Dec	0	-13.01372422490027	[s] Primary exposure time	3.2	3.2
[deg] Pointing Roll	0.0	301.1885085177776			
[mm] SIM focus pos	-0.782348	-0.6828225247311905			
[mm] SIM defocus	0	0.8505141146731063			
[mm] SIM translation stage pos	-233.592463	250.466033080201			
[mm] SIM translation stage offset	0	-0.01005468664627074			
[s] Observation start time (MET)	258383670.253329	258383669.22833			
Observation start date	2006-03-10T13:14:30	2006-03-10T13:14:29			
[s] Observation end time (MET)	258420457.505039	258420456.48004			
Observation end date	2006-03-10T23:27:38	2006-03-10T23:27:36			
Read mode	TIMED	TIMED			

2.3 Star Slots

2.4 FID Slots

A Summary

A.1 Status

V&V Scientist	Jen Lauer
V&V Date (YYYY-MM-DD)	2012.03.28
V&V Edition	1
V&V Disposition and Status	OK
V&V Charge Time	4.2367999842167

A.2 Comments