

# V&V Reference Report

## L2 ASCDS Version : 8.4.3

Observation 59038 - L2 Version 2  
Chandra X-Ray Center

L2 Processing Date : Mar 29 2012

## Contents

<b>1</b>	<b>Front</b>	<b>2</b>
<b>2</b>	<b>OBI</b>	<b>3</b>
2.1	OBI . . . . .	3
2.1.1	Images . . . . .	3
2.1.2	Bias . . . . .	3
2.1.3	Parameters . . . . .	4
2.1.4	Events . . . . .	4
2.2	Compared Parameters . . . . .	5
2.3	Star Slots . . . . .	6
2.4	FID Slots . . . . .	6
<b>A</b>	<b>Summary</b>	<b>7</b>
A.1	Status . . . . .	7
A.2	Comments . . . . .	7

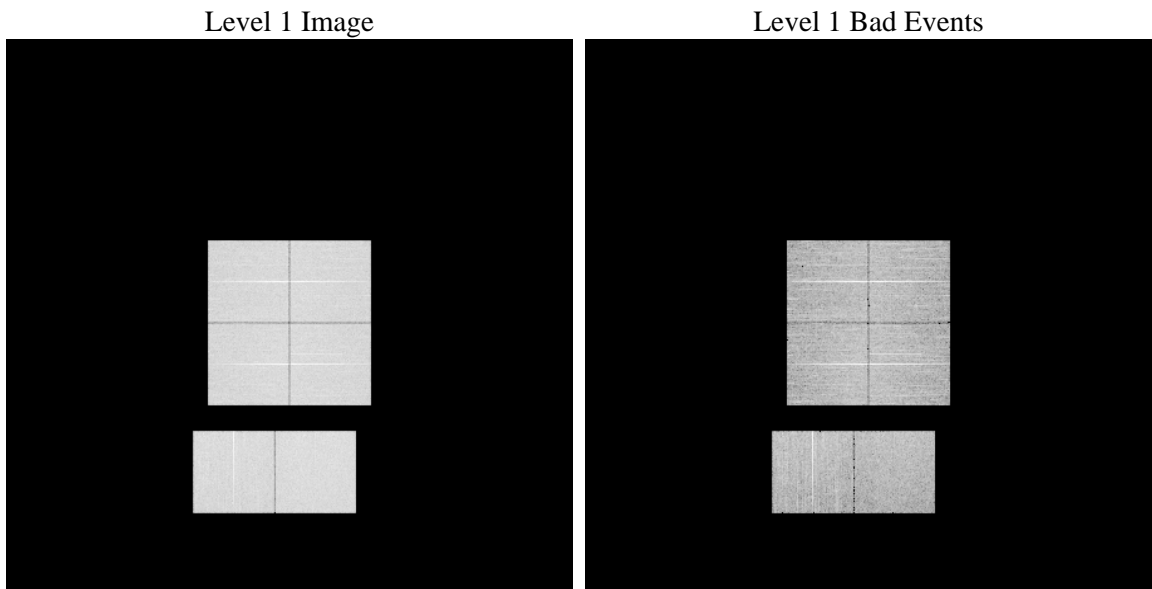
# 1 Front

seq_num	&#160	Sequence number
obs_id	59038	Observation id
title	ACIS-012367 diagnostics	Proposal title
observer	CHANDRA engineering request/realtime commanding	Principal investig
object	&#160	Source name
dtcycle	0	&#160
cycle	P	events from which exps? Prim/Second/Both
ra_targ	0.0	Observer's specified target RA [deg]
dec_targ	0.0	Observer's specified target Dec [deg]
ra_nom	207.97266393738	Nominal RA [deg]
dec_nom	18.004396877829	Nominal Dec [deg]
roll_nom	139.62397025645	Nominal Roll [deg]
revision	2	Processing version of data
ontime	7795.1999709606	Sum of GTIs [s]
livetime	7696.4924552224	Livetime [s]
ontime0	7795.1999709606	Sum of GTIs [s]
ontime1	7795.1999709606	Sum of GTIs [s]
ontime2	7795.1999709606	Sum of GTIs [s]
ontime3	7795.1999709606	Sum of GTIs [s]
ontime6	7795.1999709606	Sum of GTIs [s]
ontime7	7795.1999709606	Sum of GTIs [s]
l2events	933214	Number of level 2 events

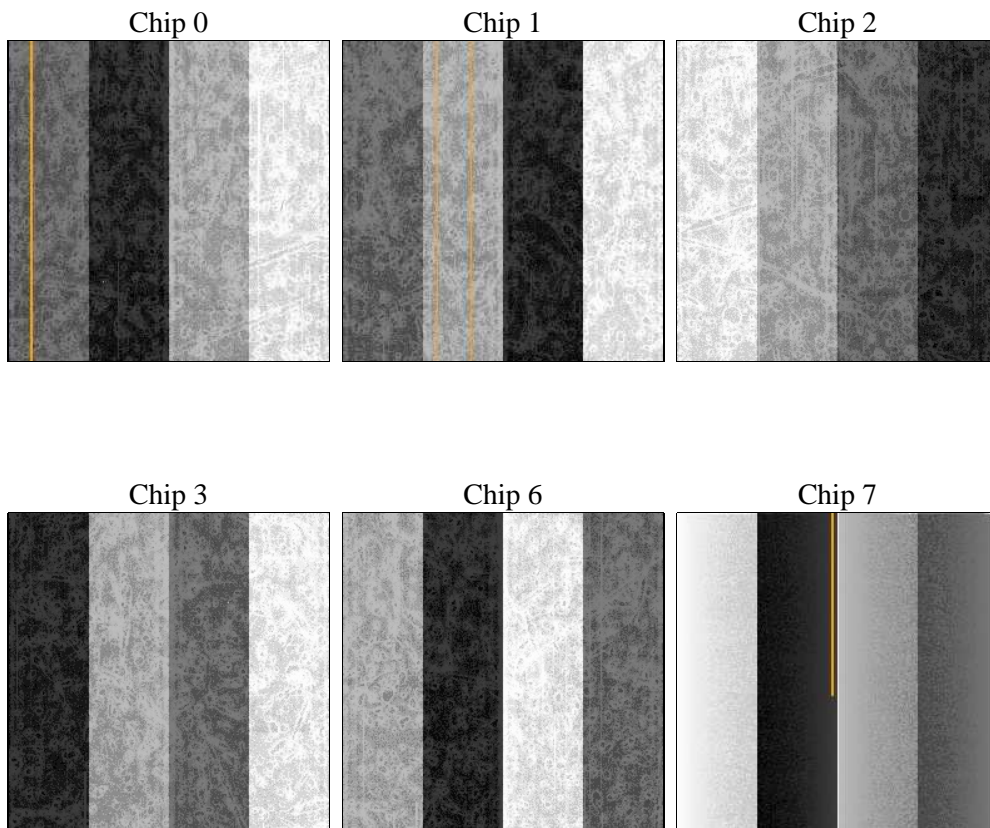
## 2 OBI

### 2.1 OBI

#### 2.1.1 Images



#### 2.1.2 Bias



### 2.1.3 Parameters

obi_num	1	Obi number	sched_exp_time	0.0	[s] Scheduled observation exposure time
ascdsver	8.4.3.1	Processing system revision	ontime	7795.1999709606	Sum of GTIs [s]
caldsver	4.4.8	&#160	ontime0	7795.1999709606	Sum of GTIs [s]
date	2012-03-29T12:19:27	Date and time of file creation	ontime1	7795.1999709606	Sum of GTIs [s]
revision	2	Processing version of data	ontime2	7795.1999709606	Sum of GTIs [s]
			ontime3	7795.1999709606	Sum of GTIs [s]
			ontime6	7795.1999709606	Sum of GTIs [s]
			ontime7	7795.1999709606	Sum of GTIs [s]
			l1events	1371776	Number of level 1 events

### 2.1.4 Events

	ccd 0	ccd 1	ccd 2	ccd 3	ccd 6	ccd 7		ccd 0	ccd 1	ccd 2	ccd 3	ccd 6	ccd 7
level 1 events	220218	222138	225277	227023	232494	244626	grade 0 events	84738	84739	87866	88550	88217	42517
rejected events	64236	64228	67662	67424	67771	57459		38%	38%	39%	39%	37%	17%
rejected %	29%	28%	30%	29%	29%	23%	grade 1 events	589	487	676	628	489	157
								0%	0%	0%	0%	0%	0%
							grade 2 events	27594	28475	26593	27141	28685	40948
								12%	12%	11%	11%	12%	16%
							grade 3 events	10357	10255	10340	10786	10550	18500
								4%	4%	4%	4%	4%	7%
							grade 4 events	10084	10271	10358	10508	10169	18032
								4%	4%	4%	4%	4%	7%
							grade 5 events	3623	3830	3367	4073	4116	9741
								1%	1%	1%	1%	1%	3%
							grade 6 events	23266	24239	22531	22671	27190	67248
								10%	10%	10%	9%	11%	27%
							grade 7 events	59967	59842	63546	62666	63078	47483
								27%	26%	28%	27%	27%	19%

## 2.2 Compared Parameters

Parameter	Planned	Actual	Parameter	Planned	Actual
Instrument	ACIS	ACIS	Obspar format version number	7	7
Detector	ACIS-012367	ACIS-012367	Obspar file type	PREDICTED	ACTUAL
Grating	NONE	NONE	Obspar update status	NONE	UPDATED
Data mode	FAINT	FAINT	On-chip summing requested	N	N
Observation mode	SECONDARY	SECONDARY	Subarray requested	NONE	NONE
[deg] Pointing RA	0	207.9726639373845	Alternating exposures requested	N	N
[deg] Pointing Dec	0	18.00439687782944	[s] Primary exposure time	3.2	3.2
[deg] Pointing Roll	0.0	139.6239702564538			
[mm] SIM focus pos	-0.782348	-0.6828225247311905			
[mm] SIM defocus	0	0.8505141146731063			
[mm] SIM translation stage pos	-233.592463	250.466033080201			
[mm] SIM translation stage offset	0	-0.01005468664627074			
[s] Observation start time (MET)	260210218.288335	260210217.26331			
Observation start date	2006-03-31T16:36:58	2006-03-31T16:36:57			
[s] Observation end time (MET)	260251976.79027	260251975.76526			
Observation end date	2006-04-01T04:12:57	2006-04-01T04:12:55			
Read mode	TIMED	TIMED			

## **2.3 Star Slots**

## **2.4 FID Slots**

## **A Summary**

### **A.1 Status**

V&V Scientist	Jen Lauer
V&V Date (YYYY-MM-DD)	2012.03.30
V&V Edition	1
V&V Disposition and Status	OK
V&V Charge Time	7.7951999709606

### **A.2 Comments**