

# V&V Reference Report

## L2 ASCDS Version : 8.4.3

Observation 59032 - L2 Version 2  
Chandra X-Ray Center

L2 Processing Date : Mar 29 2012

## Contents

<b>1</b>	<b>Front</b>	<b>2</b>
<b>2</b>	<b>OBI</b>	<b>3</b>
2.1	OBI . . . . .	3
2.1.1	Images . . . . .	3
2.1.2	Bias . . . . .	3
2.1.3	Parameters . . . . .	4
2.1.4	Events . . . . .	4
2.2	Compared Parameters . . . . .	5
2.3	Star Slots . . . . .	6
2.4	FID Slots . . . . .	6
<b>A</b>	<b>Summary</b>	<b>7</b>
A.1	Status . . . . .	7
A.2	Comments . . . . .	7

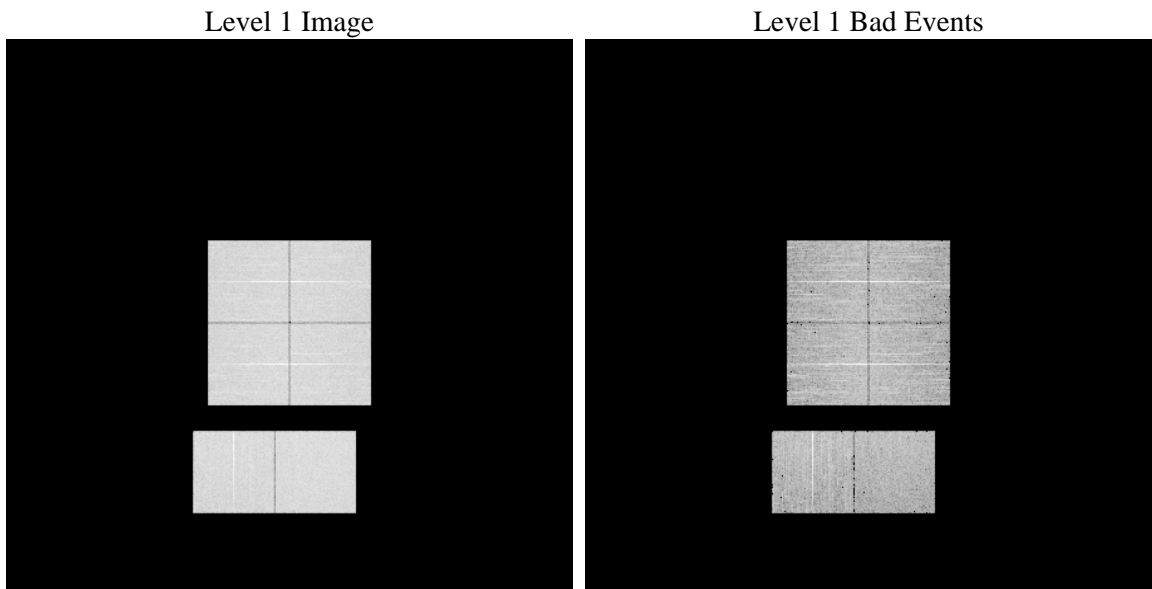
# 1 Front

seq_num	&#160	Sequence number
obs_id	59032	Observation id
title	ACIS-012367 diagnostics	Proposal title
observer	CHANDRA engineering request/realtime commanding	Principal investig
object	&#160	Source name
dtcycle	0	&#160
cycle	P	events from which exps? Prim/Second/Both
ra_targ	0.0	Observer's specified target RA [deg]
dec_targ	0.0	Observer's specified target Dec [deg]
ra_nom	208.96767382208	Nominal RA [deg]
dec_nom	20.998514809957	Nominal Dec [deg]
roll_nom	151.37046668885	Nominal Roll [deg]
revision	2	Processing version of data
ontime	6245.7978033125	Sum of GTIs [s]
livetime	6166.7097507591	Livetime [s]
ontime0	6245.7567633092	Sum of GTIs [s]
ontime1	6242.4747130871	Sum of GTIs [s]
ontime2	6245.6746833026	Sum of GTIs [s]
ontime3	6245.8388433158	Sum of GTIs [s]
ontime6	6245.6336433291	Sum of GTIs [s]
ontime7	6245.7978033125	Sum of GTIs [s]
l2events	729514	Number of level 2 events

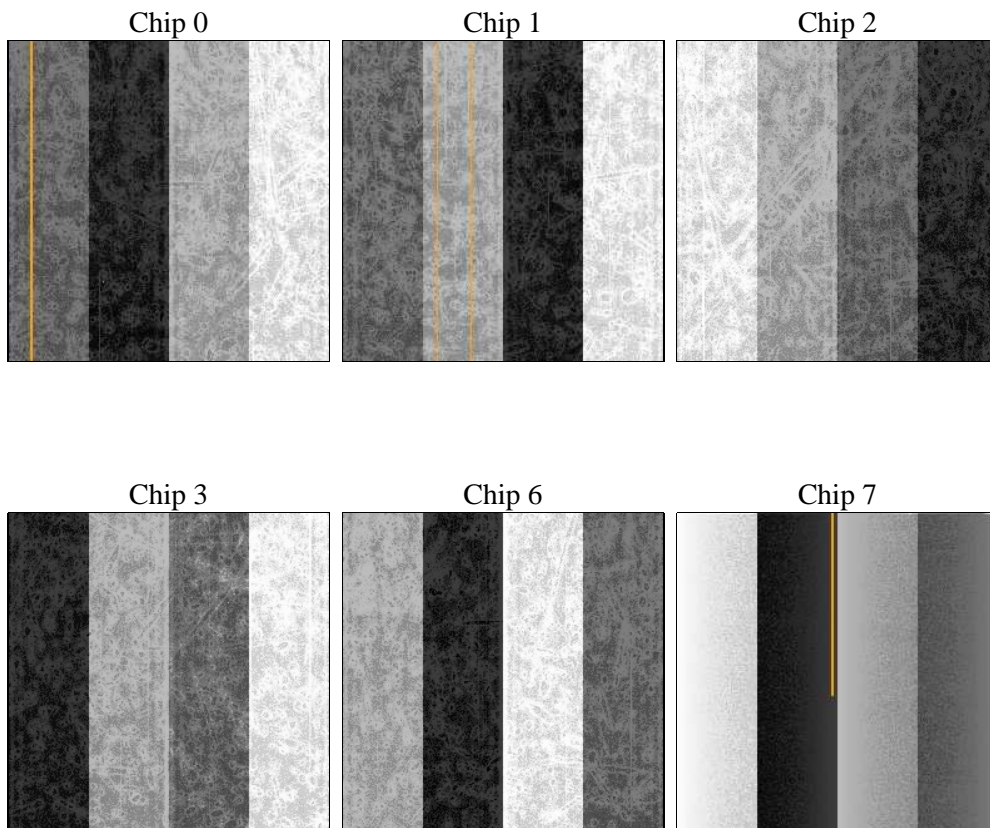
## 2 OBI

### 2.1 OBI

#### 2.1.1 Images



#### 2.1.2 Bias



### 2.1.3 Parameters

obi_num	0	Obi number	sched_exp_time	0.0	[s] Scheduled observation exposure time
ascdsver	8.4.3	Processing system revision	ontime	6245.7978033125	Sum of GTIs [s]
caldsver	4.4.8	&#160	ontime0	6245.7567633092	Sum of GTIs [s]
date	2012-03-29T14:19:06	Date and time of file creation	ontime1	6242.4747130871	Sum of GTIs [s]
revision	2	Processing version of data	ontime2	6245.6746833026	Sum of GTIs [s]
			ontime3	6245.8388433158	Sum of GTIs [s]
			ontime6	6245.6336433291	Sum of GTIs [s]
			ontime7	6245.7978033125	Sum of GTIs [s]
			l1events	1071963	Number of level 1 events

### 2.1.4 Events

	ccd 0	ccd 1	ccd 2	ccd 3	ccd 6	ccd 7		ccd 0	ccd 1	ccd 2	ccd 3	ccd 6	ccd 7
level 1 events	172879	171535	178209	175926	182500	190914	grade 0 events	66728	66571	68370	69086	69225	33041
rejected events	50352	48661	55005	52109	53493	44537		38%	38%	38%	39%	37%	17%
rejected %	29%	28%	30%	29%	29%	23%	grade 1 events	427	381	492	469	392	141
								0%	0%	0%	0%	0%	0%
							grade 2 events	21435	22138	20900	21046	22505	31724
								12%	12%	11%	11%	12%	16%
							grade 3 events	8208	7960	7929	8122	8025	14405
								4%	4%	4%	4%	4%	7%
							grade 4 events	7922	7870	8170	8182	8214	14362
								4%	4%	4%	4%	4%	7%
							grade 5 events	2927	2994	2642	3118	3179	7636
								1%	1%	1%	1%	1%	3%
							grade 6 events	18296	18392	17886	17441	21093	52921
								10%	10%	10%	9%	11%	27%
							grade 7 events	46936	45229	51820	48462	49867	36684
								27%	26%	29%	27%	27%	19%

## 2.2 Compared Parameters

Parameter	Planned	Actual	Parameter	Planned	Actual
Instrument	ACIS	ACIS	Obspar format version number	7	7
Detector	ACIS-012367	ACIS-012367	Obspar file type	PREDICTED	ACTUAL
Grating	NONE	NONE	Obspar update status	NONE	UPDATED
Data mode	FAINT	FAINT	On-chip summing requested	N	N
Observation mode	SECONDARY	SECONDARY	Subarray requested	NONE	NONE
[deg] Pointing RA	0	208.9676738220809	Alternating exposures requested	N	N
[deg] Pointing Dec	0	20.99851480995717	[s] Primary exposure time	3.2	3.2
[deg] Pointing Roll	0.0	151.3704666888523			
[mm] SIM focus pos	-0.782348	-0.6828225247311905			
[mm] SIM defocus	0	0.8505141146731063			
[mm] SIM translation stage pos	-233.592463	250.466033080201			
[mm] SIM translation stage offset	0	-0.01005468664627074			
[s] Observation start time (MET)	260667616.359601	260667615.33461			
Observation start date	2006-04-05T23:40:16	2006-04-05T23:40:15			
[s] Observation end time (MET)	260683044.660318	260683043.63533			
Observation end date	2006-04-06T03:57:25	2006-04-06T03:57:23			
Read mode	TIMED	TIMED			

## 2.3 Star Slots

## 2.4 FID Slots

## A Summary

### A.1 Status

V&V Scientist	Jen Lauer
V&V Date (YYYY-MM-DD)	2012.03.30
V&V Edition	1
V&V Disposition and Status	OK
V&V Charge Time	6.2457978033125

### A.2 Comments