

V&V Reference Report

L2 ASCDS Version : 8.4.3.1

Observation 59019 - L2 Version 2
Chandra X-Ray Center

L2 Processing Date : Mar 30 2012

Contents

1	Front	2
2	OBI	3
2.1	OBI	3
2.1.1	Images	3
2.1.2	Bias	3
2.1.3	Parameters	4
2.1.4	Events	4
2.2	Compared Parameters	5
2.3	Star Slots	6
2.4	FID Slots	6
A	Summary	7
A.1	Status	7
A.2	Comments	7

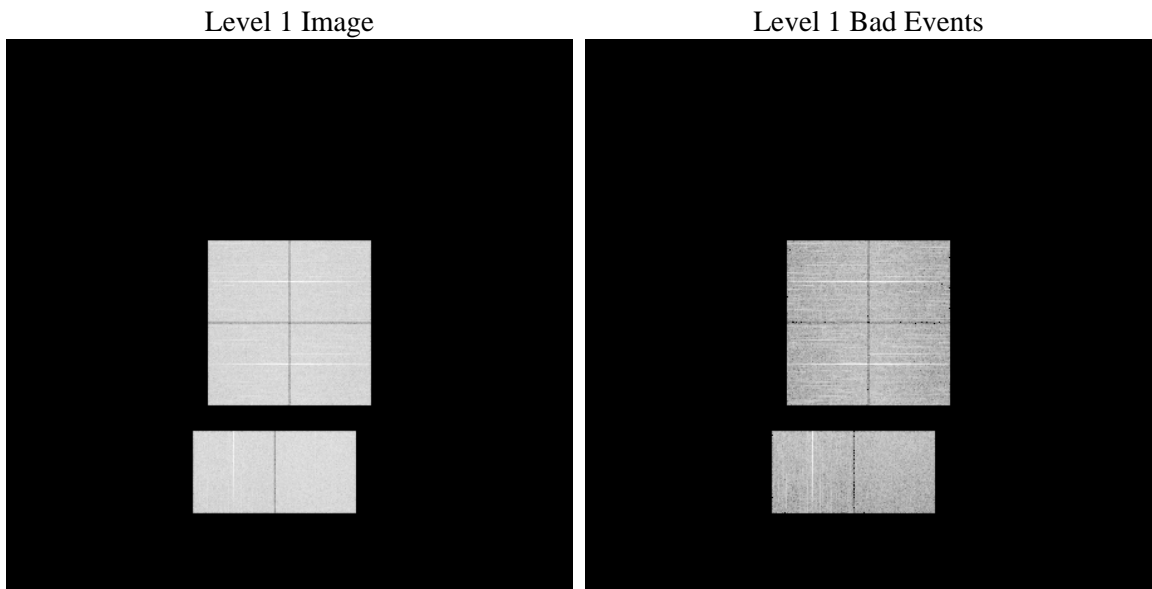
1 Front

seq_num	 	Sequence number
obs_id	59019	Observation id
title	ACIS-012367 diagnostics	Proposal title
observer	CHANDRA engineering request/realtime commanding	Principal investig
object	 	Source name
dtcycle	0	
cycle	P	events from which exps? Prim/Second/Both
ra_targ	0.0	Observer's specified target RA [deg]
dec_targ	0.0	Observer's specified target Dec [deg]
ra_nom	178.02916016928	Nominal RA [deg]
dec_nom	-26.010388661941	Nominal Dec [deg]
roll_nom	301.24844186194	Nominal Roll [deg]
revision	2	Processing version of data
ontime	7436.7999722958	Sum of GTIs [s]
livetime	7342.6307331432	Livetime [s]
ontime0	7436.7999722958	Sum of GTIs [s]
ontime1	7436.7999722958	Sum of GTIs [s]
ontime2	7436.7999722958	Sum of GTIs [s]
ontime3	7436.7999722958	Sum of GTIs [s]
ontime6	7436.7999722958	Sum of GTIs [s]
ontime7	7436.7999722958	Sum of GTIs [s]
l2events	845227	Number of level 2 events

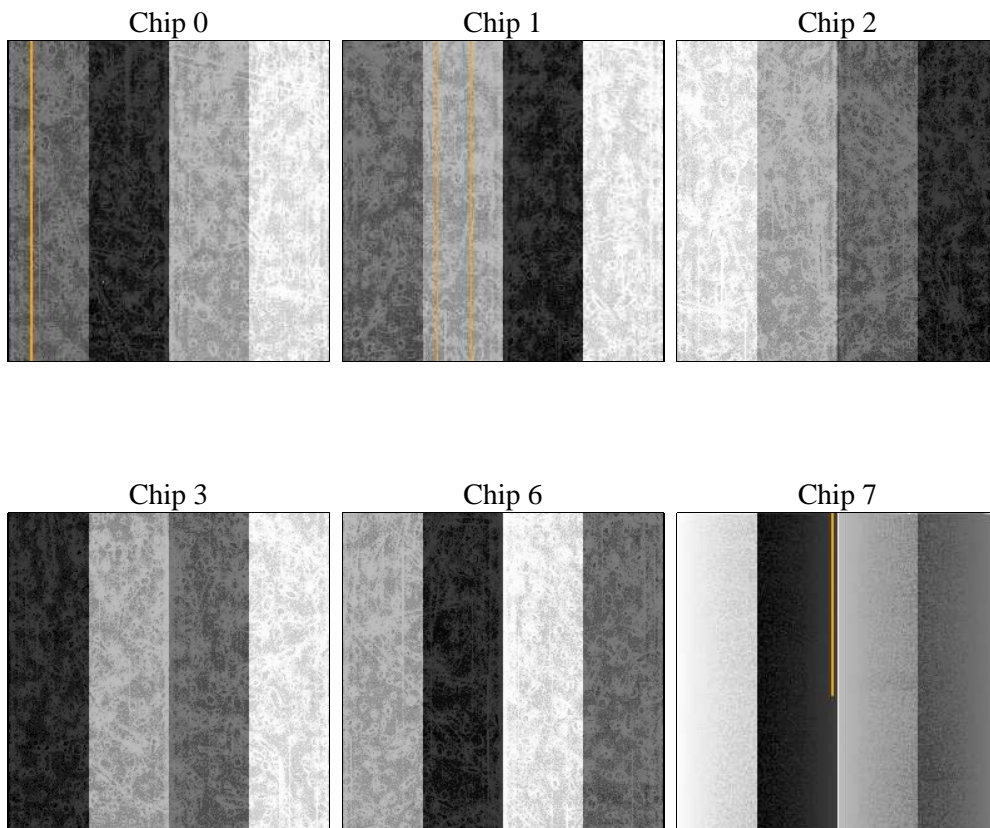
2 OBI

2.1 OBI

2.1.1 Images



2.1.2 Bias



2.1.3 Parameters

obi_num	0	Obi number	sched_exp_time	0.0	[s] Scheduled observation exposure time
ascdsver	8.4.3	Processing system revision	ontime	7436.7999722958	Sum of GTIs [s]
caldsver	4.4.8	 	ontime0	7436.7999722958	Sum of GTIs [s]
date	2012-03-30T06:19:41	Date and time of file creation	ontime1	7436.7999722958	Sum of GTIs [s]
revision	2	Processing version of data	ontime2	7436.7999722958	Sum of GTIs [s]
			ontime3	7436.7999722958	Sum of GTIs [s]
			ontime6	7436.7999722958	Sum of GTIs [s]
			ontime7	7436.7999722958	Sum of GTIs [s]
			l1events	1254949	Number of level 1 events

2.1.4 Events

	ccd 0	ccd 1	ccd 2	ccd 3	ccd 6	ccd 7		ccd 0	ccd 1	ccd 2	ccd 3	ccd 6	ccd 7
level 1 events	202974	203612	206351	208214	210481	223317	grade 0 events	78690	78367	80746	81518	81309	38010
rejected events	60800	60357	63552	64023	61703	54698		38%	38%	39%	39%	38%	17%
rejected %	29%	29%	30%	30%	29%	24%	grade 1 events	516	400	556	589	443	150
								0%	0%	0%	0%	0%	0%
							grade 2 events	24896	26117	24335	24537	26112	37244
								12%	12%	11%	11%	12%	16%
							grade 3 events	9367	9177	9452	9739	9449	16615
								4%	4%	4%	4%	4%	7%
							grade 4 events	9422	9326	9515	9715	9391	16505
								4%	4%	4%	4%	4%	7%
							grade 5 events	3366	3536	3164	3616	3648	8937
								1%	1%	1%	1%	1%	4%
							grade 6 events	21354	21721	20224	20281	24107	62025
								10%	10%	9%	9%	11%	27%
							grade 7 events	55363	54968	58359	58219	56022	43831
								27%	26%	28%	27%	26%	19%

2.2 Compared Parameters

Parameter	Planned	Actual	Parameter	Planned	Actual
Instrument	ACIS	ACIS	Obspar format version number	7	7
Detector	ACIS-012367	ACIS-012367	Obspar file type	PREDICTED	ACTUAL
Grating	NONE	NONE	Obspar update status	NONE	UPDATED
Data mode	FAINT	FAINT	On-chip summing requested	N	N
Observation mode	SECONDARY	SECONDARY	Subarray requested	NONE	NONE
[deg] Pointing RA	0	178.0291601692751	Alternating exposures requested	N	N
[deg] Pointing Dec	0	-26.0103886619412	[s] Primary exposure time	3.2	3.2
[deg] Pointing Roll	0.0	301.2484418619355			
[mm] SIM focus pos	-0.782348	-0.6828225247311905			
[mm] SIM defocus	0	0.8505141146731063			
[mm] SIM translation stage pos	-233.592463	250.466033080201			
[mm] SIM translation stage offset	0	-0.01005468664627074			
[s] Observation start time (MET)	261394677.593486	261394676.56848			
Observation start date	2006-04-14T09:37:58	2006-04-14T09:37:56			
[s] Observation end time (MET)	261416963.144525	261416962.11952			
Observation end date	2006-04-14T15:49:23	2006-04-14T15:49:22			
Read mode	TIMED	TIMED			

2.3 Star Slots

2.4 FID Slots

A Summary

A.1 Status

V&V Scientist	Jen Lauer
V&V Date (YYYY-MM-DD)	2012.03.30
V&V Edition	1
V&V Disposition and Status	OK
V&V Charge Time	7.4367999722958

A.2 Comments